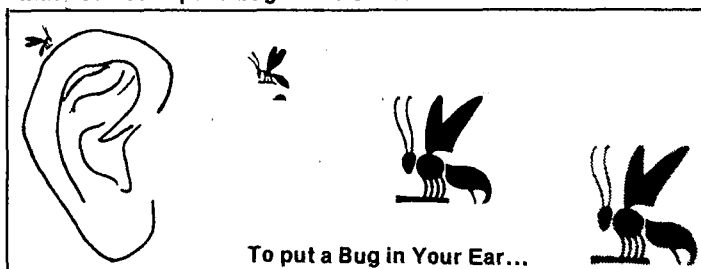


NO. 50

International Bi-Monthly Newsletter • Single Copy \$1.50 • Yearly \$9.00 • Canada \$10.00 • Overseas by Air \$13.00



HEALING, PSYCHIC DENISTRY

Until my recent trip to Brazil, I had only seen films of so-called psychic healings, psychic surgery in the Philippines; laying on of hands in churches and the remarkable charismatic demonstrations of the late Katherine Kulman and others on television. But now my sense of reality has been largely altered.

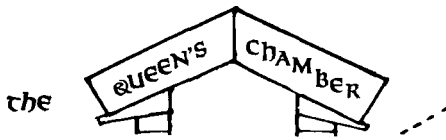
After witnessing miraculous healings onsite, where I was allowed to observe and feel tumors which apparently shrank to the level of full remission within a few minutes; where the blind were made to see; where transmutations of incredible quality and result were produced; where psychic heart transplants, proven before and after by x-rays literally transformed patients who before treatment, were reportedly in a terminal condition and back to health before my eyes, I now see time as being responsible for our idea of ageing and the enemy of immediate healing. If one can warp (alter) the flow of time, instantaneity can result. I've asked myself over and over since returning home: "Why can't the cause which originally brought on the physical problem be immediately reversed to produce spontaneous healing? If so, if a certain way has been found which annihilates time as we know it, a method that can intervene and overturn the usual slow healing processes, let us learn it and master the technique. What I saw and experienced in Brazil, has nothing to do with sleight-of-hand, snake-oil or quackery.

But how? One should ask...to whom can we turn for this information. Can we be taught how? In many countries however, it's illegal for unlicensed persons to bring about a healing in this manner, even if one had the knowledge or gift. So, what must one do? Forget about it, because this form of healing is generally forbidden. On the other hand, one with even an ounce of compassion and empathy for suffering humanity, finds it difficult to idly stand by; particularly if one might have the gift, or the potential to accelerate healing in a dying patient. One might hide behind the credentials of a spiritual healing ministry for awhile, but sooner or later, pressure will be brought to bear by authorities who enforce laws forbidding unorthodox healing methods, so even the healing ministry must ever be on guard against the threat of intimidation, arrest and harassment. If Jesus came to town today, performing healings as described in the Bible, he could be arrested for doctoring without a license.

In Brazil, astonishing healings are performed in the country by Odilon Ferreira, a Belo Horizonte Judge, who makes no charge for his services which are obviously performed under Divine guidance. Being with Odilon, had to be one of the most dramatic experiences of my life, observing this incredible human being at work, causing the limbs of an adult — paralyzed since birth — to begin moving freely again; to restore hearing, natural heart rhythms, vision, damaged bone and tissue while the patient, without benefit of anesthetic waited then walked away dramatically transformed.

Now, on the face of it, I don't expect anyone to believe what I've written here just because I've said it is so, but rather to be open to the possibility that there are healing forces in space that can be summoned, forces that defy accepted scientific opinion, and forces that can spontaneously intervene in life and death situations.

I have a personal friend in Los Angeles, California, who had eleven cavities suddenly filled in his mouth, merely by being present in a church when, psychic dentist, Brother Willard Fuller was present. I mentioned this episode and others where Fuller was able to bring about sudden corrections in the dental work of persons without benefit of dentistry as it is practiced today. Two Monterey Bay area dentists looked at me as though I was completely mad, backing away in disbelief... **Bill Cox**



SPIRITUAL EXERCISES...suggested by Charles H. Hapgood and Elwood Babbitt, developed over the last 14 years.

The Bread of Spiritual Experience (Spiritual Exercises) will appear in the 'Guide from time to time. These interesting Wisdoms were developed by Charles H. Hapgood in daily use during the period 1966-1977, when Hapgood was working in association with the well-known medium, Elwood Babbitt. Hapgood is the author of the book "VOICES OF SPIRIT" Through the Psychic Experience of Elwood Babbitt, Delacorte Press @ \$8.95. A second book about Babbitt's quite amazing output, and written by Hapgood will soon be available. Here is a sample of the Spiritual Exercises to appear:

When eating a particularly delicious piece of fruit concentrate on its spiritual meaning and you will have connection with the God-Force.

To be compassionate is to see all of a person's faults, yet love him and sympathize with him in his self-caused difficulties in life.

Only the beauty of nature is real; physical substance is illusion, but its beauty is a thought wave that reaches us from the mind of God.

Know that love is a gift of spiritual energy, by which you may give another a glimpse of heaven.

In reincarnating for a new lifetime in the body it is sometimes necessary for the intellectual faculty to be blunted, or capped, to permit the growth of spiritual awareness; therefore do not dismiss the feeble-minded or the insane, for they are on their spiritual path, too.

When you have material means beyond the true needs of life, you don't have money: it has you.

If you look on the negative side you will find it, and not only that: it will find you.

Never serve the selfishness of another.

When you gaze at the great trees you may be infused with their strength; let it pour into you.

Pick out a tree, lean against it, feel its life force, meld your identity with it, talk to it, have it for a friend to talk to again and again. It will know you and not forget you.



ODILON FERREIRA... Miracle healer of Belo Horizonte, Brazil (third from left), pauses for a brief rest during an astonishing healing session in the Brazilian back country last April. (See Fourth Dimension Reachout article, this page).

PYRAMID GUIDE

An international bi-monthly newsletter, issued each year: Jan-Feb; Mar-Apr; May-June; July-Aug; Sep-Oct; Nov-Dec. Published by Life Understanding Foundation, a religious, non-profit organization. P.O.Box 30305 (741 Rosarita Lane) Santa Barbara, Calif. 93105. Phn (805)682-5151. Bill Cox, Editor. Annual Subscription \$9.00 U.S., \$10.00 Canada, All other foreign, (for prompt service) by airmail only, \$13.00.

Opinions expressed by contributing writers do not necessarily reflect those of the Pyramid Guide, Life understanding Foundation, its editor or editorial staff.

Copyright © 1980 by Life Understanding Foundation. Printed in the United States of America. All right reserved. No part of this newsletter may be used or reproduced without expressed, written permission of Life Understanding Foundation.

A coalition of over 300 organizations has been launched to stop the Draize rabbit blinding tests. The Draize Eye Test, named after its principal developer, is the routine use of the eyes of conscious rabbits to test every substance which may be hazardous to human eyes, from cosmetics to lye.

Rabbits are used because their eyes are more sensitive than the human eye, and they have no tear ducts which would cause tears to wash the substance from the eye. The animals are frequently immobilized in stocks. The chemical is poured in one eye of each rabbit by pulling the lower lid away from the eyeball to form a cup. The eyes are examined for injury at one, 24, 48 and 72 hours. The current, revised guide also suggests grading at 7, 14 and 21 days. The increasingly severe reactions observed are: "Ulceration of the cornea; opacity of the cornea; inflammation of the iris; hemorrhage; gross destruction."

The Draize test is grotesque, crude, painful and basically unchanged during the past 36 years — a period of incredible scientific advances — and the test has been demonstrated to be dramatically unreliable. The potential for developing a better, non-violent test is available which can put an end to the Draize nightmare.

This type of permissive torture mirrors the indifference of a sick, degenerating society which can associate beauty with violence and cruelty. Can one callously blind rabbits to save an extra dollar, consider rabbits to be mere things, cheap lab tools at \$20 apiece, whose cries and anguish count for nothing. All of this is an affront to modern women who revere all life, who seek to promote a just and nurturing and nonviolent society. One cannot beautify by hurting others. Beauty and love are inconsistent with cruelty.

None of 2,692 rabbits at the research center are given any pain relief during these shameful experiments in which helpless rabbits are enduring terrible sufferings even as you read these words. The rabbit may squeal, jump and try to escape. The ultimate injury to animals whose eyes have been seared with corrosive chemicals is death. Write to Coalition, 507 Fifth Avenue New York, NY 10024.



PHOTO ENERGY PHENOMENA... Image of Jurlyn and Mary of Las Vegas, Nevada, is interrupted by a diagonal baseball-bat like, shaft of light that appears to be entering their space from the left. Professional photographers label this type of phenomena as solar interference, light distortion, lense flares and so on, but in South America, and regions beyond, certain scholars of the unknown will tell you that often when pictures are taken of our space brothers and sisters "in the Physical", various photo interruptions similar to the above will appear. Guide editor, Bill Cox, during recent trips to Egypt and South America, viewed hundreds of snapshots taken by others in those countries, and took a few of his own displaying this phenomenon. In most cases, the energy often occurred with the same persons being photographed. Sometimes the subject would appear in hazy form, indistinctly seen in the picture behind the energy manifestation; and in some cases, the (space?) persons, fail to appear in the photo at all. Manifestations described in the foregoing are frequently separate and distinct from photo phenomena encountered in mediumship materializations, where ectoplasm and more dense vibrating energy may appear in the photograph.

Dear Mr. Cox,



3

I have only recently become acquainted with your publication and the research it represents, but I read with great interest your comments upon Egyptian music in #42. Perhaps the following will be of interest to you.

The great British musicologist Kathleen Schlesinger, published the results of twenty years' research in a little-known volume, *The Greek Aulos* (Methuen, 1939): The goal of her work was to discover the principles underlying the ancient musical systems or modes. In order to grasp her discoveries we must realize that the ancient scales are in no way related to the modern "tempered" scales of more familiar Western music. (Each semitone in our chromatic scale has a vibrational frequency 1.06 times the frequency of the adjacent, lower tone).

On the other hand, ancient music was based on "isometric" or equal measure: the scales were generated by boring fingerholes equidistantly along the resonator of a reedpipe such that the inter-fingerhole distances represented an integral fraction of the pipe's total length.

Such a disposition has the amazing property of mimicking the physical differences between notes in the natural harmonic sequence in this manner: Start with a given number, say 12 (the Phrygian mode). If the total length of the pipe is regarded as twelve, fingerholes are bored from the bottom up at intervals of 1 unit each. Such a pipe will play a scale whose intervals correspond to the exact physical intervals (but in reverse) of those between the twelfth and sixth harmonics of the pipe's fundamental (lowest) tone.

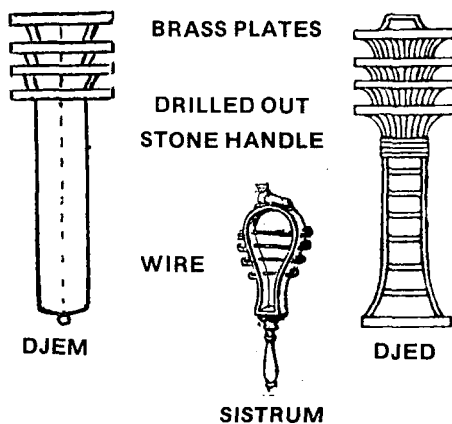
The ancients used seven different modes employing modal determinants, as these numbers were called, between 11 (Dorian) and 20 (Hypolydian). As it became customary to use a scale of eight notes, in some cases a note or two were deleted and in others were added, or actually borrowed from the next octave up, thus preserving the accoustic integrity of the mode.

I have constructed many replica aulos of my own to verify these findings and Ms. Schlesinger's theories match the facts precisely, as well as agreeing with all archaeological findings and extant writings from those times. The modal system is, moreover, worldwide, occurring in such diverse lands as South America, Greenland, the Middle East, India, and the Far East, suggesting rather strongly a common ancestry. The ancient Greeks were not known to possess a sophisticated knowledge of accoustics, at least not to the extent of being able to measure vibrational frequencies, which suggests they inherited but did not fully understand the theory behind their musical systems.

Your comment about "flattened" intervals is consistent with the modal system, for in most modes the notes of the lower tetrachord of an octave are considerably flatter in pitch than those of a modern scale. It is well known that the Arabs modified the ancient modes considerably, but many similarities remain.

Modal genesis can take place only on the aulos, or reedpipe, for the flute obeys rather complicated harmonic laws and stringed instruments must be tuned to an outside standard. But the aulos is very simple, always resonating a predictable fraction of its total wavelengths. Robert P. Miller; Standardville, VA.

THE AULOS... was considered the most effective of all wind instruments introduced into ancient Greece (900 B.C.), and since its sounds were produced through a vibrating, double reed (similar to an oboe or bassoon), the Aulos was definitely not a flute as claimed by uninformed writers. The instrument which originally came from the Orient, was often made up of two pipes with tuning holes ranging in number from four in the earliest Aulos, to fifteen in later models. The player as depicted in old wall paintings, frequently wore a leather band covering the mouth, tied to the back of his head, presumably to increase pressure on his cheeks to develop a bellows-like effect.



THE ANCIENT EGYPTIAN DJEM... also known as Djed, Tet and Tat, is a remarkable trace of man's higher aspirations through the initiations and the use of initiatic instruments, rods of power; the sceptre, crook and so-called flail. Because of the attraction, control and wielding of higher (cosmic) energies through the use of these subtle but potent devices, early Egyptian, Sumerian and Mayan Priest King's and initiates likely changed frequency, enabling their bodily vehicles to enter higher planes of vibration. In dynastic and pre-dynastic Egypt, various royal leaders included the letters Djem in their name: Paynedjem 1st, Nedjemat, and so on. The DJEM illustrated here was sketched from an ancient model on display in the Cairo Museum (Exhibit #8684 A) and has a stone handle with bored hole to allow the metal wire (rod) to pass through it and the 4 horizontal brass plates above. The instrument, psychotronic in design and materials, also resembles the historic musical sistrum. The DJEM at some distance curiously produced 2/10 of one gauss (minus north) reading on Dr. Ralph Sierra's hand held magnetometer.

THE WAXING AND WANING OF PYRAMID ENERGY

The continuing pyramid research of scientist, Joe Parr, of Santa Barbara, California, using a radioactive source shows that the form energy detected is an earth-to-pyramid, not ski-to-replica phenomenon. Moreover, Parr has documented peculiar parallels with changes in energy noted simultaneously with west coast earthquake and volcanic upheavals, though there was at least one exception. Sunspot activity, moon and seasonal cycles also produced pronounced effects during tests.

Other discoveries made by Joe Parr, include the presence of a rapid gravitational shift, and while daily changing the orientation of the pyramid model — away from due north-south, east-west alignments, some surprising changes in the readings were observed. Parr used an E-cell as the radioactive source and bombarded his test pyramids with negative ions which seemed to enhance the pyramid's power at all times.

Here are some results and theories through May 12, 1980, with tests continuing through the end of this year:

THE DEADLY LURE OF ULTRA-VIOLET LIGHT... A United States firm that manufactures an insect killing device, claims that U.S.D.A. investigation reveals some 300 flying bugs, are light sensitive, phototropic in nature and invariably respond to a particular type of ultra-violet light, "far beyond the capability of these insects to see", the firm adds, "many attracted from distances extending over 1/3 of an acre."

Now, this instrument doesn't poison or electrocute the hapless mites, it drowns them in a pan of water, once the bug has been attracted to the device and vacuums them into the waiting water pan below.

The ingenious black-light lures the creatures with the gusto of moths rushing to candleflame. The ultra-violet light, invisible to ordinary human vision "seems to capture (insects) because they can't — or won't — fly away." Even the government scientists who discovered the phenomenon or the entomologists who tested it are at a loss to explain why the device works, except that it does.

At one level, it appears the minimal 30¢ a month cost and ideal solution to a bug-free existence has at last been found. But, there are hidden and little known karmic consequences in killing of any creature, and for any reason. 1. The insects obviously have higher frequencies of vision and remote sensing, a gift that enables them to survive tremendous odds in our 3-dimensional world. The gift if manipulated against them, against the rhythms and built-in protections afforded by nature: So tampering with nature's laws and rhythms at any plane creates disharmonies with its own kind of retribution waiting sometime, somewhere.

2. Etheric and/or astral sight, possessed by flying insects is scientifically proven by this discovery. Couldn't we learn many things about invisible worlds from these creatures? New ways of observing diagnosis, healing, rerouting them to wild gardens and havens, sanctuaries where man and insect may co-exist without killing? Man and man, for that matter. 3. Finally, that the insects can see with higher levels of vision shows that the invisible (light) can be seen by lowly creatures. Thus, clairvoyants who come into, or who are born with this extraordinary faculty of seeing are not just imagining or self deluding themselves. Many Psychics do see things not accessible to ordinary sight and they should be congratulated or forgiven for this gift, that is, according to the position taken by friends and relatives who don't always see what other creatures see.

1) PYRAMID ENERGY (with the ability to influence matter) appears at this time to follow cycles. These are:
a) A yearly cycle that peaks at NEW moon (between Mid-May to Mid-June) and dips



CAM... Soccer-Futbol players and fans (130,000 of them in Brazil) all wear pyramid hats. "You just have to be present to experience the extraordinary energies built up during the game", says Paul Louis Laussac, Parapsychologist, of Belo Horizonte, Brazil. "The presence generated is indescribable."

SPACEMEN... Exhibits numbers #102 and #103 in the Cairo, Egypt museum, reveal metal formed characters resembling idealized Cosmonauts, extraterrestrial space travelers. The objects are between two and four thousand years old.

to it's lowest point at FULL moon (between Mid-November to Mid-December). The dip is exactly positioned from Exp 3 (Co-60), but the peak is in question due to the loss of negative ions at the same time. b) A longer duration influence which predominates over the first cycle. This cycle was not detected until energy decline, just following the full moon dip in December. The rate of decline was steep from December '79 to May '80 and accounts for an estimated 9/10 energy loss based on the ability to influence Gamma sources of different energy levels. There is no sure way of knowing the period of this cycle at this stage, but I theorize that it might be linked with the 11 year sun-spot cycle. Sun-spot numbers show a rise coincident with the research period. Sun-spots alone do not cause any effects, but the probability of sun-flares occurring during a peaked sun-spot cycle is greater, since they transmit energy to the earth by heavy particles and this energy has been recorded at the laboratory. The last flare to be detected was on the 240th research day (October 19, 1979). After this time energy levels took a steep dip. If flare activity is the prime mover of the pyramid then the theory might never be tested until 1989.

Paraphrased from the New Age Gazette: "There's enough on earth for everyone's need, but not enough on a polluted planet for anyone's greed..."

OPENING THE THIRD EYE... We continue to present here, information kindly furnished by the Indian Master, Kumaraswamiji, relating to the yogic method and purpose for opening the brow chakra or ajna center. It is not intended to force the opening beyond one's natural state, but rather enables one to arouse the latent qualities in one's nearly atrophied, pineal and pituitary and associated ductless glands. Direct all inquiries to Tapasvi, Shri Kumaraswamiji, Asharam, Tapovan, Dharwar Karnatak State, India.

In Yoga Shastra, the pineal gland is spoken of as the third eye, functioning in with a tilaka or spot. In the symbolic representation of Shiva, we see in the middle of his forehead an opening with red flames issuing therefrom. The third eye or the pineal gland is generally atrophied in man, because his tendencies have been physically focused downward as his mind became more progressively immersed in sexual pleasures. This eye and the Kamac organ of lust are said to be like two points of balance. One has to kick the beam when the other grows heavy. Only when we outgrow Kama lust (libidinosus), diminishing its power, then will the pineal gland reopen and flower out into full brilliance.

Physiology presents a functional hierarchy at three levels: 1. the humoral (or the body humours) 2. autonomous and, 3. voluntary. The humoral plays a basic and important part in the preservation of one's body. Yoga science has long recognised the electro-structure of one's physical body. The humoral's essential function regulates all chemical processes going on within one's cells and is called metabolism, ruled by one's glandular system. The chemical elements absorbed in food are first turned into colloids by means of one's various digestive processes and then passed into the blood later to be distributed as reserves by one's endocrine glands.

The science of physiology recognizes the importance of one's middle brain and endocrine glands and has set a value upon the pituitary and pineal glands. A special relationship unites the pituitary gland with the roof of the third ventricle on the one hand, and on the other, the whole system of ductless glands functioning throughout the body. The third ventricle is a narrow slit lying near the base of one's cerebral hemispheres, separating the two thalamia from each other. At the posterior end of this slit, the pineal gland, a small nodule of grey matter, projects backwards and overhangs the corpora quadrigemina of the mid-brain. It is all that remains of one's third eye. In some creatures it adorns the forehead, a phenomenon observed in certain lizards dating back to the paleozoic period. One type of cyclopean lizard can still be found in New Zealand today.



TEMPLE OF THE MYSTICS NICHE... in the Queen's Chamber of the Great Pyramid of Giza. This beautiful, unfinished recess, photographed in the west wall of that magical compartment, which has encoded within its mathematical proportions, the hidden key to all measures, parts, units, halls, passageways, compartments, temples and forms comprising the Great Pyramid, and extends its influence far beyond the mighty precincts of Giza, Egypt.

The fortuitous discovery of a single scrap of ancient temple pre-Masoudi manuscript in the sacred libraries of Lhasa and in the Holy Thibetan monastery at Drepung, years ago, reveals instructions given to the early builders to implant this design in the Great Pyramid as a model for four future world temples, "to be built after 4,804 cycles of the days of the sun shall have passed" (one cycle being one year; therefore, 4,804 years). Based upon the information given, the mid-year of the Great Pyramid's construction in this instance, was set at 2,881 B.C. By computing the 4,804 years separation from 2,881 B.C. the date for building the "new temple" indicates A.D. 1923, said edifice "to be constructed over the great water and near the highest of water where the dying sun hath reigned" (west of the Great Pyramid.)

But going back to the base date of 2,881 B.C. the four temples planned for the future at that time were scheduled for construction 1331 years hence, (1550 B.C.), 1869 years (1,012 B.C.), 3679 years (A.D. 798) and the final one in the Andes, A.D. 1923. The locations of the three oldest temples now still in existence, some in their hidden domains, are the Temple of Heaven in China, Caracol of the Mayas and Holy of Holies in Jerusalem. A fascinating account of the most recently constructed temple; legacy of inner circle of the Andean Temple of the God-In-Gold will be investigated at this time.

West, over the great water (the Atlantic Ocean) to the high water (Lake Titicaca in the Andes) was erected in this century the Temple, the reconstituted (Sun in Gold, "where the sun hath reigned").

Visions of A Peaceful Planet, (record album) @ \$7.98 by Ancient Future, 12 Maple Ave., Kentfield, California 94904. This is a pleasing, musical rendition of varying moods. The flutes with strings excites, yet relaxes. Fong, Montfort, Wertheime and Klein, fuse Occidental and Oriental sounds to produce a new American music that still retains a folk quality while happily weaving through the sounds of spheres.

ORGONE ENERGY IN ANCIENT TIMES.. Hekaemsaf, royal leader in old Egypt, is portrayed in his tomb at Saqqara, wearing what appears to be — in its origin — an orgone energy garment. The front appears to be peculiarly interlaced with organic and inorganic materials. A suit of this type would likely produce higher energy effects attributed to that of Wilhelm Reich's orgone blanket. Similar wearing apparel was certainly used for initiatic purposes with the orgone covering producing a pre-determined energy effect upon the pharaoh or high priest's body. Experiments with this little understood force is not recommended and presented here as information only.

In 1922, the holiest of holy mystics (The Dali Lama) from Tibet, reportedly returned to the high, eastern slopes of the Andes, where a substitute new Dali Lama reportedly took his place in Tibet. Construction on the New Temple then began in 1923, as planned, and the design originally sculptured into the west wall of the Queen's Chamber in the Great Pyramid was incorporated into the New Temple.

Somewhere, high on the Andean altiplano, near the borders of Bolivia and Peru, lies this extraordinary edifice. On July 16, 1927, consecration of the first stone took place with the holiest of holy men from the city of Lhasa present. Their predecessors had thousands of years ago journeyed from an ancient temple center in the Andes, in the opposite direction, north, by way of Cathay and then to Tibet: thus return of the Holy Men to the Andes, completed the sacred fulfillment of a mystic cycle, to bring forth the destiny of an ideal civilization, "that shall be centered in the Americas". The Elusian Temples and sacred structures of Lhasa in Tibet haven't been overlooked in this plan, it is said, "each performing a specific role in the present world unfoldments on all planes of world service."

So, at 4 a.m. December 25, 1938, consecration of the new hidden temple of the Mystics, high in the Andes reportedly took place, with 91 envoys, representing 13 of the world's important spiritual centers. It was the beginning of Ouranos on Earth, meaning: "advent of...infinitely increasing and expanding activity". The wall receptacle in the Queen's Chamber is then the prototype for the anciently designed temple sanctum wherever it may be found, and these holy centers of wisdom and light will be recognized in due time by the key, their form, the purity of those present in the moment of greatest need.

PYRAMID FOOD PRODUCTION...

Pyramid greenhouse expert, Les Brown, of Bancroft, Ontario, Canada, says that through his research during the course of a year, he has demonstrated that up to 30 times as much food can be produced per square foot inside of a pyramid than on ordinary ground outside of the replica. In Brown's three story pyramid greenhouse, he says that water wasn't needed for plants grown on the first floor... The New Age horticulturist claims that pyramid grown foods may contain extra energy and are abundantly more nutritious than food-stuffs not so exposed. "A tomato plant in the pyramid greenhouse can produce up to 60 pounds of tomatoes in contrast to a similar plant bearing a great deal less, not having benefit of direct pyramid energy," he adds.

UPCOMING... Journey to Other Planets...

A Pyramid-Crystal Test... Chemistry & Alchemy... and, a great deal more...



Ash Bywater photo

DESCENDING ALONG THE NORTHEAST RIDGE... of the Great Pyramid in the early morning, following full moon meditation in the hidden grotto.

"SAVE THE AMAZON AND MANKIND" (S.A.M.)

Mankind is on a total destruction path. It has become a money guided cybernetic system bent on converting all living matter into bank accounts. Must we surrender our birthright to the domination of a coin-op, apocalyptic machine totally designed for planetary exploitation? It is now clear where the last battle is taking place: The Amazon region in Brazil, is not only the focal point of future world progress, but also the climactic and geologic center of our entire planet.

The Amazon is a promise of wealth and salvation for this resource hungry humanity and the final site of self condemnation for this most unwise specie called man. It is in this conflicting corner of the planet, alternately called "green hell" and the "green lung", that mankind will determine the quality, and/or totality of human survival as we might know and conceive it in the present age.

The question of survival not only has given impetus to the ecological sciences but has also created the new discipline of futurology of which, there are two opposite branches: one promising a technological paradise for the future rich, while the other, being sceptical to these technological promises, considers that mankind is indeed facing a very real threat and that it may not be adequately prepared to face the challenge successfully.

Leaving aside the secondary factors that could bring about an apocalyptic end such as a nuclear holocaust, let's penetrate the heart of the planetary survival question, the Amazon, our ace asset in this vital matter. Whatever happens to this ecoregion will affect your family wherever you may be on the globe. The cosmovision of an Amazonic tribe that became extinct in the last decade prophesied in metaphor that the heavens are supported by a tree, and that the skies will suddenly change when the Amazon basin is mistreated by man. Present data suggests that we may reach such a point of no return in less than 30 years.

The earth's axial alignment is related to the Amazon forest, with around 40% of our globe's vegetation being the key factor in climate buffering for the entire planet. Should this buffer continue to be destroyed at the present rate, rapid melting of the polar cap can be expected and combined with a dried-up Amazon, the sudden change could geologically throw our planetary top into a greater rate of precession. Consequent increase in CO₂ with polar ice cap melting follows scientific predictions that the expected, estimated massive vegetative loss in the Amazon will cause erratic motions of the earth on its axis and climatic disturbances thereby producing dramatic life changes all over the world.

Thus, humankind, bent on satisfying its enormously

Dear Bill:

I purchased a small cardboard replica of the Cheops pyramid in 1972. There was little information out about them then, so I set up my own experiment. Everyone used internal pyramid experiments. I decided that there might be external forces involved as well.

I painted the cardboard with a light blue enamel. When it dried, I overlaid a random curving circuit of gold lines with gold (real) paint and a thin brush. I placed an opal upon the apex so that all gold lines converged at the apex. I don't know how to use or interpret the results. But, when the room was darkened with only candle flame present, I could see a visible light emanate from the opal. This light oozed like a liquid down the sides of the pyramid onto the floor.

As I said before, I know neither what this means, nor how to use it. Then I lost the pyramid while moving to my present address. I am anxious to build a new one to see if the experiment can be reproduced. I want to build a few using different gems for each apex. At the very least, it is a wonderful and inspiring tool in meditation. Perhaps there is, as well, a more immediate practical use for the light it emits. I give this idea to you in the hope that your specialized interest in the subject will cause further experiments along these lines. I have a gut feeling that looking to the inside of the pyramid for a source of power has resulted in the exclusive use of a lesser energy than what may be found externally. I would enjoy feedback on this idea. Sincerely, Lucille Weisenburger, Delhi, New York.

blown appetite for natural and biological resources, is not considering the Amazon as the ultimate solution. And, here begins the final phase of human history, for man cannot exploit this zone indiscriminately and get away with it. We will observe increased activity and more excentricities in the earth's rotation upon its axis as deforestation of the Amazon basin proceeds. Besides, there are other ethical reasons for leaving this area alone.

We shall never be able to replace the Amazon's precious species and cultures. Man's greed for Amazonic resources has exterminated hundreds of cultures before they could even be counted. The loss in human lives and natural productivity is already beyond calculation. Only within the Pando region in a small corner of Bolivia, 42 cultures have thus far been sacrificed in behalf of rubber exploitations. News of other displaced Indian tribes and their extermination may never be completely known in our time. Amable S.A.M. (Save the Amazon and Mankind). Letters will be forwarded to the writer who is traveling in Bolivia, at the present time. eds.)

SACRED GEOMETRY

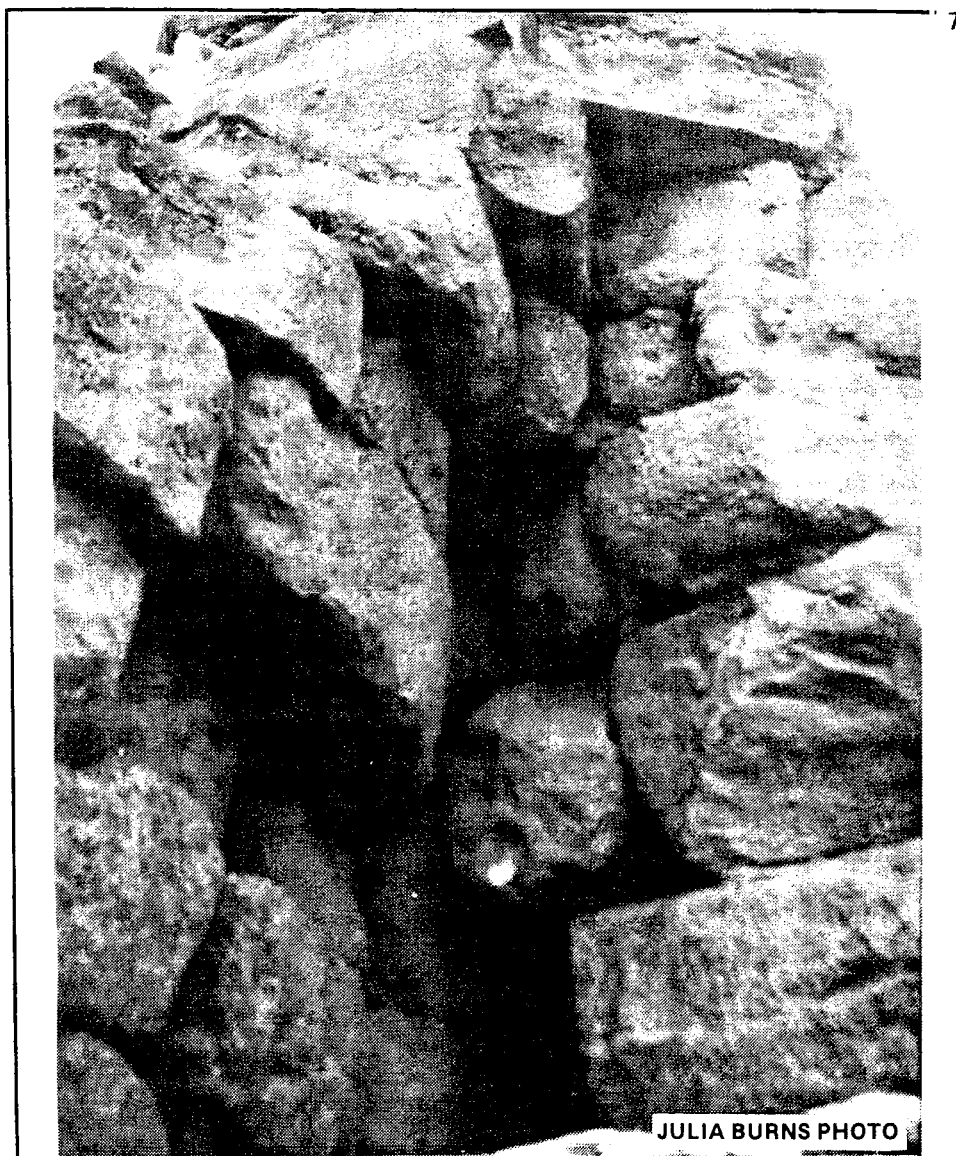
The Algebra of Alchemy
by Richard XP Sneed

ASTROLOGY'S GREAT YEAR. The shifting of the spring point into Aquarius is a momentous event, the passing of a month in the great year. With certain angular relationships taking place in the outer planets — Uranus, for example, (esoteric ruler of Aquarius) is shifting on its axis, sending more of its energy (an estimated rise of 30 % in the last 15 years) to electrify the minds of adepts and astronomers, scientists and ceremonial MAGICIANS ALIKE. In addition, there is the Pluto transition, with the Plutonian themes of sex, death and regeneration. We have effectively passed beyond the watery abyss of dreams represented by Neptune and the Piscean Age. The great days of enlightenment are being thrust into our hands. The books of Quabalistic and Esoteric doctrine are already out in mass market paperbacks.

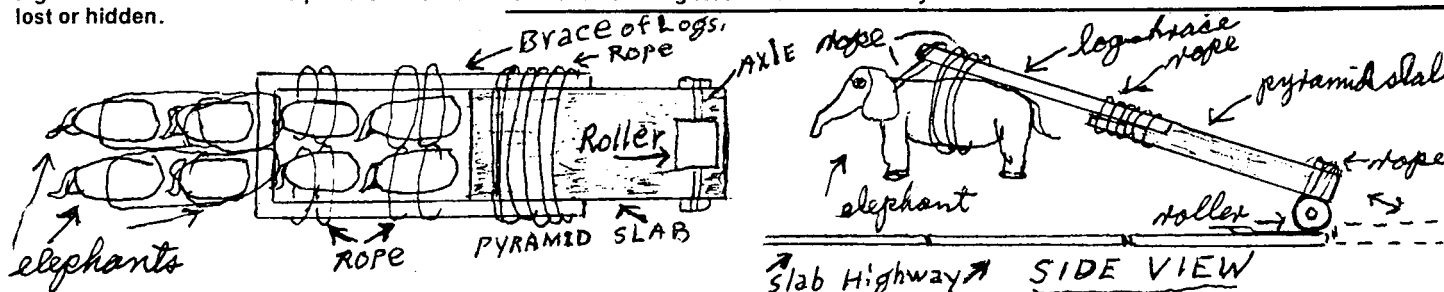
SCIENCE AND RELIGION ONCE UNIFIED. The remains of an elemental science presents certain mental images, known as demigods or archetypes. They are recognized as having an autonomous life of their own, coming into precedence in accord with the heavenly procession. They presumably cause a waxing and waning influence upon the cycles of astrology. The ancient division of time and number into 12's was derived from the twelve principal deities dominating history. Apis, the ancient bull-god of Taurean extraction, followed by a ram-god representing Aries, even preceded the advent of Christ (Ikthos, the Fish).

A LEGENDARY POWER INSTRUMENT.

"The grand master and priestess of Odin", as reported by writer Maurice Guignard, "were able to wield the power of diminutization (reducing in size), whatever was produced and transporting the miniaturized version through space in the Völurvolt, a small emerald cylinder-accumulator of cosmic energy. The magical control of the Völurvolt, attributed to these elite leaders, reportedly served them well for thousands of years until the early Middle Ages when the secret of its powers became lost or hidden.



THE LITTLE KNOWN GROTTO... high up on the northeast ridge of the Great Pyramid. The interior chamber, rugged, dusty and dirty, was cleaned up by a meditation group of eight persons connected with Mark Singer's Atlantis Rising Expedition in the Spring of 1980. Then, after burning incense, and setting up a shrine inside, with candle and flowers in a small wall cavity, the assemblage joined in a full moon meditation, sending out and bathing the planet with love and energy. Preceding descent to the base of the pyramid, all were greeted with a glorious sunrise along with the luminous orb of luna still seen shining forth in the eastern sky.



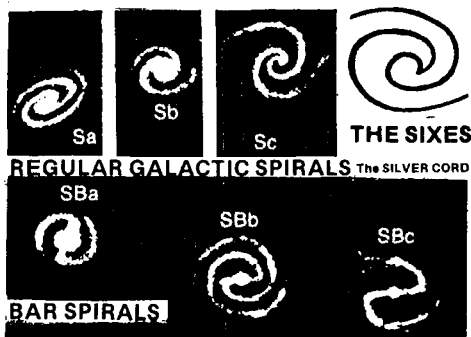
Dear Bill,

I believe I have solved the so-called mystery of the Great Pyramid's construction and why no trace of convincing evidence of how they were truly built can be found.

Oblong slabs were fabricated at the quarry and then laid end to end from there to the pyramid site, thus making a highly smooth highway to transport the slabs. I believe they moved the heavy slabs by using stone or wood rollers connected to the right end of the slab and attaching the other end of the slab with ropes to a

team of elephants or perhaps bulls, horses, camels or human beings. (See illustration)

The reason why no trace of the slab highway can now be seen and how the ancients built the pyramids was because they later took up the highway slabs one by one to construct the pyramids. During construction, the remaining slabs of the highway would be the amount of slabs they would need to finish the pyramids. So they first transported the nearest highway slabs from the quarry along the slab highway to the pyramid construction site. Ed Budak; Dorchester, Mass.



SIXES IN SPACE... The hidden Sixes, only visible to some clairvoyants, constitutes the connection in ones body that joins the silver cord which separates at its central union upon death (see Pyramid Guide #49, p.8). It is also seen in astronomer, Edwin Hubble's research work on spiral galaxies. The Sixes was a known phenomenon to the ancient Egyptians and now we see it again reproduced and labeled as an Sc Galactic Whorl, once again showing that man, woman, and child are truly models of the micro and macrocosm.

STONE PYRAMID GOES UP IN INDIANA

A 10,000 limestone block, 10-story Pyramid, 1/5th the mass of the Great (Cheops) Pyramid in Egypt, is under construction in Bedford, Indiana. The ambitious \$500,000 project funded by the U.S. Dept. for Economic Development, and conceived by Merle E. Edington, President of the local Chamber of Commerce is slated for completion in 1982.

The structure will be seen from as far away as Bloomington, 25 miles distant. Site of the monument, being erected along with models of Stonehenge and the Great Wall of China, lies amidst the largest limestone quarry in the U.S.A. referred to as "the limestone capital of the world," where blocks have been excavated and cut to provide material for gigantic edifices, such as the Pentagon, Empire State Building and some of this nation's most impressive City halls.

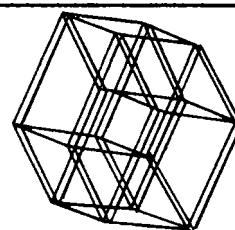
Bedford's Pyramid will weigh an estimated 60,000 tons and will be the center of attraction in a planned park featuring a museum depicting the milestones of history, children's play area, animal sanctuary and botanical garden. Some of the neighbors are upset, saying the project will obstruct their view of the countryside. Apparently the pyramid idea doesn't impress them as envisioned by Edington, who says that "...All that man has left in the record of history (other than in language) is found in his stoneworks..."

BOOK REVIEW... Sharing Nature With Children, Joseph Bharat Cornell, (paper) \$4.95. Author Cornell, shares earth's subtle gifts, nature, in waiting, for the ageless child who seeks joy in simplicity. Chapter headings include: How to be an effective Nature Guide, Choosing the Right Game for Time and Place; Close Up with Nature, How Much Can You See? Spotting and Attracting Animals; Play and Discovery, Learning is Fun. Fully Illustrated. Order from: Ananda. Publications, 14618 Tyler Foote Road, Nevada City, CA 95959.



THIS LIFE FORCE KEY ARTIFACT... discovered in the high valley of Viru, south of Trujillo, Peru (some 300 miles north of Lima and near the Pacific Coast) is more than 2,000 years old. Scholars attribute its source to the transitory Chavin-Mochica Indian culture. It was later stolen from the owner at Bordeaux, France, (about as useful to the thief as one seeking advancement on the path by stealing holy books). This rare, symbolic piece may have found its way into someone's private collection; so if Guide readers can provide any information as to it's whereabouts the true owners will be most appreciative. The Life Force Key, is among the most ancient and known of all symbols written about today. It is believed to be even older than the Egyptian Ankh and Tau Cross. Masters and initiates associated with the early Hermetic mystery schools displayed the key as a pendant or concealed it upon one's person in hostile lands, revealing the symbol only as a means of secret identification, indicating the owner's high level of wisdom and purified, human attainment. The Life Force Key is literally loaded with unchanging mathematical formulas, cosmophysical data, and represents the first and last letters of the Greek alphabet: The Alpha and the Omega. (See Pyramid Guide #17, May - June 1975)

GEORGE SAINT and the DRAGON... A delightful tale for children — regardless of age — who never grow old, by Vera Marie Gebbert, illustrated by Tony Prado, distributed by ESPress, P.O. Box 8606, Washington, D.C. 20011. I suspect the Dover, England, steamshovel that unearthed the medieval dragon is in itself a mechanical, 20th century monster of like kind. Anyway, the rejuvenated dragon, aroused from its centuries of dormancy, after a brief encounter with young George Saint, quickly sizes up the current world scene in which he finds himself, and does the only sensible thing any alert dragon would do... B.C.



MATHEMATICAL BLUEPRINTS REVEAL 4TH DIMENSION... in the form of a computerized HYPERCUBE (trademark protected). Brown University research scientists, to their surprise, have rediscovered a magical shape which was known to a 13th century Catalanian mystic and numerologist. Members of the scientific community say the ancient symbol, which has accidentally revealed itself via modern computer technology, enables one to see into the 4th dimension. At first, the image appeared blurred and after months of experimentation and the use of two color coded, overlapping images it was found that the symbol aligned with and aroused the rods and cones in the retina of the human eye.

The research team at Mind Development, Inc. applying various sensitive bio-feedback equipment, discovered that when one focused on the Hypercube certain psychic powers were released by the percipient while in altered states of awareness. These included bending metal with the power of released mind energy, mind projection, mental telepathy and improved intuitional states. Pioneer work in computer stimulation of the Fourth Dimension was done at Bell Laboratories during the 1950's.

Mind Development Research, invites the public to participate in further experiments. They can be reached at: 1839 Crestline Drive, Walla Walla, Washington 99362

MAP of EGYPT for PYRAMIDOLOGISTS!

Pinpoint the Pyramids, Sphinx, and Valley of the Kings. Large 40" x 30" in full color with intricate and legible detail makes an enlightening accessory for your pyramid area. (Explore map dowsing!) Only \$6.95 ppd. to "Heritage Maps" 69-L Cranmore Lane, Melrose, Mass. 02176.

"THE ETHERIC DOUBLE... (the matrix of one's physical atoms, ed. note) vivifies and gives sensitivity to the physical body; when one is able to attract the etheric double away from the physical body (to some degree) as done in spiritualistic seances. The physical body can be pricked or struck without feeling anything. Doctors, just beginning to study these facts will one day discover that it's not the physical body that possesses life and sensitivity but the etheric body." From Omraam Mikhael Aivanhov's THE BODY OF THE RESURRECTIONS Vol IX, available from Prosveta U.S.A.; P.O. Box 49614, Los Angeles, CA 90049 @ \$7.45, postage paid. Californians add 6% sales tax.

Publishing Short Run Books, Dan Poynter @ \$6.95 (paper) 104 pages, fully illustrated. Para Publishing Box 4232-50 Santa Barbara, California 93103. Want to publish your own Book, Handbook, paper or newsletter? Here's a "do it yourself how-to" manual from the opening format, typesetting, illustrating, pasteup, printing to completion at the bindery of your small quantity publication. Bring your manuscript into being as a printed professional piece ready for distribution, and most of all, into print quickly and inexpensively with a short-run publication. Cut costs drastically without sacrificing quality. Inquire also about Poynter's companion, earlier book "The Self Publishing Manual."



CAMEL WALK... Dr. Ralph U. Sierra, world authority on biomagnetism views the Giza ruins, astride a sure-footed, dromedarian taxi in Egypt. Dr. Sierra was one of 84 persons from the U.S.A. and Europe, participating in the expeditionary work led by Mark Singer in March of 1980. Much to our amazement Dr. Sierra, checking various exhibits and artifacts with his pocket magnetometer in the Cairo Museum, discovered that the right hand of the mummy Sitkamose, caused the magnetometer needle to move. Since the mummy couldn't be approached at close range, due to the protective glass case, what degree of magnetism could the deceased Pharaoh's hand really register closehand? How? Why? And magnets tend to steadily lose their power through time. This is a significant discovery worthy of investigation.

SUBSCRIPTION ORDER FORM

The Pyramid Guide, bi-monthly, International Newsletter subscription, yearly prepaid \$9.00, Canadian \$10.00 and overseas by airmail \$13.00. New ☐ Renewal ☐

Mail Postpaid to:

Street or P.O.

City & State

Zip

Current Edition Single Copies \$1.50

ORDER FROM: Life Understanding Foundation,
P.O. Box 30305, 741 Rosarita Lane, Santa Barbara,
CA 93105. Phone (805) 682-5151

BACK ISSUES OF THE PYRAMID GUIDE NEWSLETTER in any combination or series...\$1.00 each. 25% Discount...on quantity orders of ten or more Previous Editions

REDISCOVER THE WONDERS OF ANCIENT EGYPT

World Symposium, Visit the Pyramids

March 15 to April 1, 1980

(Seventeen exciting days @ \$1598.00 from New York)

Tour package includes Holiday Inn, American Breakfast, daily tours, seminars and workshops, many extras. Tour Ancient Egypt and the Pyramids with scholars and scientists who are throwing new light on history.

Every evening presents lectures and seminars and tour leadership, featuring guest speakers: Bill Cox, Daniel Kolos, David Coville, Dee Jay Nelson, Steven Halpern, John Anthony West, John Davis (Director, Coptic Fellowship), Paul Johnson (President, New Age Center, Orlando, Florida), Dr. Edith Fiore, Ph.D. (Clinical Psychologist), Dr. H.M. Banerjee (Director, Shafenberg Research Foundation, Kingfisher, Oklahoma), Julia Burns (Spiritual and Psychic Healer), Rocky McCollum, Stephen Schwartz... plus many other special guest speakers.

OPTIONAL EXPEDITION TO INDIA: April 1, 1980 — April 10, 1980

Deposits starting October 1, 1980. For further information:

Please call immediately: Mark Singer 918-665-2460, or after hours: (918)252-1393
Or write: 4312 S. Mingo Road, Tulsa, Oklahoma 74145

Speak to a flower and it will answer, but perhaps not the first time, for it does not know you.

Sympathy is for tears; compassion for the cause of the tears.

Elwood Babbitt

Crystal Craft

PURE QUARTZ CRYSTAL

COSMIC CALIBRATIONS

1" AND 2" BASE PYRAMIDS

1" (AND UP) SPHERES

1" AND 2" BASE CONES

1" (AND UP) CYLINDERS,

1" BASE DOUBLE PYRAMIDS

CUBES, AND RECTANGLES

SPECIAL ORDERS ON REQUEST

THADDEUS KROL • BOX 743 • SUMMERLAND CA 93067

STRANGE TOMB WALL PAINTING

from Page 12

Who can deny? They are marvelous works of art, and may have additionally been some form of family heraldry, ornamental decorations, household items or even personal doodles, but at other levels of study, these tomb wall representations, and others similar, though not identical, repeat in their constant appearance at archeological sites throughout the world. (Lower right) Close observation shows that these various forms were the forerunners of the Tesla Coil and other modern electrical devices. They so closely resemble psychotronic (mind operated) instruments. This concept, profusely illustrated and explored in detail is available in the paper by Bill Cox "ANCIENT EGYPTIAN TECHNOLOGY" distributed by the Guide @ \$2.00 plus 25¢ handling costs. Finally, the tomb complex of Dr. Sin Habel, clearly shows that he was definitely an initiate of the higher mysteries, only one step removed from being a priest king himself. It also indicates that he lived in a remote time when the great subjective technologies of the past helped man to lift stone blocks by means of anti-gravity, to erect massive, since unduplicated temples and monuments; to manifest the unforgettable, though little understood engineering and cultural works of a high order. Have we lost touch with these marvels? Even in Sin Habel's tomb, are we only seeing decadent copies of an even more extraordinary period that preceded the doctor's era by perhaps thousands of years? Are they Atlantean in origin? Can they be traces of artifacts and a forgotten technology brought to earth tens of thousands of years ago by extraterrestrials?

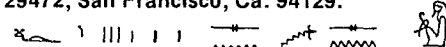
Before deciding, one should be aware of numbers, the directions in which the lines point, the size, shape and possible purpose of forms and attachments, and lastly, remember that these photos only represent a small portion of the grand inscriptions lining the Subterranean walls of Dr. Sin Habel's family tomb in Egypt NI ANKH MAK HOR.

Light Transport Foundation is dedicated to research and helping members during the coming "hard-times". Services include data and help with food, clothing, and shelter. Members receive information from Earth-Energy research. At the esoteric level of membership, L.T.F. claims esoteric knowledge for the New Age... not re-writes of past teachings. Free information: c/o L.T.F., 308 National Bank Bldg., Del Rio, Texas 78840.

ASTRA'S 1980 Anniversary Weekend... Friday, October 17th (preliminary). Instruments of Initiation, Bill Cox...

EXCEPTIONAL, SENSITIVE Lithographs of 7 paintings by noted psychic artist, Dora Tennyson. (Stamp brings you color brochure.) Dora's extraordinary color prints are actually visual mantras, and for many observers, provide windows into the **SPIRITUAL NOW**. These inspirational paintings display light and energy rays that blissfully impinge on human awareness to awaken the wings of life in one's cocoon. Send stamp for free color brochure to: NU-Age Art, Box 609, Goleta, CA 93017.

SPIRALS... a bi-monthly publication — featuring articles by great New Age thinkers. We aim to bridge the gap between science and mysticism. For example, read: "The Message of the Sphinx", Elizabeth Van Buren; "Life Before Life", Helen Womback; "Towards a Paranormal Brain", Gopi Krishna; "The UFO Debate", Brinsley le Poer Trench. Sample copy 75¢. P.O. Box 29472, San Francisco, Ca. 94129.

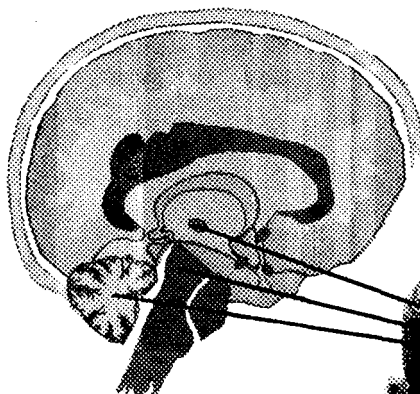


Saturday, Oct. 18th, **MAGNETIC FORCES and ENERGIES** in the NEW AGE. Mystical Ways to Health, Dr. Robert Chaney., Magnetic and Radiant Healing Energies, Bill Cox., Mystical Magic of Grace through Holy Spirit., Questions and Answers in the Ancient Wisdom (Kundalini, 3rd Eye, Health and Healing, Initiation and Self Mastery), Dr. Earlyne Chaney... Sunday, Oct. 19th, "A New Sense of Destiny, Dr. Robert Chaney., On Making Good Decisions, Dr. Roger Miller., Atlantis — Past Present and Future, Floren Ontiveros... Monday, Oct. 20th, The Secret Dimensions of Devas, Nature Spirits and Elementals, Bill Cox... Tuesday, Oct. 21, The Esoteric Meaning of the World's Great Music, Bill Cox., The Three Great Truths, Dr. Roger Miller., For information: Astara 800 W. Arrow Hwy. Upland, Calif. 91786, Phone (714) 981-4941.

CRYSTAL PENDULUMS... clear, smoky, rose, and amethyst quartz pendulums, in three sizes and grades, from \$3.00 to \$8.00 each, PPD. These pendulums are made of natural Brazilian Quartz Crystal, bell or leaf-cap mounted, with thread or monofilament line attached; ideal for any dowsing assignment or quest, where mind energies are believed to resonate in frequency with one's mental attunement with electronic-optical quartz of high Brazilian quality. The 3 price scale has been determined by opaqueness to clearness, from pea to marble sized shapes; and whether there are certain characteristics involving pugs, rutilations, radiation bands, cleavages, angels hair, and symmetry, or lack of same. Weights run from approximately 9 carats or 2 grams up to nearly 1/2 oz (50 to 60 carats or 12 grams each). For more information on crystals and catalog, write to Crystals; P.O. Box 30305, Santa Barbara, CA 93105.

MEDITATION

The Psychic Bridge...



to the Inner Mind



Have you ever experienced a sense of futility—seemed to be thwarted in your accomplishment? Have you ever struggled for a new vital idea or solution to a problem? Behind your thinking mind may lie the very answer, the inspiration or vision you need.

You have a tremendous reservoir of mental power waiting to be called forth. It lies just beyond your surface thoughts. True meditation is not idle random thinking—or mere concentration which ties the mind to fixed ideas. It is a technique that opens channels to the full power of mind and a

realization of self. Every stupendous achievement—in anyone's life—began first with meditation.

THIS FREE BOOK EXPLAINS

Meditation is neither strictly an oriental nor occidental practice or fantasy. It is a natural function of mind power. Let the Rosicrucians (not a religion), an international society of men and women devoted to the study of natural laws, explain this marvelous phenomenon of meditation to you. Write today for the free book, Mastery of Life. It tells how you may use this technique for a fuller life.

Please use this coupon
or write to:
SCRIBE: A. B. D.

The
ROSICRUCIANS
(AMORC)

San Jose, California 95191 U.S.A.

Scribe A. B. D.
THE ROSICRUCIANS (AMORC)
San Jose, California 95191 U.S.A.


I am sincerely interested in the practical application of meditation and related natural laws. Please send me a free copy of MASTERY OF LIFE.

Name.....

Address.....

City..... State..... Zip.....

PIECE FOR A JIG-SAW



\$20.00 or £ 6.95 postage pd.
UFO Propulsion, scientific evidence, 388 pages, 107 drawings, hardback cover \$12.00, Hiltens, 9 West Hill, Dartford, Kent, Eng-Dal 2EL, England.

THE PYRAMID GUIDE NEWSLETTER, LIFE UNDERSTANDING FOUNDATION and the Editorial Staff does not accept responsibility for statements made on the quality of product or service offered by advertisers.

The PSYCHIC OBSERVER and CHIMES. Finest spiritual and scientific information in the psychic field. One year (6 issues) \$9.50, Canadian and foreign \$12.50. Box 8606, Washington, D.C. 20011.

JOURNAL OF NATURAL HEALTH and parapsychology, specializes in special knowledge of biomagnetic and natural healing and noxious rays, the unknown cause of many diseases. \$15.00 annual sample copy \$1.00 bill. A must read. P.O. Box 2222 Niagara Falls Ont. L2E 6Z3 Send for free list of unusual health booklets.

PYRAMID GUIDE READERS... To be sure of a prompt reply, all inquiries requesting information by return mail in the USA, MUST include a self-addressed stamped envelope: foreign subscribers include 50¢ per page reply expected by air.

Not receiving your newsletter...? **ADDRESS CHANGED...** Be sure to notify us if you move, as the post office doesn't forward non-profit foundation 3rd class, bulk mail.

IN STRANGEST EUROPE... Peter Ratazzi Read about the marvels and little known facts of greater Europe, of Madonnas, Miracles, Magic, Monsters and Mausolea, Runes, Art mysteries and off the beaten path mysteries still in evidence today. **TEN DOLLARS** Post free by seamount.

For details, write to author: 90 Neville Avenue, Hove, Sussex, England.

WOULD YOU LIKE TO KNOW WHO BUILT THE GREAT PYRAMID OF GIZA AND WHY IT WAS BUILT?

DO YOU WANT TO UNDERSTAND THE SECRET BEHIND PYRAMID ENERGY WHICH IS THE SCIENTIFIC KNOWLEDGE OF STANDING COLUMNAR WAVES?

READ: PYRAMID ENERGY EXPLAINED

In 1968 we, Mary and Dean Hardy, had an experience with a U.F.O. During the experience we were told to build our sons a pyramid. Since that time we have learned that the pyramid is an interdimensional communication device in which humanity can learn to overcome time and space.

Cost of the book is \$6.00

We also sell blueprints on how to build these special pyramids. For free information on the blueprints or to order the book, send to: Dean and Mary Hardy, R.R.#5 (Dumont Lake), Allegan, Michigan 49010.

PLEASE NOTE: PRICES SUBJECT TO CHANGE WITHOUT NOTICE

MAP DOWSING and OIL LOCATING handbooks, by Verne L. Cameron and Bill Cox, \$2.75 each. Unique and functionally Practical Dowsing approaches to the object of your search, both locally and at a distance.

CASSETTE TAPES by BILL COX, recorded live, on: SHAMBALLA, FORM ENERGY, and THE TWO ASPECTS OF MIND (INTUITION vs INTELLECT). Now available @ \$6.00 each. Add 50¢ for postage and handling.

Step-by-step Dowsing books
TECHNIQUES OF PENDULUM DOWSING and **TECHNIQUES OF SWING-ROD DOWSING** by Bill Cox. Two books (sc), dealing with the fascinating science of Dowsing. Each one thoroughly describes methods and the type of equipment used to locate underground water, minerals, missing persons and pets... how to find and date ruins and buried artifacts, test soil, planting areas and the quality of foods and liquids. The applications for dowsing are endless. Both books, profusely illustrated, are written in an interesting informative manner by world renown dowsing expert Bill Cox. \$3.00 each.

AQUAVIDEO, Locating Underground Water by Cameron & Cox, (soft cover), \$6.95. One of the most comprehensive, step-by-step, fully illustrated Dowsing Methods ever written.

Order above books from **LIFE UNDERSTANDING FOUNDATION**, P.O. Box 30305, Santa Barbara, Ca. 93105. Please add 50¢ for postage and handling, foreign add \$1.00. Californians kindly include 6% sales tax.

RECEIVE 3 BACK ISSUES AT REGULAR PRICE AND SUBSCRIBE FOR 1 YEAR AT HALF-PRICE, TO CHALLENGE THE UNKNOWN WITH US!

THE NEW ATLANTIAN JOURNAL

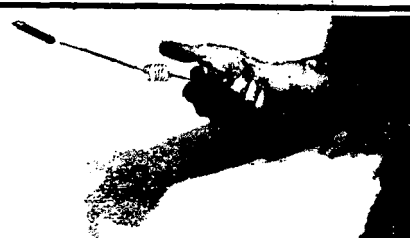
The Nations Most Unique Quarterly
A Magazine of the UNKNOWN,
the UNEXPLAINED and UNEXPLORED
3 back issues and 1 yr. sub. \$7.00

5963 32nd Avenue North
St. Petersburg, Fla. 33710

AN ORGONE ENERGY INTERLACING GARMENT... was seen to cover the front of Pharaoh HEKAEMSAF's body when his tomb was opened at Saqqara, Egypt. (ref. Exhibit P3-53668, in the Cairo Museum).

THE HIGH COUNTRY QUARTERLY... \$1.00 s.c. Back issues, each is a collector's item containing stories of the old west; articles of heritage, Indian and Old Timer Profiles by 'Guide editor Bill Cox. Write for free catalog and related information P.O. Box 30305, Santa Barbara, Ca. 93105.

The Light Transport (HOLOGRAM) Foundation, Inc. 308 National Bank Bldg., Del Rio, Texas 78840. If you are interested in Indian Rock Art, Shamans, Illumination, Global Preparation for Shifting of Earth's Spirit Matter Consciousness; Geological Weather Phenomena and Climate Control affecting Human Conditions; Karma, Earth Survival and Cosmic Blueprints for the Future, don't hesitate to write to L.T.F. Conductors at the above address. Very interesting...



THE ORIGINAL CAMERON AURAMETER... a combination Dowsing compass, weighing device and upright pendulum... twenty-two years in its development bringing it to its present form (unchanged since 1952)...masterfully created and designed by the late Dowsing Mentor, Verne L. Cameron...Over 7,000 in use throughout the world by both amateur and professional Dowsers. Some say it's easy to channel with the Aurameter, and ideal for sensing things and substances, locally and at a distance; forms, auras, vibrations and emanations; beams and energies of a more subtle nature, from organic (animate) life, creatures and so-called inorganic (inanimate) things. Nickel plated at \$49.50 and Copper plated Aurameters at \$60.00, postpaid first class in the U.S. Life Understanding Foundation, P.O. Box 30305, Santa Barbara, California 93105. Phone (805) 682-5151.

TRY "THE AMAZING BEDMAGNET" only \$26.00 ppd. Improves your health. Many testimonials-satisfaction guaranteed or money back. Can. Society of Geobiology & Biomagnetism 5854 Swayze Drive Niagara Falls Ont. L2E 6Z2. Will send free literature on low priced Biomagnets. Have helped many poor sufferers. Maybe we can help you.

EGYPTIAN * EXOTIC JEWELRY * PRODUCTS *

NEO-PYRATECHNIC PRODUCTS *

Specializing in Egyptian Jewelry, Statuary, Camp Fabrics, Posters, T Shirts, and books... Please write for a more complete list of the items we carry. All jewelry in cloisonne, sterling silver or 24 carat gold plate. Also fired pottery jewelry and imported carved stone scarabs. Falence tile and stained glass also available. P.O. Box 622, Joshua Tree, CA 92252. Robert Short.

METASCIENCE
QUARTERLY

The Parapsychology Journal for Today!

- Telekinesis
- Astrology
- Precognition
- Graphology
- Out of Body
- Tarot

Subscriptions

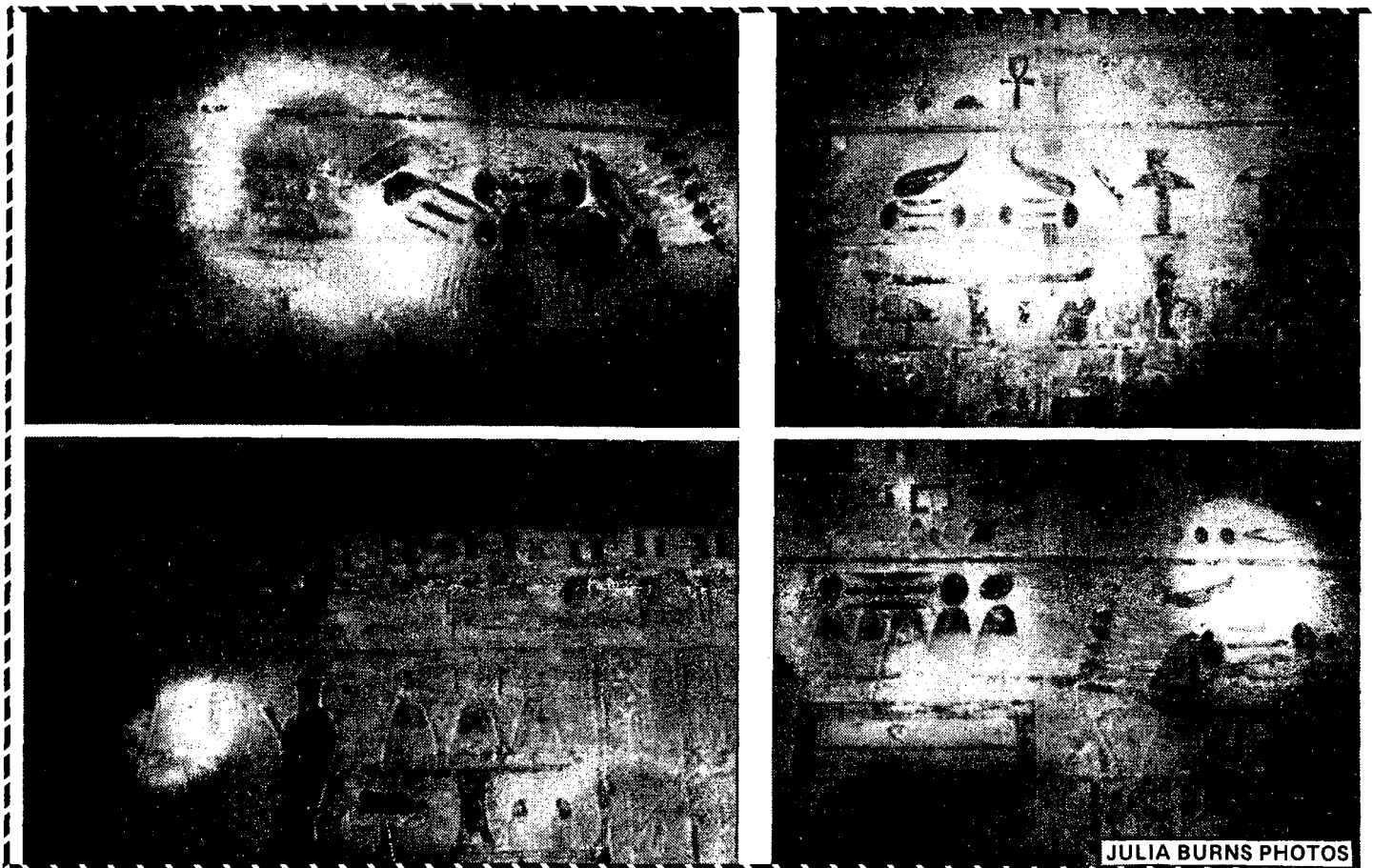
\$14 One Year (4 issues)
\$26 Two Years (8 issues)

Not available at newstands

Box 32, Kingston, R.I. 02881

FREE HOLOGRAMS

While they last!



STRANGE TOMB WALL PAINTINGS... Photographed in subterranean vaults of Dr. Sin Habel, reportedly the personal physician of Pharaoh Unas 5th dynasty (4,500 years ago). The burial chambers, located some 100 feet below surface are only reached by means of a steel, winding staircase which descends via a narrow, vertical shaft, whose entrance is guarded by a small stone building lying just behind the pyramid of Unas. The pictographs, glyphs and hieroglyphs in the Sin Habel burial vaults, rival that of most Pharaohs in uniqueness and mystery. (Upper left) peculiarly stacked and seemingly leaning oval forms whose ends are capped by smaller oval or circular ends. The stripes, when considered in 3-dimensional terms, along with the entire form assembly, suggests the possibility of these object representations being cylindrical in shape; and to what purpose? Notice the 7 spikes slanting upward to the right and terminated at the ends by what appear to be tiny spots. There's a great deal going on in this section of the tomb wall, numerous line inscriptions radiating

outward (or inward); glyphs, though not evident in this photo due to inadequate light, provide what appears to be a holding stand. No one yet consulted has given a satisfactory explanation, or even an educated guess as to the meaning of these enigmatic symbols. (Upper right) though no known, modern technology matches the inscriptions herein shown, advanced science and intuitive technology research strongly suggests that these figures and devices likely represent ancient physical instruments which attracted, stored and released higher energies of a kind we can only label as life energies, power that drew its source from the more finely attenuated realms, higher frequencies of electricity, magnetism, ionic, solar, lunar and other forces, activated by the focussed concentration of ancient minds, much more evolved beyond anything we can imagine today. (Lower left) Here we see related assemblies of subjective instruments that will require open-mind study, intuitive-objective evaluation and quite likely their re-creation for testing under precise laboratory conditions.

Continued on Page 9

LIFE UNDERSTANDING FOUNDATION

741 ROSARITA LANE
SANTA BARBARA, CALIF. 93105

