

# #PYRAMID GUIDE

NO. 31

Vol. 6, No. 1

Sept-Oct 1977

International Bi-Monthly Newsletter • Single Copy \$1.00 • Yearly \$6.00 Canada \$7.00 • Overseas, by Air \$10.00

## THE MYSTERY PRIEST OF 'PALENQUE'

Excavations at the 'Palenque,' a pyramidal tomb recently discovered at the site of the ancient city Chiapas, Mexico, contained the remains of a high priest with jade mask. The noble 'Palenque' is currently popularized as an ancient astronaut due to certain wall inscriptions in the burial vault. The 'find' adds a new dimension of thought to archeological diggings.

Pat textbook answers no longer satisfy the inquiring minds of New Age Archeologists and their open minded supporters. A fair number of archeologists are beginning to look beneath the veneer for a deeper meaning in these historic sites. "There's more involved here than the pomp, vanity burial and self-aggrandizements once presumed to be priority with ancient kings, high priests and leaders of the past," reports one archeologist who wishes to remain anonymous, withholding his name due to science's continual demands that one must conform to crystallized thinking or forever be banished from realm of 'cushy' jobs and lucrative grant monies.

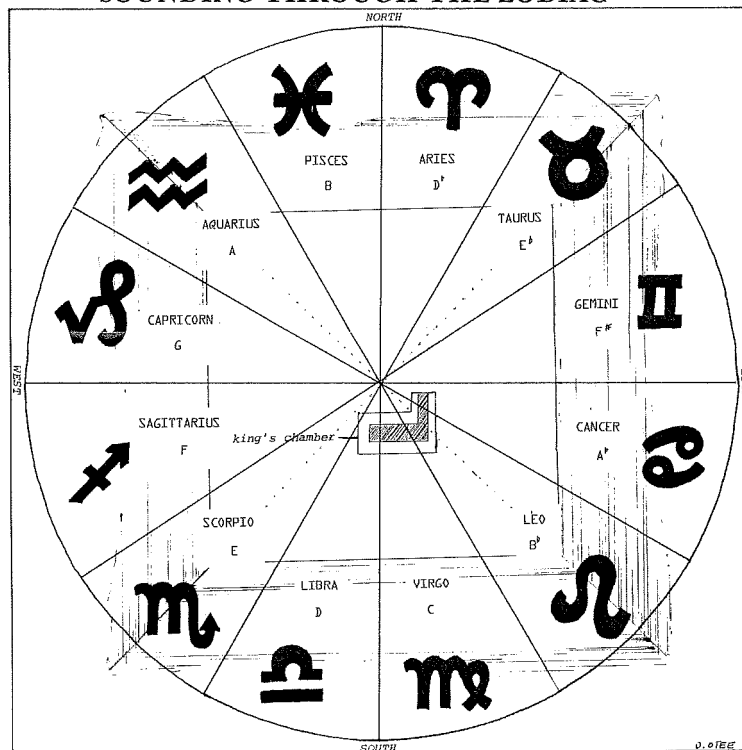
Some explorers of antiquity have seemingly overlooked, or have chosen to ignore the higher mysteries of the 'Palenque,' one of the great archeological wonders of North America. As one searches through countless books, records and documents about the 'Palenque,' man-pyramid site, one must conclude this is no ordinary burial vault containing the usual royal or priestly character of the past. Thelma Dunlap, of Long Beach, California, a most ardent and thorough researcher, asks: "What is the true significance of the 'Palenque' having blond hair? What is the meaning of the crystalline ball held in the left hand, and a cube in the right hand of the skeleton?" A photograph in the book: "The God Kings and the Titans" by Joseph Bailey, shows these aforementioned handheld devices — "certainly not ornamental pieces," according to the anonymous archeologist. What do the jade crescents in the photos of Liu Sheng and spouse truly signify on the outside page of this newsletter?

It's possible the 'Palenque' was a caucasian priest and master of the Egyptian and Oriental mysteries. Mrs. Dunlap also refers to the book: "In Egyptian Language," by Wallace Budge, on p. 223 describing 'tenet' with the 'ball.' The 'object' and jade masks hold the key to a profound secret. The mask covering the face and head region could be a repository of the human brain, a computer of the mind, placed at this point of power as a kind of storage battery of thought energies. Related, geometrically perfect objects in the burial chambers may be better understood when we discover the hidden meaning behind these and other energy devices, such as the Egyptian ankh and rod, the vril stick, and wand of the Magi.



Diane Breitwieser

## THE GREAT PYRAMID SOUNDING THROUGH THE ZODIAC



THE SOUND OF THE SPHERES... may be encoded in the Great Pyramid's — as yet undiscovered — secret chambers. By overlaying the astrological wheel (as shown above) and lowering the heavenly zodiac, divided into its twelve parts, equivalent to the twelve semi-tones of the chromatic scale in music, and superimposing the astrological disk over the Great Pyramid's superstructure, some interesting correlations begin to appear. 1. Note how ARIES, the first sign in the zodiac begins the clockwise progression of sun signs around the scale, commencing with due north... a coincidence? 2. The heart of the King's Chamber (although portions appear in Leo and Libra) resonates in perfect vibration with the musical tone 'C' corresponding to VIRGO, symbolized as the place of the Lords of Wisdom. 3. CANCER, representing initiation, is in A-flat (Ab), the precise bell-tone sounded when the lidless coffer in the King's Chamber is struck with a sharp object. The coffer has frequently been described in ancient texts as the bed of the initiate into the higher mysteries. The King's Chamber also represents the human, auditory canal and the coffer its *membrana tympani* (ear drum). Is that great monument a listening receiver of the Divine harmonies and rhythms of the cosmos?

4. KUNG, alluded to by the Chinese as the Great Tone and Sound of Nature, the combined keynote voices of the wind, seas and waterways and the subtle roar of the elements, is identified with the note 'F' in Sagittarius. Can we predict the location of the Pyramid's secret tonal compartments according to the zodiacal positions in their superjacent alignments with the Great Pyramid? 5. The recorded evolution of music now confirms the existence of the more complex chromatic, twelve, semi-tone scale existing as far back as 5,000 B.C. with the discovery of one eleven string harp found at the site of the ancient city of Ur, and another reconstructed eleven string lyre dating back to 4,600 B.C. in Assyria. These dates, according to some estimates, precede the construction of the Great Pyramid in 2628 B.C. Both the twelve tone scale and the Great Pyramid are likely in age, eons of time beyond the 5,000 B.C. period.

6. Is the Great Pyramid the symbolic sounding board of twelve tones upon which the conventional, modern-day, diatonic (seven-tone) scale may be played? (see Pyramid Guide, issue #28.) Corrinne Helene, writing on the esoteric nature of music said: "The numerical power of twelve is the highest spiritual emanation active in the universe, and seven transforms that power into concreting and building forces that operate on the physical plane."

The late Max Heindel once wrote: "The whole solar system is one vast

Continued on page 3

## THE VANISHING DRAGONS

In England our patron saint, St. George killed a dragon and rescued a maiden. This dragon may personify evil, but across the border in Wales we find the Red Dragon is the honoured emblem of the whole country. Dragons in China are especially venerated.

Dragons represent the flow of potent earth forces which can be used for good or ill. In China these supposed energy currents were called Dragon Lines and in England, Ley Lines. Until recently the idea of both power lines and dragons seemed equally fantastic to scientists. However at one time the Pole Star was in the constellation of Draco [the Dragon.]

From pre-history we now move rapidly forward to the court of Queen Elizabeth I, where there flourished a secret society with many famous names among its members. From an article by Andres E. Rothovius in an American journal "East West" entitled "The Adams Family and the Grail Tradition" I learned that this society had called themselves Dragons. I had found clues but had never heard of their secret name.

Sir Walter Raleigh, Christopher Marlowe the playwright, Thomas Hariot the mathematician, Dr. John Dee the wonder-working magus, who served as a model for Prospero and Chapman who translated Homer were all members. Shakespeare satirized them in "Love's Labours Lost" and named them 'the School of Night.' They studied alchemy and the lost esoteric arts. I think Shakespeare was piqued that he wasn't invited to join this inner coterie of dabblers in psychic matters but Shakespeare knew the whole field from the inside. His plays frequently contain evidence of psychic phenomena, but when he mentions 'dragons' he couples them with 'night.'

It was a dangerous thing to belong to such a study group in those days of witch hunts. After the death of Queen Elizabeth these were stepped up by James I who had a mania about the hidden knowledge. It seems dragon society members placed great hope in Henry, Prince of Wales, a brilliant youth tutored by Raleigh while the latter was imprisoned in the Tower of London, following his unsuccessful adventures in America. Young Henry frequently begged his father to release Raleigh. Alas, the young prince died of a fever at eighteen and Raleigh was promptly executed.

Back in America, in the eighty-seventh year [1823] of his long life of ninety years, the second President of the United States, John Adams, placed an engraved stone on the top of the grave of his first American ancestor, Henry Adams. The burial ground was located in the yard of the Congregational Church across from the City Hall of Quincy, Massachusetts. The inscription reads:

"In Memory of  
HENRY ADAMS

who took his flight from the Dragon persecution in Devonshire  
in England, and alighted with eight sons, near Mount Wollaston."

Historians assume "the Dragon persecution" referred to the persecution of Puritans, but the Adams family were not Puritans. The tombstone confirms that these great men were Dragons escaping from persecution. Perhaps the closely guarded secret of their code name was revealed for the first time on this tombstone. The word "alighted" suggests President John Quincy Adams envisaged his forbears as flying dragons.

The senior, Henry Adams brought his family from the village of Barton St David in Somerset, while Sir Walter Raleigh came from the adjoining county Devonshire. Dragon persecution likely occurred in both counties. Barton St David lies in the heart of the vast terrestrial Zodiac which centres upon Glastonbury and according to researchers, is the most vital spot in all Britain. By the 17th century the astronomical-astrological knowledge enshrined in this area of the Glastonbury giants was fast being forgotten by all but a few. The Dragon society may have tried to perpetuate this knowledge. The Adams family moved to "the New World" described by Shakespeare in "The Tempest" in the hope of reviving there something of the integrating power of ancient knowledge.

Here is the last clue, again with its American link. I went to Glastonbury this summer to attend a conference convened in honour of a group from Santa Barbara, California, headed by Donald Cyr, editor of "Stonehenge Viewpoint" and Bill Cox, editor of the "Pyramid Guide." During a tour of the Zodiac, we arrived at a tiny lost village with the surprising name of Low Ham. It consisted of a few scattered cottages, a farmhouse and a church, most improbably placed by itself with no graveyard. The site marked the middle of a vast shallow grassy bowl surrounded by ancient earthworks. It gave exactly the opposite

Continued on page 3

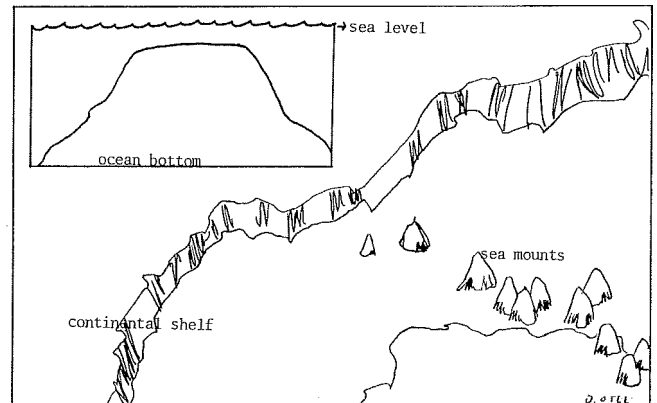
## Fourth Dimension Reachout

THE SUB SEA PYRAMIDS  
AN EDITORIAL OBSERVATION

Suddenly it comes to me: HEY! I'm not descended from ape persons of the past, as conceived by our stone-age anthropologists. Evolutionists dig up a few skulls and reconstruct in their minds that ALL history of Homo Sapiens is one long progression, originating as cells in the seas, and developing on up through mammal and ape-hood to our present state of human development. What a despairing thought. I have long thought, if there's any hope for the future of man/womankind, we have to be descendants of Divine Beings, who may have, on more than one occasion, occupied our planet in the millions, perhaps billions of years of Earth's long and unrecorded history. Why don't we find 'their' skulls? If they were here, where did they come from? outer space? Where did they go?

It seems plausible some of our forefathers/mothers, adamic man/woman, when they saw the pattern of lethal, self-destruction and power possessed by other earth-dwellers who were misusing the awesome [solar] powers known in those times, that they just decided to 'get off the planet' — while the 'getting was good.' This belief implies that Divine intelligences of the dim forgotten past knew technologies and levels of human development far in advance of those known today, and that although there may be some evidence of man's evolution throughout the subsequent millenia, earthlings have through the eons, been de-evolving into surprisingly gross states of materialism. I look back on the wars of recorded history. Other than creating immediate changes, did they make earth a sweeter place to live? Isn't war no better than a large-scale, back-alley fistfight?

These prophetically scheduled, rediscoveries of prehistory 'beings' and the astonishing cosmic forces they could wield upon command, I am certain, are closely tied to the world's cyclopean pyramids, geometric mountains in stone. The ancients understood the deepest secrets of crystals and lasers. The great minds of humans in the past left their mark... anyone for moving some of their stone monuments or statues around? I see rays of hope for a better world. The messages and keys are revealed to us through the pyramid 'maat': the 'mother form...' the cube 'faith': the 'father form...' the tetrahedron, the 'eternal,' and 'ultimate subatomic form...' and the sphere, the 'immortal' and 'cosmic' form. Bill Cox



SEAMOUNTS AND ABYSSAL HILLS... Isolated peaks rising from the ocean floor along the northeastern U.S. coast might be mistaken for undersea pyramids reported in the last issue of the Pyramid Guide, but most likely not. These would-be, island formations and the Pacific ocean flat-topped 'Guyots' (See inset) can be definitely excluded as origin of the recent sub-sea, Atlantic Ocean, pyramid disclosures in the 'Guide.'

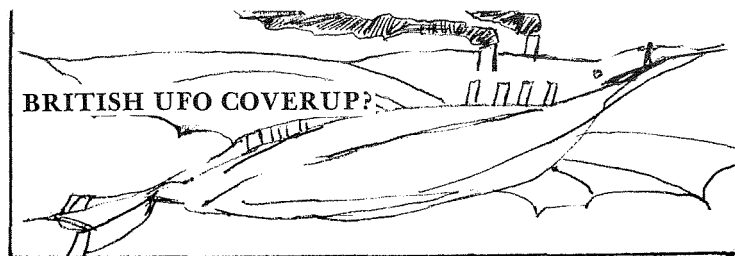
Pilots, mariners, divers, lobster fisherman and independent investigators have for years been seeing huge pyramids and domes in the clear waters of the Atlantic Ocean. The region described here lies on or near the continental margins off the eastern coast of the United States. Maybe some of the things reportedly seen were elevated submarine relief features above the ocean bottom; precipitous would-be island formations not quite high enough to emerge through the Atlantic surface. When the ocean lacks turbidity one can see great distances deep into the ocean basin in the Bermuda Triangle area; huge submarine canyons, the continental shelf and slopes; the flat-bottomed, "abyssal" plain and oceanic rises; hills, escarpments, trenches and seamounts. Of particular interest are the cone-like, ocean bottom hill formations found in the Bermuda Rise. Some reaching 90 meters high are up to, two to ten miles wide. In the Kelvin Seamount group, isolated conical peaks emerging from the ocean floor rise 900 meters high. The flat-topped cone hills found in the Pacific Ocean are called 'guyots.' They are volcanic cones which once protruded above sea level but their peaks were long ago eroded flat by continual wave action over great spans of time. Ultimately, the guyots sank into depressions in the earth's crust. The higher mountains which might also be mistaken for great ocean pyramids beneath the sea are to be found further out in the mid-atlantic ridge, where peaks attain elevations of 12,000 feet or more above the sea-bed.

## PYRAMID GUIDE

An international bi-monthly newsletter, issued each year: Jan-Feb; Mar-Apr; May-June; July-Aug; Sep-Oct; Nov-Dec. Published by Life Understanding Foundation, a religious, non-profit organization. P.O. Box 30305 (741 Rosarita Lane) Santa Barbara, Calif. 93105. Phn (805) 682-5151. Bill Cox, Editor. Annual Subscription \$6.00 U.S., \$7.00 Canada, all other foreign, (for prompt service) by airmail only, \$10.00

Opinions expressed by contributing writers do not necessarily reflect those of the Pyramid Guide, Life Understanding Foundation, its editor or editorial staff.

Copyright © 1977, by Life Understanding Foundation. Printed in the United States of America. All rights reserved. No part of this newsletter may be used or reproduced without expressed, written permission of Life Understanding Foundation.



Rex Dutta, a leading UFO investigator appeared on the British T.V. program "Alternative 3," June 20, 1977, curiously the night of the summer solstice, and 30th anniversary of the famous Kenneth Arnold 1947 flying saucer sighting in western U.S.A.

Just before the program's transmission began, England's evening papers set about shooting it down as pure fiction. The text in every case read the same, according to Dutta, betraying a central directing source, whose? and why? The show was scheduled to immediately follow 'live' to Sidney, and already the Australians had gotten the word. The London T.V. Times had earlier written... "What this programme shows may be considered unethical, but this film is transmitted tonight as a challenge to those who know the answers to the questions raised to tell the truth..."

Highlights of "Alternative 3" included: 1. Information that top technocrats from every country have mysteriously disappeared (the brain drain), and that these *selected* individuals have been transported to a colony on the far side of the moon, thus escaping a world cataclysm. 2. The question was asked of Dr. Jeffry Warner: "why far-side-of-the-moon news of the Apollo and Gemini flights was suppressed and why the astronauts were hushed up who has seen, filmed and photographed saucers while in Lunar orbit? 3. And what about the news leak describing mile-long mining machines on the back-side of the moon? Did astronauts Armstrong and Aldrin see UFOs take off from the Lunar surface during their 1969 Moon walk? 4. Former NSA technician Otto Binder, claimed NSA transmissions were censored, that the REAL SEARCH was for life on Mars. 5. Also that the USA and Russia were secretly cooperating in space launchings to get a chosen elite onto Mars, since Earth pollution and freaky planetary weather forecasts a 'LET'S GET OFF, WHILE THE GETTING IS GOOD,' among the elitists. 6...that climatic warfare is now a possibility. 7...that the U.S. and Russia have been jointly exploring the Bermuda Triangle UFO mysteries (Project Polymode). 8...that a chosen 5% will presumably leave Earth in complete safety, but where does that leave the remaining 95%? 9...that disposal of nuclear waste is already a losing proposition. 10. Why the ongoing U.S. Air Force project Bluebook UFO whitewash? 11...that advanced races are already living under dome-like structures on the dark side of the Moon. 12...that artifacts revealed in some 100,000 NSA photographs include: Towering spires, mechanical rigs, sculptured craters, boulders that run up hill; black, red and orange glass beads, enormous flat roofs; various geometrical shapes, artificial dust-mist clouds and unexplainable art works; tracks, lights and numerous objects of various description.

Dutta brought up some very far-out and touchy subjects. By mid-summer 1977, it didn't appear suitable answers were immediately forthcoming.

Announcing: **CLEAR LIGHT ENERGY CONFERENCE**, an exciting symposium of esoteric sciences, to be held Dec. 2, 3 & 4 in Santa Barbara, Ca. This conference is open to the public and all those interested or involved in research in the fields of parapsychology, higher mind, and higher consciousness. For further information contact: Clear Light Foundation, P.O. Box 40338, Santa Barbara, Ca. 93103

### THE GREAT PYRAMID SOUNDING THROUGH THE ZODIAC (Continued)

musical instrument, spoken of in Greek mythology as the seven-stringed lyre of Apollo. The signs of the Zodiac may be said to be the sounding board of the Cosmic harp, and the seven planets are the strings; they emit different sounds as they pass through the various signs and therefore they influence mankind in diverse manner. Should the harmony fail for one single moment, should there be the slightest discord in the heavenly band, the whole universe as such must crumble." (From the Musical Scale and the Scheme of Evolution, The Rosicrucian Fellowship, Oceanside, Calif. 92054.)

### THE VANISHING DRAGONS (Continued from page 2)

*impression when compared to the church tower on top of the Glastonbury Tor, that is, a place of religious worship erected on a mound. This was a church in a hollow. In spite of its strange isolated position, inside it was well maintained with all treasures intact.*

*I have never seen a more perfectly carved lace ruff etched in stone worn by one of the recumbent ladies on her tomb, and her husband's stoney armour was no less impressive. But inside the railings of another family monument the clue, revealed by the presence of a seven or eight foot-long ancient spear, with a notice to the effect that "This spear was used to kill a Dragon." Barton St David lies a hill or two away. Maybe this was the reason why fellow 'Dragons' flew to America and alighted near Mount Wollaston! Patricia Villiers-Stuart 12 Empress Place, London S.W.6.*

How were the psychic pictures produced? Simple! — The originals are lead pencil and spit. The process was discovered years ago by certain Americans. (Willoughby for one...)

Density Slicing... A density slicer costs at least \$30,000. Thus this could be an expensive hobby if you buy the necessary equipment.

#### The procedure and items needed:

1. Small white cardboard cards
2. Soft lead pencil
3. Sharpen your pencil typewriter eraser to fine point.
4. Cover one side of black card with pencil lead.
5. Wet your finger in your mouth and smear lead.
6. Study dried card carefully for faces.

Note: Make several cards; faces will appear on one, if not read on.

7. Outline the faces with your pointed eraser by drawing them in if needed.

Note: Most people must relax their minds to see the faces.

8. Number seven in my collection was extended by using a variable intensity photocopier. Smaller faces appeared. Cards which produced no images before presently showed faces when gradually lighted through step copying.

The photocopier acted as a slicer but imagine the potential computer with video feed etc. Something can be developed on microcomputers.

If readers are interested, I can supply more information but its best to experiment first. Cards should be viewed at different angles and under various lighting conditions.

Please let me know how your tests work out. George R. Harrison, Share Development, 108 Third Ave., Arnprior, Ont., Canada K7S 148.



### FACES: PSYCHIC IMAGES KIRLIAN PHOTOGRAPHY

Hobbyists, for details you'll have to send \$1.00 to George Robert Harrison, researcher of Share Development, 108 Third Ave., Arnprior, Ontario, Canada K7S 148. George has rediscovered an old process and welcomes inquiry. In his correspondence with the 'Guide, he writes:

"It is my opinion Kirlian photographs contain faint mind or psychic images which may not seem to be there but can be retrieved with luck. The method can be expensive because of the many tries necessary to obtain images, assuming the photocopier employed is working at its' best, otherwise, you are doomed to failure.

#### Procedure:

1. Obtain Kirlian photos of the fingertips.
2. Enlarge the photos to 5" x 7" color prints.
3. Convert the pictures to black and white, using a variable intensity photocopier. The intensity adjustment will be used several times in different settings, until one or more images possibly become visible. You must expect the faces to be mostly small and faint, but not all. While making several copies as you adjust the intensity from high to low, or vice-versa on the same color picture, some of the images will seem to develop before your eyes; others will appear, and then quickly disappear on a new copy with only a slight adjustment in intensity. This is a crude form of gray density slicing. The images are mostly faces but other images may appear.

## MONOLITHIC MYSTERIES: A SEARCH FOR THE TRUTH

Engineer Edward Kunkel pondered the mysteries of the 80 ton hanging door at Karnak, Egypt. It had been hung using two sockets about the size of bowling balls for pivot points. What sort of power could the Egyptians have used to handle such a heavy door and set it in place? Ed understood why the Egyptian temples had been built but how and why was the Great Pyramid constructed? Then he guessed that the pyramid tunnels might be the remains of old water works.

In 1932, Ed began to compile a list of ways to apply forces, methods to move heavy objects, ways to set huge stones in place with precision. Finally, Ed forecast a conclusion to his deductive reasoning. It was water power! Hydraulics! Water could be the key to solving the problem of handling massive objects effortlessly. Did the Egyptians employ hydraulic pumps to raise water to a higher level? If so, it was difficult to believe that water had been moved by bucket brigades or carried in jars.

Then the clues became apparent, the pieces of the puzzle began to match up. The ancient Egyptians must have used water power to hang the door at Karnak and to construct the Great Pyramid. The internal tunnel system and chambers of the pyramid could have formed a gigantic hydraulic ram pump efficiently lifting hundreds of thousands of gallons of water each day. Ed Kunkel reasoned that the massive Pyramid structure was necessary to contain the tremendous pressures and vacuums created by the sudden stoppage of about 88 tons of water in motion. The fine joints in the masonry were required to maintain air-tight integrity of the hydraulic ram pump.

After visits to the local junk yard and tinner's shop, Ed accumulated enough material to build a scale model of the essential features of a ram pump based on the pyramid's tunnel and chamber system. The first model didn't work as well as expected. Ed had overlooked some details which were obscurely contained within the pyramid. Back to the sketches and more research, sure enough, there were details... The shape of some internal features were much more important than he had expected.

Ed made modifications, including a different method of using a prime mover. He set the water in motion in his model by the sudden release of a vacuum by opening a valve. Water shot a distance of about twenty-two feet outward and ten feet upward. Heretofore, he used an electric motor and a small pump to create a vacuum. Ed used a fire to create a vacuum, probably in the manner employed by the ancient engineers. He used wood for fuel because it gives off carbon-dioxide directly which is heavier than air and is dissolved in water.

With assistance from the Sportsmen's Club of Leetonia, Ohio, Ed set the pump up on the club's grounds in 1966 for a demonstration. The model pump performed well and later Edward Kunkel was awarded U.S. patent #2,887,956 (for a hydraulic ram pump using principles deduced from features of the pyramid's internal system). As time passed, nature's elements or the spirits of the ancient Pharaohs seemed to disapprove of the pump's existence. Twice, in recent years, the working model has been wrecked in windstorms by small twisters which seem to strike and only do damage in the area containing Pharaoh's Pump.

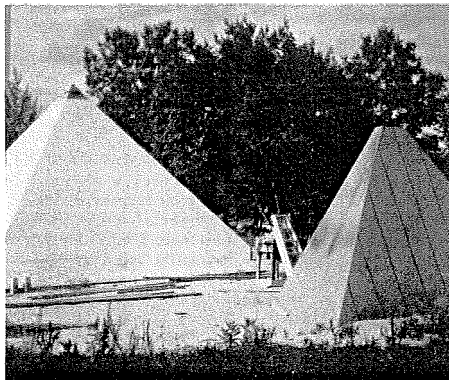
Ed has contributed a valuable hypothesis to the field of pyramidology and anthropology. It has withstood the test of time and met all challenges head on. His hypothesis and search for truth goes a long way toward answering the questions of how and why the Great Pyramid was built. Historians should rewrite a chapter or two about the methods of construction used in ancient Egypt.

## ALTERNATING RAZORBLADES FOR A READY-SHARP EDGE

Karl Righter, of 200 Maitland Ave. #180, Altamonte Springs, Fla. 32701, recently phoned to tell of his own personal experience sharpening razorblades inside a 10" x 10" base, plastic pyramid.

"I keep two blades aligned lengthwise on a north-south axis under the pyramid at all times, except when shaving," he said. "In this way, by alternating them, they get a day's extra charging before use... I leave the blade in the razor with the head mounted on a pedestal. The handle touches the pyramid's base (tabletop)," says Karl.

"After six weeks of continued use," Karl continues, "the blades seem to 'tire a little' and it takes longer to regenerate them. Thus alternating the blades to every other day use creates longevity." He welcomes letters from researchers. (I find a peculiar phenomenon with my Norelco triple-head electric razor. It requires two days for a full sharpening, and gives a smoother shave when the heads face upward rather than facing them in the expected north direction. B.C.)



**CAPPED PEAKS...**hold Zenith above two impressive pyramids constructed by Dean and Mary Hardy, of RR #5, Lakeview Drive, Allegan, Michigan 49010. The smaller model will serve as a transmitter and both replicas were designed by advanced research scientist, Kenneth Killick, of Stittsville, Ontario, Canada. (See also, the Hardy's ad on page 7 of this issue.) They welcome inquiries from Pyramid researchers.

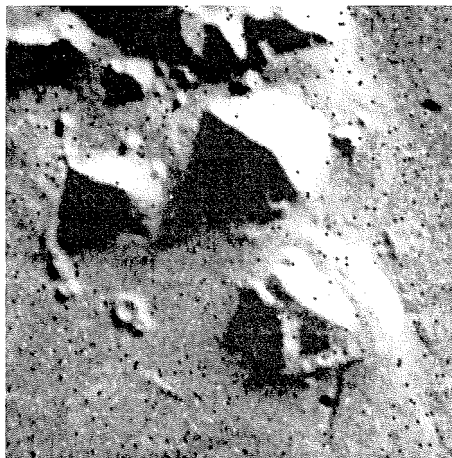
## THE SECRET MANTRAS REVEALED

Source: The German Book 'Die Macht der Sussen Worte' also: from New Religious Movements 'Update' Aarhus, N. Denmark

The correct MANTRA to be vocally intoned according to age groups are given as follows:

Age	Mantra
3 to 10	ING
10 to 12	IN
12 to 14	INGA
14 to 16	INA
16 to 18	AING
18 to 20	AIM
20 to 22	AINGA
22 to 24	AIMA
24 to 30	SHIRING
30 to 35	SHIRIN
35 to 40	HIRING
40 to 45	HIRIN
45 to 50	KIRING
50 to 55	KIRIN
55 to 60	SHIAM
Beyond 60	SHIAMA

The sounds of high and noble music are believed to raise the pitch and greatly accelerate the motion and activity of every atom in one's body. The vital centers (Chakras or energy centers) are also aroused through the proper use of MANTRAS and open pathways to higher consciousness.



**A GIZA PYRAMID ON MARS...**Recent photo #76-H-593 Viking 1-61 P-17384 (35A72) taken from deep in space, near the surface of Mars suggests the possibility of natural or otherwise constructed, giant pyramids existing on Earth's neighboring planet. The much larger surface area glossy photo of this phenomenon may be obtained from (and thanks to Chris Lightner) c/o Bara Photographic, P.O. Box 486, Bladensburg, MD 20710 \$1.75 PPD.

## PYRAMID REPLICAS ENERGIZE WATER

Water and the various spectrum of liquids probably respond more quickly, and beneficially to pyramid energy than any single substance known.

In actual laboratory tests, the molecular chemical constituents of water are altered within a short period of charging inside a simple pyramid model. Marine creatures, greatly dependent upon or living in water are seen to be more healthy and rejuvenated; tranquil, growing larger and living longer. The known exceptions are the tiniest of marine life, including micro-organisms that function as, or with, algae, mold, fungus and similar water polluting bacteria. The rule seems to be then: Gross or low-vibrating life forms creating, or depending upon decay for their existence don't fair well inside pyramid replicas. Swimming pools and fish tanks influenced by pyramids are somewhat purified, according to reports.

The foregoing discoveries therefore support the long-held theory that all life contains varying degrees of growth and decay. The key to physical harmony lies in a balance between these two extremes, with growth as a primary objective — (there's too much decay going on already.)

If water is indeed charged by a pyramid into a higher state of essence, it then follows that most substances of medium or high water content will be brought into a more purified, quality, long-lived condition. Mummification can be retarded in two or more ways: 1. Keep the organic fruit, vegetable or flesh food under the pyramid in a "live" state. With plant kingdom specimens, be sure they're connected to the supportive root (life system), otherwise... 2. Preserve your deceased or amputated specimen in water to slow down the natural dehydration process... Where doubts exist as to the power of the pyramid to preserve and rejuvenate, just try a 15 to 30 minute charge with stale citrus, pineapple and fruit juices, tea or coffee. Notice the dramatic improvement in the taste of these and other liquid refreshments, including cheap wine and poor quality tap water.

## ADVANCED RESEARCH SCIENTIST SHARES HIS PEARLS

"Science is coming up with a thing called 'tachyon pairs.' They are quite unique because tachyon pairs are subatomic particles right down in the bottom basement of all energy levels. They are really wonderful little characters, small enough to move quite happily, unobstructed through the whole maze of all form-matter energy without ever losing their own identity... And tachyon pairs do something else very beautiful upstairs in astro-physics. If you want to get a shot or probe into deep space, you *zoss* it off the face of the earth and head it towards some gravitational field. You let it get sucked into that field's certain 'Goethian' value and then use a little *umph* to glide out the other side. The glaze angle is any angle less than 45°, being a more or less obtuse angle, the greatest angle one can get out of anything. With anything less, you glaze into it. Now this is what the tachyon pair will do..."

"As available souls get into a dynamic balance in which there is a wobble they can go quite happily into and out of 'atomic particle soups'...and every time they go in, they pick up a little bit of energy, and away they go, making a quiescent location. To see what's happening when you do this, you nullify all the normal resisting parameters available on the face of this earth. Some, by the way are mentally induced, and then you can see this tiny little work-force and refocus it; put it where you want it..."

"If you like to go back in time you'll find this is what happened with the good old 'Keely' machine. Playing the violin didn't do a *bloody* thing for it, but Keely knew... He had to show somebody something quite physical or they would have blown their corks and hamstrung the poor guy as some kind of a witch or wizard. So we do have before us an inter-relationship between the technical and the mental on different levels; much different than what we knew in the past. To some people this is a quite surprising and a shattering thought, but everything is mental.

(Excerpted from a cassette tape sent in reply to Don Reed's letter, from Kenneth Killick of Ontario, Canada.)





The Great Pyramid can be compared with the sun. It is an instrument of life, power and the deeper mysteries.

Ask various members of a group: "What does the sun give you?" Answers will be diverse, yet correct. One replies: "The sun lights the world; it enables me to see." Another answers: "The sun warms me." Still another comments: "The sun makes things grow — you know — photosynthesis in plants, etc..." The next exclaims: "The sun is a great electromagnet, without it there would be no electricity, magnetism, radio, global, and other energies." And finally: "The sun is the control key in our solar system, it keeps earth and our nearby planets in orbit."

Now, the Great Pyramid surely belongs in a category with the sun. Readers, writers, researchers, students, visitors, guests and travelers repeatedly tell us this greatest of all the world's seven wonders is an ancient 'time capsule.' Encoded within its diverse stone blocks, passageways, chambers, and measurements, in its precise location, orientation and outer structural form lies the key to the mysteries and wisdoms of the ages. It is, according to pyramidologists, a record of the history of mankind on this planet, containing exact information relating to the known and unknown (Biblical) past, a chronology of significant events encompassing the present, ancient prophecy and the future prospects of mankind's evolutionary growth or downward slide into technological oblivion and/or survival in the new age.

The Great Pyramid, and replicas, are alchemical instruments changing both organic matter (mummification, dehydration and preservation) and so-called inorganic matter (sharpening metals, affecting electronic devices, etc...) in beneficial ways. It energizes plants so they grow faster, better, attaining higher essence, *ad infinitum*... The Great Pyramid is a temple of meditation, initiation and rejuvenation. It is one-half million ton block, slide-rule, computer and source of three, and higher (four dimensional) mathematics.

From another but compatible point of focus — Corte Madera, California, Bionics Institute Instructor, Jonathan Krown writes:

*"I came across information in my visit to Giza in Egypt which radically changes my ideas about the Great Pyramid; this coupled with extensive research time at Glastonbury and Iona in Great Britain makes me think pyramidologist Ben Pietsch's basic approach may be wrong, that is, in the sense that he is working through the pyramid information riddle backwards."*

(Editor's Note: Bernard Pietsch's articles appeared as follows: Pyramid Guide #11 "Voices in Stone" and "Message of the Great Pyramid," and issue #12 "Thoughts from a Pyramidologist" and Pyramid Guide editions #13 "Bio-rhythms Expressed in the Great Pyramid," and #14, "Maat, a Philosophy of Science.")

*"I don't think the ancient sages built the Great Pyramid to try to catalog all the proportions and calculations of astronomy, geometry, etc. I think the masters built the Great Pyramid to set up an internal harmony. It just so happens the calculations bringing about harmony and those laws lying behind the solar system are the same. So one can find interesting correlations till doomsday. But I doubt that they were 'put in there.' These relationships are present wherever harmony is achieved — including those within a harmonious individual."*

Jonathan has a point. As Bucky Fuller and other lights in the world reaffirm the Wisdom of the Ages: "One cannot know the 'whole' by its 'parts.' Just lay out the parts of a completely dismantled automobile within the village of an aboriginal tribe. Return there 5 years later. Would the natives have produced a reassembled car? It's extremely doubtful. Without some concept of the total 'thoughtform' auto, its needs and function would never be known. The aborigines would more likely be found wearing the car's smaller parts as ornaments, or using them as instruments of cooking, tools, or weaponry, etc. This is one dilemma of the physical sciences today: working with too many units in search of the ultimate whole, without a conceptual idea of the whole in the beginning.

Dear Bill Cox,  
I recently put a small cardboard pyramid atop the cable television box resting above the set itself. The picture had developed into a chronic rollover, leaving me in despair and facing an expensive repair bill. For twenty four hours, I frequently had to pick the pyramid off up off the floor where it inevitably fell because the surface area on top of the TV wasn't wide enough so that the replica would stay in place. Finally, I gave up and removed the pyramid. Well now, the set has been cured and works just fine.

Betty Herrick, San Diego, California

Dear Bill,  
I obtained a schematic of a psionic transmitter from Al Fry, 879 Park Ave. Perris, Calif. 92370. This unit has many uses and is driven by a pyramid and/or thought energy. I constructed the instrument with an input well and vapor light for further experiment with fuel mileage. Cost was approximately \$25.00 powered with a one foot high aluminum pyramid.

I later set the unit on my 1966 Jeep Wagoner with the mileage gauge reading 92318. Results were as follows: Within a week a hydraulic valve lifter which had clattered extensively on every start ceased in its malfunction. The valve lifter will not have to be changed. The car runs like a top, and will in high gear, ascend Jackson Pass from the Idaho side at 30 to 40 miles an hour. The mileage on the car now reads 102,900. sincerely, Russ Smith, Chester, ID.

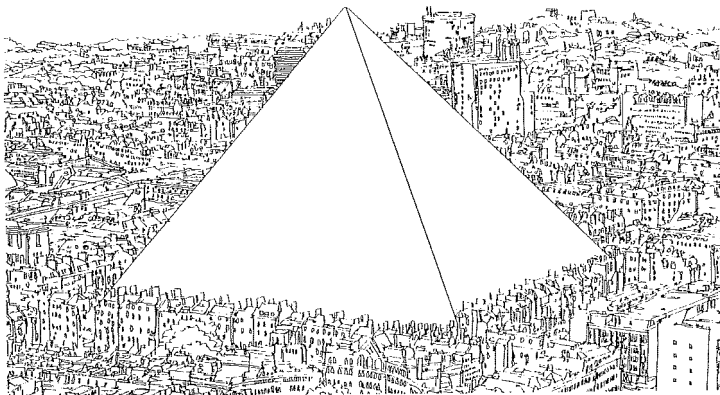
Dear Mr. Cox,  
The Pyramid Guide is just the sort of publication I've been looking for ever since I read 'Psychic Discoveries Behind the Iron Curtain. At that time, I built a four inch base diameter, right angle cone. It worked well in dehydrating marigolds. I was however, unsuccessful in detecting pyramid energy using a pendulum, a homemade Aurameter and several electronic detectors. I have since made a frame type meditation pyramid, and while I can feel the energy on my head or hand, I haven't noticed any improvement in my meditations. I'm still searching for an effective detector that can be made at home and useful for one who hasn't yet developed sufficient sensitivity with the pendulum.

very truly yours, James T. Sadler, Sarasota, Florida.

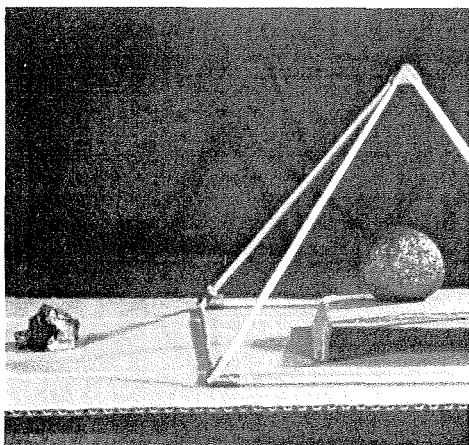
Dear Bill,  
On the back of the February '77 issue of the Pyramid Guide, you have a SAKRAS of Pyramid Terrace. This looks exactly like the Bengali, three dimensional, Shree Yantra. Shree Yantra is the symbol of Divine Mother and indicates a complex flow of energies within the body which corresponds to a similar flow in the Universe. sincerely yours, Rt. Rev. E.W. Plettner III, Sutton, Neb. ton, Nebraska.



WRITING HABITAT OF DION FORTUNE... well-known mystic; the authoress of at least fourteen occult books (Psychic Self Defense) and other magical works. The Cottage is located on a hillside overlooking the legendary town of Glastonbury, Somersetshire, England. (Photo by Bill Cox)



THE GREAT PYRAMID... Superimposed over a thirteen acre, square section of London, stimulating Atlantean memories, illustration reproduced with permission from New Age architect, Robert Armon's extraordinary sketches on The Geometry of Divinity. The caption reads "Never in the history of man has the great pyramid not been known." Plato. (Mr. Armon's address is: 1277 East Lincoln, Birmingham, Michigan 48008.)

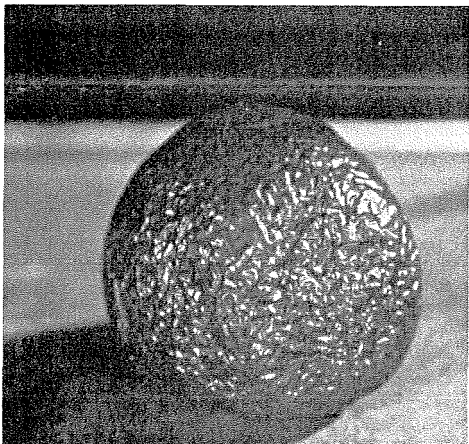


### A PYRAMID TOMATO TRANSMUTED

From the "JOURNAL OF OCCULT STUDIES" (see ad on page 7), we reprint photo and portions of an article describing a remarkable pyramid-tomato experiment. We say "remarkable," because the test was conducted under the most rigorous conditions over a three week period, before a "live" audience, by Sara Wye, anchorperson on the noon news of the Providence, Rhode Island, NBC television affiliate.

"Two large red tomatoes were chosen," the article goes on... "Both tomatoes were in the same state of ripeness, and virtually indistinguishable..." One tomato was placed on a two-inch high, cardboard stand inside the pyramid with one side of the pyramid oriented towards magnetic north.

The similar, control tomato left outside the pyramid... "went through a natural process of putrefaction. It changed color, collected mold, lost water and gave off a decaying smell. By the end of the experiment," the article added, "The control tomato was nearly disintegrated, but the experimental, pyramid tomato maintained its red color and showed no break in the skin." The pyramid tomato's skin did develop a slight wrinkling or tightening effect, but did not smell, was well preserved and somewhat mummified. By comparison, the control tomato's skin was completely broken open exposing a mushy, decayed interior.



**PYRAMID ON A PLAIN PULLS THE PENDULUM OFF VERTICAL...** The deflection of a plumb bob can be predicted when the density of the pyramid or other mass is known. British geodesist Sir George Everest, over a century ago, was astonished to find that the Himalaya, with peaks above 25,000 feet didn't draw the plumb bob toward the mountain range from the Indo-Gangetic plain in north India as anticipated. The weighted line in fact, was attracted considerably less than supposed. Scientists later cleared up the mystery by explaining that the Himalaya was made up of less dense material than Everest's earlier calculations.

### SPHERES FALLING FROM SPACE

Meteorites are ponderable, but symmetrically, near-perfect steel balls falling from the sky remains among the class of imponderables.

The 'fortean' mystery spheres, found from time-to-time throughout the world seem to show mutual characteristics... 1. The ball produces magnetic and/or radioactive phenomena, and 2. occasionally one appears to have a mind of its own, that is, rolling about and changing directions or starting and stopping, as though directed by some intelligence. 3. They range in size, from eight to eighteen inches in diameter, and 4. are made of iron or unknown metals. 5. Footprints or other physical evidence has been lacking, suggesting that someone dropped the object at a particular site.

In the summer of 1972, a 16 inch diameter, 13 1/4 pound metal ball fell, burying itself 6 inches into the hard ground of a field near Ashburton, New Zealand. The walls of the two-part, carefully joined hollow sphere was a half-inch thick. Metallurgists haven't been able to identify the metal. The ball had a 6" x 3" gaping hole in its surface, as though ripped by explosives, or burned open by high degree friction while speeding through the earth's atmosphere. The Royal New Zealand Air Force was called in to investigate and that is the last anyone has heard of the matter.

Then on March 27, 1974, Terry Matthews of Ft. Lauderdale, Florida discovered an amazing metal, seamless, stainless steel sphere lying in the middle of a field on Ft. George Island, owned by Antoine Betz. The object weighed 21 3/4 pounds.

The ball, labeled the 'Betz space sphere' by writers, is proportionally equivalent to the earth's diameter 7,926 miles, the sphere being 7.96" in diameter. Its circumference tallies 24.99" corresponding to earth's circumference of 24,868 miles. The strange magnetically charged ball attracts metal objects and voluntarily rolls uphill, but won't roll off the edge of a smooth surface. On one occasion the sphere rolled continuously for approximately twelve minutes. A 1/8" deep, triangular indentation scores its outer surface. The hollow sphere's magnetic features also include a north and south pole and it may have two others, all distributed an even 90° apart. The object's magnetic properties vary in the manner of pyramid replicas. The orb is remarkably sensitive to musical tones, actually giving out a humming sound in sympathetic vibration as it resonates to the sound of a tuning fork or a carefully plucked guitar string.

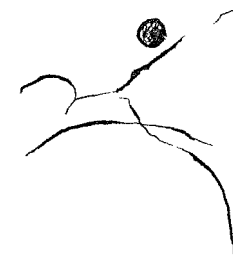
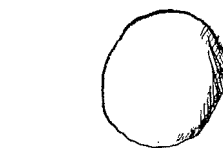
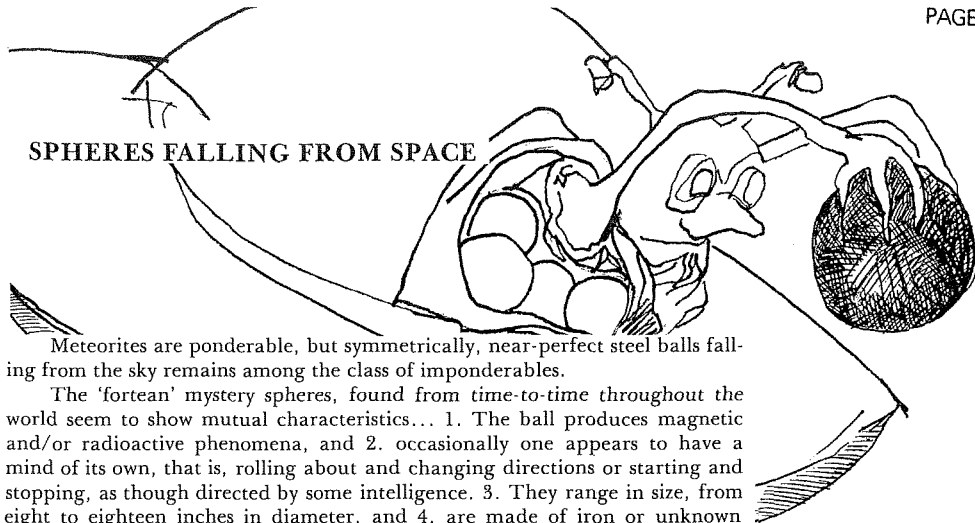
X-rays reveal three moveable 1/8" diameter balls and an irregular shaped, fourth object free-rolling inside. Their function hasn't yet been determined anymore than the origin and purpose of the sphere housing them. Was it a UFO?

Finally, on January 10th, 1977, William McCarthy, of Wakefield, New Hampshire discovered a 16" to 18" hole in the ice covering the 150 foot long pond of his rural horse farm.

Early reports claimed a high level of radioactivity was detected according to witnesses who said the object crashed into the icy pond during the night. The mysterious black 'thing' — viewed by witnesses through the hole in the ice — apparently sank into the muddy bottom. McCarthy's frozen pond curiously turned slushy in five degree temperatures. Officials later called in, denied the presence of radioactivity.

Huge stone balls up to seven feet in diameter or more have been encountered by travelers in Central and South America. The incredible weight and precision workmanship in their making, coupled with their actual purpose, as with metal space spheres, remains a complete enigma. "We know little about these things despite our great technological advances and software computer sciences," say researchers familiar with the spheres. Did ancient visitors from space leave a little of their 'hardware' around?

In 1897, a newspaper reported that a spaceship crashed near Aurora, Texas. "The pilot was 'not of this world' and was presumably buried in the Aurora cemetery," the article added. A metal fragment found at the scene has been examined by a North Texas State physics professor. His analysis shows the metal content is 75% iron, and unlike iron, it is shiny and soft, and peculiarly non-magnetic. A ninety-one year old resident of Aurora still remembers the incident. An interested group suggested they would like to have the space-man's body exhumed for further verification.





**PYRAMID "T" SHIRTS, Right-On...Short sleeve in black at \$5.00. Also write for free information on PYRAMID VIBRO-ENERGIZER. This new unit amplifies 50x the energy of our pyramid sleeping systems at \$9.95. Pyramid Systems International, Inc., 822 Nestle Ave., Reseda, Ca. 91335. Phone (213) 999-6190.**

finest spiritual and scientific information in the psychic field.

**THE Psychic Observer** and **CHIMES**  
\$9.50 (12 issues)

Canada and Foreign - \$12.00

MAKE CHECK PAYABLE TO **ESPRESS, Inc.**

Box 8606, Washington, D.C. 20011



**PYRAMIDOLOGY BOOKS AND LATEST ITEMS.** Send 25c for brochure — Great Pyramid Cheops Publications, 5406 14th Ave., Hyattsville, Md 20782

"PYRAMID RESEARCH GUIDE," a compact booklet for the pyramid builder. Gives accurate side/base measurements to build ANY SIZE pyramid with the cheops ratio! \$1.25 plus 25c U.S. postage or 95c foreign postage to Deane M. Stanton, 7131 E. Arbor Ave., Mesa, Arizona 85208.

**LEAD CRYSTAL** pendants, jewelry, beautifully faceted and of unique design: star-form spheres, cubes and many other geometric shapes. For catalogue and information, write to: **CHRYSALIS CRYSTALS**, 225 E. Carrillo St. Suite #201, Santa Barbara, Ca. 93101. Phone (805) 962-9496.

**JOURNAL OF OCCULT STUDIES**, quarterly, Howard Smuckler, Editor, an interdisciplinary approach to Paranormal Phenomena. \$2.50 per copy. Subscription \$7.50 yearly. University of Rhode Island, Division of University Extension, Promedade and Gaspee Streets, Providence, R.I. 02908

Who art thou, O great mountain? before Ze-rub-ba-bel *thou shalt become* a plain: and he shall bring forth the headstone thereof with shoutings, crying, grace unto it. *Zechariah 4-7.*

**PLEASE NOTE: PRICES AS ADVERTISED SUBJECT TO CHANGE WITHOUT NOTICE.**

#### PYRAMIDS!



**Building a large backyard pyramid? DO IT RIGHT!**

Build it for maximum energy, combine Cheops with a special lamination process for the skin. Create an antenna to refocus cosmic or etheric light. Send for blueprints—\$20.00—or information to:

**DEAN E. HARDY**  
R. 5 (Dumont Lake), Allegan, MI 49010

**SOURCES OF UNIVERSAL ENERGIES**, book available \$6.95. *Effects of Magnetism on Life* \$8.96. Send \$2.00 for collected articles and magnetic products list. Sue, Box 43, Stratford, N.J. 08084.

**STONEHENGE VIEWPOINT**, Quarterly, covering megalithic sites, ley lines, astroarchaeology, Druids, ancient wisdom, geomancy. 8 issues — \$4.00. "Stonehenge Viewpoint" P.O. Box 30887, Santa Barbara, California 93105.

**THE 'WILFLEY' CERAMIC PYRAMIDS**...approximately 12" x 12" base, are designs in 14-karat gold, hand-painted and signed by artists...special limited edition. Includes attractive redwood base and furnished with text on pyramid power. Send \$49.95 or \$19.95 for ceramic glazed pyramid. Order from **PYRAMID INNERGY, INC.**, P.O. Box 4755, Department 3-A, Columbus, Ohio 43202.

#### DIVINING RODS

LOCATING WATER WELLS

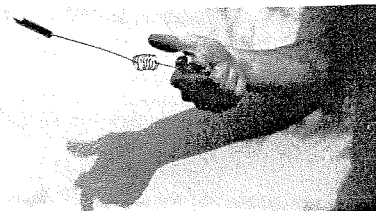
Tallulah Falls, Georgia 30573

Phone 965-6922

A. L. Leitzinger

**THE ORIGINAL CAMERON AURAMETER**...world's most sensitive Dowsing instrument...twenty years in its development, and an effective experimental Dowsing device. The AURAMETER is lifetime guaranteed against defects, workmanship assured...Over 4,500 in use throughout the world today. The AURAMETER is a combination Water Compass, Weighing Device and Upright Pendulum. Nickel Plated \$49.50, Copper Plated \$60.00 — Postage Paid.

**DOWSING HANDBOOKS, MAP DOWSING and OIL LOCATING**, Cameron and Cox at \$2.75 each, a unique, functional Dowsing approach at a distance. **AQUAVIDEO**, Locating Underground Water, in soft cover, Cameron and Cox at \$6.95. One of the most comprehensive, step-by-step, fully illustrated Dowsing methods ever written. Order above from Life Understanding Foundation, P.O. Box 30305, Santa Barbara, CA 93105 free descriptive brochures.



Please Note: The Pyramid Guide, El Cariso Publications, the owner and Editorial Staff, does not accept responsibility for statements made on the quality of product or service offered by advertisers.

#### "EXPERIMENTS WITH TIME"

A CASSETTE RECORDING\*\*\* with information from an **EXTRATERRESTRIAL TEACHER** that explains in detail experiments that you can make to **TRANSCEND TIME** and be free to enter either the past or the future and know what is there.

Excerpt from tape: "Time is relative, and one can alter it or shift within it. Time is given to man for his use and he can master it. It is not to master him forever. Time should be understood as a means of measurement and no more, it is not a prison. It controls certain functions of man, but man is free within time, if he knows the keys to freedom."

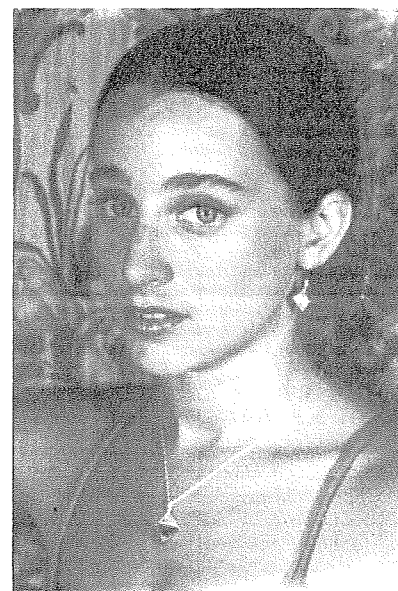
Send check or money order for \$7.50 plus \$1.00 postage and handling (Calif. residents add 6% sales tax) to: **EXTRATERRESTRIAL RECORDINGS**, Box 38320-P, Hollywood, CA 90038

**PHOTO CHROMO-THERAPY**, Betty Finch, S.C. \$2.00. Colors, Chakras and their Powers. Order from **PYRAMID GUIDE**, P.O. Box 30305, Santa Barbara, California 93105.

#### PYRAMIDOLOGY

For a listing of over 25 Pyramid Related Books and more than 30 Pyramid Products please send 2 stamps to:

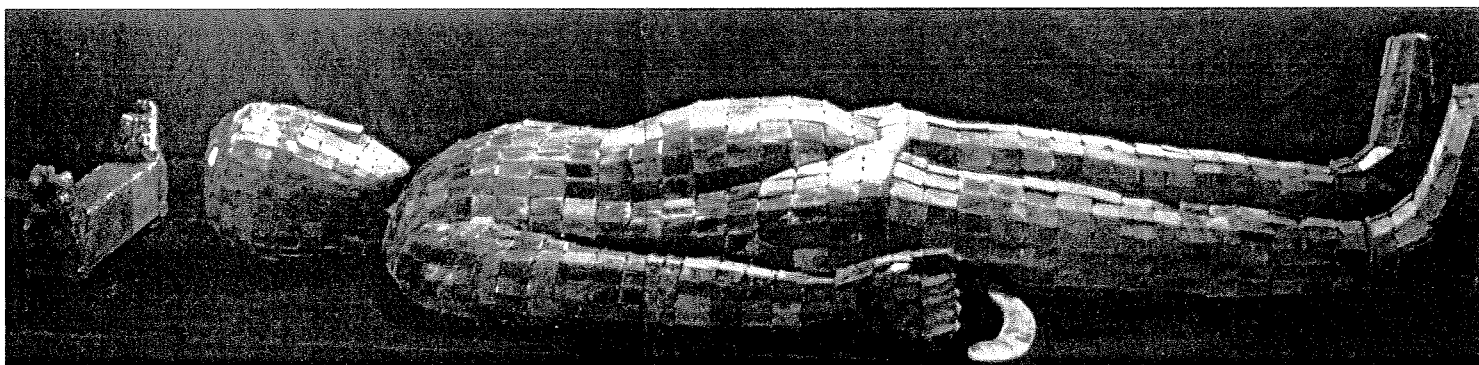
**PYRAMIDS**  
8143 - PG Big Bend  
St. Louis, Mo. 63119



"THE QUINTESSENCE OF JEWELRY" Just what you have been waiting for! A small pyramid necklace-earring set. Sterling silver with 18" chain \$20.00 (For men: necklace with 24" chain \$16.00.) Exact replica of the Great Pyramid with symbols: the Ankh, the Eye of Horus, the Staff, the Urn. Pyramid size 5/8" x 5/8" (necklace, 3/8" x 3/8" (earrings). Send M.O./check: Ashton Co., Box 303, Glen Ellen, Ca. 95442, © Justine Ashton 1977. 10 day \$ back guarantee. Add .50c for insurance. Send for free catalog.

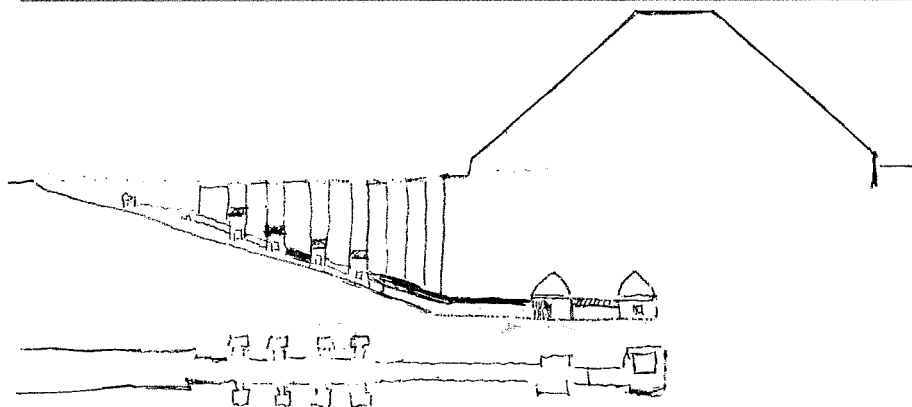
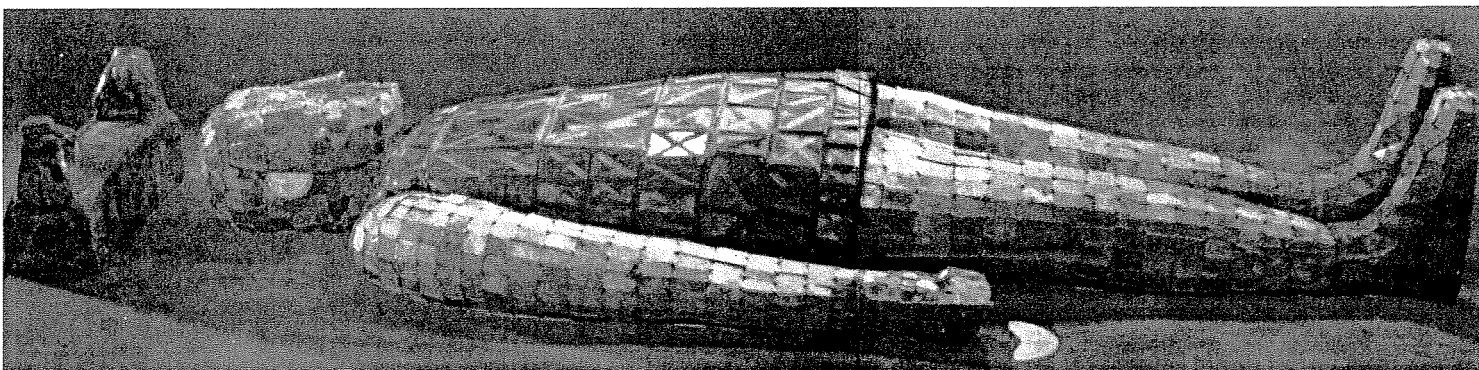
**BACK ISSUES OF THE PYRAMID GUIDE NEWSLETTER**...in any combination or series... \$1.00 each.

Life Understanding Foundation, P.O. Box 30305, Santa Barbara, CA 93105



THE JADE PRINCE LIU SHENG, OF THE WESTERN HAN DYNASTY...was entombed in 113 B.C. with his wife, Tou Wan, in the rocky cliffs of Kingshan mountain east of Mancheng, Hopei province, China. Archeologists gained access by penetrating the entrance stone-by-stone and dynamiting the molten iron gate. The adjacent burial vaults were literally underground palaces — Liu Sheng's four-chamber tomb, overall is 52 x 37 x 7 meters in size. The prince and his wife were interred with a style and extravagance previously unknown to Chinese archeologists who excavated the site in 1968. Liu Sheng's continuous pattern, 2,690 piece, jade suit was skillfully tied together with 1110 grams of finely woven gold thread. His 6 foot 2 inch long burial garment — and more particularly the mask, shows striking similarities to the mysterious jade trappings found in excavations, north and south of central America; most notably the mask of the high priest in the pyramidal tomb 'Palenque,' at Chiapas, Mexico.

CHINESE PRINCESS TOU WAN, LYING IN STATE, ALSO ENVELOPED IN A JADE (MUMMY) CASE...Tou Wan's four apartment sepulcher along with Lin Sheng's tomb gave up over 2,800 items including pottery vessels, funeral objects, ornaments, furniture, carts, and even horses. It was calculated that an expert jadesmith worked ten years to make the sewn, jade wafers, drilled and tied at the four corners with the gold threads to make the mosaic apparel and masks. An ancient connection between the Asian and American continents before Columbus is in evidence due to recent archeological finds of this nature. Although the jade mask has been considered solely a funerary object by some archeologists, authorities generally agree that no single mask of jade or clay yet found, positively indicates their true meaning. Liu Sheng and Tou Wan were found holding a jade crescent in their right hand, and their head rested on a jade pillow. (See 'The Priest of Palenque' in this edition of the 'Guide.)



#### PYRAMID TOMB IN CH'EN-HSIEN, SHENSI CHINA...

The illustration shows a section along the main axis of the princess Yung T'ai's burial chamber constructed A.D. 705, and finally excavated in 1964. The regal maiden reputedly fell into the disfavor of a jealous mother-in-law who ordered the younger woman's execution. Recognition, though too late to save the Princess' life, finally prevailed where the elaborate pyramid burial apartment provided a worthy memorial. The husband of Yung T'ai was also entered in the truncated pyramid monument, described as 24 meters high from top to base of the two apartment tomb. The descending passageway is characteristic of those found in Egyptian tombs and in some respects comparable to conduits of entry encountered in the great pyramid.

**LIFE UNDERSTANDING FOUNDATION**  
741 ROSARITA LANE  
SANTA BARBARA, CALIF. 93105

Non-Profit Org.  
U.S. Postage  
PAID  
Santa Barbara, CA  
Permit No. 404

