

THE LYCEUM BANNER

No. 450. Vol. XXXVIII.

AUGUST, 1928.

PRICE TWOPENCE



Miss E. Elliott (President, B.S.L.U.), who will be the Conductor of the Lyceum Model Session during the International Spiritualist Congress.

The International Spiritualists' Federation.

THE I.S.F. CONGRESS.

The International Spiritualist Federation are holding the Triennial Congress on September 8th—13th, 1928. A large number of Overseas Delegates are expected to attend.

A brief explanation of the meetings, etc., that led up to the formation of the I.S.F. may be interesting to readers of the LYCEUM BANNER.

International gatherings were held in Brussels, 1884, Paris 1889, London 1898, Paris 1900, Brussels 1910, Liverpool 1912, Geneva 1913, London 1922, Liège 1923, Paris, 1925.

The First Congress where a definite attempt at International organisation was made was at Brussels in 1910, when the Universal Spiritualist Congress, as it was called, decided to meet every three years. Various rules of procedure were adopted, and confirmed at a second Congress in Geneva during 1913. A half-yearly Bulletin was issued by the Chevalier de St. Marcq.

The principles on which the Congresses were founded were:—

1. Spiritualism is a movement of ideas born of public phenomena by which are shown the intelligent influences analogous to those which are found in the origin of the traditional mysteries of all religions.
2. The providential and humanitarian mission of Spiritualism is for blind faith to be substituted by a breadth of thought in the free examination of the subject by experiment, observation and experience.
3. Spiritualism has thus for its work the enlightening of religious history and the rational study of the mysteries which are at the base of all the religions.

The Great War prevented any possibility of further International Congresses taking place till in 1919 overtures were made by Great Britain to revive the Triennial Congress. The Chevalier de St. Marcq was chiefly responsible for retaining the only tangible link between the nations by the issue of the Bulletin.

A revival of the Congress took place in London during 1923, and a start was made by a meeting of delegates from a number of nations.

It was decided to refound the unity of International Spiritualism by the formation of the present International Spiritualist Federation. The first Congress under the new auspices was held at Liège during August, 1923. A further Congress was held in Paris during September, 1925. The triennial period was adopted for holding Congresses and the General Committee (two delegates from each affiliated country) meet yearly to transact the business of the I.S.F. An Emergency Executive has been appointed and is composed of the officers and two members, chosen from and by the General Committee.

The principles adopted by the I.S.F. are:—

Spiritualism is a philosophy based upon scientific and precise data, whose fundamental principles are thus formulated:

1. The existence of God as Intelligence and Supreme Cause of all things.
2. Existence of the Spirit related (during terrestrial life to the physical perishable body) by an intermediate entity called PERISPIRIT—a fluidic body of indestructible nature.
3. Universal Responsibility—both individual and collective—between all beings.

The sentiments expressed during the 1925 Congress denoted the strength of the foundation of the I.S.F. It now remains for succeeding Congresses to keep alive the spirit of unity and International progress. An extract from the final speech of the Vice-President, Mons. Jean Meyer, gave expression to these desires.

"May our labours as pioneers continue the international character . . . we have duties which can only be accomplished through practical solidarity . . . let all who are able to spare something from their superfluity remember that the finest use of wealth is to employ it in good works. . . . The International Spiritualist Federation is founded. Let us encompass this force with our help and entire devotion. . . . Posterity will say we have deserved the gratitude of future generations."



We now face the approaching 1928 I.S.F. Congress. A number of interesting papers have been prepared. The B.S.L.U. are giving a Model Lyceum Session, so that Overseas Delegates may see our methods of education.

Sir A. C. Doyle, Dr. Abraham Wallace, S.N.U. and B.S.L.U. Officers are among the British Delegates.

The S.N.U. and the whole of the Spiritualist organisations in London are co-operating for the success of the Congress.

Any donations to the Congress Funds or enquiries may be sent to the Secretary for the Congress, Mr. G. F. Berry, Broadway Chambers, 162, London Road, Manchester.

BLACKPOOL NATIONAL SPIRITUALIST CHURCH, ALBERT ROAD, BLACKPOOL

REVISED ORDER OF SUNDAY SERVICES.

10-30 a.m. Public Circle. 2-0 p.m. Lyceum.

3-0 p.m. Liberty Group. 6-30 p.m. Church Service.

Visitors will be cordially welcomed.

A Tour Round London.

LONDON LYCEUMISTS WELCOME THE I. C. F. CONGRESS

A BRIEF GUIDE TO THE CHIEF PLACES OF INTEREST.

Arranged by MR. A. E. FRUIN (President of the London Lyceum District Council).

The Delegates attending the International Spiritualist Congress during the early part of September will probably desire to see a few of the principal sights of the city. In the short space of time delegates will have to spare very few of London's celebrated spots can be visited.

We are indebted to Mr. Fruin for the loan of the views of London and record our appreciation this opportunity gives of displaying some of London's historic buildings. G. F. KNOTT.

GREETINGS.

Having been requested by the Editor to write a few details of London for the assistance of our Oversea visitors and Spiritualists who are attending the International Spiritualist Congress from various centres, I would first extend, on behalf of the London Lyceum District Council of the British Spiritualists' Lyceum Union, their FRATERNAL GREETINGS.

In these two words are conveyed the deepest sincere wish of Londoners attached to the various branches of the Lyceum Movement; there are 32 Lyceums, with over 1,000 members, in the London District and area.



The world at large is realising to-day the need of the spirit of co-operation in International Brotherhood. A spirit which will link us together in such strong ties of affection that all wars and rumours of wars shall cease and Brotherhood shall reign supreme. Therefore, in extending this Fraternal Welcome, we give the expression of our first two principles:

"The Fatherhood of God."
"The Brotherhood of Man."

In recognising these principles we are all children of the source of all wisdom, Light and Love: "God."

Let the material dividing lines of distance, whether sea or land, have no effects in preventing the spirit of true co-operation and comradeship between us. It is only natural, and rightly so too, that we all feel proud of our own particular Nationality or District, but in meeting together for such a noble ideal, "The Spiritual Education of Mankind," and especially that of the child, we can well afford to forget sect, clan and nation, and stand shoulder to shoulder for the upliftment of humanity.

With these expressions I repeat the words: "Fraternal Welcome to all."

LONDON.

London, as the greatest city in the world, is naturally one full of interesting associations and interest to visitors. In the space at my disposal it will be appreciated that I can only give a very brief account of its leading attractions.

Firstly, a few hints may serve a useful purpose to those who are desirous of seeing its many sights.

Undoubtedly the quickest way of travel is the Underground Railway System, but by this means you miss seeing much of interest along the way.

To see London, if your desired destination is beyond walking distance, you will find the numerous 'Bus Routes are the best mode of travel for the sightseer.

The best friend to give information is a London Policeman, whom you will always find willing to assist you. He is far safer to rely on than the casual man in the street. To many, the traffic of our City will appear to be a maze, and two words of warning should prove helpful. One is, only attempt to cross the street where you find a refuge in the centre. The other is,

to remember that in several parts of the City *one way traffic* has been adopted, and a sharp look-out is needed before stepping off the pavements. Should any of our Overseas friends be driving motor cars during their visit they will be well advised to study the difference in the RULES OF THE ROAD from their motor guide handbook.

HOW TO SEE LONDON.

To those who are good walkers I propose to give you a tour through London; one which I usually take myself when showing visitors round.

In order to make it as plain and simple as possible I will give you a starting point at Hyde Park Corner. Facing towards the City turn off into Constitutional Hill and to Buckingham Palace, the London residence of the King and Queen of England. If the family is in residence it will be noted by the Royal Standard flying over the Palace. Opposite the Palace you will see a beautiful statue of the late Queen Victoria.

You now take the road opposite the Palace, namely, Pall Mall, have the Green Park on your left, and St. James' Park on the right.

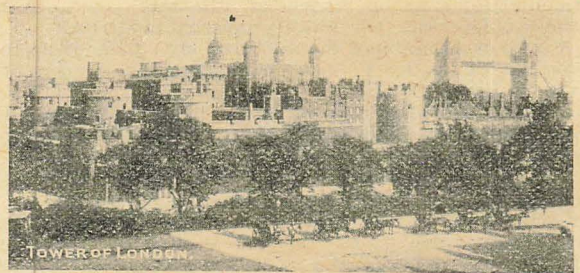
By turning into the first road on the left hand side for a few steps you will see Marlborough House, where Queen Alexandra lived; also St. James' Palace and York House, where the Prince of Wales has apartments.

Returning to Pall Mall you continue your journey until you come to some steps and a large Monument. These are called the "Duke of York Steps." Here you take the road directly opposite, and this will bring you on to the Horse Guards Parade. You will see the Parade Ground is surrounded by many statues. Towering in front of you are large Government Buildings. You will now cross the Parade Ground, but instead of going through the Archway, go up the steps at the far corner, you will then be in Downing Street, where prominent members of the British Cabinet reside. The residence of the Prime Minister of England is No. 10. At the end of this road turn to the right, which brings you face to face with the Cenotaph, the simple, yet honoured memorial for those who passed to the spirit world during the Great War.

Just in front of you now are the Houses of Parliament, Westminster Abbey and St. Margaret's Chapel. On the left is the renowned Scotland Yard.

You should enter the Abbey, but, if your time is short, I would advise you not to attempt to see all its sections, or your journey will end here.

Leaving the Abbey, retrace your steps towards the Cenotaph, which is in Whitehall, and walk to the top of the road, where you will find yourself in Trafalgar Square. Facing you is the National Gallery, while in the forefront you have Nelson's Monument, and on the right is St. Martin's Church, well-known to wireless enthusiasts. Just beyond this is Nurse Cavell's Memorial.



You should now go round the back of St. Martin's Church, and this will bring you out into the Strand, facing Charing Cross Station, where you will see the last of the Eleanor Crosses, which were erected by King Edward I., in 1291, to mark the resting places of her funeral procession from Nottinghamshire to Westminster. Here I would suggest you get on a 'bus going to St. Paul's Cathedral.

Along the journey you will pass a Church in the centre of the road, which is St. Mary-le-Strand. On the right Australia House, Bush House, and the Law Courts. In the centre of the road, at the end of the Law Courts, is a Monument on the site where Temple Bar stood. Having passed this, you have left the City of Westminster and entered the City of London, and are in Fleet Street, which is known as the "Newspaper World of London." As you come to the cross roads, namely, Ludgate Circus, St. Paul's Cathedral will face you. Just before reaching it, in a turning on the left is the Old Bailey. Having spent

a few minutes in the Cathedral, you can walk up Cheapside, and this will bring you to the Guildhall, Mansion House, Bank of England and the Royal Exchange.

For those who wish to still continue their journey The Monument and the Tower are two places of interest near by.

As I stated, space has not permitted me to give you dates and details of each of these points of interest, but such can be found in all Guide Books of London. The foregoing is simply what I have found a pleasant half-day tour.

If you have time to spare many of these places are well worth a separate visit.



VISITS TO SPECIAL ATTRACTIONS.

Apart from places mentioned herein a few general remarks may be useful.

To lady visitors who desire to see the shopping centres, Oxford Street, Tottenham Court Road, and Regent's Street will hold attractions.

Lovers of Museums will find all they need in the South Kensington district.

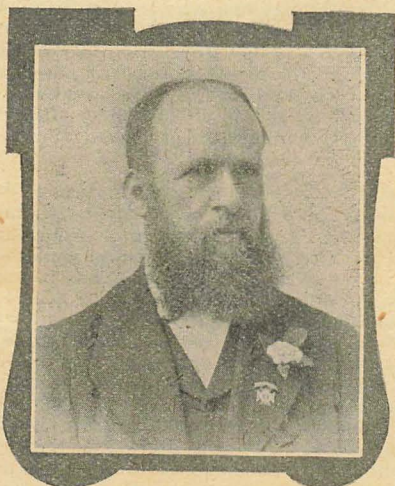
Early risers will find the markets interesting, namely, Billingsgate Fish Market, Covent Garden for Flowers and Vegetables, Smithfields for meat.

Visitors staying in London should certainly not miss visiting Hampton Court, also Kew Gardens, and the Zoo.

The last item of interest is a word about the lights of London. London by night is a blaze of light and life and to see this you should visit Theatreland (Piccadilly, Leicester Square, and Shaftesbury Avenue). Here you will be amazed at the wonders of electricity by thousands of dazzling signs; it is a sight which should not be missed.

I have said nothing about Educational Institutions, the Docks, the Sports Grounds, and many other items of importance. I have but touched a few of the main points of interest, and can only trust that no visitors find themselves at the Lost Property Office, Soctland Yard, in trying to follow these directions.

A. E. FRUIN.



Mr. Alfred Kitson, General Secretary of the B.S.L.U., 1890—1919. Adviser to the B.S.L.U. from 1919 onwards. Father of the British Lyceum Movement. The photo is a reprint from the Souvenir issued in 1910 which was issued to celebrate the coming-of-age of the B.S.L.U.

British Spiritualists' Lyceum Union.

Office: 20, TOAD LANE, ROCHDALE, LANCs.

INTERNATIONAL SPIRITUALIST CONGRESS.

The B.S.L.U. Management Committee, with the assistance of the London Lyceum District Council, will hold a

MODEL LYCEUM SESSION

in London, on SUNDAY, SEPT. 9TH, 1928,
at 2.45 p.m.

(The Hall in which the Session will take place will be announced later).

ADMISSION BY TICKET.

Tickets will be circulated to the Districts (pro rata) on application to the General Secretary. An early application for Tickets is requested.

LYCEUM MANUAL KNOWLEDGE TESTS.

Mr. McFarlane is gratified with the number of Lyceumists of all ages who have entered for the *Lyceum Manual Knowledge Test*, No 2.

The prizes have been awarded to:—

Mrs. Lillie George (Daulby Hall Lyceum), Liverpool, and Doris Clayburn, aged 13, of Stacksteads, nr. Bacup, who each had 30 correct results.

High commendation is given to Mr. Fruin, 29; Miss Rawlinson, 26; Miss Firth, 25, and John Hayward 25. (Portsmouth scholars were debarred from competing, as they had already had the competition in parts before publication)

The correct answers were:—

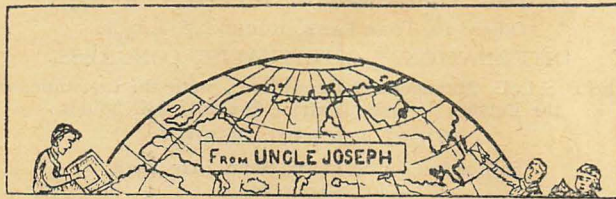
- | | | |
|-------------|------------------|--------------------|
| 1. Bonar. | 13. Parker. | 25. Kidder. |
| 2. Dyer. | 14. Bliss. | 26. Haweis. |
| 3. Tyler. | 15. Tucker. | 27. Ball. |
| 4. Kersey. | 16. Wheeler. | 28. Howe. |
| 5. Pollard. | 17. Mason. | 29. Adams. |
| 6. Goodwin. | 18. Train. | 30. Burleigh. |
| 7. Doughty. | 19. Oliver. | 31. Fitch. |
| 8. A. Pope. | 20. Fletcher. | 32. Norman Macleod |
| 9. Swain. | 21. Bristol. | 33. Cobb. |
| 10. Butts. | 22. Peebles. | 34. Cook. |
| 11. King. | 23. Young. | 35. Burton. |
| 12. Doten. | 24. 'Lighthouse' | 36. Richardson. |

THE THIRD TEST.

Mr. McFarlane offers two prizes for the best solutions, one prize for juniors under 14 years and one prize for Lyceumists over 14 years. Solutions must be sent not later than August 18th to Mr. J. G. McFarlane, 6, St. Piran's Avenue, Copnor, Portsmouth.

Give the number and title of the chain, reading, or song which the following represent:—

- | | | |
|---|---|-----------------------|
| 1. Life | 6. 3 p.m. | 12. NEVER G4E-ward. |
| 2. George V. Konk. Edward VII. Konk. | 7. 12 + 34 + 56 = 100. | 13. Life. Death the |
| 3. Birthdays. | 8. We shake hands with. | 14. Evening Star. |
| 4. Enob. | 9. G | |
| 5. Morning, noon, and | 10. E Thou art. | 15. 50 0 5E. |
| | 11. L S D Oh fat. | 16. Recurring. |
| | 11. Trumpet phenomena. | 17. Advance. |
| 18. June 30. | July 31. | August 31. |
| 19. G....1
O....3
D....2. | | |
| 20. R not | John Evans }
Will Evans }
Tom Evans } | Born June 19th, 1928. |
| 21. Income Expenses | £1896.
£1764. | |
| | £132. to be retained. | |
| 22. Mr. Spain, Mrs. Spain, Master Spain, Miss Spain. Mr. and Mrs. France, Miss and Master France. | | |



OVERSEAS.

We print below a number of essays from children in Johannesburg Lyceum.

There has not yet been a big response to the invitation for Overseas greetings and messages. But we have faith that, as soon as the page becomes more widely known, it will be appreciated and we shall be able to print more extensively from a wider area.

We are grateful to Mr. Hart for sending the Johannesburg essays, and hope the children will appreciate the printing of their efforts.

Miss E. A. wants a Canadian correspondent. The letter has gone to Canada, so we hope E. A. will be having an answer to her letter soon.

SHORT ESSAYS BY JOHANNESBURG LYCEUMISTS.

CATCH THE SUNSHINE.

(Dorothy).

We should always be out in the sunshine because it makes us happy and keeps us healthy, therefore we should also send out loving thoughts of kindness and keep others from evil.

(Eddie).

God gave us sunshine to make us happy. We should always be out in the sunshine whenever we can. When we are disheartened don't go inside and say "I'm sad"—go out into the sunshine and you will find you will soon be happy again. Think of some poor children who cannot play about in the nice sunshine, whereas some children who can romp about stay in some stuffy room most of the day.



(Alma) Age 9.

We must always catch the sunshine because it will bring us joy. If there was no sunshine everything would die, for the sun gives us heat and light. If there were no heat all the earth would be cold, and if there was no light the earth would be dark. We must never give up and say "I am sad," but we must remember the sunshine because it always seems happy.

(Olive).

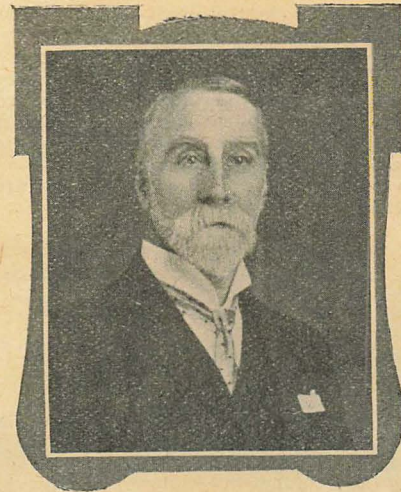
We all know that this world is full of sin and sorrow, therefore we should try to make it brighter and happier by being kind to each other and by doing our duty which God gave us to do, therefore we should try to fulfil his will.

(Lily).

Catch the sunshine whenever it is possible—never let it pass on. Some people do not like the sun—they say it is too hot when it shines, but when it rains they wish the sun was shining. Some people are never satisfied with any weather, but when you think of other countries, the South African climate is the best. Some people are satisfied with any weather—other people are never satisfied with any weather. When sick people are sitting in the sun they feel happy.

(Harry).

Catching the sunshine is not the easiest thing in the world, but still why not choose to be happy rather than sad. If one is sad or heartbroken let him remember there is yet a brighter day. Don't be always looking on the dark and gloomy side of things—the sun is always sure to come out—it is there to warm



Mr. H. A. Kersey, the original publisher of the "Lyceum Manual" and "Spiritual Songster." Mr. Kersey donated the copyrights of these two books to the B. S. L. U.

the earth and if you will take its lesson it will also warm your heart and teach you to look on the bright side, and not on the dark. All life is made up of difficulties which are given us to strengthen our character—without them we would grow flabby. Life's sorrows in the same way are given us that we can appreciate our joys the better. This is the lesson of the sunbeam pointing out that even in the darkest hours and greatest storms he is there behind the clouds waiting to give us comfort and light. Let us take one of the Scouts' laws. A Scout smiles and whistles under all difficulties, therefore why not let us follow in their steps and do likewise.

(Marion).

You must always be ready to do good or anything that is worth doing, but you must not be too hasty because in your hurry you may do something that is not right; then you must not say "Oh, there's plenty of time, I needn't be in any hurry," because when you come to do it you may be too late. Take all the chances you can get to do good. If you have something to do to-day, do it—don't leave it till to-morrow, for it will be of no use. Be ready to do all that you can, prepare yourself for all tasks that you may have to do, and in all that you do try to do your best to do it well. Take all the help you can get from your friends, and it may help you through life; and remember that whilst you are doing good you are helping others. Although your life may seem a little harder, it will soon change and you will feel like helping more and more people, and you will think it very nice to work to do good, for in the end you will find you have done your part and it will make you feel brighter and happier, and in the Summerland it will be more beautiful still.

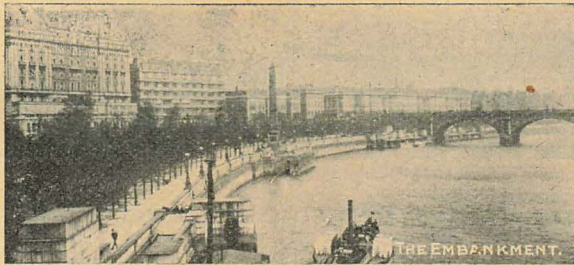
(Billie).

The sunshine is needed to make things grow. If it were not for the sunshine there would be no plant life, no animal life and no human life. Just as the sunshine brings forth the beautiful flowers and trees, so the love of God makes us happy and joyful. If we try to catch the sunshine and be happy we shall make others happy too. Thus, by helping others in this way, we shall make it easier for ourselves to progress on the other side in the Summerland. Sometimes the sunshine is hidden by a cloud, the flowers droop their heads, and the birds cease to sing. Just the same happens when troubles are upon us and we think God has forgotten to give us our share of his love from his great storehouse. Don't give up and say "forsaken." Don't begin to say "I'm sad." Just as the sunshine comes out from behind the clouds and makes the little birds sing and the flowers to lift up their heads, so God's love will come to us and make us cheerful in our troubles. We must try and give out as much love as possible to everyone. We must help others in times of distress and teach them the great Truth. If we do this we shall be well prepared for our life in the eternal Summerland.

(Florence).

Everybody in the world loves the sun. The flowers, birds, beasts, insects and people. We would not be able to live if

there was not any sun to shine down on us and make the beautiful world light. If it were dark the flowers and trees would wither and die and all the rest of the living things would shrivel up for the want of its light. So now we know why our loving Father made the sun. He meant His children to have the benefit of its light, warmth and glory. Now when we talk of catching the sunshine in spiritual language, we mean we must catch all the good things we can even if they are the smallest. When God calls us to rest with Him and we go to the Summerland, He is our sun and He shines over us all, but before He calls us He wants us to catch all the good things in this world and help anybody who is in trouble. Then, when we have finished our good work here He will call us and we may rest with Him in peace and bask in the sunshine of the heavenly Father's love.



Ruby):

Catch the sunshine of the love of angels that surrounds us all on this earth, driving away the darkness and mistakes of the past which has caused us to believe in gloom and mistaking the true love of God and keeping away the knowledge from us of those who guide our steps and lead us where the sunshine will be forever, according to our life while in our earthly body. Catch the sunshine through all our lives by working to help others to understand the beautiful teachings we are getting in our Lyceum, so that when boys and girls see our example they will receive joy where before it was dark and stormy. That great joy will come to us all at last by doing our duty here. Every day we can make gleams of sunshine for someone if we only try, for the sunshine of angelic love brightens the darkest minds, causes light to shine over our doubt and fears, so that we can see the danger of doing wrong ahead and avoid or prepare ourselves by catching the sunshine of the Father's love, for angels hover o'er us if we live our lives as we are taught by our teachers in the Lyceum, until our work on earth is over, and when we reach the shining shores of our homes in the spiritland, the sunshine of God's love will be over us all for evermore.

THE NATIONAL SPIRITUALIST COLLEGE.

The National Spiritualist College was founded in July, 1926, and is recognised by The Spiritualists' National Union, Ltd., and The British Spiritualists' Lyceum Union, as "an Educational Institution legally established as a Body within the Orbit of the Unions and an Integral part of its Activities."

The College is being conducted in close co-operation with the National Education Scheme; the College Governing Board being also the Joint Education Committee. But there is no confusion of duty or function. The function of the Joint Committee is to carry on the Advanced Education Scheme and conduct the Grade Examinations (through the S.N.U. Education Committee—which forms a section of the College Board); and the function of the Governing Board is to organise and supervise and encourage the Educational and Class work carried on by the Churches and Lyceums, operating as Local Branches of the College.

The COLLEGE Constitution was adopted by both Unions in 1926; the Local Branch Constitution has since been drawn up as a Guide to all legitimate activities, and also to enable Churches and Lyceums to organise themselves as Units of the College. Where any question has arisen as to the application of any article or articles, the Emergency Committee of the College Board has given Interpretations which will be found appended to the Constitution affected. Hints and suggestions on organisation, etc., for Local Branch officials and members, and Interpretations of Advanced Education Scheme Regulations which may be of service to students and tutors, have also been included in the College Booklet.

It is hoped that all eligible Churches and Lyceums will adopt it as an item of normal policy to join the College and

establish Local Branch activities in vigorous operation—and that those not yet eligible will set up Education Committees on lines similar to those laid down for Branch Committees, and make active membership of the College their educational objective. In ensuring the success of the College they will be raising the status of the Organised Movement, and thus bringing honour to themselves as members of such a Movement and as pioneers in its educational and progressive efforts.

There is one thing we must remember. The long threatened attack on our position has begun, with the usual accompaniment of misrepresentation and abuse. Our reply to that is not to rush into print to defend our Cause—which is in no need of apology—but to set to work and build up an educated Movement, every member of which will be able to defend his or her belief both scientifically and philosophically. To do this all must study, and it is the duty of all who are zealous educationists to work without ceasing in our individual Districts as missionaries of educational Spiritualism until the absolute necessity of study is realised—and acted upon—by every Body attached to the S.N.U. and B.S.L.U. And when this great work has been accomplished we may rest assured that the Spirit Organisers of our Movement will open up new vistas of progress and give us new opportunities of working for the mental and spiritual advancement of mankind. But we need not waste time looking forward and wondering what tasks the future will bring forth. Let us do the duty that lies nearest us; our next duty will then have become clearer. So will our Movement be raised to the position it was destined to occupy, and so shall each of us be able to say that we have done our utmost to help in the accomplishment of its destiny.

GENERAL REMARKS AND CONSIDERATIONS.

It is in the provision of halls and (if necessary) speakers, and in the helpful supervision of Branch activities, that our District Councils—acting as DISTRICT CENTRES—could render invaluable aid to the cause of Spiritualism. One of the weaknesses of the Spiritualist Movement is the attraction it has for cranks and faddists—each crank being convinced that without his particular fad Spiritualism is and will remain incomplete; and to the District Centres will fall the task of saving the College from these cranks, who never seem to realise that being appointed to a position of trust imposes on them the obligation to "play the game" with those who appointed them. To this end, all Courses of Lectures must be approved by the District Centre (with of course, the right of appeal to the Governing Board), to ensure that only subjects on the Syllabus shall be taught. The approval by the Board of District arrangements will be necessary as a part of national organisation, so that the Governing Board shall have full knowledge and control of all the activities carried on in the name of the College, which must strive to be in fact, as well as in name, a National Body.

It will have to be left to the District Councils to decide how they will organise themselves to carry out the duties of District Centres. Each will have to decide for itself in accordance with the nature and extent of its District. For instance, North East Lancs., Scotland and Tyneside would develop an organisation different from that of London or Manchester. In some Districts a strong Central Committee—in others a small Central nucleus, with power to co-opt from the Branches—would seem to be the obvious machinery. The main consideration would be the existence of an advisory, supervisory District Body to direct, advise and encourage the Local Bodies. The planning of courses of lectures would be regarded as being (for the present at any rate) of secondary importance, and done at first through the agency of the Branches—until these latter became firmly established, and their work to be regarded as a normal part of Church and Lyceum activities.

For further particulars of the College apply to Mr. A. T. Connor, 4, Palmerston Road, London E.7



THE LYCEUM BANNER:

OFFICIAL ORGAN OF THE BRITISH SPIRITUALISTS' LYCEUM UNION.

EDITOR: G. F. KNOTT, D.N.U.

Terms to Lyceums and Societies:

The *Lyceum Banner* is supplied at 1/9 per dozen copies (18/12) up to four dozen. Additional half dozens may be ordered. All orders for four dozen copies and upwards are supplied at 1s. 8d. per dozen. All parcels sent post free. Accounts due quarterly: March, June, September and December. Single copies, 2½d. post free.

Send your Orders not later than the 23rd of each month.

Annual subscription, post free, 2s. 6d. To Canada and the United States, 60c. Foreign currency taken.

Money and postal orders should be made payable at Wardleworth post office.

Office: 20, Toad Lane, Rochdale, Lancs., England.

Office hours: Monday, Wednesday, Thursday, Friday, 8-30 a.m. to 6-0 p.m.; Tuesday and Saturday, 8-30 a.m. to 12 noon. Callers by appointment.

AUGUST, 1928.

AN I.S.F. CONGRESS "BANNER."

This issue of the *Lyceum Banner* has been made an International number to celebrate the International Spiritualist Congress which will be held in London during Sept. 8th-13th.

We are indebted to Mr. A. E. Fruin for the loan of blocks to illustrate some of the chief buildings in London. He has also written a short guide around the principal places that will be of interest to visitors to the metropolis who may have half-a-day to spare for sight-seeing. We record our appreciation of these services.

The outstanding Lyceum feature during the Congress will be the Model Session. The M.C. of the B.S.L.U. have recently visited London and witnessed the Annual Demonstration, under the auspices of the London Lyceum District Council. After such an exhibition our Union can feel assured that the British methods of Lyceum education will be faithfully and worthily portrayed by the Lyceumists who will take active part in the Lyceum session during the Congress.

There will be a large contingent from U.S.A. and delegates from many other countries, including far-away Japan.

The basic principles of the I.S.F. have been declared and the time is ripe now for a study of methods and evidences, with an interchange of policy and practice. The Sunday School system has never attained the same popularity overseas as it has done in England. This latter country has special facilities of interworking through its small mileage and the nearness of various towns. The seasons, too, are more settled and suitable to indoor work than in other countries. Nevertheless these is much scope abroad for more opportunities being given to children for co-education. We hope there may be some adaptation of Lyceum methods in other countries. The universality of moral teachings and spirit-guidance need greater encouragement to draw the family of nations closer together. If such events occur as a result of the Model Session, the desires of the B.S.L.U. will have been fulfilled.

The International Federations and Unions definitely affiliated to the International Spiritualist Federation by subscription are:—

SOUTH AFRICA.—Spiritualist Union of South Africa.

GERMANY.—Wahrer Weg.

GREAT BRITAIN.—Spiritualists' National Union.

British Spiritualists' Lyceum Union.

ARGENTINE.—Confederacion Espritista Argentina.

BELGIUM.—Union Spirite Belge.

BRAZIL.—Federaçao Espirita Brasileira.

COSTA RICA.—Claros de Luna.

CUBA.—Sociedad Espirita de Cuba.

SPAIN.—Caridad y Libertad.

FRANCE.—Union Spirite Française.

GUATEMALA.—Luz del Porvenir.

HOLLAND.—Harmonia.

INDIA.—Indian Spiritualistic Society.

MEXICO.—Fédération Spirite Mexicaine.

PUERTO RICO.—Federación de Los Espritistas de Puerto Rico.

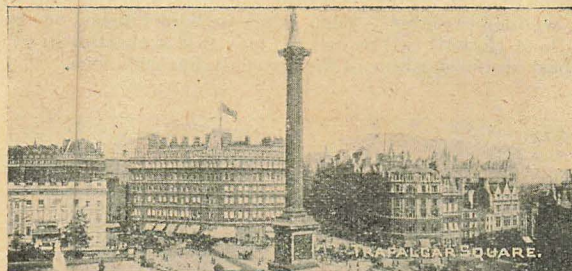
SWITZERLAND.—Société d'Etudes Psychiques.

There will be representatives of other countries present at the I.S.F. Congress and presumably there will be additions to the official roll of financial members of the I.S.F.

There will be an Exposition held in an adjacent room during the Congress where items of Spiritualistic interest will be on view.

Exhibits for the Exposition should be sent to Miss M. Phillimore, 16, Queensbury Place, South Kensington, London, S.W.7.

The Congress Secretary is Mr. G. F. Berry, Broadway Chambers, 162, London Road, Manchester.



THE MANAGEMENT COMMITTEE IN LONDON

The Management Committee of the B.S.L.U. held the Quarterly business and propaganda Meetings in London on July 14th and 15th.

The business meeting was held in the South London Mission Church at Peckham, where the M.C. were the guests of the L.L.D.C. and Peckham Lyceum.

Miss Elliott, the re-elected President, signed the Presidential Roll, and was in the Chair.

The Minutes and correspondence were passed. Pleasure was expressed with the details of the visit.

The Treasurer's report showed the need for economy and financial support to the Union.

The balance in hand was £151 14s. 10d. but there are some payments for which the accounts are not to hand. Certificate deposits were £15 11s. 6d. £2,000 Effort, £545 15s. 7d. Lyceum Home Fund, £174 2s. 4d. Conference Income £49 10s. 9d. Expenses £62 8s. 8d. S.N.U. Fund of Benevolence, £1 13s. 4d.

The sales were slightly below the previous year.

Some of the publications were reduced in price: the particulars are given elsewhere in this issue of the *Banner*.

It was decided to repeat the purpose of the £2,000 in the *Banner*.

Arrangements were made for the Lyceum Model Session which is being held in London during the I.S.F. Congress during September.

It was decided to apply for credentials for 16 delegates to attend the I.S.F. Congress, on behalf of the B.S.L.U. Four tickets will be allocated to the Representative on the Grand Committee and the three official representatives. Miss E. Elliott, Mr. G. A. Mack, and Mr. A. Kitson were appointed to officially represent the Union. The remaining 12 credentials will be circulated to the Lyceums in the various districts, on the condition that such delegates do not charge their expenses to the Union, and agree to vote as the official delegates direct. Application for such credentials should be made to the General Secretary as soon as possible.

It was decided that the admission to the Model Lyceum Session on Sept. 9th, during the I.S.F. Congress, should be by ticket, owing to the limited space. The tickets will be circulated to the districts pro rata on application to the General Secretary and under the direction of the President.

A standing vote of sympathy was recorded to the relatives of arisen workers in the Movement: Coun. J. Pimblott, J.P., Virgil R. Vlasek, and Mr. Wrigley.

The *Banner* sales showed a decrease of 300 copies per month. It was noted that Lyceums should continue their support and sale of the *Banner*.

It was reported that the amended S.N.U. Memorandum and Articles of Association had been accepted and would be confirmed at a later meeting on July 27th.

Keighley and Congleton Lyceums were accepted into membership with the Union.

The Committees for 1928-29 were appointed, and representatives chosen for various subsidiary bodies.

Mrs. M. E. Pickles was re-appointed to the position as General Workers Representative on the Arbitration Board.

Mr. Burrows was re-appointed Hon. Secretary to the £2,000 Effort.

Various small corrections were made in the compilation of the official 1928 Conference Minutes, which were drawn from the report of the Conference in the July *Banner*.

The next meeting will be held at Maskell Street Church, Manchester, on October 13th and 14th, 1928.

A hearty vote of thanks was given to the London L.D.C. and Peckham Church and Lyceum for the nice arrangements for the M.C. visit.

At the conclusion of the business Mr. Fruin welcomed the M.C. to London and Miss Elliott and other responded.



*The Lyceum
Motto
is
"THE
WORKERS
WIN."*

DEMONSTRATION AND PROPAGANDA MEETING.

The M.C. visit was made to coincide with the L.L.D.C. Annual Demonstration in the Battersea Town Hall.

400 Lyceumists and about 100 visitors attended the Demonstration.

There was a splendid and pleasing harmony of disposition and colour in the assembly. Among those on the platform were the Officers of the Union and the Members of the M.C., Mr. Fruin (President, L.L.D.C.), Mr. Whitmarsh (President, L.D.C.), Mr. Stewart (Treasurer S.N.U.), Mr. A. T. Connor (College Secretary), Mr. Hawkins (President, Marylebone S.A.), and Mr. Myers Clegg (Lyceum Pioneer).

The whole of the programme was admirable.

Mr. Fruin introduced the prominent members to the assembly.

Mr. Clegg gave the invocation.

Cousin Doris recited a Welcome and a bevy of small children presented button-hole flowers to the members on the platform.

A lovely bag (made by a Lyceumist) was presented to Miss Elliott, with love from London. The President accepted the gift with real pleasure and said it was an encouragement to go on and try further to be an example to those who follow; and her words were echoed by those present.

Mr. Fruin then handed the Session over to Miss Elliott.

Mr. Mack read the Silver Chain Recitation. The Musical Readings were read by Mr. Stewart, Miss Rayner, and Mr. Conner.

Pearls and greetings were given by Battersea, Brixton, Bowes Park, Clapham, Eltham, Forest Hill, Fulham, Hackney, Lewisham, Kingston, North London, Peckham, Plaistow, Stratford, Southend, Surbiton, Tottenham, Walthamstow Progressive, Woolwich & Plumstead.

Mr. Dix, of Fulham, conducted the Marching and Callisthenics, and Mr. Pearson and the Band from Fulham Lyceum provided the music.

In the Annual Competitions the winners of the Medals were:

- Junior Singing.—1st. May Ratcliffe (Battersea).
2nd. Cyril Godfrey (Tottenham).
Junior Elocution.—1st. Lily Chipling (Hackney).
2nd. Audrey Cox (Bowes Park).
Senior Singing.—1st. Herbert Tiffin (Clapham).
2nd. Elsie Kobly (Bowes Park).
Senior Elocution.—1st. Margaret Ella (Fulham).
2nd. Winnie Pollard (Eltham).

Essay Competition. Subject: "What the Lyceum is to me."

Girls.—Ivy Holloway (Tottenham).

Boys.—Ronald Edmonds (Fulham).

The Medals were presented by Mr. Kitson. The four 1st Medallists rendered the Competition pieces as Individual efforts for the Session.

The Silver Bell was presented by "Uncle Bert" to Tottenham Lyceum for the second time in succession. Their total of marks obtained was 88.6 (possible 100).

PROPAGANDA MEETING.

Miss Elliott presided at the evening meeting in the Lesser Town Hall. The platform was again filled with prominent workers, among whom was Mr. Bolton (L.D.C. Secretary).

Miss Elliott introduced the people on the platform and stated no matter how hard the work, it is the workers who win. If we keep that in mind we shall win every time. She spoke of the roses of life and the love that links us together, and finally appealed for harmony to reign in our midst.

Mr. Slimin spoke of inter-relations, and defined our interests as one in eternal life. He was applauded for the numerous epigrams in his speech.

Mr. Kitson gave praise to the London Lyceum District Council and said the M.C. could be satisfied that the personnel of the Model Session during the I.S.F. Congress was in good hands.

Mr. Knott spoke of a few changes in science, religion and philosophy through the advent of Spiritualism.

Miss Tiffin rendered two delightful solos.

Mr. Fruin gave thanks to all who had supported the week-end and shown the people from the North what they could do in the South.

Mr. Burrows, in turn, said it was for the M.C. to give their appreciation to all who had done so much to make everything so successful.

Mr. Williams gave his greetings and, as Treasurer, said he would appreciate a good collection.

The whole week-end was happily successful and it was a real pleasure to feel the progress and unity which is being pursued in London and District.



A SOUVENIR AND THE I.S.F. LYCEUM SESSION.

The M.C. of the B.S.L.U. are printing a Souvenir of the Lyceum Model Session which is being held in London on Sept. 9th, at 2-4.5 p.m. The London Lyceum District Council are providing the Lyceumists who will take part in the Model Session. It is the intention of the M.C. that the Overseas Delegates may witness the methods of education usually adopted in an ordinary Lyceum Session and numbers have had to be limited. Only the appointed Lyceumists will take part in the Model Session. Other Lyceumists will occupy ordinary seats in the Hall.

The space in the Hall will be limited, so it has been necessary to admit the assembly who will witness the Model Session by TICKETS. The tickets will be allocated, as space permits, to the Districts, Lyceums, and Lyceumists who make application to the General Secretary, B.S.L.U., 20, Toad Lane, Rochdale, Lanes.

The Souvenirs will be on sale at 6d. each (7d. post free), and will contain the full programme of the Session in English and French. Orders can be sent to the General Secretary and the Souvenirs will be sent as soon as a supply comes to hand.

It is expected the Model Session will be held in the Battersea Town Hall.

Lyceum, Visitor's, and District Council Reports are held over till the next issue, owing to the insertion of the Lyceum Lists.

REDUCTION IN PRICES.

MODERN SPIRITUALISM.

By W. H. EVANS.

Published price 3s., reduced price to Lyceums 1s. 9d. per copy, 18s. per dozen (13-12) post free.

Modern Spiritualism is just the right book to hand to your friends when they enquire "What is Spiritualism?"

All the Services of Songs

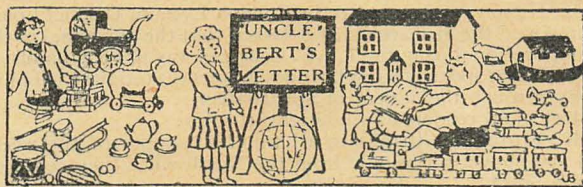
"NETTY," "INTO THE LIGHT," "THE WARNING VOICE," "SUMMERLAND,"

are reduced to 3d. per copy, 2s. per dozen (13/12) post free.

GEMS OF THE LYCEUM.

Reduced to 2d. per copy, post free.

"Gems of the Lyceum" is a medley of *Spiritual Songster* tunes arranged to provide music for the first series of Callisthenics.



MY DEAR BOYS AND GIRLS,

England this month might well be termed "A great Playground of Youth."

One little girl has already told me she has broken up, while Cousin Doris informed me, a few days ago, that she was broke.

Such terms as these may be very misleading to some of our Overseas visitors who we all look forward to greeting next month.

It does not denote that our English boys and girls are divided into little pieces, like when you drop a cup or plate. It means they are having a holiday from school for a period of about one month.

The second statement is one which may not be classed as good English, but has a very far-reaching meaning behind it, for it suggests that one's financial circumstances have come to an end.

In most cases, however, at this period of the year you boys and girls can rank yourselves along with the millionaires, you have been saving (or, at least, I hope so) your pocket money in order that you can have a real good time this month—visiting ice cream stalls, sweet shops, taking your donkey ride along the sands, with as much importance as though you were prancing along Rotten Row amongst the leading people of our country.

It may be necessary for you to form a sinking fund after the holiday, but we must not cross bridges until we come to them.

I expect some of you will say your funds have already sunk, but a sinking fund is one in which you have to save money, so that it gains interest to enable you to pay off your debts.

Fancy me suggesting you will need to borrow money during the holidays.

Why, of course, you will not; you are all too jolly artful in getting the right side of mother and dad, and by stroking them the right way you'll get it given to you.

I heard of a very little boy who was going for his holidays. He went up to his Granny and said, "My purse is in a queer state." "Why! What's the matter with it?" asked Granny. The reply speaks for itself: "It's empty."

I hope you will not run away with the idea that I am suggesting things. All the same it might be worth trying, so I'll leave it to you.

As you will notice, this month's BANNER is a special issue, referring quite a lot to our Overseas visitors. I suggested to Uncle Joseph that he should take all prominence this month, for he is our Overseas Uncle and has done some real good work in bringing you into closer relationship with the children of other nations. He thought it would be better if we both made reference to this special feature. I do not know what he is going to say, so if I should say the same thing you'll understand.

The lesson I propose to give you this month is how you can all assist to bring about a wide-world Peace. I hope I shall be able to put it in such simple language that you will all see what an important part you boys and girls can play.

Firstly, I take it you have all been told about the "International Spiritualists' Federation," and what it is for. You

know what a Spiritualist is. The word International refers to relationship between nations. Federation means Unity. So if we put these three words round another way they will explain themselves, without my going into a long detailed account. "Spiritualists of all nations meeting together to study Spiritualism": the teachings of which stand for Peace, Love and Harmony. The point which is most important to the Lyceum Section is that they are going to attend a Model Lyceum Session in London. They will then go back to their various countries and, we hope, start Lyceums.

I cannot tell you how many nations will be represented, but Germany, Belgium, Brazil, Cuba, Spain, America, France, Holland, Mexico, Switzerland and Great Britain are amongst the most likely ones.

So you see at a glance what a wonderful thing it will be if the Lyceum Movement can be extended to all these countries.

What is the lesson for you, seeing that only a limited number will be able to attend from each Lyceum to take part in the Model Session? It is to create the spirit of love and kindness to all nations. In your history books at school you read of wars between various countries. At times you are tempted to think unkindly, because you cannot agree with the methods which were adopted by the different races in days gone by.

The idea I want you all to get into your minds when you are reading such reports is that these accounts are but past history. The future is ours to do better.

If we desire, as I am sure we all do, that our fathers and brothers and sisters too, never have to go to war again, we must learn the lessons contained in the *Lyceum Manual*. Here we are taught to love all nations, because we are all children of one great universal Father—God.

Furthermore, while you are on holidays this month, you are sure to meet people from other countries; here you have a fine opportunity of showing what real Lyceumists are, by being just as thoughtful and kind towards them as you would be to those of your own country. If you do this in your own simple way you will be doing your little bit to bring about a world-wide Peace.

There is another way, too. I know it is very tempting to you, boys especially, to play soldiers and to pretend to kill each other. I did it when I was a boy, but I have grown to dislike such games. I hope you will too.

Then you can all extend this spirit even further still. When you have your little squabbles at school and you are tempted to fight with each other, and doing so it is only causing a little war, and will not agree with the teachings of our *Manual*.

I think you will see now that all these good people are coming to England to study Spiritualism. Many of them will be the fathers and mothers of boys and girls like yourself. We are all going to show them a real spirit of Love and Brotherhood, so that when they return they will be able to tell their children what a happy time they have had in England.

I will now let you into a secret without telling you too much. While you are on holidays, Auntie Ruth, Cousin Doris and I will be visiting several Lancashire coast and inland towns. We are not taking any special meetings, but we hope to visit some of the Lyceums, and we shall keep a sharp look out for the Lyceum Badges, and hope, if you see us, you will make yourself known.

ANSWERS TO LAST MONTH'S PUZZLES.

101. Neither. It was not raining.
102. Mrs. Rose, Portsmouth, sent reply with 40 words starting with the letter E.
103. Lyceum Song 310.

ANSWERS RECEIVED FROM

Edith Taylor, Edith White, Ernest, Florence and Leslie Morris, Joe Walsh, Rosalyn Berry, Gladys Hopewell, Josephine Howarth, Mrs. Robinson, Norah and Christina Dwyer, Mrs. Rose, Miss Guy, Mrs. Lea, Betty Lea, Miss V. Rose, Miss Hayward, Reuben Grice.

THIS MONTH'S PUZZLES.

- No. 104. For *Manual* Searchers.
Sour, Light, Failure, Dull, Darken, Peace, Empty, Starved, Ignorance.

Change the words so as to give each word its opposite meaning, e.g., "Light into Dark," and tell me the Musical Reading in which to find them.

- No. 105. Towns of other Nations. What and where are they?

AAVILCNE. MHSIER. LSOGOTR.
TTRROEAMD. MSKHOOLC. NIRLEB.
UREECNL. NISNOSIW.

No. 106. A suitable motto for the I.S.F.
U D W . S . . . D, D D . E F . . L

TO THE LIBERTY SECTION.

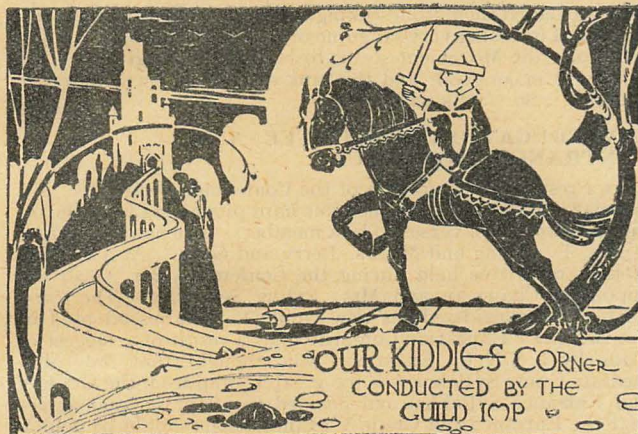
As you will see, I have endeavoured to give the children a lesson on the Love for all Nations. How far can we older members extend this fraternal spirit of co-operation? It must start in the individual, finding its way through Church and Lyceum until it becomes an international reality.

With love,

Your loving friend,

2, Villiers Road,
Osterley, Middlesex.

UNCLE BERT.



DEAR FELLOW IMPS,

Last month I spoke about poems; this month I want you to help me in two other directions. First, some members *address* their letters to me, care of Miss Kitson—which is quite right; but they also *start* their letters "Dear Miss Kitson," which is quite wrong. You are not writing to Miss Kitson, but to me. So, as I know you do not want to make me jealous of Our Guild Leader, I shall expect you in future to begin with "Dear Brother Imp" or "Dear Verontas." Secondly, some of my contributors (that is a big word, isn't it—and it only means the Lyceumists who send me things) send me essays or stories copied out of a book, or stories that have been told to them at school. These are all very good and helpful; but they don't agree with the spirit of Our Corner, that it should be run by the Kiddies, and so I am unable to use them on this Page, although they count as efforts. What I want the Editor to be able to say is that this Kiddies' Corner is full of stories and other items written by the children themselves. Understand? Good, then.

OUR CONUNDRUMS.

The missing words in Herbert's Verse-puzzle in last month's Corner are: *tares, re-sat, rates and stare*.

Frank writes correcting the total cost of the horse-shoeing job to £279,620 5s. 4d.; but that is not exactly correct—in fact, cannot be correct. Can Frank, or some other Cornerite, point out why the total *cannot* be correct as Frank gives it? All have another try.

Irene Hacking, a new Sister Imp of Darwen, asks the following:—

(a) What has eyes, but cannot see? (b) What has legs, but cannot walk? (c) Flies high, flies low, wears boots and has none. What is it?

TWO CONUNDRUMS FOR VERONTAS.

Renie Camm this month, and Evelyn Ainsworth last month, have set me a pretty conundrum—to guess what street they live in from being told the name of their town or the Lyceum they attend. Evelyn only gives Fleetwood, and Renie gives Hawarden Lyceum. I have tried to find a solution by sending their Certificates to their Lyceum Secretaries, and I hope that these friends will not mind the liberty.

The other is: What are our members to do when they arrive at being 12 years old? The only answer I can think of is "Don't." There is no reason why members should not get over 12 years old and yet still remain Cornerites and send in efforts. If they do not think they are too old, I won't; and, to be quite honest, I don't care how old you are, if YOU still feel

young. So don't worry, just carry on, but don't admit your age to anyone. Just say, "I'm over 11," and that will cover you till you are over 100, and then you won't care who knows.

A VERY LUCKY BOY.

Walter E. Swift, of Accrington (Pearl Street) Lyceum, sends a bit of personal history which I think you would like all to read:

I am 11 years old and I have always attended my Lyceum ever since I could walk. I was named at China Street by Mr. Edwards. I have often read the Children's Corner and I have thought many a time that I would like to write a short letter to you. So this is my first attempt to write one, and I have enjoyed writing it very much, and I have been very slow, and besides I was very shaky when I was writing it. I have attended Pearl Street ever since the school was given up at China Street, and have had a prize ever since I was two years old, and I have them yet. Both of my sisters are in office. Our Hilda is the Secretary and my other sister is the Conductor; and my father is a Lyceumist. Your Dear Friend,

Walter is lucky in belonging to such a family of Lyceumists, and I hope he enjoys his sisters being able to order him about at the Lyceum as well as at home. Or perhaps they don't order him about? Lucky boy!!

TWO FROM CHESTERFIELD.

Frances Mary Hobster likes our new title design, and is going to send me a photo. of the crooked spire on the Parish Church. She lives about a quarter of an hour's walk from where George Stephenson used to live. "George Stephenson was the man who made the first railway engine, called *The Rocket*. In the house they have left his bedroom just as it was when he died. Only the gardeners and the housekeepers live there now. It is to be kept for a museum."

This is very interesting, and I'm sure many of you could tell us about famous people who used to live in your town or district. I'd be glad to get more letters like this, or like that from Fred Gore, who is only 8 years of age, but writes like a boy of twelve.

Fred goes to a school which is about 150 years old, and at which all his big brothers and sisters attended when young. He has good teachers, who treat him very well; but he wouldn't suit Little Red Riding Hood or some others of the Nursery-Land kiddies, for he doesn't like holidays! But he ends up with a wish that many Lyceum workers have expressed: "I am hoping to be at school for a long while," he says, "to learn all I can. But, above all, I like the Lyceum best, and I wish there was a Lyceum Day School."

OTHER HONORABLE MEMBERS.

Phyllis Glover (Pearl Street), aged 10, tells how she left the Church of England Sunday School after three visits to a Lyceum; Renie Camm tells of a concert; George and Eileen Entwistle (Darwen) tell about their pet kittens; Marion Wagstaffe (Chesterfield) tells of a race in which a vain boy was beaten by his sister and thus learned that it is not wise to brag about a thing before you have done it; Kathleen Hooper (Colne) sends three original verses, entitled "June"; Betty Calvert sends a story about self-sacrifice, entitled "Little Ruby Sacrifices her Christmas Gift," which is her own composition; and Doris Peet (Stockport Central) tells us the Adventures of a Penny. By the way, Betty belongs to Blackpool.

R. A. O. K.

The Rules for members of The Royal and Ancient Order of Kiddies will be found in the June BANNER, and will be reprinted next month.

Wishing you all a very happy holiday time, with plenty of experiences to tell each other.

Your loving Brother Imp,
VERONTAS.



The Education Department.

THE NATIONAL SPIRITUALIST COLLEGE.

(Under the auspices of the S.N.U. and B.S.L.U.)

ASSOCIATE (B.S.L.U.) SECTION

of the

NATIONAL JOINT EDUCATION COMMITTEE.

MOTHER HUBBARD'S DOG.

Those of you who read last month's page will know all about Mother Hubbard's dog, of course. (By the way, its name is Eddie—short for its full title, Education!). Well, Eddie has been fairly well provided with money for his necessary bones and biscuits since last month, and is hoping to fare as well this month; so that he won't have to do without his special ones.

Forty-six donations have come along, mostly from "Education" Lyceums, but a few from individual Lyceumists too; but as quite a number have asked to be "Anonymous," we have decided not to give a detailed list. The donations have ranged from a shilling to a pound, and now total £9 10s. 9d.

The money has been raised in various ways; some Lyceums have held a special collection and sent on the amount, others have had a levy on their past candidates, and some have sent a donation from their Funds.

Many quite poor Lyceums have yet spared a little, and each donation has brought with it a letter expressing realisation of the value of the Education Scheme, and good wishes for its future.

The interest, zeal, help, co-operation and loyal support shown by these letters give great encouragement, and hold out hopes for the continued success of the work for education and real progress.

We thank you all, and, in turn, wish you success and prosperity.

THE NATIONAL SPIRITUALIST COLLEGE.

EDUCATION NOTES AND NEWS.

By the COLLEGE SECRETARY.

HEFTY TWO-YEAR-OLDS.

The S.N.U. A.G.M. has come and gone, and with it the second anniversary of the birth of those healthy twins, the National College and the National Education Scheme—those two precursors of the fusion of common endeavour on progressive lines to which all sincere Spiritualists are looking forward. The twins have now overcome the phase of attempted opposition, they will survive the attempts at ridicule, and if they are strong enough to conquer the tendency towards taking-it-easy which is often the aftermath of resistance to opposition, there is no reason why they should not grow quickly to adult strength and usefulness.

The promises of growth and expansion are very encouraging. District Councils and District Groups; Churches and Lyceums; Speakers and other Platform Workers, and individual Spiritualists from all over the Union area, are making inquiries about our Education Scheme and its requirements, and Leaders of Study Groups are asking for information about Lesson Plans and methods of conducting preparatory classes. Registered College Local Branches are reporting on activities, such as the establishment of Libraries, some already with three or four hundred volumes on hand or guaranteed, and the formation of classes. And in some cases, where Education Scheme classes were not authorised by the Church, Study Guilds to cover the ground of the Scheme, and use the set text-books, have been sanctioned. In this direction we are hoping for a repetition of what happened at Newport (Mon.), where a Group that had been studying No. 3 Handbook suddenly decided to test the value of its work by entering for the Entrance Examination.

APPROVED PREPARATORY CLASSES.

Another class of inquiry that has become common is *re* correspondence tuition for the three examinations. And it would seem as if this promised a profitable field of activity for the founders of educational systems and/or centres. There is no reason why they should not draw up a course of lessons on the three Grades which could be taught by correspondence; nor why these courses should not be submitted to the College Governing Board for approval and the establishment that conducts them be allowed, on payment of a small annual fee, to register as an Approved School of the College. The College Constitution allows it to "receive into affiliation, or work in co-operation with, any other educational Spiritualist Body." I recommend the idea for consideration by the Principals of

these Centres, and will bring any suggestion they may offer before the Governing Board when it meets in September.

THE MOVEMENT AND THE TWINS.

The Conference listened with evident satisfaction to the report of our year's work and its results. One or two misguided humorists tried to raise a laugh against the use of the letters A.N.S.C. by College Associates (one being so shaken by indignation that the letters got badly mixed up while he was saying them), but the delegates, by refusing to join in the laugh, endorsed the College Secretary's protest that it was no laughing matter, as these Associates had each studied at least five years and had passed five examinations in Spiritualistic knowledge in order to qualify for the Degree. Many delegates asked privately for information which consideration of Conference time prevented them from seeking on the report, and the Governing Board is feeling very sanguine of next year's results. Taken all in all, the Movement seems to be inclined to give us a fair chance to make good, and the rank and file is decidedly sympathetic. So "all's well."

NEW EDUCATION COMMITTEE, AND "ENTRANCE" SYLLABUS.

As a result of the election of the Conference Committee, Mr. Thomas Oliver, who has done some hard pioneering work during the last two years, ceases to be a member. The new Committee is Mrs. E. Paling and Messrs. Berry and Gush. At a meeting of the Committee held during the Conference, Mr. Gush was appointed Chairman and Mrs. Paling Secretary. The Committee also considered the new Grade V Syllabus adopted by the B.S.L.U. Education Committee (as a result of a suggestion made by a S.N.U. Examiner, who thought that the Intermediate Grade Syllabus was too great a jump from the Grade V and Entrance Syllabus) and decided to adopt it; and agreed that the Entrance and Grade V examinations should be held at the same time as the B.S.L.U. examinations. The main result is that the students will now have to study the hints on investigation laid down in *Essays on Reasoning*, in addition to (and really in extension of) the subjects introduced in No. 3 Handbook; and there will be two Sessions and two papers instead of one as formerly.

The text-books set are No. 3 Handbook (price 7d.) and *Essays on Reasoning* (5d.)—both post free from Miss M. E. Kitson, 37, South Street, Savile Town, Dewsbury, Yorks.

The following particulars *re* the Entrance Examination should be carefully noted and preserved:

(1) The annual examination shall be held in February, on the same date, or dates, and at the same times, as the B.S.L.U. Grade V Examinations, and under the same Supervisors.

(2) The examination shall consist of two THREE-hour Sessions—

One at the same time as the local examination in the other Lyceum Grades, and

The other during the Saturday or Sunday or Monday of the Examinations Week-end, but

At a time and place to be decided according to local arrangements and/or possibilities.

(3) There shall be two Question-Papers, one at each Session: *Paper No. 1* shall be based as at present on No. 3 Handbook;

Paper No. 2 shall also be based on the subjects dealt with in the Handbook, but the answers must show an intelligent grasp of the methods of study and research and investigation laid down in the set chapters of *Essays on Reasoning*.

(4) The same Examiners shall mark both Grade V and Entrance Papers.

(5) Candidates who obtain 70 per cent. or more of the total marks shall be deemed to have qualified to enter for the following year's Intermediate Grade Examination—if still eligible in other ways.

FOR INFORMATION ABOUT THE SCHEMES:—

For information about the ASSOCIATE SECTION (i.e., Oral Grade to Grade V) apply to the Hon. Education Secretary (B.S.L.U.):—

Miss M. E. KITSON, B.A., F.N.S.C.,
37, South Street,
Savile Town,
Dewsbury (Yorks.)

For information about the NATIONAL SPIRITUALIST COLLEGE apply to the College Secretary and Secretary of the Joint Education Committee:—

Mr. A. T. CONNOR, F.N.S.C.,
4, Palmerston Road,
Forest Gate,
London, E. 7.

For information about the GRADUATE SECTION (i.e., the Advanced Courses) apply to the S.N.U. Education Secretary,

Mrs. E. PALING,

"Lucknow,"

Muriel Road,
Beeston, Notts.

N.B.—Please Note NEW Addresses.

Special Reports.

Under this heading, Lyceums whose reports exceed the words allowed in the Table as shown in Rule 3 may have them inserted in full by enclosing 6d. for every extra nine words.

BRADFORD, Laisterdyke.—June 3rd we had our Anniversary Services. The speaker for the day was Mr. Brewer, of Wakefield. He presented B.S.L.U. Examination Certificates, with encouraging remarks. Our Conductor, Mr. Leonard Wilfred, presided all day. We had the pleasure in the afternoon of having the Officers of the Bradford Lyceum District Council.

July 1st we had our Open Sessions. Morning Conductor, Mr. A. Wilman; Afternoon Conductor, Mr. L. Wilfred. Songs, duets, recitations, by Miss A. Hudson, Harold Batty, Miss M. Ackroyd, Mrs. Richard, Miss M. Luty, Miss E. Hunter, Miss E. Hurst, Miss M. Ashford, Miss P. Wilman, Harold Hill.—Mr. J. Babbs, Sec.

CALGARY, First.—On July 1st we held our 13th Anniversary with a good attendance to see the distribution of prizes. The first half of the service was conducted by Miss A. Garrad. One of our members of 10 years of age repeated the Principles of Spiritualism. This girl, Elsie Peters, has only been with the Lyceum just over one year. The Conductor Miss A. Garrad, thanked the members for supporting her during the time she has been in office. Then the Assistant Conductor, Mrs. Eshelby, took the remaining portion of the Session. Nearly all present gave pearls and the following gave readings:—Lorna Yoxall, Stella Wintle, Elsie Peters. Solos by Mrs. Garrad, Raymond Parkyn, Pianoforte solo by William A. Garrad. Elsie Peters contributed a recitation. Following a few words commending the work of the Conductor during the year, Mrs. Yoxall presented the prizes to children of the Lyceum who have all put in very good attendance this year. Lena Peters got the first prize for putting in the possible attendance. A few words of praise for the work of Miss A. Garrad in the Liberty Group were spoken by Mr. Inkpen. To make our Session a bit more enjoyable we had amongst us two old members of the Lyceum, Mr. and Mrs. Howe, from Los Angeles, U.S.A. After an enjoyable session we all departed home and are now having a vacation of two months from our Lyceum. Best luck to all Lyceums and the Banner.—W. A. Garrad, Sec.

DUNEDIN, New Zealand.—May has been a busy month. On the 13th we celebrated "Mothers' Day," when Freda Patricia Swift (14) and Frances Margaret Anthony (6) were dedicated to the Cause of Spiritualism, receiving the spirit names of "Leona" and "Heartsease" respectively. Freda was crowned with mauve and purple scabias, and her attendant maids presented her with mauve chrysanthemums tied with mauve ribbons. The wreath Frances wore was of deep yellow primroses and her maids gave her more primroses with yellow ribbon. A Lyceum badge was given to both. A large number of visitors were present, including Madam Inkpen-Hoggan, from Vancouver, who spoke for a short while to the children. A special Open Session was held. Pearls by all members and recitations by Frances Anthony, Freda Swift, Edith and Margaret Asher, Jean McConnell, Raymond Englefield, Roland and Hilda Paul, Dulcie Pratley and Joyce Ferguson. Pianoforte duet by Mr. Hargreaves and his daughter Joan.

May 27th we held the 5th Anniversary and Distribution of Prizes. Open Session was again held and pearls were well given by all. Recitations by most of the children and, with the exception of three recently enrolled, all were present. Mr. Hargreaves was (for the first time) absent from an anniversary, through sickness, and we missed him very much. Good work has been done during the year, and 14 new scholars enrolled, three of them during May.

Mrs. Stables, Vice-President of the Church, kindly came along and distributed the prizes. Fountain and Stream Group: 1st, Frances Anthony; 2nd, Hilda Paul; 3rd, Colin Bachop. A picture book to Kathleen Paul (2 years) and Noel Brooks (2½), and a rattle for the Lyceum Baby (9 months). River Group: 1st, Joan Hargreaves; 2nd, Esmé Morgan; 3rd, Roland Paul; 4th, Irene Bachop; 5th, Irene Brooks. Lake and Sea Group: 1st, Garnet Asher; 2nd, Raymond Englefield; 3rd, Joyce Ferguson; 4th, Kenneth Brookes. Ocean, Shore and

Beacon Group: 1st, Jean McConnell (highest marks in Lyceum); 2nd, Edith Asher; 3rd, Hazel Pratley; 4th, Mavis Dobbin; 5th, Kitty Dobbin; 6th, Dulcie Pratley. Star and Excelsior Group: 1st, Margaret Asher; 2nd, Lilian Bayliss; 3rd, Charley Bayliss; 4th, Freda Swift; 5th, Jean Sharp. Liberty Group: Mrs. McConnell, Mrs. Asher, Mr. Hargreaves, Mr. Baird, Mr. Englefield, Mrs. Englefield, Mrs. Paul and Mr. Gore.

Special prizes were offered by two friends for the best rendered pearls, and were won by: 1st, Jean McConnell (10 years), a Gold Badge; 2nd, Edith Asher (11), Silver Badge; Raymond Englefield (7), Silver Badge; Joyce Ferguson (8), Lyceum Badge.

A special prize was given by Mrs. Hope for the child bringing the greatest number of scholars during the year, Mavis Dobbin (9), Silver Badge.

Essays.

13 to 15, two entries: Margaret Asher (14).

9 to 12, seven entries: 1st, Edith Asher; 2nd, Jean McConnell.

6 to 8, seven entries: 1st, Garnet Asher; 2nd, Raymond Englefield.

Adults, five entries: 1st, Mrs. McConnell; 2nd, Mr. Englefield; highly commended, Mrs. Asher.

Mr. Baird, on behalf of the adults, presented Miss Burgess with a beautiful box of stationery and stamps, and a fancy handkerchief, as a token of appreciation of her work.

Margaret Asher gave the invocation and Lilian Bayliss the benediction. Both these girls during the last few weeks have prepared and conducted a session very capably.

On the 29th the Annual Lyceum Birthday Party was held, when 62 past and present scholars and friends sat down to a well-spread and prettily decorated table. Miss Burgess and her willing helpers had a busy time preparing the many good things which were quickly disposed of. A birthday cake, given by our old Lyceumist, Mr. Gore, with 5 candles, greatly pleased the little ones. The number was augmented during the evening with a few extra adults. Games, recitations, singing, etc., made the evening speed very quickly. After supper the lights were turned out and the children grouped upon the platform, and with tiny candlesticks and candles alight, sang a Good-Night song, and then the singing of "Auld Lang Syne" ended the happy evening.

Greetings to all Lyceumists and best wishes for the success of the BANNER.—Miss R. Burgess, Con.-Sec.

EAST HAMILTON, Canada.—We held our Open Session on June 24th. Mrs. Pickles was the Conductor. Piano solo by Miss C. Bird. Pearls were numerous. Recitation by Mrs. Speakman. We had a visitor from Toronto, Mrs. Fryer, and she spoke a few encouraging words to the Lyceumists. Mrs. Warrell gave a few messages. The attendance was very good.—H. Greaves, Sec.

JOHANNESBURG.—The attendance at the Lyceum is showing greater consistency than usual and the monthly Open Sessions are giving more pleasing results than have been experienced for some time.

On June 2nd the children gave a Concert which was well attended. The several parts taken by the children were well rendered. A further concert will be given at a later date.—E. A. Hart, Sec.

LONDON, North.—On June 3rd we held our 17th Anniversary. All services were well attended. 70 were present. We were pleased to welcome delegates from other Lyceums, also from the L.L.D.C. Prizes were distributed by our Church President.

In the evening an anthem ("Seek ye the Lord") was given by the Lyceum, the solo being rendered by Miss R. Bowden. This was a very successful one indeed.

On Saturday, July 7th, we held our Annual Outing, when 35 journeyed to Boxmore, leaving Euston at 10-50. A very nice tea was served at the Fishery Inn, and was very much enjoyed after roaming about in the woods and having various games, etc. We had a most glorious day. Each child received a gift.

On July 15th 30 members attended the Battersea Town Hall.

NOTTINGHAM, Mechanics' Hall.—Anniversary Day, June 24th. Two Model Sessions were rendered (morning and evening), interspersed with special vocal solos by Mrs. Farnath and Mr. Collingham, and violin solos by Master Joseph Hitchener. Miss Rayner conducted both Sessions. An afternoon meeting was held. Mr. Farnath presided. Address by Miss Rayner; clairvoyance by Mrs. Baker.

The Anniversary Services were continued in our Mission Room on Monday evening. Short addresses by Lyceum Leaders. Clairvoyance by Mrs. Baker.

Wednesday evening, Mr. Farnath presiding, address and clairvoyance by Mr. Arthur Clayton. Soloist, Mrs. Farnath.

Thursday evening, the whole of the service was rendered by our Lyceumists under 14 years of age. The week's services were very successful in every way.—O. Peel, Sec.

WELLINGTON, Kent Terrace, New Zealand.—Our Lyceum Sessions during May have been well attended and very much enjoyed. During our Session on May 13th Mrs. Webb gave an entirely impromptu trance address, upon the subject of "Mothers' Day." This novel feature greatly enhanced the beauty and interest of the Session. The opening of the Lyceum social activities was held on May 12th, when a Lyceum Social was a great success. We have elected a Lyceum Social and Entertainment Committee to attend to these efforts, so we are expecting some good times ahead.—S. Harris, Sec.

WINNIPEG, Polson Avenue.—We held our Open Session on July 1st. It was one of the finest Open Sessions in the history of our Lyceum. We had 47 adults present. We were glad to see some of our old Lyceumists visiting us. We also had with us Dr. Irwin from Rochester, N.Y., U.S.A., who has been lecturing in the City for the past two weeks. We were very glad to have him speak to our children. Pearls, songs, recitations and pianoforte solos were given by Daisy Knox, Sylvia Parkinson, Irene Turner, Verna McLeod, Harry and Lennie Towns, Mrs. Parkinson, Mrs. Knox and Mr. Barnes. Quartette by Misses McLeod, Miss Benson and Mr. Knox. Recitation by Willie Towns. The Session was conducted by Mr. J. Knox. We held our Annual Picnic July 2nd at Winnipeg Beach. Although the weather was poor, we all had a good time.—J. Knox, Sec.

MR. A. T. CONNOR. CHANGE OF ADDRESS.

MR. A. T. CONNOR,
4, Palmerston Road,
Forest Gate,
London, E.7.

Births, Marriages, and In Memoriam.

Ordinary Intimations will be inserted as follows:—Not exceeding twenty-four words, free. 6d. will be charged for every additional nine words. Poetry 6d. per line. Payment must accompany all intimations of more than 24 words, or they cannot be inserted. In Memoriam for any previous year will be charged 1/- for 24 words, and 6d. for additional 9 words. Poetry 6d. per line.

MARRIAGE.

CURTIS—WHEATLEY.—At Attercliffe Spiritualist Church, on June 27th, Mr. A. Curtis (Northam, Devon) to Miss Hilda Wheatley (Brimington), member of Chesterfield Spiritualist Choir. Congratulations from Chesterfield. Miss Chiltern carried out musical arrangements.

HULL, DAIRYCOATES.—ROBERTS—LENG.—June 2nd, at St. John's Church, Newland, Albert, second son of Mr. and Mrs. Roberts, to Millicent, daughter of Mr. and Mrs. Leng, both of Hull.

IN MEMORIAM.

GREAT HARWOOD.—In loving memory of my dear Grandma (Mrs. Waterhouse), who passed away August 13th, 1926.

Her hope was bright, her faith was strong.
From Clara.

LEICESTER, Rupert Street.—In loving memory of Elsie May Watson, who passed to the higher life July 29th, 1927. Missed by all.
—J. Wicks, Sec.

MANCHESTER, Collyhurst.—In loving memory of Our Ethel, who passed to the higher life on August 28th, 1927.

"Sometime we'll understand."
—Mother, Dad, Sisters and Brothers.

MANCHESTER, Collyhurst.—In loving memory of dear Ethel, who passed to the higher life on August 28th, 1927.

May roses ever bloom along progression's pathway.
—George.

NELSON.—In sweet memory of James Parkinson, who passed into higher life on August 8th, 1927.

"A link that will never be broken."
—From all at Home.

South Manchester Lyceum, Princess Hall.

The ANNUAL DEMONSTRATION will be held on
SATURDAY, SEPT. 8TH.

Meet at School, at 2-45 p.m. prompt, and walk in procession to ALEXANDRA PARK, headed by the OPENSHAW ORIGINAL PRIZE BAND.

A cordial invitation is given to all Lyceumists and friends to join us in the Demonstration.

A Tea and Social will be held in the evening.

Tickets for Tea and Social, 1s. 3d. each.

£2,000 Effort.

Fellow Lyceumists,

The postcards still seem to keep up their sale, for which I am very grateful both to the General Secretary for the idea and paying for the postcards and to the Lyceums generally for their support. Will all Lyceums who have *not* forwarded their postcard receipts please send them to Mr. G. F. Knott, 20, Toad Lane, Rochdale. I would be very glad to receive from any Lyceumist or sympathiser any fertile ideas for the gathering together of the amount we set out for—but no wild-cat schemes please. I would be more than pleased to take the part of Sunny Jim, as represented by Uncle Bert in last month's BANNER, if only I had the cheque for the £2,000. One of my dear friends thought that there was a very sporting chance of my doing so just recently, but, unfortunately, it still remains a castle in the air. Ah, well; perhaps I shall meet the postman someday, and he will give me the news I so desire, that someone has remembered the effort handsomely. In the meantime I will just keep plodding along and feeling very thankful to those who do remember the fund to the best of their ability. This month my receipts are: Manor Park Lyceum 4s. 6d., Farthings collected 1s. 3d., Bolton (Bradford st.) 5s., Attercliffe Lyceum (receipts from one Easter egg) 4s. 6d. Postcard receipts as follows, per G. F. K., £5 17s. 7d., Easy Road Lyceum (Leeds) 15s., the late Middlesbrough Guild Class (per Mr. E. Nellist) 6s., a total this month of £7 13s. 10d. On behalf of the Union I once more tender sincere and grateful thanks to all who have taken part in raising and forwarding these sums. I have also forwarded 3 dozen pencils to another person to sell for the effort and I wish them every success.

HYDESVILLE POST CARDS, per G. F. Knott, June 16th to July 21st, 1928.

Littletown 1s., Bolton (Bradford Street) 1s., Armley 3s., Earby 1s. 9d., Bury (King Street) 9d., Derby 1s., Morley (Cross Church Street) 1s., Oldham (Waterhead) 1s., South Shields (Fowler Street) 3s., Hollinwood 1s. 6d., Doncaster (Catherine Street) 1s. 6d., Doncaster (King's Arcade) 9d., Rochdale (Penn Street) 1s., Stratford (London) 1s., Halifax (St. Paul's) 1s., Wakefield 9d., Lewisham 1s. 6d., Dewsbury 9d., Sheffield (Gifford Road) 2s. 6d., Northwick 3s., Hucknall 9d., Manor Park 9d., Rochdale (Baillie Street) 1s., Rochdale (Regent Hall) 5s., Grangetown 3s. 9d., Lancaster (Great John Street) 9d., Bury (Freetown) 1s., Brierfield 1s., Huddersfield (Ramsden Street) 2s. 9d., Hampton Hill 1s., Bradford (Otle Road) 3s. 6d., Tottenham 7s., Rugby 9d., Salford 2s., Idle 2s., Manchester (Progressive) 9d., Leeds (Easy Road) 3s., Quarnby 4s. 6d., Bristol (Providence Hall) 9d., Parkgate 3s., Nottingham D.C. 1s. 9d., Miss Rayner 1s. 6d., Mr. Kitson 1s., Mr. G. A. Mack 1s., Woolwich and Plumstead 2s., Rishton 2s. 4d., Leigh (Temple, Evans Street) 2s., Clapham 2s., Southampton 12s. 2d., Huddersfield (St. Peter Street) per W.B., 1s., Mrs. Nurse 1s., Mr. Williams, 1s. Total £5 2s. 6d.

Let us *all* keep on trying to push our efforts further to raise what was intended and put the Union once more on a sound financial basis.

Ideas and enquiries will always be welcomed.

Yours fraternally,

W. BURROWS,

Hon. Sec., £2,000 Effort.

29, Kliffen Place,

Coronation Road,
Halifax.

High Jinks in Nursery-land.

By VERONTAS, The Guild Imp.

III. THE HIGH JINKS ASSOCIATION.

It is much to be questioned if the Harvest Moon, or any other sort of moon—even in Fairy Land—ever looked on a stranger sight. It was well that the magic builders had produced their very best and strongest work, for the bridge was sorely tested by the numbers that thronged upon it. And it was a pity that Gerald could not see the historic procession of which he had been appointed leader. The Fairy Queen; the Witch of the Wood; subordinate princes and princesses of Fairydom; insubordinate chiefs and sub-chiefs of Elfdom; the heroines and heroes and villains, and all the numerous rank and file of Nursery Land were there, together with wizards and witches and magicians galore. Little Red Riding Hood, with her wolf and Old Mother Hubbard's dog on leads made of flowers, followed close behind Saint George—who, having lent his charger, was reduced to having to ride as best he could on his dragon (he had to ride, for his armour was too heavy for him to be able to walk in comfort or safety to others); and the Saint followed Beanstalk, who rode on Brindle, his mother's cow, beside Fee Fi Fo Fum, who carried Bo Peep on his shoulder. All the animals and all the birds and all the folks of Nursery-Land were present and taking part. It was indeed a royal welcome, and it is a pity that Gerald was not able to watch it as well as take the lead, and that the only mortal who was allowed to see it should not have been able to remember it all. Slowly and majestically the procession approached the castle gates, and Gerald suddenly noticed that the bridge did not go quite up to the gate, but left rather a wide gap; and he hoped with all his heart that his horse would not try to jump across, for he was not at all sure that he would be able to stop on its back. But he did not have to wonder long, for as he approached his side of the gap a bugle call rang out, and what had looked like a strong paling in front of the gate began to sink slowly into the gap. Gerald at once recognised it as a drawbridge, and was rather ashamed of having felt anxious; but he soon forgot his fear when he noticed that as the drawbridge fell into its place, some sort of machinery was at work drawing the heavy castle gate up into a resting place in the masonry, until at last it disappeared from sight. Gerald urged his charger towards the drawbridge, but Amteck came up and seized the reins.

"Not quite so quick," he smiled, and at his touch the horse stood still while all the Nursery-Land Leaders crossed over the moat and assembled in the castle gateway; and it was into this cheering crowd that Gerald was at length led by Robin Hood and Maid Marion.



The procession was now broken up, and Gerald found himself once more with the Nursery-Land kiddies, who hurried him away from the elders to show him the view from the castle walls (they said). But Gerald was getting quite wise, and this did not deceive him.

"What are they going to do while I am kept away?" he demanded.

For a moment they looked at him, and then they all burst into a merry laugh—and, try as he would, Gerald could not keep from joining in; and soon he was laughing as merrily as any of them.

"He's getting clever, isn't he?" laughed Tommy Tucker. "I suppose we had better tell him," and, as the others nodded assent, "we're to keep you here while the elders are getting things ready for the revels."

"Revels," asked Gerald, staring around. "What are revels?"

"Oh, I thought you went to school," broke in Miss Muffett, who still seemed to feel just a little bit spiteful.

"So I do," cried Gerald.

"Well, then, I thought you learned things at school." She was continuing, when Tommy interrupted her, and the other girls pushed her into the background.

"A revel is a party," he explained; "eating and singing and dancing and being allowed to sit up after bed-time; sitting around the fire, telling stories and jokes—having high jinks. This meeting is being held to celebrate the fifty-thousandth anniversary of the telling of the first nursery tale, and you have been brought to take part."

"But why me?" asked Gerald, who *would* have liked to know.

"We don't rightly know," answered Tommy. "Maid Marion or Queen Mab or somebody saw you in your Earthland forest or meadows or somewhere, and took a liking to you or something—and here you are."

Gerald could not claim that he knew much more about the reason for his invitation than before Tommy's explanation, but he wisely decided to let the matter rest for the present, and to ask some of the elders—if and when he got a chance. Meantime, he inquired about the revels.

"Where are the revels going to be held?" he asked.

"In the banqueting hall, I think," answered Tommy Tucker, who seemed to be the appointed spokesman. "We shall have supper first—"

"All but one," cried Bo Peep; "you'll have to sing for yours before you get any; so *you* won't have supper first."

"Do you really have to sing for your supper?" asked Gerald; "I thought it was only part of a rhyme."

"Of course it's part of a rhyme, and of course I have to sing," said Tommy, who seemed to be rather annoyed at Gerald's remark.

"Then it's true!" went on the unfortunate Gerald.

"Of course it's true," cried Tommy; "why shouldn't it be true?"

"W-w-well," stammered Gerald, "I didn't think anybody could sing if he was hungry; I would feel more like crying."

"So would anybody else but Tommy Tucker," broke in Little Red Riding Hood, who had made herself Gerald's friend and defender; "but he seems to like doing it—I sometimes think he does it to make himself feel hungrier, so that he can eat more."

"Hey, I never thought of that," exclaimed Simple Simon—"I'm going to learn to sing."

"You'll have to buy a voice first," growled Tommy, quite upset. "I like singing, and I *can* sing; so why shouldn't I?"

There was only one reply to this question,—why shouldn't he? But nobody troubled to say it, and the talk went on about the revels and what was going to be done at them, until Little John's huntsman's horn was heard sounding the recall, and the youngsters started in a wild race for the banqueting hall and the feast.

The great hall—large enough to more than hold all that were there—was decorated with flowers and evergreens, and seemed to be full of long tables running from end to end and loaded with food. At one end of the hall was a dais (or platform), on which the Fairy-Land and Nursery-Land celebrities were seated around a special table. Amteck was at the head of this table, and Gerald was at once summoned to take the vacant place at the Chief Herald's side. As he walked up to the dais, Gerald suddenly began to wonder where the light was coming from. There were no candles or torches, and not even a fire. As soon as he reached the platform, however, he saw how it was done. Thousands of fire-flies had been invited, and these had obligingly arranged themselves in clusters around and about the hall, one particularly large cluster having formed itself about an evergreen shrub in the middle of Amteck's table. The hall was brilliantly lighted, and Gerald could not but marvel at the simplicity of the idea. Also, he thought how he would in future be able to play in the woods after dark, when he returned to his Earthland home, if he could only get friendly with the fire-flies. But he had to stop thinking of himself and his plans, for Amteck had risen and was beginning to address the company.

"Friends all," he was saying, "in the name of the Elf King I bid you welcome to our banquet and the revels which will follow. But before we start eating I want you all to listen to the song of Little Tommy Tucker, who, as you all know well, is destined through the ages to sing for his supper. Attention, please, for Tommy Tucker."

With a loud hurrah the guests sat themselves back in their seats, while Little Tommy Tucker stood on a table and sang his age-long song.

(To be continued).

The British Spiritualists' Lyceum Union.

BIRMINGHAM COUNCIL DISTRICT:

- Secretary, Mr. D. Straw, 13, Hawthorn Grove, Whitmore Road, Small Heath, Birmingham.
 District Visitor, Mr. R. H. Smith, 672, Pershore Road, Selly Park, Birmingham.
 G Birmingham, Handsworth, 2-55 p.m. Miss H. Brown, 109, Victoria Rd., Aston, Birmingham.
 G Birmingham, Stireley, 11-0 a.m. Miss A. E. Jarvis, 50, Holly Road, Cotteridge, Birmingham.
 G Smethwick, 107, High St., 2-45 p.m. Mr. J. Cotton, 68, Union Street, Smethwick, Staffs.
 G Walsall, Temperance Hall, Freer-St., 2-40 p.m. Mr. N. Hughes, 13, Renwick Terrace, Frederick Street, Walsall.
 G Wolverhampton, Molineux Alley, Drummond St. 2-30 p.m. Mr. L. Frost, 40, Prestwood Road, Heath Town, Wolverhampton

BOLTON COUNCIL DISTRICT:

- Secretary, Miss A. Dean, 77, King Street, Bury, Lancs.
 District Visitor, Miss D. Ward, 12, Mount Pleasant St., Horwich, nr. Bolton.
 E Bolton, Bradford-street, 10 a.m. Miss E. Holt, 8, Glenthorne Street, Bolton.
 E Bolton, Deane-road, 10-15. Mr. M. Mackay, 201, Ainsworth Lane, Bolton.
 E Bolton, Henry-street, 10-30 Mr. W. Monk, 38, Bull Lane, off Lever Street, Bolton.
 E Bury, 66, King-street, Rochdale-road, 11 a.m. Miss A. Dean, 77, King St., Bury, Lancs.
 E Horwich, Chorley New-road, 10 a.m. Miss L. Wilkes, 1, Wright-street, Horwich.
 E Leigh, Evans St. 10-30 a.m. Mr. S. Leadbetter, 7, Smiths Lane, Hindley Green, nr. Wigan.
 E Radcliffe, Railway St., 10-30. Mr. W. Haworth, 20, Firwood Cres., off Outwood Rd.
 E Walkden, Barlow St. 2-30 p.m. Mrs. Hampson, 16, Newearth Rd, Walkden.

BRADFORD COUNCIL DISTRICT:

- Secretary, Mr. E. Aked, 27, Arctic St., Beechcliffe, Keighley.
 District Visitor, Miss S. Hudson, 29, Fell Lane, Keighley.
 D Bradford, Harker-street. 1-45 p.m. Mrs. Clayton, 730, Wakefield Road, Bradford.
 D Bradford, 423, Manchester-road, 1-45. Mrs. T. A. Pickles, 15, Pennington Terrace, Little Horton, Bradford.
 D Bradford, Lalsterdyke, No. 5, Lalsterdyke, 10-30 & 1-45. Mr. J. Babbs, 3, Dundas St. Lalsterdyke.
 D Bradford, Milton, 16, Lansdowne Place, off Morley St. 10-30. Mr. W. Simpson, 29, Wheatlands Drive, Daisy Hill, Bradford.
 D Idle, Co-op Hall, 1-45. Miss A. W. Jacques, 29, Palin Avenue, Silverhills, Bradford.
 D Keighley, Heber St., 10 and 1-30. Miss L. Robinson, 92, Bogthorn, Oakworth, nr. Keighley.
 D Saltaire, The Institute, Victoria Road. 1-45 p.m. Mr. W. Simpson, 16, William Henry Street.
 D Shipley, Teal-court, 10-45 and 1-45. Mr. E. H. Coles, 46, Scarboro' Road.
 D Windhill, School Hill, 10-30 and 1-45. Mrs. E. Feather, 7, Maypark Terrace, Shipley.

COVENTRY DISTRICT:

- Secretary, Mrs. E. C. Coe, 82, Coronation Rd., Coventry.
 District Visitor, Mr. H. Burrows, Ryburn House, Craven-st., Queensland-avenue, Coventry.
 G Coventry, Bull-street, Off Hertford-street. 3-0 to 4-30 p.m. Miss D. E. Matthews, "Oakdene," 43, Blythe Road, Hillfields, Coventry.
 G Coventry, Broadgate, King's Hall, Vicar Lane (off Smithford St.), 3-0 p.m. Mrs. E. Coe, 82, Coronation Road, Coventry.
 G Coventry, Foleshill, Broad St., 11 a.m. Mrs. E. E. Hutton, 63, Churchill Ave., Foleshill, Coventry.
 G Coventry, Lockhurst-lane, 11 a.m. Mrs. R. Wellings, 73, Munition Cottage, Holbrook's Lane, Coventry.
 G Nuneaton, Norman Avenue, 11 a.m. Mr. N. Waters, 47, Alexandra St., Nuneaton, Warwick.
 G Rugby, Co-op Chambers, Sheep St., 11 a.m. Mr. Brierley, Bridget St., Rugby, Warwick.

HALIFAX AND HUDDERSFIELD COUNCIL DISTRICT:

- Secretary, Mr. T. Ellis, 74, Firth St., Huddersfield.
 District Visitor, Mr. F. Baldwin, 14, Clay St., Hanson Lane, Halifax.
 D Brighouse, Commercial St., 10 a.m. and 2 p.m. Mr. E. Brook, 30, School View, Church Lane, Lower Edge, Elland.
 D Halifax, Alma St., 10 and 1-45. Mr. P. Chapman, 47, Grove Ter., Upper Washer lane, King Cross, Halifax.
 D Halifax, Queen's Rd., 10 and 1-30. Mr. G. Scales, 34, Ripon St., Kingston, Halifax.

- D Hebden Bridge, Hope Street, 1-45. V. Whitham, 5, Oxford St., Stubbin Holme, Hebden Bridge.
 D Huddersfield, Ramsden St., 10-30 a.m. Mrs. F. Seal, 31, Midland St., Hillhouse, Huddersfield.
 D Huddersfield, St. Peter St., 10-30 a.m. Mrs. J. Midgley, 13, Rose St., Turnbridge, Huddersfield.
 D Marsden, Oliver Lane. 10-30 and 2 p.m. Mr. I. Wilson, 91, Mount Rd., Marsden, nr. Huddersfield.
 D Quarmby, Harp Rd., Longwood, 10-30. Mr. H. Baxter, 10, Francis Avenue, Milnsbridge, Huddersfield.
 D Slaithwaite, Hollins Glen, 10-30 a.m. and 1-45. Mr. J. S. Farrington, 1432, Manchester Rd., Slaithwaite, Huddersfield.
 D Sowerby Bridge, Hollins-lane, 10 a.m., and 2 p.m. Mr. C. E. Sutcliffe, 9, Albert Rd., Sowerby Bridge.
 D West Vale, Green-lane, 2 p.m. Mrs. E. Rawnsley, 29, Green Lane, West Vale, nr. Halifax.

LEEDS COUNCIL DISTRICT:

- Secretary, Mr. A. W. Harding, 19, New Row, Thornes, Wakefield.
 District Visitor, Mr. H. Spencer, 21, Pickersgill St., Dewsbury Road, Ossett, Yorks.
 C Batley Carr, Carr Street, 10 and 1-30. Mr. W. Womersley, 224, Common Side, Hanging Heaton, Batley.
 C Birstall, Batley, Railway Terrace, 1-45 p.m. Mrs. H. M. Gooder, 29, Wensleydale Parade, Batley.
 C Castleford, Lower Oxford St., 10-30 and 1-30. Mrs. K. Wright, 23, Wood Street, Castleford.
 C Cleckheaton, The Old Robin, 1-45. Mr. T. Brooks, 308, Highfield Buildings, Bradford Road, Littletown.
 C Dewsbury, Wellington Rd., 10 and 1-45. Mr. A. Oakes, 84, Thornhill Rd., Dewsbury.
 C Heckmondwike, 2 p.m. Mrs. S. Roberts, 4, Herbert St., Heckmondwike.
 C Hull, Dairycoates, 9, Eastbourne St., 1-45 p.m. Miss M. Jackson, 64, Beecroft St., St. George's Rd., Hull.
 C Hull, Gipsyville. Co-op. Rooms, Coltham St., 2-30. Mr. C. A. Halstead, 120, North Road, Gipsyville, Hull.
 C Hull, Holborn Hall, Holborn St., Witham, 10-30 a.m. Mr. J. A. Buckton, 43, Tadman St., Hull.
 C Leeds, Armlay, Theaker-lane, 2 p.m. Mr. G. Lee, 27, Genoa Rd., Thornhill Rd., Wortley, Leeds.
 C Leeds, Psycho, 24, Brunswick Place, North St. 2-30 p.m. Mr. A. Daisley, 21, Weldon Pl., Dewsbury Rd., Leeds.
 C Leeds, 79, Easy Rd., 2-30 p.m. Miss McDonald, 42, Charlton St., East Park Rd., Leeds.
 C Leeds, Horsforth, Scout Hut, Broadgate Lane. 3 p.m. Mrs. Eccles, 67, Victoria Gardens, Horsforth, Leeds.
 C Littleton Wall St., 2 p.m. Mr. G. Duffield, 11, Westfield Ter., Little Green Lane, Heckmondwike.
 C Moorthorpe, Barmley Rd., 10-30 a.m. and 2-45 p.m. Miss A. Lawley, 5, Victor St., South Emsall, nr. Pontefract.
 C Morley, Cross Church St., 1-45. Mr. H. Mitchell, 58, Springfield Lane, Morley.
 C Morley, Queen St., 10-30 and 1-45. Mrs. J. Harrison, 10, King St., Morley, Leeds.
 C Normanton, Queen St., 10-30 a.m. Mr. E. Calcutt, 83, Queen Street.
 C Normanton, Assembly St., 11-30. Mr. J. Bird, 1, Stanley St., Normanton, Yorks.
 C Scarborough, Sherwood St., 1-45 p.m. Mrs. Middleton, 82, North Marine Rd., North Cliff Scarborough.
 O Wakefield, Kirkgate, over Public Benefit Boot Shop (side entrance), 1-45, Miss D. Harding, 19, New Row, Thornes, Wakefield.
 C York, Span Lane, 10-30 and 1-45. Mr. S. Whitman, 5, Foss Bank, Monkgate, York.

LIVERPOOL COUNCIL DISTRICT:

- Secretary, Mrs. L. George, 85, Queen's Rd, Everton, Liverpool.
 District Visitor, Mrs. E. Clitheroe, 69, Lime St., Wigan.
 F Birkenhead, 46, Bridge St., 11 a.m. Mr. Hirst, 3, Cedar St., Birkenhead.
 F Chester, Common Hall St., 11 a.m. Mr. C. Hesketh, 6, Goss Street, Chester.
 F Liverpool, Dauby St., 10-30 a.m. Mrs. Raymond, 20, Morningside Rd., Bootle, Liverpool.
 F Liverpool, Boaler St., 3 p.m. Mrs. L. George, 85, Queen's Road, Everton, Liverpool.
 F Rock Ferry, New Chester Rd., 2-30 p.m. Mr. J. C. Fitzgerald, 70, Cobden St., Birkenhead.
 F Runcorn, Ashridge St., 10-30 a.m. Mr. C. L. Cohen, 103, Greenway Road, Runcorn, Cheshire.
 F Southport, 10-30. Mr. F. Newsham, 6, Victoria St., Southport.
 F St. Helens, Charles St., 11 a.m. Mr. J. J. Dennett, Café, Arthur St., St. Helens, Lancs.

- F Warrington, Academy St., 1-45 p.m. Mr. G. E. Hasler, 6, Naylor St.
 F Wigan, Millgate Hall, Millgate, 1 a.m. and 1-45. Miss E. D. Eachus, 51, Thicknesse Avenue, Beech Hill, Wigan.
 F Crewe, Mill St., 10-30. Mrs. J. P. Brown, 9, Mill Street, Crewe.

THE LONDON COUNCIL DISTRICT:

- Secretary, Mrs. Calway, 13, Elmbrooke St., Eltham, S.E.9.
 District Visitor, Mr. F. J. Miles, 7, Cambridge Road, Teddington, Mdx.
 H Battersea, 3-0. Mr. S. Williams, 91, Fernside Rd., Balham, London, S.W.12.
 H Bowes Park, Princess Hall, Green Lanes, Palmers Green, N.13. 3 p.m. Mrs. K. M. Stroude, 28, New River Crescent, Palmers Green, N.13.
 H Brixton, 143a, Stockwell Park Rd., S.W.9. 3 p.m. Mr. F. B. Cross, 10, Somerleyton Road, Brixton, S.W.9.
 H Chatham, Queen's Hall, Military Road, 3 p.m. Miss E. Taylor, 34, Kingswood Rd., Gillingham, Kent.
 H Clapham, St. Luke's Rd., S.W.4 3 p.m. Miss P. Lewis, 124, Coldharbour Lane, London, S.E.5.
 H Croydon, "The New Gallery," Katharine Street, Croydon. 3 p.m. Miss G. M. Robertson, 9, Foulsham Rd., Thornton Heath, Surrey.
 H Eltham, Mr. J. P. T. Calway, 13, Elmbrook St., Eltham, S.E.9.
 H Forest Hill, Beadnall-road, 3 p.m. Miss A. Payne, 29, Beadnall-road, Forest Hill, S.E.
 H Hackney, Amburst Rd., 3-0. Mr. L. A. Banfield, 30, Stoneham Rd., E.5.
 H Hampton Hill, Middlesex, Windmill Rd., 3 p.m. 128, Church Rd., Canonbury, London, N.1.
 H Kingston-on-Thames, Bishop's Hall, Thames St., 3 p.m. Miss E. F. Ashley, 21, Chesham Rd., Norbiton, Surrey.
 H Lewisham, Lime Hall, Lime Grove, 3-0 p.m. Mr. Hanford, 57, Loampit Vale, Lewisham, S.E.13.
 H Little Hford, Third Avenue, Church St., Manor Park, 3 p.m. Mr. W. P. George, 53, Little Ilford Lane, Manor Park, E.12.
 H Manor Park, Shrewbury Rd., 3-0 p.m. Mrs. E. M. Marmoy, 30, Ashley Rd., Forest Gate, E.7.
 H North London, Grovedale Rd., 3-0 p.m. Miss N. C. Whorley, "Westcliff," Bramber Road, North Finchley, N.12.
 H Peckham, Lausanne Rd., 3 Op.m. Mrs. F. Franklin, 8, Edith Rd., Peckham, S.E.15.
 H Plaistow, Braemar Rd., E.13., 3 p.m. Miss J. E. Pantrey, 39, Desford Rd., Canning Town, E.16.
 H Stratford, Adminton Road, Miss E. Connor, 4, Palmerston Rd., Forest Gate, E.7.
 H Tottenham, Warmington House, 744, High Rd., 3-0 p.m. Mr. W. H. Markham, 226, Victoria Rd., nr. Edmonton, N.9.
 H Walthamstow, Workman's Hall, High St., E.17. 3 p.m. Mrs. H. Harding, 18, Wellington Rd., Walthamstow, E.17.
 N Woolwich and Plumstead, Perseverance Hall, Villas Road, Plumstead, 3-0. Mr. W. Rainbow, 7, Leghorn Rd., Plumstead, S.E.18.
 H Southend and Westcliff, Westbro' Rd., Westcliff-on-sea, 3 p.m. Mr. F. B. S. Kemp, 10, Nelson Rd., Leigh-on-Sea.

MANCHESTER COUNCIL DISTRICT.

- Secretary, Mr G A Dixon, 31, Royd St., C. on M., Manchester
 District Visitor, Miss G. Ashton 71, Hulme Hall Lane, Miles Platting, Manchester.
 F Hollinwood, Byrom St., 10-30. Miss L. Ball, 38, Vicarage St., Hollinwood, nr. Oldham.
 F Manchester, Progressive, 38, Maskell St., 10-30 a.m. Miss E. Jackson, 11, Rawcliffe St., Moss Side, Manchester.
 F Manchester, Halliwell St., Cheetham Hill, 10-30. Mrs. Gershon, 36, Anne St., Cheetham Hill, Manchester.
 F Manchester, Collyhurst, Oldham Rd., 10-30 a.m. Mr. H. Redden, 29, Silver St., Miles Platting, Manchester.
 F Manchester, Eccles (Milton), Booth St., 11 a.m. Mr. C. H. Roach, 7, George Henry St., Eccles New Road, Salford, Manchester.
 F Manchester, Durham St., Market St., Droylesden 2-30 p.m. Mrs. E. Eccles, 28, Ferris St., Hr. Openshaw, Manchester.
 F Manchester, Harpurhey, 24, Sharston St., 2-30 Mrs. A. Hall, 10, Dunstan St., Moston Lane, Blackley, Manchester.
 F Manchester, Hr. Openshaw, 141, Old Lane, 2-30 p.m. Mrs. Naylor, 1, Reginald St., Hr. Openshaw, Manchester.

F Manchester, Longsight, Shepley St., 2-30. Miss P. Owen, 7, Birchfields Rd., Longsight, Manchester.
 F Manchester, Moss Side, Stanley Grove, 2-30. Mr. G. Walker, 8, Oak Bank Avenue, Chorlton-cum-Hardy.
 F Manchester, Moston, Church Lane, 10-30. Miss M. Wright, 96, Dean Lane, Moston, Manchester.
 F Manchester, Newton Heath, Allen St., 2-30 p.m. Mr. W. Taylor, 1, Willow St., Oldham Rd., Fallsworth.
 F Manchester, Openshaw, 915, Ashton Old Ed., 2-30. Mr. H. Bradley, 350, Abbey Hey Lane, Gorton, Manchester.
 F Manchester, Pendleton, Highfield Chambers, 94, Broad St., 2-30 p.m. Miss D. Woolfenden 3, Mount Vernon, Strawberry Hill, Pendleton, Manchester.
 F Manchester, Salford (Central), St. Philips Place, 10-30 and 2-0. Miss Goldstraw, 56, Carlton St., Eccles New Rd., Weaste, Manchester.
 F Manchester, South: Princess Rd., 2-30 p.m. Mr. J. Woodcock, 156, Cornbrook St., Old Trafford, Manchester.
 F Manchester, Stretford, Watnook St., 2-30 p.m. Mrs. E. Cooke, 134, Lacy St., Stretford, Manchester.
 F New Manchester, Brunswick Chambers, 65, Brunswick St., C-on-M., 10-30 and 2-30. Mr. Jones, 118, Hyde Rd., Ardwick, Manchester.
 F Northwich, Co-op. Hall, Station Rd., 1-45 p.m. Mrs. A. Wood, 67, Manchester Rd., Lostock Graham, Northwich.

E Preston, Central, Moor Lane. 10-30 a.m. Mr. R. Tallon, 39, Victoria St., Preston.
 E Rawtenstall, Bk. Ormerod St., 10-30 Mrs. Tann, 6, St. Mary's Pl., Rawtenstall, Rossendale. Lanes.
 E Rishton, Eachill Rd., 10-30 a.m. Mr. F. Matthews, 27, Spring St., Rishton.
 E Barrow-in-Furness, 165, Dalton Rd., entrance, 2nd door, Preston St., 2-0 p.m. Mrs. L. Brown, 49, Harrison St.
 E Barrow-in-Furness, Dalkeith St., 10-30 and 2 p.m. Mr. J. Fullard, 38, Monk St.
 E Lancaster, Gt. J. Street, 10-30. Miss M. Swale, 14, Gerrard St., Lancaster.
 E Lancaster, Alliance, Collegian Rooms, Gage St., 10-30 a.m. Mr. R. Askew, 155, Maine St., Skerton, Lancaster.

NOTTINGHAM COUNCIL DISTRICT.

Secretary, Miss Victoria G. Bayner, 112, Gregory Boulevard, Nottingham.
 District Visitor, Miss Carr, 53, Nesbitt St., Sutton in Ashfield.
 G Belper, Jubilee Hall, 10-30 a.m. and 2 p.m. Mr. J. H. Hawkins, Brookside.
 G Beeston, Notts., Barton St., off Station Rd., 10-30 and 2 p.m. Mr. G. Paling, 67, High Rd., Beeston.
 G Derby, Charnwood St., 10-45 & 2. Miss F. Heapy, 44, Grove St., Derby.
 G Eastwood, Co-op Hall, Nottingham Rd., 2-30. Mr. T. Walker, 86, Walker St., Eastwood.
 G Hucknall, Wesleyan Chapel Yard, Watnall Rd., 10-45; 2 p.m. Miss B. Leverton, 34, Florence St., Hazel Grove, Hucknall.
 G Leicester, Excelsior. Mr. W. B. Stevenson, 126, East Park Road.
 G Leicester, Liberty Progressive, Southampton Street, 3 p.m. Mr. S. J. C. Wheatley, 162, Belper St., Leicester.
 G Leicester, Rupert St., Lecture Hall, 11-0 a.m. Mr. John Wicks, 16, Curzon Street.
 G Leicester, Silver St., Queen's Hall, 2-45 p.m. Mr. L. Underwood, 77, Noble St., Leicester.
 G Lincoln, Midland Hall, 10-30 and 3 p.m. Mr. C. Crane, 1, Lytton St., Cannon St., Lincoln.
 G Lincoln, Progressive Hall, Coutham St., 10-30 a.m. Mrs. N. Willey, 10, Waterside South, Lincoln.
 G Long Eaton, Chapel St., 10-45 and 1-55. Mr. J. Waterfall, 11, High St., Long Eaton, Notts.
 G Mansfield, Dallas St., 10-30 and 2-0 p.m. Mrs. Price, 16, Herbert St., Mansfield, Notts.
 G Nottingham, Hawarden Terrace, Gregory Bvd., 11 & 2-0 p.m. Miss J. H. Marvin, 385, Berridge Road, C., Nottingham.
 G Nottingham (Mechanics' Minor Hall), North Church St., 2-45 p.m. Mr. O. Peel, 8, Briar St., Meadows.
 G Nottingham, Sherwood St. North, 2-30. Mr. A. W. Shipley, 4, Greenfield St., Dunkirk, Nottingham.
 G Nottingham, Pearson's Buildings, 10-45. Mr. J. Rose, 13, Henry Rd., off Millicent Rd., West Bridgford, Nottingham.
 G Sutton-in-Ashfield, Twitchell, 10-30 & 2. Mr. Reynolds, 114, Low Moor Rd., East Kirby, Notts.
 G Ripley, Co-op. Hall, Crossley St., 2 p.m. Mr. E. Hutchinson, Grosvenor Rd., Ripley, Derbyshire.
 G Ripley, Codnor & Dist., Victory Hall, Nottingham Rd., 2-0 p.m. Mr. J. E. Eyre, Derby Road, Marchay, Derbyshire.

THE SCOTTISH COUNCIL DISTRICT.

Secretary, Mr. J. M. Scott, 32, Elm St., Logie, Dundee.
 District Visitor, Mr. C. Rankine, 775, Dumbarton Rd., Dalmuir West, Glasgow.
 A Dalmuir, Broadway, Harmony Hall, Shaftesbury St., 1-30 p.m. Mr. J. Angus, c/o Millar, 450, Dumbarton Rd. Dalmuir.
 A Dundee, Fabian Hall, Union St., 12-45. Miss H. Heberton, 57, Ellengowan Drive, Arbroath Rd.
 A Edinburgh. E.A.S. Church, 9, Gayfield Square, Edinburgh, 1 p.m. Miss P. Lawrence, c/o E. A. S. Church, 9, Gayfield Sq., Edinburgh.
 A Glasgow, Govan, Raifhs Hall, 12-30 p.m. Mr. J. Shaw, 115, Smith St., Govanhill, Glasgow, S.2.
 A Glasgow, 100, West Regent-st., 1-30 p.m. Mrs. E. Hastie, 40, Queenshill St., Springburn, Glasgow.
 A Glasgow, Northern, 106, Napierhall St., 1-0. Miss R. Arnott, 8, Caithness St., C.4., Glasgow.
 A Glasgow, Southern, 14, Weir St., off Paisley Rd., 1-15 p.m. Mrs. A. McAlister, 109, MacLean St., Plantation, Glasgow.
 A Rosyth, Co-op. Hall, Backmarsh Rd., 2 p.m. Mrs. Egan, 136, Middlebank St., Rosyth Dunfermline, Fife.

SHEFFIELD DISTRICT COUNCIL:

Secretary, Mr. H. Heath, 17, Station Rd., Brimington, nr. Chesterfield.
 District Visitor, Miss M. Jones, 29, Bradford St. Attercliffe, Sheffield.
 O Barnsley, North Pavement, Mr. H. Lucas, 71, Honeywell St., Barnsley, Yorks.
 C Barnsley, Grace St., 2 p.m. Mr. J. Woodcock Staincross Hill Top, Staincross, Barnsley.
 C Chesterfield, Old Falcon Assembly Rooms, 10-30 Mr. J. J. Hobster 32, Holme-rd., Stone-gravels.
 C Doncaster, King's Arcade, 1-30 p.m. Mr. F. Cross, 155, Bably Rd.
 C Doncaster, Catharine St., 10-30 & 2. Mrs. S. C. Webb, 65, Elmfield Rd., Doncaster.
 C Mexborough, Lee's Arcade, 10-45 & 1-45 p.m. Miss E. Gamble, 34, Schofield St., Mexboro'.
 C Scunthorpe, I.L.P. Halls, Home St., 1-30 p.m. Miss D. Drury, 4, East St., Scunthorpe.
 O Sheffield, Bold-st., Bradford-st., Attercliffe Common 10 a.m. and 3-30. Mr. E. Johnson, 65, Sides Well Rd., Firth Park, Sheffield.
 C Sheffield, Darnall, Shirland Ln., 10-30 and 2-30 p.m. Miss M. Jones, 29, Bradford St., Attercliffe, Sheffield.
 C Sheffield, Heeley, 44, Gifford-road, 2-30. Mr. A. Truelove, 48, St. Barnabas Rd., Highfields, Sheffield.
 O West Melton, nr Rotherham, Adult School, Town End, Wath, 2-30 p.m. Mr. J. T. Paskell, 34, Oaklea Crescent, West Melton, nr. Rotherham.
 C Wombwell, Melville St., 1-45 p.m. Mr. J. Markham, 26, Station Lane, Wombwell, nr. Barnsley.
 C Parkgate, Ashwood-road, 2-30 p.m. Mr. J. Gotthard, 23, South St., Greasborough, nr. Rotherham.

SOUTHERN COUNCIL DISTRICT:

Secretary, Mr. H. G. Guy, Roydon, 119, Graham Rd., Southampton.
 District Visitor, Miss A. L. Scoggins, 3, Upper Hollingdean Rd., Brighton, Sussex.
 H Bristol, Providence Hall, Grosvenor Rd., 3 p.m. Mr. L. O'Connor, 111, York Rd., Montpelier, Bristol.
 H Devonport, Ferry Hall, 2-45 p.m. Mr. H. Holroyd, 2, St. Levan Rd., Devonport, Plymouth.
 H Exeter, Market Hall, 11-0 a.m. Mr. H. A. Grainger, Manoh, 23, Clifton Hill.
 H Portsmouth, 73, Victoria-rd. Southsea, 3 p.m. Miss C. Jones, 68, Hudson Rd., Southsea, Portsmouth.
 H Reading, Forester's Hall, London, St., 2-45 p.m. Mr. Giles, 5, Surrey Rd, Reading.
 H Southampton, Cavendish-grove, The Avenue, 3 p.m. Mr. E. W. Long, 111, Firgrove Rd., Southampton.

SOUTH-EAST LANCASHIRE COUNCIL DISTRICT:

Secretary, Mr. H. Greaves, 78, Newchurch Road, Bacup, Lancs.
 District Visitor, Mr. H. Buckley, 211, Oldham Road, Longsight, Royton, nr. Oldham.
 F Bacup, Christ Church-st., Todmorden-rd., 10-15a.m. Mr. B. Lord, 18, Green St., Bacup, Lancs.
 F Dearnley, Rochdale-rd., 10 a.m. Mrs. E. Hoyle, 4, Fielden St., Smithy Bridge, nr. Rochdale.
 F Heywood, William-st., 10 a.m. Mr. Marcroft, 6, Back High-street.
 F Heywood, B.M.U., Manchester St., 10-30 and 1-45 p.m. Mr. E. Shipley, 63, Aspinall St., Heywood, Lancs.
 F Middleton, Gilmour-st., 10-30 a.m. Mr. John Liddle, 108, Higher Townley-st., nr. Manchester.
 F Oldham, Waterhead, Equitable St., 10-30. Miss M. Aspinall, Littlemoor Lane, Oldham.
 F Rochdale, Baillie St., 10-30 a.m. Mr. W. Dewhurst, 7, Chestnut Place, Entwisle Rd., Rochdale.
 F Rochdale Penn-st., 10-15 a.m. Mr. T. Dixon, 183, Whitehall Street, Rochdale.
 F Rochdale, Regent St., 1-45 p.m. Miss D. Richards, 18, Jutland Avenue, Spotland Estate, Rochdale.
 F Todmorden, Roomfield Buildings, Halifax-road, 1-30. Mr. H. Sutcliffe, 4, Dalton Court, off Stansfield Rd., Todmorden.
 F Todmorden, Eagle St., 10 and 1-30 p.m. Mr. H. S. Potts, 8, Whiteplatte St., Todmorden.

Secretaries are requested to examine these Lists and send any necessary corrections to the General Secretary,

SOUTH WALES LYCEUM DISTRICT:

- G Barry**, Buttrills Rd., 2-45. Mr. S. G. Havard, 46, Dyfan Rd., Barry Dock, S. Wales.
G Caerau, 2 p.m. Mr. E. Jones, 28, Treharne Rd., Caerau, nr. Bridgend, S. Wales.
G Cardiff, First, 18, Park Grove, 2-45. Miss B. Davies, 3, Picton Place, Canton, Cardiff.
G Newport, Albany Hall, 3 p.m. Mr. A. G. Stanham, 12, Cuple Crescent, Newport, Mon.
G Ystrad, 2-30. Mr. E. S. Carpenter, 65, Avondale Rd., Gelli, Ystrad, Rhondda, Glam.

THE TEES-SIDE LYCEUM DISTRICT:

- Secretary**, Mr. E. Nellist, 2, Lobster Rd., Coatham, Redcar, Yorks.
District Visitor, Mr. Foster, Gurney Valley.
B Darlington, Elmfield Estate, Northgate, 2-30. Mrs. Christopher, 1, Hercules St., Springfield, Darlington.
B Darlington, Witton Park, 2-30. Mrs. E. Meek, 10, High Albion Street, Witton Park.
B Grangetown, Pochin Rd., 2. Mr. E. Nellist, 2, Lobster Rd., Coatham, Redcar, Yorks.
B Gurney Valley, 2-30 p.m. Mrs. James, 85, Gurney Valley, nr. Bishop Auckland.
B Horden, Miner's Hall, 2-30. Mrs. Foster, 11, Blackhills Terrace, Horden, Co. Durham.
B Middlesbrough, 57, Grange Rd., West, 2-30 p.m. Mr. J. Abbott, 7, Fairbridge St., Middlesbrough.
B Middlesbrough, United, Wilson St., 2-30 p.m. Mrs. R. Massey, 423, Newport Rd. (Back), Middlesbrough.
B Shildon, Fryers St., Temperance Hall, 2-15. Mr. J. C. Johnson, 4, Pickerings Place, Shildon Co. Durham.
B New Shildon, Newlands av., 2 p.m., Mr. J. Sunter, 14, West Road, Shildon, Co. Durham.
B Stockton-on-Tees, Cecil-st., 2-30 p.m. Mr. G. W. Neale, 60, Cecil St., Stockton-on-Tees.
B Stockton-on-Tees, New Brunswick-st., 2-30. Mr. S. Williams, 70, Hume St., Stockton-on-Tees.
B West Hartlepool, 3, Charles-st., 1-45 p.m. Mrs. Craik, 29, York St., West Hartlepool.
B West Hartlepool, Musgrave St., 1-45 p.m. Mr. E. Platts, 1, Princess St., Hartlepool.

THE TYNESIDE LYCEUM DISTRICT.

- Secretary**, Mr. G. P. Robson, 51, Bamborough Terr., North Shields, Northumberland.
District Visitor, Mr. W. Hall, 10, Curzon-st., Gateshead.

- B Ashington**, St. George's Hall, 2-30. Mr. W. Barton, 4, Hawthorn Rd.
B Blyth, 5, Regent St., 2-30. Miss M. Thompson, 31, Delaval Terrace, Blyth.
B Gateshead, Liberal Club Hall, 108, High West St. 2-30 p.m. Miss I. Graham, 85, Inskip Terrace, Gateshead-on-Tyne.
B Gateshead, Rectory Hall, St. Cuthbert's Pl., 2-30 p.m. Mrs. Mather, 47, Claremont North Ave.
B Hetton and District, 2-30 p.m. Mr. E. Reay, 43, Caroline-st., Hetton-le Hole.
B Hirst, Spiritual Church, Milburn St., Ashington, 2-30 p.m. Mr. J. Stafford, 53, Myrtle-st., Ashington, Northumberland.
B Houghton-le Spring, Miner's Hall, Robinson St., 2-30. Mrs. E. Campbell, 37, Quarry Row, Houghton-le-Spring.
B Jarrow, Market-sq., 2-30 p.m. Mr. F. S. Wales, 50, Clyde St., Jarrow-on-Tyne.
B Newcastle-on-Tyne, Benwell Co-op. Hall, 2-30. Mr. T. McCallum, 18, Dene View, So. Benwell Rd, Newcastle.
B Newcastle-on-Tyne, Heaton and Byker, Tosson Terrace, Heaton, 2-30 p.m. Mrs. R. Hunter, 34, Tosson Terrace, Heaton.
B Newcastle-on-Tyne, Wallsend, 11 a.m. Miss M. Davidson, 17, Briarwood Crescent, Walkerville, Newcastle-on-Tyne.
B Newcastle-on-Tyne, 4, Blandford Street, 2-30. Mr. A. Richardson, 1, Mary St., off Westgate Rd., Newcastle-on-Tyne.
B New Delaval and Newsham, Infants' School-room, 2-30. Miss M. Brewis, 68, New Row, New Delaval, Newsham, Northumberland.
B South Shields, Cambridge St., 2-30. Miss C. Stoker, 5, Morton St., South Shields.
B South Shields, Fowler-st., 2-30. Mr. R. Smith, 63, Hedley St.
B South Shields, High Shields, 2-30 p.m. Mr. T. Slesser, 16, Laburnum Grove, Cleddon, S. Shields.
B Southwick-on-Wear, Clockwell St. 2-30 p.m. Mrs. C. Schonewald, 5, Mary St., Southwick.
B Sunderland, 21, Derwent St., 2-30 p.m. Mr. A. Moore, 46, Scruton Avenue, Humbledon Estate, Sunderland.
B Sunderland, Victory, 2-30 p.m. Mrs. M. Graham, 62, Peacock St., West, Sunderland.
B West Pelton, Iron Schools, 2-30 p.m. Mrs. G. Dryden, 131, J. R. Mole, St., Perkinsville, Co. Durham.

- B West Stanley**, 2-30 p.m. Miss C. Stokes, 10, Red Row, Oxhill, West Stanley.
B Whitley Bay, 212, Whitley Rd., 2-30. Mrs. M. Hall, 17, Cambridge Avenue, Whitley Bay, Northumberland.

Area Lyceums.

- G Grimsby**, Kent-rd., 10-30 & 2 p.m. Mr. W. Piercy, 220, Wellington St., Grimsby, Lines
G Hanley, High St., 2-30 p.m. Mrs. A. Mason, 28, Cromwell St., Hanley, Staffs.
G Northampton, 6a, Newland, 10-45. Mr. Earl, 19, Salisbury St., Northampton.
G Tunstall, Piccadilly St., 10-45 and 2-0 p.m. Mrs. L. Smith, 19, Trubshawe St., Longport, Stoke-on-Trent

Oversea Lyceums.

- Calgary**, 1st Spiritualist Church, 7th Avenue and 3rd St., E. 2-30 p.m. Mr. W. A. Garrad, 2508, First St., E., Calgary, Alberta, Canada.
Dunedin, N.Z., Smith's Hall, Hanover St., 2-30 p.m. Miss R. Burgess, c/o Mrs. Green, Cumberland St., Dunedin North, New Zealand
East Hamilton, Ont., Canada, Balmoral Avenue, 2-30. Mr. A. H. Pickles, 297, Ottawa St., N. Hamilton, Ontario, Canada.
Johannesburg, 10-45 a.m. Jeppe St., Mr. A. E. Hart 27, High Ave., Bezuidenhuit Valley, North Johannesburg.
Methuen, Mass., U.S.A. Mr. D. Moore, 67, Centre St.
Sydney, Leigh House, 232, Castlereagh St., 2-15. Mrs. E. Morrell, Leigh House, 233, Castlereagh St., Sydney, Australia.
Toronto Progressive Lyceum Spiritualist Society, 1087, Queen St., W. Toronto, 2-0 p.m. Mr. E. Richardson, 13, Fermanagh Ave., Toronto, Ont., Canada.
Vancouver, Corner Hamilton & Purder St. Mr. W. H. Bradford, 777, Burrard St., Suite 49, Vancouver, B.C., Canada.
Wellington, N.Z. Kent Terrace, 2-30. Mr. S. Harris, 15, Forens Terrace, Wellington, N.Z.
Wellington, Cambridge Avenue. Mr. H. Bowles, 13, Myrtle Crescent, Wellington, New Zealand.
Winnipeg, Polson Avenue, 2-30 p.m. Mr. J. Knox, 275, St. Cross St., Winnipeg, Man., Canada.
Winnipeg, Princess St., 11 a.m., 3 p.m., 7 p.m. Mrs. Armit, 909, Selkirk Avenue, Winnipeg, Man., Canada.

Our Lyceum Guild.

(Worked in conjunction with the B.S.L.U. Education Scheme).

GUILD MOTTO:—"We live to learn, and learn to live."

OUR AIMS.

- (1) To be progressive.
- (2) To develop ourselves (A) physically; (B) mentally; (C) psychically; (D) spiritually.

DEAR FELLOW GUILDITES,

The Essay Competition closed last month, and I thank each member who sent in an essay. As soon as the essays are marked, the Competitors will hear the results, and the winners will receive their new badges with the Merit Badge added to it. Good luck to each of you.

Still a few of you, who passed the Examinations last February, have not yet sent for your new badge. Do hurry up, please, for it'll soon be time to start working for the next exams.

We wish each of you a very nice holiday, with fun and frolic and enjoyment; with your return to work or school full of energy and health, and readiness for tackling all the jobs to be done—especially the study for your next exam.

With fraternal greetings to all,

M. E. KITSON (GUILD LEADER),
 (37, South Street, Savile Town, Dewsbury, Yorks.).

THE S.N.U. FUND OF BENEVOLENCE.

I have pleasure in reporting the following income for May and June as follows: Donations received during May. Miss Boothroyd, per Mr. J. Dobson, 10s.; Mrs. White's Home Circle, Ulverston, 15s.; Blackpool Lyceum, Mr. Marklew's fee, 10s.; Miss E. Maude Bubb, £1; Mr. and Mrs. Scott, 10s.; Peterborough Forward Movement Church, £1 10s.; Barrow Psycho, Members' Tax, June, Sept., and Dec., 1927, £3 5s. 4d. Total, £8 os. 4d.

June. Mrs. Cox's Home Circle, 10s.; Mr. and Mrs. Scott, 10s.; Mrs. J. Wesley Adams, £2 2s.; Miss Sunderland, Sale of Bookmarks, £1 5s.; Southern District Council Picnic Tea-table Collections, £4 7s. 9d.; S.D.C. E.C., tea-table Collection, 8s. Total, £9 2s. 9d.

The Committee are truly grateful for this continued help, but would like to emphasise that they feel compelled at the present time not to grant any more help until the income is increased. There are 54 grants being sent out monthly; the expenditure being £46 10s. Please compare the income and expenditure and you will readily see for yourselves the need for the Committee's action. I am always at your service to acknowledge all monies. Lyceumists please note and help with your mites. I have some collecting books if anyone would care to have one to help in this way.

With grateful thanks,

Yours fraternally,

MARY L. STAIR, Hon. Sec.,
 32b, North Street,
 Keighley, Yorks.

LYCEUM PROGRESS AT HANLEY.

The Hanley Lyceum have had a very successful year and held the Anniversary in the Victoria Hall, which holds 2,000 people. The balance sheet shows the Anniversary total to be £57 17s. £25 has been donated to the Church. £20 paid for a piano. The balance in hand is £21 1s. 1d. There is a Sports and Sick Club which has a balance of £1 8s. 8½d.

TEES-SIDE DISTRICT.

The Quarterly Meeting will be held at Middlesbrough (Back Wilson St.) on Sunday, August 13th, 1928, at 10-30 a.m. prompt.

Mr. E. Nellist, A.N.S.C. (Council Secretary) will read a paper, to be followed by discussion, at the afternoon Session. A good attendance is desired, please.—Ed. Nellist, A.N.S.C., Sec.