

ANCIENT SKIES

"Come Search With Us!"

Official Logbook of the Ancient Astronaut Society

(c) COPYRIGHT 1980 ANCIENT ASTRONAUT SOCIETY - ALL RIGHTS RESERVED

VOLUME 7, NUMBER 1

1921 ST. JOHNS AVE., HIGHLAND PARK, ILLINOIS 60035 USA

MARCH-APRIL, 1980

ANCIENT PYRAMID BUILDERS OF AUSTRALIA

BY REX GILROY*

As an archaeologist/historian, I wholeheartedly support the ancient astronaut hypothesis. I have seen far too many ancient aboriginal cave paintings and rock drawings which depict astronaut-type figures to think otherwise.

For the past several years, I have carried out measurements and photographic work on stone alignments, standing stones, carved human-head stone circles and other structures at a central New South Wales site which covers an area of several square miles. These astronomical structures could not possibly have been the work of the primitive aborigines, but rather are the work of some highly advanced race of astronomers who erected them perhaps 15,000 years ago. Recently I photographed ancient aboriginal rock art depicting astronaut-type human figures, which, say the aborigines, came down from the stars to create life on Earth far back in their "dream-time."

During the last twelve years, I have made extensive excavations at eight different ancient camp sites in western New South Wales. The camp sites contain a very large number of hand-axes, clubs, pounders, adzes, knives, chisels, choppers and other artifacts ranging in weight from 15 to 36 pounds. Among the artifacts are fossil remains of large, human molar teeth (one measures 67mm in length and is 50 x 42mm across the crown) along with bones of animals which apparently were eaten by the occupants of the camp sites. The strata of these sites date to the Pleistocene period, 500,000 years ago. The artifacts, teeth and other remains indicate that the creatures stood from 12 to 20 feet in height and weighed hundreds of pounds. The evidence suggests that at least two races of giants occupied the region.

I have photographed many large fossilized footprints of giant humans in both Queensland and New South Wales.

Over the years, I have gathered aboriginal legends which describe the arrival of strange beings, including giants, from the sky in great birds, who imparted culture to the aborigines. According to the legends, the creatures landed in the New Guinea region and erected megalithic stone structures, now submerged off the New Guinea coast. This work was

done by the "culture-heroes" before the land was covered by the sea. The identity of the race remains a mystery; however, the physical evidence of their presence covers a large area of Australia and the islands close to the continent.

The most outstanding evidence that Australia was colonized by a highly advanced, technological civilization thousands of years before recorded history, is the large number of stone and earthen pyramidal structures that exist on the continent and in New Guinea. There are five crude, stepped pyramids approximately 100 feet in height in the wilds of the East Sepik district of Papua, New Guinea. They are identical to a structure found just north of Brisbane in southern Queensland, Australia.

The Brisbane pyramid, first reported by European settlers in 1851, stands 100 feet high and consists of 18 terraces built of small to large lumps of rock. Each terrace is 4 feet high and 8 feet wide. The top of the structure is capped by a gigantic rock weighing about 10 tons. The structure is built of ironstone which apparently came from an ancient quarry about 12 miles distant.

Farther north, there are two more pyramidal formations, both built of stone rubble, which are erected one behind the other, close together, and are in direct alignment with the stepped pyramid to the south. The two pyramids stand 600 feet high, with the four sides at their bases being about 500 yards in length.

A similar stone rubble pyramid, standing 600 feet high and with bases 500 yards in length, is near Rockhampton in northern Queensland. The entire structure is built of dolomite rubble. A series of long, hexagonal-shaped, pencil-like stone logs extend down the west face of the pyramid, and point outward. (Similar stone logs are used in the structures at Nan Madol on the Pacific island of Ponape.) Extending along the entire 500 foot length of the west base, there is a platform of rubble 100 feet wide and one foot in height. From this base, extending for 300 feet east to west, are 54 stone mounds in alignment, separated by only a few feet apart. This entire structure gives the appearance of an enormous pyramidal, astronomical formation.

Outside Toowoomba in southern Queensland, there are three earthen pyramidal structures which rise to a height of 1,000 feet and are over 3,000 feet in circumference. Similar structures have been found near Cooma and on the Murray River of southern New South Wales. Another has been found in northern Victoria. According to aboriginal folklore throughout Australia, the mysterious "culture-heroes" erected the pyramidal formations to study the movements of the heavens.

The aborigines also believe that the entire Australian continent is criss-crossed by paths of "natural energy" and that the pyramidal formations were built in alignments for the purpose of "trapping" these energy fields. This, they say, was also

(Continued on next page)

*Mr. Gilroy, an archaeologist and natural history consultant, is Director of the Mount York Natural History Museum, Mount Victoria, New South Wales. He is also Director of the Nature Display Museum in Kedumba Emporium, a tourist complex at Katoomba. Mr. Gilroy will be a principal speaker at the Seventh World Conference of the Ancient Astronaut Society in Auckland, New Zealand, July 10-12, 1980. He lives at Katoomba 2780, New South Wales, AUSTRALIA.

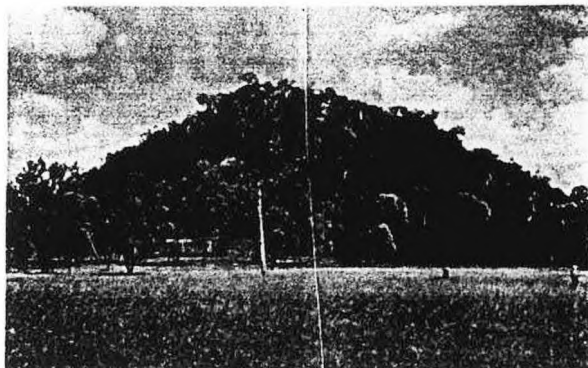
(Continued from previous page)
 the purpose of the many astronomical stone alignments and megalithic formations found in various parts of Australia.

One earthen pyramidal formation south of Sydney, Australia rises to a height of 200 feet, has a flat base, and according to local aboriginal folklore, the "culture-heroes" observed the stars at night from atop this formation. It is true that this structure offers an excellent view of the heavens in every direction.

A number of strange, stone "altars", carved in the forms of eagles and serpents, have been found in the Blue Mountains of New South Wales. Situated on cliff tops, these structures face east across a clear view. Since the aborigines are not known to have carved altar stones, it is believed that these stones were carved by a since vanished race.

Just recently, yet another pyramidal structure has been located in the Blue Mountain region, but it has not been sufficiently explored to give an account of it at this time.

The Australian pyramids and their often related stone formations and carvings in all certainty are the remains of some vast, hitherto unknown "lost civilization" which possessed a technology far in advance of anything known to mankind in later ages. Who they were remains a mystery; however, the aborigines know them as mighty "culture-heroes" and that their true home was among the stars.



ROCKHAMPTON PYRAMID



HEXAGONAL-SHAPED, PENCIL-LIKE STONE LOGS IN ROCKHAMPTON PYRAMID



AERIAL VIEW OF BRISBANE PYRAMID



MYSTERIOUS HUMAN FIGURE CARVED IN IRONSTONE. EXCAVATED IN 1966 NEAR BRISBANE PYRAMID.

All Photos are by the author.

FANTASTIC DISCOVERIES IN PERU, SOUTH AMERICA

On April 6, 1980, Dr. Eloy Linares Malaga, a well-known Peruvian archaeologist, made one of the most important archaeological finds in recent years. On board a Peruvian Air Force helicopter, Dr. Linares Malaga, heading an archaeological expedition, discovered numerous gigantic ground drawings on the pampas of Majes and Sihuas.

Similar to the drawings on the Plain of Nazca, also in Peru, these newly-discovered geoglyphs (earth carvings) represent a gigantic llama, a serpent, a herd of llamas, ten to fifteen concentric circles, and a geometrical figure typical of the pre-Inca cultures. They can be seen only from above.

The expedition also discovered the ruins of two citadels constructed of blocks of lava rock. One of the fortresses is located in the highlands of the Quishuarani and the other near Alto Vitor.

The group flew for five hours over the plains of Majes and Sihuas, which are scheduled to be irrigated for agricultural purposes. The areas are situated in the southern state of Arequipa, between the city of Arequipa and the Pacific coastal town of Camana. The site is about 200 miles south of Nazca.

Dr. Linares Malaga is Director of the Museum of the National University of San Augustin, in Arequipa and is Honorary Director of the city's Historical Museum. He cited the importance of the discovery and called for strong official measures to protect the drawings. He also called for the cooperation of scientists and archaeologists in conducting a thorough study of the drawings and the citadel ruins to determine their significance and antiquity.

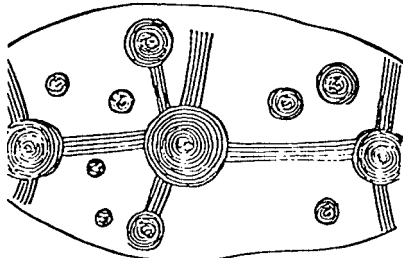
In 1951, Dr. Linares Malaga discovered numerous drawings of animals, plants and geometrical designs on lava rock at Toro Muerto, a province of Arequipa.

RHO SIGMA has clarified a misinterpretation of an abbreviation made by Rob Wold in his review of Sigma's book Ether Technology in Ancient Skies 6:6. Mr. Wold stated that Sigma was a "Senate" consultant when, in fact, he is a "Senior" consultant.

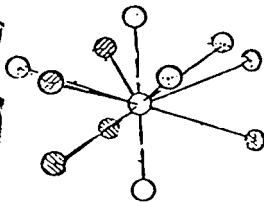
Sigma amplified that his attempts to interest high ranking officials in Washington resulted in "exactly zero." Sigma says that the only nation now seriously investigating UFO concepts is France, and that they are now planning to reexamine the 1955/56 experiments of T.T. Brown which proved that discs could operate efficiently in a hard vacuum. Rho Sigma warns that we are not running out of natural resources, but rather, we are running out of the freedom of innovation!

MORE ON THE CHURINGA

The Churinga which was originally published in Ancient Skies 4:5 reminds me of a two-dimensional representation of a three-dimensional crystal or molecular structure. These structure representations are frequently used in structural and x-ray crystallography. One such structure, for Na_3As , is shown in the accompanying diagram. In this diagram, the basic structural unit is shown by the atoms, represented by spheres, connected by solid lines. I think that the similarities between the churinga and the structural diagram are striking. If we had a complete picture of the churinga, we might be able to identify what compound it represents. Philip M. Jaffe, Ph.D., Professor of Chemistry, Oakton Community College, 7900 N. Nagle, Morton Grove, IL 60053 USA.



CHURINGA



MOLECULAR STRUCTURE FOR Na_3As

ROBIN COLLYNS, New Zealand author of Did Spacemen Colonise the Earth?, has announced publication of his latest book entitled Prehistoric Germ Warfare to be released in May by W.H. Allen & Co., 44 Hill St., London, England W1X 8LB. Mr. Collens has reported that he has an artifact which he believes to be six million years old and from another planet. The object, embedded in a sandstone rock, is a crimped 30mm diameter thin iron disc, with three embossed equidistant grooves. According to Collens, a leading New Zealand geologist who examined the object stated that it must have been impressed into the soft wet sand before it hardened - six million years ago.

GERARDO LEVET, Mexican engineer, has published his first book entitled Mision Vital en Planeta Tierra. The book is available in Spanish from the author at Apartado Postal No. 636, Naucalpan, Edo. de Mexico, MEXICO.

ZECHARIA SITCHIN, author of The Twelfth Planet was accorded the distinction of being invited to address a Select Committee of the House of Lords in London, England on March 11, 1980 concerning his researches and findings. Mr. Sitchin's book has been published in the United States and the United Kingdom and has been translated into German, Japanese, Spanish, Swedish and Dutch.

THE ARCHAEOLOGICAL SITE OF CERRO MASCARAS

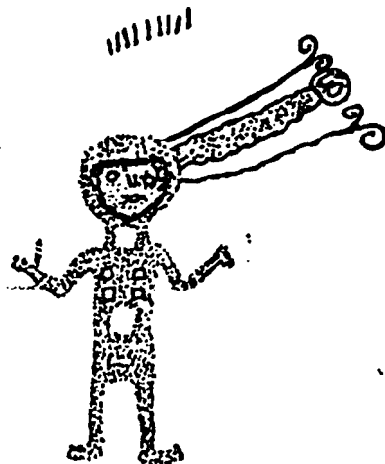
BY CARLOS A. BENEDETTO*

The province of Cordoba is the geographical center of the Republic of Argentina in South America. In the northeastern zone of the province in an area of the hacienda El Cercado, which is 30 km from St. Francisco del Chanar, many rock drawings can be found in the site called "Cerro Mascaras" (Hill of Masks). The site overlooks a countryside similar to the United States southwest in that it is now dry and shadeless, the natural forest having been destroyed for the manufacture of charcoal.

The archaeological site is divided into three main areas, all of which have stone drawings of great interest to scholars.

In 1951, the National University of Cordoba published a book by Luis R. Altamira called Cordoba, Its Painters and Paintings, which contains many sketches of the rock drawings of the Cerro Mascaras. The one shown in the accompanying illustration is of extreme interest to us.

Although the figure shown has been described by the traditional scientific investigators as representing a person of high rank with unusual vestments, it is now more commonly called the "astronaut." With our present technology it seems more plausible to view the figure as wearing a one-piece suit and a helmet with an opening to look through. The "antennae" could represent life support hoses and communication cords.



We must admit that it is an unusual figure.

In late 1978 a group of Argentinian scholars visited Cerro Mascaras to study the rock drawings only to find that in the short thirty years since the publication of Altamira's book the figure was almost obliterated. Only the head and "antennae" remain today. While infrared photography could possibly be used to view the entire sketch, the reproduction from the book is all we have now for study.

Thirty years ago the word "astronaut" did not exist in our vocabulary. Then, it was only logical to interpret the known sketches as representations of ceremonial costumes, or something similar. But now it is only logical to think that what appears to be a ceremonial garment could be something more closely related to technology than to religion. Our interpretations are necessarily subjective, rather than objective, because they reflect the ideology of our times, including the extraterrestrial theory which is the product of cosmovision, a very new human concept. It is possible that the drawings represent something entirely different that we have not yet learned about. Until we can prove the existence of extraterrestrials, of Atlantis and other lost civilizations and mysteries, we should resign ourselves to use our present knowledge for a better understanding of us as human beings.

*Mr. Benedetto is a history student who lives at Baigorria 2553-P.A., 1417 Buenos Aires, ARGENTINA.

IN SEARCH OF LAKE PETHÁ

In 1898, Teobert Maler, an Austrian archaeologist, set out from Tenosique, Mexico "for the exclusive purpose of rediscovering the long since forgotten Lake of Pethá." Crossing the Usumacinta River, Maler and his men proceeded westward to La Reforma for provisions, and then headed southeasterly into the dense rain forest, soaked with the heavy August rains. Three days later the party reached Las Tinieblas, the last outpost of a lumbering operation in the area.

Inquiries of the local natives as to the location of Lake Pethá proved fruitless, for none of the people had the least idea where the lake was.

In his account of the journey, Maler gives specific directions as to how the party proceeded, always in a southerly or southeasterly direction, crossing and recrossing the River Chocholhá and its tributaries, then swollen to flood stage. After several days' march through the rain forest, the region became wilder and more mountainous, but the party pushed on in spite of the drenching rain. In Maler's words:

"Finally we came to a small milpa established in the midst of the forest. This was the first sign that we were near an Indian settlement. The rain ceased. We proceeded cautiously. Descending the last declivity, suddenly a silvery expanse of water gleamed between the dark branches of the trees. A few steps further down, the path ended at the waters of the Lake of Pethá. We went promptly to work to erect a large champa close to the water, and also slung from tree to tree the hammocks which we had brought with us, and soon in grateful repose forgot the hardships of the day.

"I revelled in the enjoyment of the glorious panorama afforded by the lake, which here forms a large almost circular basin more than two kilometres in diameter. On the distant shore we saw quite a large waterfall plunging into the lake."

Finding two cayucos (small boats) which were hidden at the lake shore, Maler and his men quickly fashioned oars from tree branches and Maler rowed on the lake for the first time. The next day he undertook a thorough exploration of the lake in all directions. Maler describes the lake as follows:

"The entire length of the lake from the eastern margin of its large round basin to the extreme end of its western ramifications we estimated at six to seven kilometres. The diameter of the round basin, to which its name Pet-há (agua circular) refers, may be two kilometres, while the width of the western arms varies from two hundred to four hundred metres. We found the water of such great depth everywhere that steamships could easily sail on this lake, probably even in the dry season, when the water doubtless falls about five metres.

"Returning from the southwest arm, we skirted the southern shore and the inlets on that side, and came to an exceedingly beautiful southern passage, which led back to the main or large eastern basin. Along this passage - on our left as we passed through - we saw great cliffs rising perpendicularly from the water. These we investigated in the hope of finding pictorial representations, and to our great joy we discovered three separate large pictures..." Maler dubbed the cliffs the Rocas de las Pinturas (picture-rocks) and proceeded to investigate the area in detail during the following days.

In 1979, a proposed Ancient Astronaut Society Member Expedition to Lake Pethá was aborted. No one had ever heard of Lake Pethá. It was lost again!

During the last few months a diligent effort has been underway to locate the lake. Enlisting the aid of Society Member Enrique Burmeister, Director General of ABC Travel Service, S.A. in Mexico City, we began our search for the elusive body of water, deep enough to sail steamships, over six kilometres long, and only six leagues from the Chocholhá River. Sr. Burmeister contacted his friend, Trudy Blom, widow of Franz Blom the famous archae-

ologist-explorer who spent the last years of his life in Mexico, mapping the entire State of Chiapas, where the lake is supposed to be. Mrs. Blom graciously responded with a copy of a detailed map which her husband had produced, but informed Sr. Burmeister that she had never heard of a lake in the region by the name of Pethá. Sure enough, when we examined Franz Blom's map, Lake Pethá was nowhere to be found.

Using Blom's map and following the precise directions given by Maler, we began at Tenosique, crossed the Usumacinta, and proceeded to La Reforma, on paper of course. We traced Maler's route southeasterly, crossed and recrossed the River Chocholhá and its tributaries, and with our metric ruler finally arrived at a Lacandon Indian area with several lakes, any one of which seemed to fit Maler's description. Reading and rereading Maler's directions, we finally realized that we had not proceeded far enough towards the east. One of our difficulties was that many of the place names mentioned by Maler were not on the map, probably because the places no longer existed, or they had new names. Finally, we read that when Maler left Lake Pethá, he proceeded easterly towards Chicozapote, "a settlement midway between El Chile and Anaite." There it was! A large lake with a circular basin and with arms extending to other basins. Our ruler confirmed its length at about six kilometres. But, this lake is called "Santa Clara."

Suspecting that the Indian name had given way to the Spanish, we continued our search in the library and were finally rewarded when we found a map which the famous explorer, John Lloyd Stephens had produced in 1839-40 when he and Frederick Catherwood travelled into Chiapas from Guatemala to the south on their way to the ruins of Palenque. The Stephens map confirms that Lake Santa Clara and Lake Pethá are one and the same. The mystery was solved. Now we must make the journey in person.

Working with Enrique Burmeister, we have planned a Member Expedition to explore Lake Pethá to try to find and photograph the picture-rocks Maler described. Our group will depart Chicago on February 28, 1981 for Mexico City to overnight, then on to Villahermosa. There we will visit the excellent Maya Tabasco Museum and the unique outdoor museum of LaVenta, before proceeding overland to Palenque.

We will spend a full day among the mysterious ruins of Palenque, nestled in the foot hills on the edge of the rain forest, and then, in small planes, fly southeasterly to Bonampak, site of the famous Mayan murals and then to the ruins of Yaxchilan, on the edge of the River Usumacinta.

From Yaxchilan we plan to fly by small plane to Lake Santa Clara (Pethá) where we will camp out and spend two full days exploring the lake and, hopefully, rediscovering the Rocas de las Pinturas.

We will follow in Maler's footsteps to Chicozapote, where we will board river boats and proceed down the Usumacinta to examine the ruins at Piedras Negras. There we will be picked up (hopefully) by small planes and returned to Palenque, and then on to Villahermosa by bus. Our group will then fly to Oaxaca and visit the ruins of Monte Alban, Mitla and Zaachila and then proceed to Puerto Escondido on the Pacific Ocean, for two days of rest and relaxation. On the return, we will have a free day in Mexico City to visit the world-famous Museum of Anthropology, or to examine the ruins at Tula, or to visit the pyramids at Teotihuacan.

The group will return to Chicago on March 15. Anyone wishing to participate in this most unusual adventure should contact the Society headquarters as soon as possible.

ANCIENT SKIES is published bi-monthly by the ANCIENT ASTRONAUT SOCIETY, a not-for-profit, tax-exempt corporation founded in 1973 exclusively for scientific, literary and educational purposes.