

ANCIENT SKIES

"Come Search With Us!"

Official Logbook of the Ancient Astronaut Society

(C) COPYRIGHT 1975 ANCIENT ASTRONAUT SOCIETY - ALL RIGHTS RESERVED

VOLUME 2, NUMBER 1

MARCH-APRIL, 1975

GIZA: EXTRATERRESTRIAL FOCAL POINT?

by STUART W. GREENWOOD*

Giza is the site of the pinnacle of architectural achievement in the ancient world. The pyramids of Cheops, Chephren and Mycerinus, together with the Great Sphinx, still stand as permanent monuments to an astonishing level of cultural and technological attainment, dating back to 2,500 B.C. according to the consensus of archeological judgment.

To establish some perspective in our appreciation of the distinctive nature of these monuments we need to recognize that these works were constructed at a time more distant from the life of Christ than we are today. In our attempts at assessing the possibility that man was directly affected by extraterrestrial intervention in early times, are there any features of the monuments at Giza that serve to enlighten our studies?

The pyramids are closely aligned with their base lines in the N-S, W-E directions respectively. The pyramid of Cheops (or Great Pyramid) has an alignment that corresponds within a few minutes of arc (1). The Great Sphinx "gazes toward the eastern horizon, where the gods were thought to dwell" (2). The Giza complex is shown in Fig. 1, and the astronomical significance of the alignments is evident.

Giza lies within one minute of latitude 30° , almost exactly a third of the distance from the Equator to the North Pole. It is situated at the apex of the Nile Delta across the Nile from the ancient center for Sun-worship, Heliopolis, and close to the modern city of Cairo. It is a part of the matrix of centers of early civilization that flowered around the Eastern end of the Mediterranean,

Figure 1

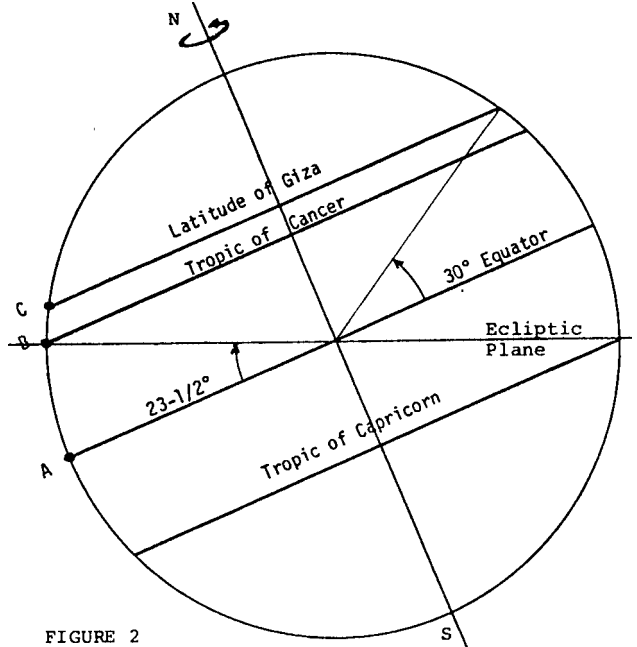
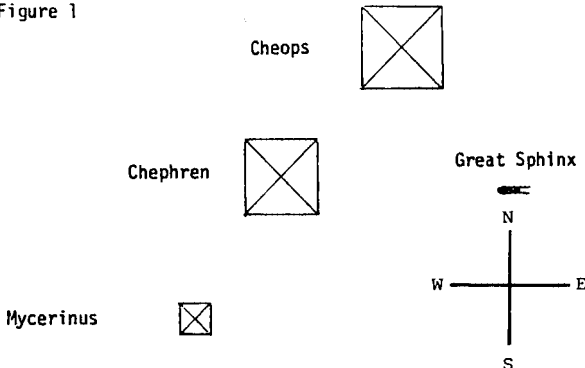


FIGURE 2

the Red Sea and the Persian Gulf. It is unquestionably a focal point of ancient civilization. There is unquestionable astronomical significance in the alignment of its awesome structures, whether or not such significance was a prime consideration in their design. We now search for any possible astronomical significance in the context of the ancient astronaut hypothesis.

The Earth spins about its axis in the W-E direction (Fig. 2). The maximum launch assist from this effect would be available at a point on the Equator, as at A. For flights between planets in our Solar System, however, the transfer plane will lie close to the Ecliptic Plane, the plane of the Earth's orbit around the Sun, so a launch site on one of the tropics would be preferred. Once each day, any point on either of the tropics (at latitudes $23\frac{1}{2}^\circ$) will touch the Ecliptic plane, as at B, and this corresponds to a preferred launch opportunity. The rotational speed of the Earth at the tropics is only 8% lower than that at the Equator, and the gravitational fields of the Earth and the Sun are suitably oriented for transfer in the Ecliptic Plane.

The launch site at Cape Canaveral is situated at a latitude of $28\frac{1}{2}^\circ$, just N of the Tropic of Cancer. For such modest (Continued on next page)

* Mr. Greenwood is a Doctoral Candidate in Aerospace Engineering at the University of Maryland.

(continued from first page) departures from the latitudes of the tropics the launch energy requirement is not seriously increased. Giza, at latitude 30°, corresponds to a velocity contribution from the Earth's spin only 13% less than that provided at the Equator. There is, of course, a progressive mismatch between the gravitational fields of the Earth and the Sun for launches progressively distant from the tropics. Nevertheless, for energy-limited vehicles operating to and from the nearest planets of the Solar System, Giza is a relatively attractive location for a space center.

A launch from Giza would preferably take place when the site was at C in Fig. 2. The launch would be in the W-E direction to take advantage of the Earth's spin. The Great Sphinx faces in that direction and its eyes are directed toward, or evidently just above, the Eastern horizon. That is "where the gods were thought to dwell." The myth, if that is all it is, is compatible with the possibility that ancient astronauts departed from Giza on comparatively flat trajectories of departure over the Eastern horizon on return voyages to their home planet in the Solar System.

We are engaged in the realm of reasoned speculation and need to recognize that any or all of our suggestions may have to be revised in the future. However, with this proviso, we proceed with our adventure and enquire what type of vehicle is implied by our deductions. A space vehicle with a flat trajectory of departure might well possess many of the characteristics of an aircraft at take-off - in other words it would employ wings for lift. To the ancient it may well have appeared to be a mechanical bird.

The legend of the Phoenix includes some remarkably suggestive features. Only one existed at any time, suggesting a machine rather than a species. Its time of arrival was a matter for dispute at Heliopolis, the center for Sun-worship, but it was supposed to visit every 500 years. As the end of its life approached, the Phoenix constructed a nest, set itself on fire, and was consumed. A new Phoenix miraculously emerged from the pyre.

The nest may be interpreted as a specially prepared launch site, and the pyre as the exhaust glare at launch. As a winged vehicle bound for one of the nearer planets it departed over the Eastern horizon. The machine, or its replacement, then returned to continue contact through the priests at Heliopolis.

- (1) I.E.S. Edwards, "The Pyramids of Egypt," Penguin Edition, 1961.
- (2) Gerald S. Hawkins, "Celestial Clues to Egyptian Riddles," Natural History, April, 1974.

THE PLUMED SERPENT - By Stuart W. Greenwood

Quetzalcoatl, whose name signifies "Plumed Serpent," was the god of ancient Mexico symbolizing wisdom and knowledge. He was the god of life and fertility, inventor of agricultural processes, patron of arts and industries and originator of the calendar. He was also the god of the wind and the dawn, identified with the planet Venus, the light, and the color white (1). Small wonder that many writers on the ancient astronaut hypothesis, among whom we will particularly note W. Raymond Drake for his detailed reflections (2), have considered the interpretation that the god was an astronaut.

The present writer has examined the suitability of underwater bases for extraterrestrials from Venus in an article published by the International Forfean Organization (3). The pressure at a depth of around 500 fathoms, or 3000 feet, corresponds to that at the surface of Venus, which has a very dense atmosphere. The most extensive region of ocean floor at such depths is to be found in the Straits of Florida, the Southern portion of the Blake Plateau and the Tongue of the Ocean in the

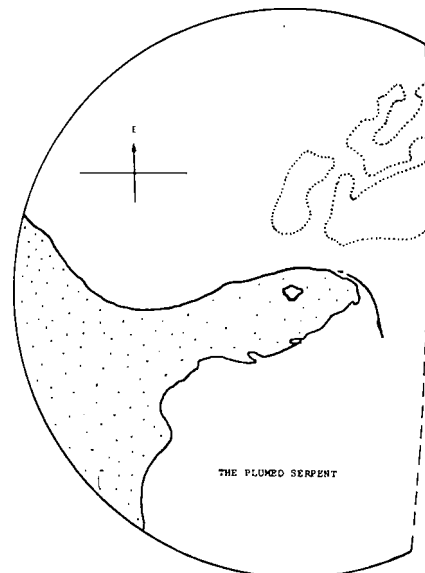
Bahama Banks. The location of this region near the Tropic of Cancer is suited to the operation of energy-limited vehicles travelling from Earth to other planets in our Solar System (hence the nearby location of Cape Canaveral in Florida).

Approaching the postulated underwater base location from the West, to take advantage of the Earth's West-East rotation to ease the atmospheric entry problem, one would have a view similar to that shown in the accompanying illustration. We are so accustomed to looking at maps with North at the top that a moment's adjustment is required to appreciate that a map with East at the top has perfectly equal validity. The illustration has been drawn for a view centered on Lake Okechobee in Florida. Above (and therefore ahead of us) we see the Bahama Banks. The arc of the circle to the left gives us the limit of our field of view (500 miles) from an arbitrarily selected height of 32 miles over the Lake. The dashed line to the right is the Tropic of Cancer. The 500 mile circle, and thus the field of view, continues on around the Tropic.

Florida and other portions of the South-Eastern United States are featured conspicuously in the panorama below. The outline resembles a winged, or plumed, serpent. The Lake resembles the eye of the serpent, the Florida Keys the tongue, and the grouping of Keys toward Key West at the tip resemble the fangs. The spreading coastline from the Northern part of Florida, together with the limit of our field of view, supplies the outline of the wings. The lush green foliage of the area corresponds to the brilliant green upper coloring of the plumage of a bird known as the Quetzal.

The first light of dawn is seen in the East, and we may infer that it was from the East that Quetzalcoatl came to Mexico. We can account for the mysteries that have long surrounded his name and his association with Venus and the dawn by postulating that his name is taken from the appearance of the most conspicuous land area seen toward the end of his descent following his voyage from Venus and that he then arrived in Mexico having travelled from his base in the Bahama region.

- (1) "Quetzalcoatl," entry in Encyclopedia Britannica, Vol. 18, 1972, p. 961.
- (2) W. Raymond Drake, "Gods and Spacemen in the Ancient West," Signet Books, 1974, Chapter 9.
- (3) Stuart W. Greenwood, "Extraterrestrials and the Tropical Zones," The INFO Journal, May, 1974, pp. 19-21.



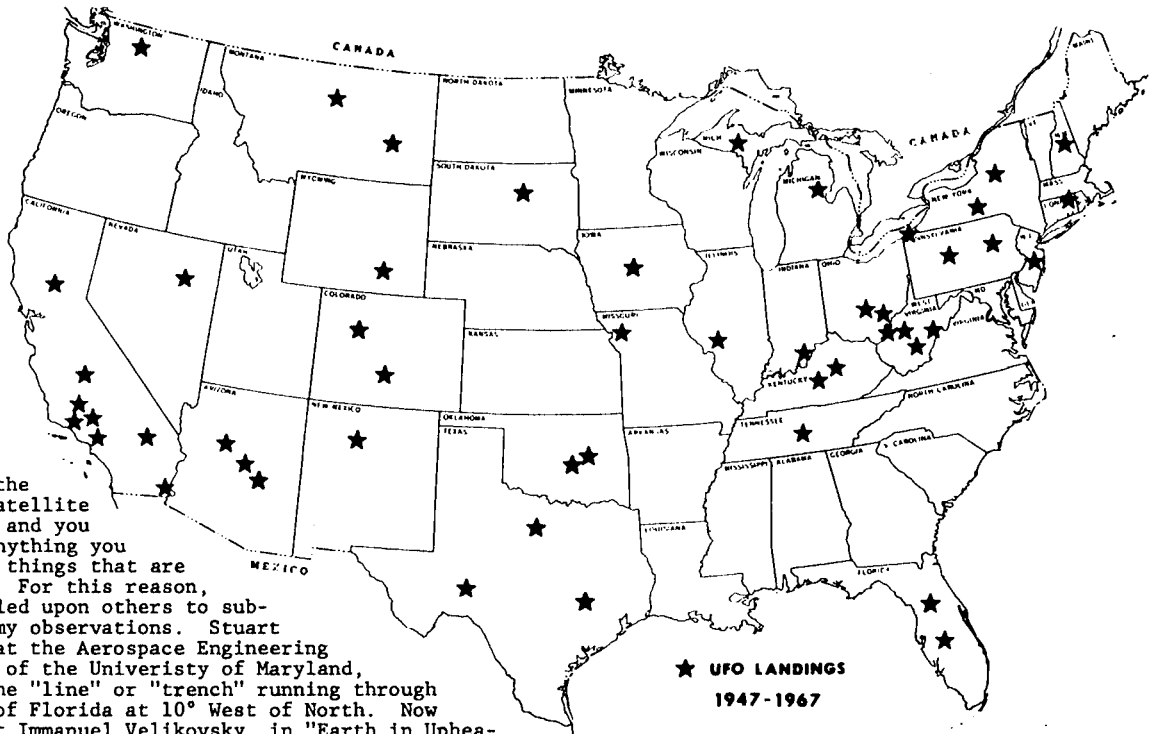
THINGS FROM THE SKIES

By JAMES A. GUPTON, JR.

Look long enough at the Nimbus V satellite photograph and you can find anything you want, even things that are not there. For this reason, I have called upon others to substantiate my observations. Stuart Greenwood at the Aerospace Engineering Department of the University of Maryland, oriented the "line" or "trench" running through the state of Florida at 10° West of North. Now I find that Immanuel Velikovsky, in "Earth in Upheaval," discusses meteor falls from New Jersey to Florida that followed the NW to SE path similar to that of the "trench".

North Carolina's myriad of coastal bays, some of which measure from 2000 feet to more than 8000 feet across, have also been attributed to meteors. All these craters remain show the same characteristic oval shape, with a NW orientation of the axis of the oval and all have elevated rims of earth, invariably raised at the SE end. This is precisely the configuration of the two craters shown in the Nimbus V satellite photograph on the East coast of Florida, north of Miami (Fig. 2). If these craters were formed from meteor impact, they would be the largest meteorite craters discovered thus far, measuring 18 and 24 miles in diameter. The 1974 World Almanac lists a 2 mile wide crater in New Quebec, Canada as the largest.

Assuming all the meteorite activity in the region, it seems logical to conclude that the "trench" was formed by a giant meteor which grazed the surface of Florida, then bounded upward from the earth

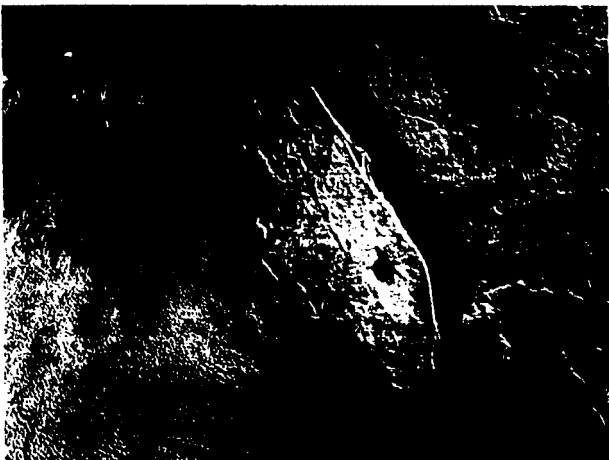


★ UFO LANDINGS
1947-1967

buildup formed at the SE terminus of the "trench". Lawrence Blazey of Cleveland, Ohio, became another contributor to our knowledge concerning the Nimbus V Satellite landmarks of Florida when he sent me several maps that showed landing sites of the most recent aerial phenomenon...the UFOs. The only known landings in Florida seem to coincide with the "trench" and even more so, with the two underground "rectangles," or "cold spots," shown near the end of the "trench".

Interestingly, these "rectangles" are the only two places in Florida where "Angel Hair" has been found. "Angel Hair" is an extremely fine "hair-like" filament usually found in trees and on the ground where UFO landings have been reported.

If you would like to add your "two-cents worth" to try to explain the Florida landmarks, I will be happy to coordinate. Send your opinions to 132 Clubhouse Drive, Apt. #70, Roanoke, VA 24019.



Nimbus V Satellite Photograph

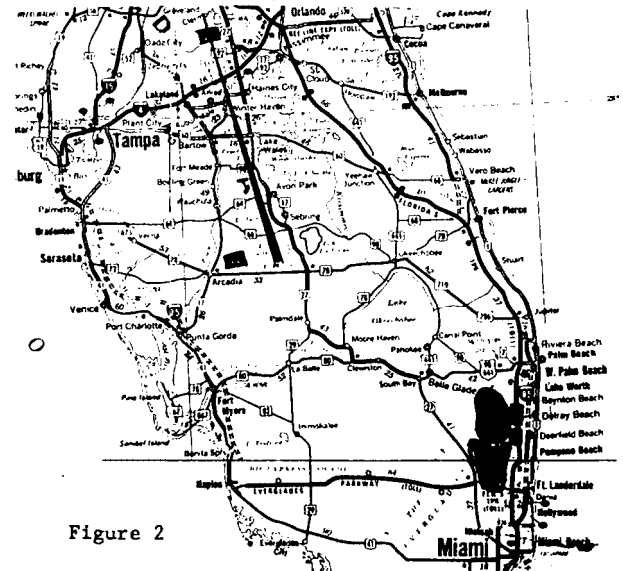


Figure 2

AUTHORS AND BOOKS

SUBJECTS OF ORIGINAL PAPERS TO BE PRESENTED AT SECOND WORLD CONFERENCE IN ZURICH - MAY 1975:

Scientists versus the ancient astronaut theme.
Travels in Time - Man conquers time and space.
A rotary engine based on a Mayan text.
Spaceman in antiquity.
Time equals zero.
Importance of speed of light in space flights.
Logical status of the ancient astronaut theory.
Our legacy from the starborn.
Religion and ancient astronauts.
The Colossi of Tula.
The need for evidence.
The Great Pyramid.
Temples of the past are technical libraries.
High level technologies of the past.
Cultural ruins between the Himalaya and the Alps.
Ezekiel's encounters with space ships.
Mankind - Child of the Stars.
Where are we misunderstood?

C. LORD AMERY, author and lecturer of Hempstead, England, has a new book soon to be released in England called "The Secret of the Sphinx," which predicts that important archaeological finds will be made in July, 1975 in the vicinity of the Great Pyramid and the Sphinx. According to Mr. Amery, the space colony of Atlantis buried relics in the area before the Great Flood, which include a spaceship!

Mr. Amery is planning a lecture tour in the United States this fall.

OUR MEMBERS RECOMMEND:

COSMIC MYSTERIES OF THE UNIVERSE - Adrian V. Clark
WE ARE NOT ALONE - Walter Sullivan
GODS FROM THE FAR EAST - Henriette Mertz
THE QUEST FOR NOAH'S ARK - John H. Montgomery
OMBRE SULLE STELLE (Italy) - Peter Kolosimo
UFO & THE BIBLE - M. K. Jessup
THE SAUCERS SPEAK - Hunt Williamson
INSIDE THE FLYING SAUCERS - George Adamski
ANATOMY OF A PHENOMENON - Jacques Vallee
CAVES OF THE ANCIENTS - T. Lobsang Rampa
PLANET IN TROUBLE - Jerome Eden
WILHELM REICH - James Wyckoff

HARDCOVER BOOKS:

IN SEARCH OF ANCIENT GODS - Erich von Daniken
BEYOND STONEHENGE - Gerald S. Hawkins
EXPLORING THE UNKNOWN - Sharon S. McKern
MYSTERIOUS PLACES - Daniel Cohen
SECRETS OF THE GREAT PYRAMID - Peter Tompkins
THE BERMUDA TRIANGLE - Charles Berlitz
MAN AND THE STARS - Duncan Lunan
MYSTERIES OF TIME AND SPACE - Brad Steiger
EXTRATERRESTRIAL INTERVENTION - Jacques Bergier
DID SPACEMEN COLONIZE THE EARTH? - Robin Collyns

ANCIENT SKIES is published bi-monthly by the ANCIENT ASTRONAUT SOCIETY, 600 Talcott Rd., Park Ridge, Illinois 60068, for distribution to its members. Telephone (312) 696-2016.

The Ancient Astronaut Society, founded in 1973, is a tax-exempt, not-for-profit corporation organized exclusively for scientific, literary and educational purposes.

PAPERBACK BOOKS:

CHARIOTS OF THE GODS? - Erich von Daniken
GODS FROM OUTER SPACE - Erich von Daniken
THE GOLD OF THE GODS - Erich von Daniken
WE ARE NOT THE FIRST - Andrew Tomas
THE HOME OF THE GODS - Andrew Tomas
MYSTERIES FROM FORGOTTEN WORLDS - Charles Berlitz
LIMBO OF THE LOST GODS AND DEVILS FROM OUTER SPACE - John Wallace Spencer
OUR HAUNTED PLANET - Eric Norman
INVISIBLE HORIZONS - John A. Keel
INVISIBLE RESIDENTS - Vincent Gaddis
THE COMING OF THE GODS - Ivan T. Sanderson
THOSE GODS WHO MADE HEAVEN AND EARTH - Jean Sendy
STRANGER THAN SCIENCE - Frank Edwards
STRANGE WORLD - Frank Edwards
THE LATE GREAT PLANET EARTH - Hal Lindsey
THE RA EXPEDITIONS - Thor Heyerdahl
GODS AND SPACEMEN (EAST) - W. Raymond Drake
GODS AND SPACEMEN (WEST) - W. Raymond Drake
ANCIENTS SECRETS OF MYSTERIOUS AMERICA - W. Raymond Drake
PONAPE - Silbey S. Morrill
EARTH IN UPHEAVAL - Immanuel Velikovsky
WORLDS IN COLLISION - Immanuel Velikovsky
THE SPACESHIPS OF EZEKIEL - Josef F. Blumrich
FORGOTTEN WORLDS - Robert Charroux
THE GODS UNKNOWN - Robert Charroux
ONE HUNDRED THOUSAND YEARS (etc.) - Robert Charroux
TEMPLE OF THE STARS - Brinsley LePoer Trench
THE SKY PEOPLE - Brinsley LePoer Trench
THE MORNING OF THE MAGICIANS - Pauwels and Bergier
IMPOSSIBLE POSSIBILITIES - Pauwels and Bergier
THE ETERNAL MAN - Pauwels and Bergier
THE CRYSTAL SKULL - Richard Garvin
IN SEARCH OF THE MAYA - Robert L. Brunhouse
ATLANTIS RISING - Brad Steiger
NOT OF THIS WORLD - Peter Kolosimo
NOAH'S ARK: I TOUCHED IT - F. Navarra
BERMUDA TRIANGLE - A.T. Jeffrey
MYSTERIES OF ANCIENT S.A. - Harold T. Wilkins
RAGNOROK - Ignatius Donnelly
IN SEARCH OF ANCIENT MYS. - Alan Landsburg
LEGACY OF THE GODS - Robert Charroux
COLONY: EARTH - Richard E. Mooney
THE DEVIL'S TRIANGLE - Richard Winer
UFOLGY - James McCampbell
EXTRA-TERRESTRIAL VISIT. - Jacques Bergier
THE BOOK OF THE DAMNED LO! - Charles Fort
WILD TALENTS - Charles Fort
NEW LANDS - Charles Fort
WHISPERS FROM SPACE - John W. MacVey
FENG-SHUI - E.J. Eitel
IS ANYONE OUT THERE? - Jack Steeley
SUPERNATURE - Lyall Watson
MAN INTO SUPERMAN - R.C.W. Ettinger
LOST ATLANTIS - James Bramwell
MANKIND - CHILD OF THE STARS - Flindt and Binder
MASTERS OF THE WORLD - Robert Charroux
GODS AND SPACEMEN (PAST) - W. Raymond Drake
ALIENS FROM SPACE - Major Donald E. Keyhoe
THE GREAT PYRAMID: A MIRACLE IN STONE - Joseph A. Seiss, D.D.
THE VIEW OVER ATLANTIS - John Mitchell
PSYCHIC DISCOVERIES BEHIND THE IRON CURTAIN - Ostrander and Schroeder
THE DRAGON AND THE DISC - F.W. Holiday
THE UFO EXPERIENCE - J. Allen Hynek
THE NEW UFO SIGHTINGS - McWane and Graham
LEGEND OF SONS OF GOD - T.C. Lethbridge
TIMELESS EARTH - Peter Kolosimo