

AMERICAN ASTROLOGY

MAGAZINE

Your Daily Guide

MAY
1934



25¢



WORLD CONDITIONS

by the editor

PAUL G. CLANCY



AMERICAN ASTROLOGY

PERSONAL SERVICE DEPARTMENT

For those who desire a more Individual Analysis than that obtainable
through our regular magazine services



A CHARACTER DELINEATION

Which reveals your basic tendencies in Marriage, Vocation,
Health, Business, etc.

\$10.00



DETAILED FORECAST FOR THREE YEARS

\$10.00



CONSULTATION SERVICE

By Personal Interview or by Mail. A Detailed Specialized Study of

YOUR PERSONAL PROBLEM

To assist you in making wise decisions. Full particulars upon application



*All work Positively Individual and done by or under the
Personal Supervision of*

Paul G. Clancy

Send

Year, Date, Hour and Place of Birth
(also mother's birthdate)



AMERICAN ASTROLOGY

1472 BROADWAY

NEW YORK, N. Y.

(YOUR DAILY GUIDE)

Law to the problems of everyday life.

•

MAY, 1934

NUMBER 3

Edited by

CONTENTS

Page

All unsigned articles are by the Editor

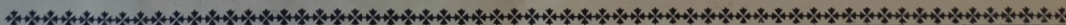
for the return of unsolicited manuscripts.

Copyright, 1934

By CLANCY PUBLICATIONS, INC.

Telephone, BRyant 9-7749

*Address all communications to—*Clancy Publications, Inc., 1472 Broadway, New York, N. Y.



To Neptune

"Poets see with the eyes of childhood."
Daudet.

Let me not lose too soon my childhood eyes
And go unseeing in the crowded ways,
No longer in great wonder and amaze,
No longer treading where the starlight lies.
I would not give up beauty to be wise
And grow unmindful of the April days,
Peach-bud in bloom, a blue-bird's rapturous lays,
A crescent moon at twilight in the skies.

Keep simple, heart of mine, quick moved to tears,
Trustful of men, not filled with great desire,
Going the way the faithful ones have trod,
Or as a young lamb fares upon the meres,
Not burning with the world's embattled fire,
But humble when I go to meet my God.

BLANCHE SHOEMAKER WAGSTAFF.



The Planets

As Symbols Of Psychological Functions

By DANE RUDHYAR

INTRODUCTION

From the point of view of harmonic astrology, astrology can be said to be the algebra of life. It presents a type of symbolism which enables us to interpret *the pattern of organization of functional parts within an organic whole*. This definition is important and has far-reaching implications. Without discussing it in detail we shall see at once that astrological symbolism applies whenever an organic whole is to be found. We would refer our interested readers to the work of General Smuts on "Holism" as well as to books on *Gestalt* psychology; also to the first part of a wonderful book by M. P. Follett "The New State".

To speak of "whole" implies the recognition of a certain type of organization of the elements which are constituent parts of this whole. The most evident wholes are naturally life-entities biological organisms which have not only the power of maintaining their own structural form but of reproducing themselves. But the term can be applied as well to psychological formations, or even to those mental formations which we call "ideas". The solar system is also a whole, possibly a real cosmic organism.

The idea back of an astrological philosophy is that in all truly organized wholes a few definite principles of organization operate within the whole as "functions"—biological, physiological, psychological, even ideological, functions, as the case may be. These abstract principles become organic functions when in contact and operating through substance of one or the other type. Their modes of operation change as the type of density of the substance they organize also changes. The principle of form-building through differentiation works out just as well in the building of an embryo, as in the development of an individual ego, or in the delineation and formulation of an idea. It is the same principle acting upon different types of substance.

Astrology calls this principle, or function, Saturn. But only the archaically minded astrologer will literally believe that the physical planet Saturn "rules" over such a function. In spite of the possibility that planets might have to be considered as centers of magnetic or electrical radiations affecting our earth (or as transformers of solar or stellar energies), the fact remains that even if this

were true one would not be able to understand how much radiations would produce certain individual tendencies in certain persons, and still less how the principle of astrological progressions could work; not even to mention the still more puzzling case of horary astrology.

The Planets, as a group, are symbols of the ever-changing patterning of life-functions. We see something of the same order when we come to the new science of endocrinology—the science that deals with endocrine glands and their effects upon the organic functions within the bodies of men and animals. We find in the body a chain of some eight major glands which normally constitute a definite chord of influences. Each gland secretes its hormones which in turn control the growth, metabolism, reproduction,—in fact all the functions of the body.

Some of these glands are very active in childhood and others during maturity. Development of the ones checks the growth of the others. We find most of these glands paired in their action. One works in just the opposite way from another. If the one increases its operation, the other reduces its function. The organism as a whole appears as a wonderful self-compensating system in a state of dynamic equilibrium. The same is true of our psyche, or psycho-mental organism, if we believe the findings of C. G. Jung. What astrology presents to us is a sort of X-Ray picture, or diagrammatic chart, of the way in which this self-compensating system works in all manifestations of organic wholeness on earth and throughout the years.

We can say this also in another way. At every moment of time and at every point of space the organizing activities of "Life" operate in a definite manner upon every "whole", or every group of elements seeking to become a whole. The pattern formed by all celestial bodies around this point of space can be interpreted as revealing the mode of operation of these organizing activities of "Life". Every celestial body in that pattern can be interpreted as symbolizing one definite organizing activity on any level or plane of substance considered. The pattern must however be considered not only in space but also in time. The zodiac is a unit because of the constant cycle of revolution of the earth around the sun. Position in space must

always be considered together with cycle in time. Thus astrology deals with time-space elements. Orbits are as important as planets revolving along these elliptical paths around the sun. In a sense, the characteristics of orbits are the best symptoms of the function symbolized by the planets; so that in the case of a newly discovered planet like Pluto, one can easily gather from data concerning its orbit the main significance of Pluto within the planetary pattern of the solar system as a whole.

One can never insist enough upon these preceding considerations: for without keeping them in mind, as a background, everything astrological becomes chaotic and unsatisfactory to the rational mind. In other words, it remains a primitive superstition and a fortune-telling device. In terms of these same considerations it is easy to see where the basic problem lies in astrology. It lies in the formulation of the "organizing activities of Life" in such a fundamental and universal way as to make that formulation true at all levels.

To say that Jupiter is the "greater fortune" or that it represents wealth and social rank does not apply at all levels. It has no special meaning in medical astrology, where Jupiter can be the symbol of quite unfortunate biological action. Spiritually speaking, its connotation may be that of poverty rather than of wealth as far as the social plane is considered. But if you speak of Jupiter as the power of expansion inherent in every type of circulating medium within an organic whole, or as the symbol of operative wholeness—then such a formulation will hold at all levels and for all types of substance. In medical astrology it will relate to the blood-circulation, to the solar plexus, which controls the sympathetic system expansive action, to the lumbar region that controls the act of walking (expansion of our field of action). In social astrology it will refer to money the medium of exchange and social expansion. Spiritually speaking, it is together with Saturn, the "guru" or spiritual teacher—or else the driving power of religion which makes us expand our viewpoint. Psychologically, it is the function through the operation of which the limited ego expands into the realm of the collective unconscious and becomes as it were the great Self. Thus, in whatever phase of life we may try to interpret and analyze, Jupiter stands as the symbol of expansion, as the operation of the principle of wholeness, or integration, within any whole. Through the Jupiter function we encompass more (compassion), and we integrate that which we have already encompassed—providing that Saturn function has also done its work, adding bone and structure to our expanded growth.

In what will now follow I shall restrict myself to the psychological level of interpreta-

tion, which is more specifically that covered by Harmonic Astrology. Very little has really been done to bring astrology to the level reached by modern psychology, and I hope to stimulate a deeper understanding of astrological symbols by applying them to what seems to me the broadest and most vital type of contemporary psychology, that of which C. G. Jung is the originator or at least the greatest exponent. In this and the following article I shall study the astrological planets in terms closely allied to those of Jung's analytical psychology; and while I shall try to explain the meaning of the psychological terms I use, I would ask the reader who is really eager to fathom this type of interpretation to study Jung's book "Psychological Types" and especially the last part of it where extensive definitions are given. "Two Essays on Analytical Psychology" is another book, which could be read with great benefit in this connection.

ASTRO-PSYCHOLOGY

The first classification necessary as one approaches the field of astro-psychology is that of conscious and unconscious. This division of our psycho-mental life is basic in all forms of psychology which are not restricted to the observation of mere behavior through scientific experiments. Even in the materialistic psychology featured in American universities one would have to distinguish between conscious and unconscious actions and reactions. But it was Freud who, through dream-analysis, brought out the unconscious as a psychological factor of capital importance. Unfortunately Freud's pathological and sexual bias has forbidden him to reach a clear perception of the nature of the unconscious. In Alder's psychology the unconscious plays but a small part. It was Jung, the great Swiss psychologist, who approached the problem of the unconscious in a satisfactory manner, and made the capital distinction between the personal unconscious and the collective unconscious.

Under the term unconscious must be classified "all those psychic contents or processes which are not conscious, i.e. not related to the ego in a perceptible way". By "psychic contents" are meant all the thoughts, feelings, intuitions, sensations which constitute or are parts of the "psyche"—or in ordinary parlance, of the mind and soul. By "ego" is meant that inner realization of "I am this and that". It is referred to often as "ego-complex" as it is not (apparently) a simple something, but is "a complex of representations which constitutes the center of my field of consciousness and appears to possess a very high degree of continuity and identity".

The *personal* unconscious "embraces all the acquisitions of the personal existence—hence the forgotten, the repressed, the subliminally perceived, thought and felt". The *collective* unconscious embraces those images, motives and realizations which belong not to the in-

dividual as such but to the racial collectivity, to humanity as a whole. It refers to primordial truths or ideas found in all climes and ages—which are more or less instinctual in man. These images and impulses from the collective unconscious are the foundations of mythologies and of those philosophies and arts which are rooted in the universal and not merely the products of individual idiosyncrasies. Jung refrains carefully from speculating as to the nature of this collective unconscious; but not being bound to a “scientific” approach, I shall not hesitate to consider it also from a mere “esoteric” standpoint as occasion requires.

Coming back now to the planets used in astrological symbolism I shall divide them into two groups:

Planets referring
to the Conscious: { Saturn-Moon
Jupiter-Mercury
Mars-Venus

Planets referring
to the Unconscious: { Uranus
Neptune
Pluto } Fixed Stars

to which I shall add:

Symbols referring { Sun—Chart-quadrature
to the Self: { The planetary pattern as a whole

This last item demands an immediate explanation as it evidently will be a puzzle to most readers. According to Jung we must discriminate between ego and Self, the ego being only the subject of a man's consciousness, while the Self is the subject of his whole psyche, both conscious and unconscious. In occult literature the distinction is made between the personal self and the greater Self. Astrology must obviously discriminate strongly between the Sun, which gives light and life, and the other planets which are only reflectors or transmitters of light. The Sun represents therefore the energy of the Self, the power which aims at constantly integrating the two opposite polarities of being; spirit and matter. It is the life-energy as it vitalizes and integrates both the inner nature and the physical organism of man.

But if the Sun represents the psychic energy which animates both the conscious and the unconscious, there is more to the Self than *energy*. The Self includes also the element of *form*. The Self is both the cause and the result of all the functions of the psyche. In a seed, there is not only potential vitality but an archetypal pattern of development. The acorn contains in some mysterious way the pattern of the full grown oak. Likewise I consider the Self as a seed containing before birth the racial and individual pattern of the human being as a whole. As the individual psyche grows, the Self that was a potential patterning becomes a sum-total of actual psychic contents (conscious and unconscious); and perhaps eventually a perfectly integrated psychic organism, a perfect

“personality” in whom Heaven and Earth are married, in whom the ego has become transfigured into the Christ being, the Living God.

If the Sun represents the energy of the Self, what will symbolize the form which the Self is to manifest outwardly in the perfected personality? Essentially Space itself, as perceived by the individual man at birth. For Space is the God of astrology. My space is thus my God, the God which may become “living” in me, if I become integrated, *whole*; truly a “solar” being. However my space is not universal Space as long as I am inhabitant of a mere planet subject to a sun. It is the space seen from the earth's orbit; or from a geocentric point of view, the ecliptical space—what we call Zodiac.

In other words, my space as an earth-child is the zodiacal pattern created by the two axes symbolizing the crucifixion of universal Life in a particular entity; the horizon and the meridian. Astrologically this means the Ascendant-Descendant axis, and the Mid-Heaven—*Imum Coeli* axis; or the four “angles”. This quadrature symbolizes the form of the Self, the morphology of Destiny, the archetype of a human life. The horizontal axis refers mostly to the form of consciousness; to the type of activity in the performance of which I will reach consciously that integration which is the goal of human life. The vertical axis deals essentially with the manner in which the collective unconscious will find in and through me a focalized expression. It refers also somewhat to the parents, as it is through the parents that the race impresses its will upon the individual.

The relation of Sun to these axes is very significant, as it tells us about the psychological relation between the elements of energy and form in the Self. Besides, the pattern made by all the planets (their mutual aspects and their relative position in the circle of houses) is also a factor in the cycle of the Self; for in this pattern we see the way in which the conscious and unconscious functions of the psyche work out the problem of integration posited as it were by the Sun and the axes. This will become clearer as we study the individual meaning of the two sets of planets.

Planets Referring to the Conscious

These planets should be considered in pairs; for the law of polarity operates in all life-processes. We may say that some of the planets are masculine, the others feminine. But such a classification may be more confusing than really helpful. It might be better to say that Saturn, Jupiter and Mars initiate life-processes. They act as *casual agents*. The Moon, Mercury and Venus establish or fructify, complete or bring to fruition these same processes. This will be made much clearer as we consider each pair separately.

Saturn-Moon. Saturn, in Greek mythology, is the ruler of the Golden Age, the first age,

age of childhood and innocence. It refers to the first process whereby the universal life-force becomes differentiated, limited, particularized as a living cell—as the initial seed. Such a process of differentiation is the absolutely necessary condition for individual existence, that is, existence as a separate entity. Psychologically speaking, Saturn symbolizes therefore that process which leads to the realization: "I am". This may not be however such a simple realization as it may seem and has seemed to many. Thus the modern psychologist speaks of the "ego-complex", as previously defined: "a complex of representations which constitutes the center of my field of consciousness".

Within the "field of consciousness" life flows; in other words changes take place, energy is released in actions and re-actions. This "psychic energy" which is contained and operates in the field of my consciousness (within the boundaries of my ego, set symbolically by Saturn) is represented astrologically by the Moon. The Moon is that portion of the Sun which is enclosed by Saturn—if such an astronomically peculiar sentence may be allowed. It is that portion of the life energy of the total being of which I am aware as myself, as the conscious ego which I am. Saturn refers to the abstract structure of this ego. The Moon pours into this structure "psychic energy"—and the result is a conscious entity, a particular living entity. The relation Saturn-Moon is therefore the relation form to energy. Form conditions energy; though there is really a deep reciprocal action, which it would be too long to discuss in such a brief survey.

JUPITER—MERCURY

Jupiter is a much more mysterious symbol than most astrologers seem to believe. Its reputation as a sign of unalloyed good fortune does not appear to stand the test of psychological analysis; even though, in an abstract sense and ultimately, the process it symbolizes is always leading to an increase and expansion of consciousness—but at times through very dire ordeals. Jupiter is ordinarily opposed to Saturn as expansion is opposed to contraction. Saturn differentiates the particular entity out of the universal matrix of life. Jupiter brings to the bound ego that which will compensate its one-sidedness, and thus will make it once more whole, and universal.

Jupiter's function can be best expressed in practical or analytical psychology by the term "compensation". I must refer the student to Jung's works if he wishes to grasp in its totality this most important concept; and even in these works much is undoubtedly left unsaid. Marc Jones defines Jupiter as "the point of the soul's precipitation out from itself into tangible life and definite being". It shows "the point of expression of true selfhood, of the purpose of incarnation". This

means also "compensation" in a metaphysical sense. I regard the soul as that which constantly strives for harmonization and integration; and the "purpose of incarnation", as the neutralization of past disharmonies and failures—toward the establishment of harmony at a fully conscious level.

Jupiter is thus the power in us of right action, the voice of our true Destiny. Our conscious ego (Saturn-Moon) is the result of our past, the synthesis of our limitations and our ancestry. It is the present as the sum-total of the past. But Jupiter is the future pulling this present onward. It is the destiny which is to be ours, the destiny which will balance our past inadequacies, and fulfilling which we shall become whole. The soul and the ego are the two poles of a relation which operates by compensation. Thus for a masculine consciousness the soul, is projected as an image, is normally a woman—the Muse, the Eternal Feminine drawing us onward, etc. For a feminine consciousness the soul is the hero, the christ-image, the Adonai, Siegfried the victorious, etc. It is always that which completes us, which makes us whole. It is also for the devotee, the incarnate God, the savior, the spiritual teacher or "Guru": that divine personage who comes to us as representative of the Whole, however we may imagine this wholeness. Therefore Jupiter is God's path toward men. It is religion. It is ceremonial. It is also the King, as a symbol of the wholeness of the state; he whose justice and strength (ideally) compensates the weakness and failures of the citizen. In a Democratic state it is the Constitution.

Mercury makes the Jupiter function operative. And therefore it is intelligence, the vehicle of the soul. But alas! a vehicle which often throws off the divine Personage it carries and runs amuck, goaded by the moods of the Moon, or dominated by the separative crystallizing power of Saturn. Mercury as ruler of the nervous system brings sensation to the ego, that the ego may learn the lesson of relationship to the objects of the outer world. It unifies the reactions of the body. It is the servant of Zeus-Jupiter—but so often an unworthy messenger and a thief. The Moon, the feminine pole of Saturn, has moods and constantly changes. Mercury, which holds a similar relation toward Jupiter, is ever restless and moulding itself upon the object of the sensation or the thought. Hindu Yoga is largely a system of concentration by means of which the Jupiter function subdues the Mercury function.

If Jupiter assumes the position of an avenging God—if there is no other way to counteract Saturn's crystallizations—Mercury is likely to turn equally destructive and to shatter the Moon's tides: for Mercury is always more or less inimical to the Moon—unless Saturn has turned subservient to those functions of the unconscious which we shall presently study. *(Continued on Page 62)*

A Scientist

Discusses Astrology

Correspondence with Wm. J. Tucker

By DR. A. RITCHIE-SCOTT

B. Sc. (Lond.)

(Continued)

EDITOR'S NOTE—We believe these letters will be interesting and valuable to students of Astrology as revealing a point of view with which we are all too unfamiliar.

The Scientist has much justification for his attitude toward Astrology, as any honest thinker must admit and when we find a man of definite scientific training and attainments who can and will give us an opinion based upon a reasonable study of the subject it behooves us to give those conclusions careful consideration. He may not be entirely correct in his conclusions but neither are we necessarily entirely correct in ours. As Dr. Ritchie-Scott suggests in one of the letters which follow "We may eventually meet on common ground."

Dear Mr. Tucker:

I have read your M.S.S. with great interest and I am sure you would wish me to criticise them quite freely. In the first place the history of science shows us quite clearly that when *completely new* ground is broken into and new discoveries and new theories are propounded they invariably meet with opposition from what we might call official science. And the reason is not far to seek. Each new science brings forward new facts, or at least new arrangements of facts, and in order to weld these facts into a coherent theory totally new concepts are needed. But these new concepts or new angles of vision are not and cannot be developed until we are on speaking terms so to speak with the new order of facts. It is very tempting, however, and in some cases necessary, to try and interpret the new facts in terms of the old concepts. It is putting new wine into old bottles and the "official" scientist will quite rightly assert that it will not do. The meanings of the old concepts are being strained beyond their definite and accepted meanings.

Consider meteorology, which was at one time in the state of Astrology, at the present time. Weather lore consisted of strings of saws about the weather, something like our "Centiloquies." There was undoubtedly much truth in them but no coherent or unifying principle. Any attempt to weld them into a coherent theory by means of their physical concepts would have been futile, and they were hopelessly entangled with crude superstitions and beliefs. It was not until after incredible labour and study that such ideas as cyclones, pressure gradients, etc., were developed, that

any progress could be made. My meaning then is this. At the present shape, though it is interesting and indeed most useful to see how far our present knowledge can explain astral influences (presuming it exists) it would be quite premature to advance any such theme as a justification of the truth of Astrology, before we can have any recognition of Astrology. The facts must be investigated and presented in such a fashion that they can be tested, as one would for example prepare a paper for one of the Royal Societies. If Astrology ever reaches this shape it will I feel sure take on an aspect and presentation that none of us today dream for the simple concepts. Then perhaps we shall be able to see how the new science links up with the old, as it must if they are both facets of the same truth. I think the parallel between Astrology and Meteorology is striking. Another striking analogy is with Graphology which until about 20 years ago was no better than a rather silly parlour game, when it was not mixed up with charlatanism and crudities but is now by the labours of Sandak and his school being licked into the region of a reasoned body of knowledge.

Now as to one or two points in your M.S.

Induction. I do not see that the electron can be charged by induction. If so they would become neutral as soon as they were out of the orbit of the proton. They do not of course as they are Beta-particles with an Alpha-charge which they carry with them.

"A body will not radiate energy unless," etc. Surely this is a mistake possibly in expression. The Sun for example radiates enormous quantities of energy, but a minute fraction so far as we know impacts on matter. As to the attraction between the earth and the stars, there is of course gravitation which can be exactly calculated.

Your idea of the Sun deflecting the rays from the stars and thereby by affecting their incidence and effect is original and suggestive, but it must be remembered that the amount of bending is very slight.

Let us leave for a moment the expression "magnetic field" which is something very definite and calculable, and substitute the vaguer term "stellar influence" but pursue the analogy. The radiation of all known forms of energy is according to the law of universal squares. This being assumed for "stellar influence" the actual amount of "energy" (or what corresponds to energy) would in the case of any star be excessively small. The smallness would not matter if it were allowed sufficient time to act. The effective gravity attraction of say Sirius on the earth though small is effective and would be perceptible after millions of years. But the stellar influences must be sufficiently powerful to create a field that stamps the character of the native almost instantaneously. If you are on the right track something of this sort must take place, but it would appear to be "radiation" of a somewhat different kind from that known to physics. It is at a point like this that new concepts are needed. This is where wine bursts the old bottles.

Have you considered the astrological possibilities of the cosmic radiation discovered by Millikan and Cameron? It consists of γ -rays so powerful that some of it will pass through 16 feet of Lead! With ordinary Light but a minute fraction will pass through the thinnest gold-leaf. It is calculated to break up 1.4 atoms in each cubic centimetre of air per second and must break up millions of atoms in our bodies per second. What the physiological effect is we do not know. It has been shrewdly suggested that they are the primary agents of decay in animal and vegetable life inter alia of old age and death. Its wave-length is dazzlingly inter alia of old age and death. Its wave-length is dazzlingly short—about the 1.3x10⁻¹³ cm. Further it is believed not to come from the stars at all but from nebulae or from sources outside the galactic system. Now if this radiation differs in different directions we might have here an explanation of the influence of the Houses. Here we have an influence of terrific power but of practically unknown origin. I leave you to work it out.

Just one other point before I close this already too long letter. Have you ever considered the influence of the fixed stars in relation to their physical constitution? Clearly, I think the astrological influence of their physical state must be correlated. We can classify the stars in two ways (1) according to their traditional influences. (I don't know whether Robson's "Fixed Stars" is reliable, but that is the kind of thing I mean.) (2) Astronomically as to distance, colour, temperature, density, diameter, dwarf and giant stars, binaries, etc. Then is there any correlation between these two lists? Density in particular—Sirius—for example has a density of about one ton per cubic metre, but Sirius-b has a density of about 1 ton per cubic inch.

But I expect you are thoroughly tired of deciphering this by this time. There is however an enormous amount of ground to be surveyed and it is only by ranging over a large field, at present at all events, that one can discover a fruitful line of advance.

Trusting this may prove of use to you and thanking you for the loan of the M.S.,

I remain,

Yours sincerely,
A. Ritchie Scott.
B. Sc. (Lond.)

Dear Doctor:

I must tender by most cordial thanks for your very kind letter of the 9th inst. What impressed me most was the type of criticism it contained. Far from being controversial it was in fact true philosophical criticism of the type which involves an effort to get beyond the spheres in which a controversy is carried on. In other words, it was that type of criticism which lifts a subject into the region of principle and disdains the attack and rejoinder of controversial criticism.

Your argument as to the attitude of official science towards new discoveries and new ideas is well-considered and very well presented.

Those are indeed the essential difficulties with which I have found myself confronted. Unfortunately for me, the discoveries which I have made actually require a New School of Thought for their due appreciation. That is what impeded me at every trick and turn in the recent controversy—with the result that I was obliged time and again to explain myself in terms of the old concepts whereas in actual fact I meant nothing of the sort. On the other hand, I knew that unless I prepared the reader with sufficient ground-work to comprehend the new principles involved, I would be laughed out of court.

I agree with you absolutely that new facts are calculated to alter all the old concepts. That is usually the inevitable result. Although sometimes all that is required is a mere changing of the point of view, as for instance the changing of the Ptolemaic system into the Copernican.

Nevertheless, should a new theory necessitate straining the meanings of the old concepts in any shape or form, I would be one of the first to look at it askance.

I freely admit that I have abandoned certain of the old concepts. Radiation and gravitation both mean something quite different to me from what they mean to the official scientist.

Please don't think of me as a crank because of the statement. It simply means that I have (or think I have) discovered certain flaws in those concepts, which discoveries have caused me to supersede my previous convictions in favor of my new concepts which I find fit the observed facts far closer.

Take radiation, for instance. I cannot accept the view of official science that the sun radiates in all directions irrespective of whether another body be at hand to receive the radiation or not. I cannot accept the view that material particles are transmitted from the Sun thus causing the latter body to lose weight and thereby mass.

If the sun radiates in all directions equally, then there should be no variations in the seasons at all at any one spot on the earth's surface. Considering our own latitude, the sun is actually closer to the earth in the winter than it is in the summer, and yet we have winter here. This result is due to the difference in the sun's angle of declination in respect to the latitude. Therefore, with regard to the question as to why the sun should apparently radiate less light and heat in winter than in summer I claim that this is accounted for by my induction theory which theory will incidentally explain the reality of the focal points where the energy is found concentrated.

An important new concept is involved here. My view is that *no heat* is received from the sun. Further, that the earth suffers no loss of heat through radiation. In other words, that the heat experienced in the body when exposed to the sun is the self-same energy that is already existent in the body.

As chemist I say that matter consists of molecules plus a definite quantity of energy. Alter the quantity of energy and your molecules will then be transformed into molecules of another kind. Matter is transformed into its various states (liquid, solid, and gaseous) by the addition or subtraction of energy. But, the right quantity has either to be subtracted or added; because any lesser or greater quantity will merely affect the vibratory period of the atoms and will not secure their disintegration. Heat added to ice, for instance, will first change the state of the ice to water, and later to steam; but throughout those changes its application does not secure the dissolution of the gases H₂ and O.

My view is, then, that the light received from the sun affects the vibratory periods of the atoms on which it falls, thus causing them to exhibit heat-energy in accordance with the wave-length of the particular atom involved. (You will note that a type of selectivity is hinted at here, which will account for the lack of uniformity of apparent heat-distribution—a fact well known to Meteorologists.)

My reasoning is as follows. When I approach a fire I experience a sensation of heat. I am therefore tempted to premise that the fire is giving off heat. Indeed, as I approach nearer and nearer I find the fire becoming hotter and hotter. However, if I approach too near I experience pain. Am I to say, therefore that the pain is in the fire?

Certainly not; the pain is in me. But, if the pain is in me, so also is the heat and not in the fire. The fire, in other words, is merely the source of energy which is affecting the vibratory movement of each atom of my body and when the vibration of those atoms exceed certain definite limits, pain is experienced.

You did, however, put your finger on an essential difficulty when you pointed this passage out as possibly a mistake in wrong expression. It wasn't a mistake so far as I was concerned, as you will see from the above explanation. But the trouble is I have taken it for granted that my theory is an accepted fact; whereas it is a totally new concept and therefore entirely unknown to others. Whence my very great difficulty in writing up my material in article form. This because my new science terms with new concepts of a very daring order.

Let us now deal with the "stellar influence" theory. Regarded from the standpoint of abundance, the quantity of energy received from the sun easily swamps the entire totality received from the stars. This is exemplified in its palpable effect on the growth and development of organic life, the amount of light it emits, and the amount of heat it generates (or excites) in matter.

But the effects traceable to the sun as cause are definite and restricted. The spectrum discloses the fact that there are three main types of stars: Yellow, White, and Red; and it was no less an authority than Secchi who classified the sun as belonging to the yellow type of stars. This type includes such stars as Arcturus, Aldebaran, Capella, Pyocyon, and Pollux. The White type includes such stars as α -Lyrae, Sirius, Altair, Regulus, Rigel, etc., and the Red stars include such as Antares, α -Orionis, α -Hercules, Mira, etc.

Each type possesses its own characteristic spectra. But a comparison of the spectrum of each individual star will show that there is an essential difference as between stars of the same type. And that difference consists of variously-accented wave-lengths. It is to this quantitative wave-length aspect that I attribute the special selectivity of individual stars. To show the wide limits which are possible here, I need only remark that for the single element Molybdenum, for example, there are about 400 separate wave-lengths to the band, ranging from 2295.0 to 6030.2.

This is a special line of research which I am optimistically pursuing at the present moment.

I am loath to accept the conception that the cosmic rays originate in the nebula. My conviction is that they consist of the return current from the earth to the sun.

If a current flows from the sun to the earth (and to other planets) as presumably is the case because of the evident light-transmission then the same current must return to

the sun to complete the circuit, even though its physical characteristics should be transmogrified. My conception is that the aurora borealis and northern lights are phenomena caused by this return-flow. In view of the fact that the direct flow from the sun is concentrated on a comparatively narrow band running parallel with the equator, it is to be expected that the return flow would proceed from near the poles.

It is true that my conception of the origin of the cosmic rays is pure speculation but so is the conception that they originate in nebulae.

I am afraid I must now draw my long letter to a close, even though I have only dealt with a small part of the contents of your letter.

I must also apologize for the somewhat sketchy treatment but the ground I have touched upon is, as you know, of such enormous scope, that a treatise would have to be written around each individual subject in order to develop the arguments in a satisfactory manner. Yet the outlines will serve the purpose of indicating the characteristic lines of my individual research in connection with astrology.

It will be quite a while yet before I can outline my new concepts regarding gravitation; but when I do you will find them to be of a very sensational nature. The basic facts observed by Newton and Einstein remain of course unaffected, but my essential conceptions of the nature, purpose, and control, of and by gravitation differ in totality from theirs.

With kindest regards and best wishes,

Yours sincerely,

W. J. Tucker.

Dear Mr. Tucker:

I am obliged to you for your letter of the 5th Sept. which arrived just after I had posted by letter to you. I have also received your letter of the 8th., and shall reply to both at once.

I think it is quite clear that we each stand on definite but very different grounds. I am quite sure you have, as you say, proved the truth of Astrology to your own satisfaction. For you that is quite sufficient and you naturally seek for hypotheses to explain and correct these truths. There are, it is true, many kinds of truth for which we may have a personal belief that is sufficient for ourselves. These truths are not the least important in our lives and much of this is applicable to Astrology. But such personal beliefs can never be the basis of a science. If ever Astrology is to be recognized as a Science we must have it founded on demonstration or experimental facts which may be tested by any competent person or upon observations which can be repeated by any-

body. I have examined a great many books, ancient and modern, on Astrology, and while I have certainly noticed references to "proofs" and "observations" these have never been given in such form as to constitute evidence. The possible exception is that of Cholsnard whose work I have yet to examine closely.

I think I understand what you mean by qualitative versus quantitative, and it is just here that the statistical method comes in. The one thing which at least is quantitative is the number of *correct correspondences* between the celestial and the human events. And this test must be satisfied.

Let me cite a possible case. Suppose we disregard the influence of house and aspects, etc. (A pretty large assumption, but there are mathematical methods of at least approximating to this). The sun spends one-twelfth or 8.3% of its time in Aries. If then we took 1,000 nativities at random we should expect to find 8.3 in Aries. If now we took 1,000 nativities of famous generals and soldiers and found say 160 in Aries, we should say definitely that there was a connection between Sun and Aries and soldier-ship. On the other hand if we still got about 83 we could definitely say there was no such influence. This would be concrete objective evidence apart from all feelings or private reactions which should be discussed respected, and generally reasoned about. The accumulation and examination of such statistics might be difficult. In Scotland, for example, the time of birth has to be stated on each birth certificate (or used to be so) and I believe the same is the case in France.

Your suggestion that the distribution of births in different countries differs is most interesting. If we can regard natives of any country as having any well-marked characteristics it should certainly be so and we would be another fruitful line of statistical investigation.

As to the smoothness of the expectation of life chart that is simply due to the large number of cases taken and the continuity of the cause acting. The significant thing is the shape of the curve. I do not see how it can be related to the zodiac as the death statistics are taken entirely at random without reference to dates throughout the year.

You mention Bode's Law as qualitative only. Surely it is nothing if not quantitative! It purports to give the distances of the planets and these are quantities.

I often wonder if the last word has been said about Bode's Law . . . that is merely a coincidence. May it not be an imperfect form of some law like Bode's Law for electron orbits.

I quite agree with you in regard to the probability that the stars if they have any effect only affect the elemental passions—the fundamental impulses—and further that they have no effect on the Will.

(Continued on page 62)

Progressed Moon

By SCOTT NEILSON

ASCENDANT

MOON trine or sextile ASCENDANT. Native may be benefited through the public. Help and support from women in the life. Some change will come which will bring great good fortune. Excellent for money matters. Good for social life. In a married woman's chart, may bring the birth of a child.

MOON conjunct ASCENDANT. There will be a tremendous uplift of spirit. A long trip will be taken, possibly an ocean voyage. The native will be brought before the public advantageously. Will bring a successful change in business or profession. A love affair often ending in marriage.

MOON square or opposition ASCENDANT. Illnesses and disappointments in connection with travel. Will suffer through enemies, especially women. May bring a scandal through a love affair. Unpopularity with the public may bring loss of position. Unfortunate for money. Native will meet with deceptions and adversities. Poor health is to be expected. This period is one of trouble.

MIDHEAVEN

MOON trine or sextile MIDHEAVEN. Some new responsibility which will bring the native favorably before the public. Good for business or profession. May bring marriage. Sometimes gives the birth of a child.

MOON conjunct MIDHEAVEN. Brings changes into the life of a fortunate nature affecting the business or profession. Added responsibility of a pleasing quality. May be a long sea voyage. May bring marriage.

MOON square or opposition MIDHEAVEN. Apt to bring death of a woman friend. There will be difficulties and misunderstandings in the domestic life. Discredit in business, which may cause loss of position. Native will be unpopular with the public. Unfortunate time for any changes or travel. He will meet with ill health, trouble, deception and anxiety. Financial difficulties.

SUN

MOON trine or sextile SUN. Important changes for the better. Favors from superiors. Native has hope and confidence in himself. New ties are formed with influential people. Fortunate for the parents. Good for work along intellectual lines. Often brings marriage. Ambitions, hopes and wishes are realized and opportunities are offered to improve general conditions.

MOON conjunct SUN. Some radical

change will take place which will have a permanent effect upon the whole future of the native. The change will take place in the house occupied by the planets.

MOON square or opposition SUN. Unfortunate time for the health of the native, parents or marriage partner. Often causes a death in the domestic sphere. Trouble with the opposite sex. May bring divorce. Will meet with meddlesome people who will interfere in the life. Difficulties in the business world. Bad time for trips and change. Critical position.

MOON

MOON trine or sextile MOON. Good for the health. It will bring the native happiness to help others. New undertakings begun, new friends made. He is logical and businesslike in his dealings with the public. Domestic happiness.

MOON conjunct MOON. This depends upon how the natal Moon is aspected. It will bring to the fore such things as the natal Moon designates. Changes are bound to occur, the events taking place in the house that holds the natal Moon.

MOON square or opposition MOON. Quarrels and misunderstandings with women friends. Unfortunate for health and for dealings with the public in general. This aspect is especially bad for women. May cause the death of a woman. Native will show jealousy towards women or receive the jealousy of a woman. Will bring a change of an unfortunate nature.

MERCURY

MOON trine or sextile MERCURY. Good for mental occupations, such as publishing, newspaper work, writing and study. Success is sure to come along this line. Native will be clever, witty, observing and accurate. This is a good aspect for invention. Will seek the companionship of intellectual people. Good for travel.

MOON conjunct MERCURY. The mind is quick and on the alert. In fact, the mind may be too keen and jump too quickly to conclusions, causing suspicion. Good for travel for the native will remember everything he sees with the greatest accuracy. Good for writing and study in general.

MOON square or opposition MERCURY. Unfortunate for business and domestic affairs. Not good for dealings with publishers or correspondence of any kind. Sharp criticism may come through the press. The tongue of the native will be cutting at retort

and he will make enemies through speech and writings. Will be brought into contact with untrustworthy persons.

VENUS

MOON trine or sextile VENUS. The native will fall in love under this trine or marry. Good for financial dealings with the public. May take up some new line of work at this time. His feelings will be at their best and he will have charm and an optimistic viewpoint of life. Will be sympathetic and helpful towards others. Good for travel.

MOON conjunct VENUS. Brings marriage or the meeting of some one who will greatly influence the native's life for good. Favors from superiors and relatives. Will be keenly alive to the artistic. Good time for travel and the making of friendships.

MOON square or opposition VENUS. Disappointment, trouble or separation from a loved one. Often brings the death of a woman friend. Things will go wrong in the domestic circle; a courtship may be suddenly ended, or a marriage tie broken. Unfortunate for any dealings with the opposite sex or social engagements. Unfortunate for business and no change should be made if possible.

MARS

MOON trine or sextile MARS. Will use great mental energy to forward his aims and ideals and these will be marked with success. Great zeal for travel and change. He will probably have an emotional love affair. Often brings a sudden marriage. Very liberal with money. Excellent time for business activities and a promotion in business may be looked for.

MOON conjunct MARS. The native is reckless, impatient and emotional. Will have a love affair which will probably burn itself out in its own heat. Sudden impulses, quick tempers. So anxious to make his own point he will be rude and tactless. Not good for travel, for accidents and fevers may result.

MOON square or opposition MARS. Unfortunate for business, relatives and friends. May cause loss by fire. Accidents, fevers or wounds which may send the native to the hospital. Unfortunate for any dealings with the opposite sex, may bring a scandal. Sometimes brings a death in the domestic circle. The native is bound to suffer loss in some manner, for this aspect is most potent and will be felt.

JUPITER

MOON trine or sextile JUPITER. Good for financial conditions. Excellent for health. Favorable for the domestic circle, relatives and friends. Opportunities in business are offered at this time. Fortunate for dealings with the opposite sex. Pleasure and plans

formed in the mind some time before, will now come to pass. Many times brings psychic experiences.

MOON conjunct JUPITER. Good for money matters. Fortunate for love affairs and social engagements. Gain through a relative. A favorable change of some kind will take place. The native may become engaged to be married under this conjunction. It is due to his happy outlook on life that he receives so many favors.

MOON square or opposition JUPITER. Unfortunate for dealing with women. Disputes with those in the domestic circle. Trouble through servants. Unfavorable for money conditions. Very apt to cause the death of a woman relative. Unfavorable for health, some illness may take place on a journey. The native's manner will be difficult and pompous.

SATURN

MOON trine or sextile SATURN. Benefits may come through the grandparents or other elderly relatives. Greater responsibility having to do with home conditions. Help from faithful friends and superiors. Steadfastness regarding work causes much to be accomplished. May buy a home or other property. Sane outlook regarding money. Care will be taken of the health.

MOON conjunct SATURN. The native will be depressed and look only on the dark side. Unfavorable for social life. Unfortunate for the domestic life. Everything he does or wishes to do is limited. Trouble with those in authority. Unfavorable for health. Disappointments through friends. Unfortunate for financial conditions.

MOON square or opposition SATURN. The native or those related to him will meet with disasters, severe illnesses, operations and death. In financial affairs he meets with deception. Disputes with elderly people. He is pessimistic, gloomy, discouraged and fault finding. Critical time for health and financial conditions. This aspect leaves grief and sorrow in its wake.

URANUS

MOON trine or sextile URANUS. An unexpected change in business or profession and gain thereby. Romantic love affairs with unusual people. Will be drawn towards the occult on account of his own psychic experiences at this time. May invent under this aspect. One of the friendships formed at this time will be with an outstanding person, who will be a great help spiritually and possibly financially as well.

MOON conjunct URANUS. Unexpected events take place. There will be travel, money coming from unsought places. May bring change in the occupation or change of residence. No lasting tie, however is formed either in business or social life. Events giving promise of much, and suddenly in nothing.

(Continued on page 31)

Taurus

General Forecast

For Those Born April 20 to May 21

Based upon the Major Transits

NEPTUNE IN VIRGO

1928 to 1942.

A complete analysis of this influence has already been given in the June, 1933, issue of AMERICAN ASTROLOGY, commencing page 21.

URANUS IN ARIES

1927 to 1935.

For a complete analysis of this transit relative to your sign refer to page 21 and 22 of the June, 1933, issue of AMERICAN ASTROLOGY.

URANUS IN TAURUS

1935 to 1942.

Uranus will definitely enter your birthsign in the spring months of 1935, but some advance information on this is likely to be received during the summer months of 1934, between June and October, when Uranus makes a tentative approach, prior to its retrograde movement, back into Aries where it will continue until the 28th of March 1935.

When Uranus transits your birthsign, things will start to happen in your life that you may never have considered within the range of possibility to say nothing of probability. Of course, this need not be expected to operate in the lives of all Taurian natives necessarily at the same time. One may determine the approximate year of the maximum power of this influence by adding one year to 1934 for each four days that the birthdate is later than April the 20th. Thus a person born between April the 20th and April the 24th may expect to get the results of this transit during the summer months of 1934 and the spring months of 1935, whereas a person born April the 24th to 28th would find this influence most powerful during the later part of 1935 and during 1936. Generally speaking, Uranus will incline to a sudden, surprising and radical change in your personal environment and attitude toward life. To some it may bring a remarkable advancement of fortune, those inclined to public life, might be elevated to an official position by appointment, or be otherwise granted political preference as a result of the friendship of those in power.

It will also, no doubt, incline to develop

an interest in connection with and to seek self-expression through radical, unconventional associations and since Uranus is, in itself by nature such a tireless, enthusiastic worker, in the cause of human liberty, no doubt, organizations devoted to such causes may claim among their members many Taurian natives during the next few years.

What the ultimate effect of this Uranian transit may be in individual cases will, of course, depend to a large extent on the position and aspects of Uranus in the individual horoscope and also to a considerable degree upon the birthdate itself, since this would determine the transiting aspects that Uranus will receive from other planets during the period of its maximum power.

Whatever the form of manifestation may be, Uranus may be expected in any case to generate an intense longing for freedom and all forms of conventional limitation, probably manifesting in some cases as a desire to get away from everyone and everything with whom the individual has been previously associated. There will be a desire to reorganize the entire life and personal environment and blaze a new trail.

It may be expected that this Uranian transit through Taurus will be more potent to produce effects, more dynamic and objective in manifestation in the lives of Taurian natives than will be the case with any other sign. Although it may be said that all of the fixed signs which includes Scorpio, Leo and Aquarius to fall into this category.

When blazing a trail into the uncharted future, it is important that one remember that the future must always grow out of and include the past; you do not progress by tearing down, rather by building, we must always go on from where we are.

This influence is likely to bring about many changes in your system of relationships—in your house of friends, not only may you lose in some extraordinary manner many friends of years acquaintance, but it might also attract someone into your life, who would really be the symbol of a new social order for you. This is an influence that inclines strongly to marriage and under somewhat unusual circumstances, either marriage to someone on very short acquaintance—love at first sight—or marriage

on impulse to someone who you've known for a long time, but have hitherto never seriously considered as a partner.

Briefly Uranus in one's birthsign may be accepted as a symbol of personal liberation, it will impel to personal relations quite different from anything you have known before, it will make you quite a new person, you might be said to receive from this planet a new personality, and, no doubt, the transit of Jupiter through Scorpio, your solar seventh house, October 1934 to November 1935, will present you with the problem of adapting this new personality to a definite form of relationship which must be in harmony therewith if you are to continue to make progress.

SATURN IN AQUARIUS

1933 to 1934.

Refer to page 22 and 23 of the June, 1933, issue, of AMERICAN ASTROLOGY, for a complete analysis of this transit in relation to your birthsign.

SATURN IN PISCES

1935 to 1937.

Saturn in transit through your solar eleventh house, will naturally tend to bring a realization of an ambition and a concrete manifestation of your individual hopes, wishes and aspirations in life. This may not be necessarily on a very wide scale, but it should be in a very definite form and tend toward permanency.

However, there are likely to be certain difficulties incident to this transit, which might result in much unhappiness that depends largely upon your point of view and shall we say, your philosophy of life. So much, in fact, depends upon one's individual philosophy, for this, after all, determines the personal reaction to any and all conditions and circumstances that arise. When Saturn opposes Neptune in 1936, it will insofar as the Taurian native is concerned, no doubt, generate some serious conflict socially and emotionally. However, there is one ray of light shining through this cloud in the position of Uranus, in your birthsign, which harmoniously aspects both Saturn and Neptune, through the full expression of the Uranian tendency above referred to, it may be possible for you to harmonize this Saturn-Neptune conflict. An opposition always calls for a high degree of cooperation and cooperation calls for the making of mutual concessions.

Perhaps it might be of great assistance to you, if you should have a thorough understanding of the nature of the powers and conditions symbolized by Saturn, the planet of necessity. It is the law of Saturn that "Manifestation implies limitation" and if we thoroughly realize that law and have formulated it in our consciousness clearly

it is possible to see within the limitations of Saturn a greater freedom and in fact the only real freedom possible. All the limitations and restraints imposed by Saturn are really in the individual himself, they may—always do—appear to take a myriad of forms in the outer environment, well, after all, the world is but a mirror in which we see reflected—the self. As long as we continue to place this power of restraint outside the self in the illusions of the outer world, we can never penetrate to the real mystery of Saturn or avail ourselves of his transcendent gifts, because this generates an inner fear that kills the necessary faith and paralyzes all effort. We often give our fears high sounding names—conscience is one—common sense is another—we can always find words with which to hide the truth. But, through the discipline of Saturn—time, fate or the law of cause and effect and through frequent clashes with our arch-enemy fear, we gradually acquire faith, because "when we have feared all, there is nothing left to fear." Then we are brought to a realization of the great truth that there is in man an attribute of divinity—the Will. The human race is slowly, but surely evolving to a realization to the fact that this Divine Will and Human Personal Will are identical and with this comes a realization that there is no power in heaven above or the earth beneath higher than the Will of Him, who calmly and with perfect faith say, "Thy Will be done." Such a man fears nothing, yet his courage is not ruthless, for ruthlessness is born of selfishness, while this higher courage is born of faith and love—unselfish love. He who is selfish must also know fear, for these two are the Siamese twins of consciousness, one cannot live unless joined with the other. "Perfect love casteth out fear—and with it selfishness." Hence Venus the planetary symbol of love is said to be the antidote of Saturn. He who has mastered the lessons which Saturn the planet of inexorable would teach will find that Venus replaces Saturn in his horoscope, he recognizes but one law—love, and but one power—Will.

JUPITER IN LIBRA

September 1933 to October 1934.

For an analysis of this transit refer to page 23 of the June 1933 issue of AMERICAN ASTROLOGY.

To the above we might add that the opposition of Jupiter to Uranus in the last degree of Libra and Aries in October 1934 is likely to mark a great crisis in your life. A very remarkable change in your personal circumstances and system of personal relationships is likely to take place and quite suddenly. As previously stated this Jupiter influence will present you with a definite problem of adapting your new (Uranian)

personality to a new and definite form of relationship, which must be in harmony therewith if you are to continue to make progress. Any social or personal discord which may arise as a result of this opposition, might be due to an abortive and futile attempt to resist the changes which are inevitable—an attempt to apply old methods and old standards to new conditions. Uranus represents a cosmic ray of great power that transforms and regenerates—the onward surge of the life force to ever greater and greater evolutionary achievement. If we align our selves therewith we are also transformed and regenerated—reborn. But, forms who resist this evolutionary power are shattered and often very suddenly somewhat in the same manner that a tree is struck down by a flash of lightning. What makes this so difficult is the fact that Uranus does indeed act so much like a bolt from the blue. The influx of power is so sudden and in such great volume that only a consciousness that is extremely adaptable can adjust itself quickly enough to avoid disaster. When we contact Uranus it is very much like touching a high tensioned electric wire. They who pass safely through such a test will do so by virtue of an attitude of complete NONE—ATTACHMENT.

JUPITER IN SCORPIO

October 1934 to November 1935.

After you have crossed the "Rubicon" symbolized by the Jupiter-Uranus opposition referred to above, you may expect Jupiter in Transit through your solar seventh house to operate as an expansive influence upon your social life—your environment. This may be expected to bring much good fortune through marriage, partnerships, legal affairs and in general through all public relations. Those whose work may be of a public nature, such as may call for appearance on a public platform may enjoy a very fortunate and successful period. The keynote of Jupiter is MATERIAL RELEASE and since in our modern economic system material freedom usually implies money, you may expect to enjoy quite a large measure of financial success through business, partnerships, agreements, marriage and successful contacts with Courts of Law. However, this Jupiter must be recognized as an impersonal influence and it must be clearly understood that such success as may come therefrom will be through the cooperation of others and contingent upon social contacts it calls for an equitable arrangement and adjustment of your personality to your environment, which in turn implies cooperation. You cannot have everything your own way under such an aspect, but if you will accept life and make concessions in the

interests of harmony you may enjoy quite a large measure of success during this period.

MARS

We consider the transit of Mars of vast importance in the predictive phase of Astrology, not so much as a factor in determining the nature of an event, but rather as marking the time, since this planet symbolizes a force that tends to generate conflicts and thus bring matters to a culmination.

MARS IN TAURUS

April 23 to June 2, 1934.

FIRST HOUSE

This will tend to make you extremely positive toward your environment and Mars in this department can be quite violent in his eagerness for self-expression. This represents a new influx of energy, which calls for strict self-discipline and a definite purpose in life in order that this energy may be directed into constructive channels, otherwise one might become turbulent, passionate, reckless, over-confident and subject to great dangers through impulsiveness and impatience.

Mars is to the social machine what the spark plug is to the automobile and when properly controlled and timed is a most essential factor in the world's works and out of control may devote his force to no better purpose than that of destroying everything and everyone whom he may contact. He might be inclined to think that he could rise only by pulling someone else down and since the universe does not happen to be constructed on that plan there is ultimately only one person who goes down and that is Mars. Mars is at his best when he uses his energy and aggressiveness to protect the weak and to help people who are unable to help themselves. He then becomes a valiant defender. His office in life is to keep things stirred up, prevent crystallization (death) which is the natural result of a perfect equilibrium of forces. Mars prevents such an equilibrium of forces, by the simple process of throwing his support to one side or the other and fighting the opposing side with all the energy at his command. Opposition is, in fact, the keynote of his life, he is only at his best and happy when he is opposed to something. An important point about his reaction is that he does not seem to be so much interested in the support of a cause as he is interested in fighting the opposing side. It appears to be merely incidental from his point of view that he supports something.

The conjunction of Mercury and Mars, May the 8th, is likely to mark a culmination of these Martial forces during this period and may be expected to operate through

(Continued on page 22)

Market Forecast

For May, 1934.

General Indications.

The month of May should open and close quite strong, but, we may expect a sharp break about the middle of the month, under the influence of a double square of the Sun and Mercury to Saturn, which is brought to a culmination by the Lunation of May the 13th.

There are five dates, during the month of May, which may be expected to mark important changes in the price trend i.e., May the 3rd, 6th, 13th, 17th and 21st. The 6th and 13th, being Sundays, the corresponding move will, of course, come a day earlier or later according to the Daily Indications. The first four of the above dates, will probably mark relatively minor moves, but, that of the 21st may be considered as the beginning of a major move extending over a period of several weeks, during which the market should make new highs for the year.

The first two of the above dates, viz., May 3rd and 6th, should coincide with an advancing market, while that of May the 13th and 17th may be expected to coincide with declining prices. To summarize the situation we might expect the market to advance consistently to May the 12th, decline from May the 12th to 21st and then enter upon a new phase of advancing prices, which should continue throughout the month of June.

DAILY INDICATIONS

Tues. May 1—Not a strong market. Air, Oil and Liquor stocks may, however, be quite active. An undercurrent of optimism may sustain prices.

Wed. May 2—Considerable weakness may manifest at the opening, but market should gain in strength throughout the day.

Thurs. May 3—An encouraging message from governmental sources may stimulate speculation. A strong market.

Fri. May 4—Very active. Somewhat reactionary.

Sat. May 5—Market should manifest much strength, preparing for new advances.

Mon. May 7—Positive moves should continue. Rail and Transportation stocks favored.

Tues. May 8—Very active, an aggressive market. Advance in prices.

Wed. May 9—Still moving upward, may be strongly speculative.

Thurs. May 10—A dull day. Market may not decline to any extent, but is sluggish.

Fri. May 11—Resumes the advance. May

score some notable gains.

Sat. May 12—A strong market.

Mon. May 14—This is where the foundations may give way and the price structure collapse, certainly the ice is very thin. Fundamentally a weak market.

Tues. May 15—Much improvement. A tendency to advance.

Wed. May 16—Continues to improve, but decidedly conservative in tone.

Thurs. May 17—This should mark a definite turning point in the market trend; may be the beginning of a new advance, which may continue for several weeks and mark a new high for the year.

Fri. May 18—Market may be quite erratic, but gains should exceed losses.

Sat. May 19—Not an important day, but trend is upward.

Mon. May 21—Profit may depress the market early in the day, but it should stage a comeback before the close.

Tues. May 22—A very active market, a strong speculative tendency might result in considerable advances.

Wed. May 23—A strong market, should score new gains.

Thurs. May 24—Another optimistic and progressive day. Advance in prices.

Fri. May 25—Heavy profit taking may result in a marked decline.

Sat. May 26—Very erratic. Sharp up and down movements, but little change at the close.

Mon. May 28—This may mark a sharp break. Professional pressure forces the prices down.

Tues. May 29—Not an important day, undertone of optimism.

Thurs. May 31—Speculative tendencies are pronounced, but efforts to recover are not likely to meet with much success.

STOCKS

Commonwealth and Southern (C.W.)—May 23rd, 1929.—This is the horoscope of a stock that may be subject to very wide fluctuations and it may be much in favor during the months of April, May and June. There would seem to be considerable manipulation involved with a horoscope of this kind and it would appear that someone may make quite a considerable amount of money out of this stock in the month of May, but it is not likely to be the public. This is an

(Continued on page 21)

Many Things

BIRTHDATES

Question: Please give me the positions of the planets March the 8th, 1889.

Answer: The positions of the planets for Greenwich Noon of this date were:

Sun 18/09 Pisces.
Moon 4/37 Gemini.
Mercury 21/11 Aquarius.
Venus 3/20 Taurus.
Mars 14/34 Aries
Jupiter 4/57 Capricorn.
Saturn 14/36 Leo.
Uranus 21/14 Libra.
Neptune 29/45 Taurus.
Pluto 4/11 Gemini.

Question: Would you give me the correct date for astrological purposes of a party born in Russia, February 17, 1904?

Answer: February 17, 1904, (old style) would correspond to February 28, 1904 (new style) therefore for astrological purposes your birthdate is February 28.

Question: My Hebrew birth date is Elul 13, 1894, what is my birth date according to the American calendar?

Answer: Your birth date by the American Calendar is September 14, 1894.

BIRTH SIGNS

Question: Will you please give me your opinion as to whether Aries or Taurus is my birth sign. I was born April 19th, 1903, 8:00 A. M., New York City. I have always thought Aries was the correct sign—lately I have been led to believe differently; please advise.

Answer: Your Sun sign is definitely Aries but at the hour which you have given your Ascendant would be Gemini. It is true that the Ruler of the Ascendant (Mercury) is in Taurus, but I certainly would not consider this sufficient justification for placing you under the rulership of Taurus. Therefore I would say that **ARIES IS YOUR CORRECT SIGN.**

Question: Does a person born September 23, 1877, come under Virgo or Libra? The hour of birth of this person is not known. The corrected Ephemeris published by the Rosicrucian Society puts the Sun in 23 minutes of Libra. That means, doesn't it, that the person might easily still be in Virgo? On the other hand the general reading published for Libra in your magazine seems to apply very definitely to the person. Is it possible not knowing the time of birth to know what the rising sign is for this individual?

Answer: The position of the Sun Greenwich Noon, September 23, 1877, is 0:32.20 Libra. This should retain much of the Virgo qualities. However, the Sun would be defi-

nately in Libra unless the Greenwich Mean Time of Birth were very early in the morning of this date; in this connection the place of birth would be an important factor and, of course, the local time of birth would have to be known.

The only method that I know of that determines the ascendant when the hour of birth is not known is that method which is explained on page 57 of the November, 1933, issue of *AMERICAN ASTROLOGY*.

Question: After having a personal horoscope prepared, I read the following "from the time given of your birth, September 3, 1899, 4:30 A. M. (?) at Pine Bluff, Ark. I find that Leo is on the ascendant. Being born in the third decanate of Leo is exceptionally good as you should be able to rule your own Destiny."

Is the above correct? I have always used Virgo as the sign of my birth, that sign seeming to answer my outward appearance in style and taste. The information that has been furnished me in this horoscope on my physical being is entirely different from what I am, but it does fit a person who I know is born under Leo.

Answer: Your birth date would place you definitely in Virgo, but the ascending sign at the hour you have given would be Leo. The ascending sign should give the personal description. It is possible that in your case, this time is inaccurate (I notice you have a question mark after the time as though it were in doubt); in such case the apparent discrepancy that you have mentioned would be accounted for. It is important that people realize that it is really unfair to an Astrologer to give him an inaccurate or doubtful birth hour and expect an accurate delineation in return; one should really be careful about this, otherwise make allowances for it. After all, an Astrologer is dependent upon the information supplied by the applicant.

It will further help the Astrologer to help you if you will in addition give detailed information regarding your present circumstances. We take this opportunity to again remind all who may read this that Astrology is NOT Fortune-Telling, although the ridiculous claim of some Astrologers might seem to indicate such. Your horoscope is a chart of CAUSES only and does not reveal effects (or events); it reveals only your personal (natural) tendencies or inclinations, which in the natural course of events may manifest in a great variety of ways. However, to the extent that you understand yourself—your personal tendencies and inclinations—as revealed by your horoscope, you are in the po-

sition to control and direct the course of events, and determine what events shall be. In other words you may, by the power of your individual Will and privilege of choice decide under what conditions you shall act and thus determine your future destiny.

Your horoscope may reveal the probable future results of present actions, but for this purpose it must be interpreted in the terms of your present environment; we must always go on from where we are.

In determining the sign and degree on the ascendant I usually use the system of Rectification which is fully explained on page 57 of the November, 1933, issue of *AMERICAN ASTROLOGY*, although as explained therein, neither is this offered as by any means the last word on the subject. This method is admittedly incomplete, yet will, I believe, be found to be a valuable aid, especially if used in conjunction with other systems of Rectification.

CORRESPONDENCE

EDITOR—*AMERICAN ASTROLOGY*:

I want to tell you how much good your magazine has really done for me. In the first place, I have read everything I could get my hands on about Astrology for several years, but of course that really was a limited amount of reading.

This last Spring and Summer my husband and I had some serious trouble and I was grieving myself to death over it. I lost twenty-five pounds in a few weeks and could hardly do my work, and I have three children. I was pretty desperate, in fact I would have done anything to bring things to a stop. I happened to see your magazine in the Drug Store I patronize for the first time and bought it immediately. My intuition about our trouble was verified by the articles in the July *AMERICAN ASTROLOGY*. My husband and I both are Aries people. His birth date March 22, 1894, and mine April 14, 1896. We had been married for nineteen years and he had always been so good and true that when my ideal in him fell, it nearly broke my heart, for all that I am broadminded.

However, thanks to your little twenty-five cent booklet, I solved our problem by taking your advice. If once or twice I slipped and disobeyed the orders in the booklet, I regretted it immediately and realized what wonderful advice it all was. I read and re-read it, until finally on July 30 (the date I decided was the right one by studying your directions for Aries) we came to an agreement which was all right for me and was the only right thing for him to do. While what I endured will always be with me, we are happy now and have been for a long while. I have bought your magazine ever since. I shall never be without such wonderful advice again.

When the eclipse of the Sun came August 21, I feared something would happen to my

husband, but instead I got word that my mother was seriously ill and by careful study of your magazine I felt sure I would lose her, which I did, October 25. The affair about my husband (who is dearer to me than life itself) helped me to go through losing my mother, who had been very dear to me. In fact nothing can ever hurt me again like the heart hurt of last summer. If I had been taking your booklet last March, April, May, and June things would have been different I am sure. I recommend your magazine to everyone I know although I don't know very many people here because we haven't lived here for very long.

I read Evangeline Adams' "Your Place Among The Stars" and knew by that of the affliction of Uranus I am under. I have read several other books and articles in magazines and newspapers by her. But I shall always save my back numbers of *AMERICAN ASTROLOGY* to refer to.

Why anyone would do without your magazine when it is so cheap I cannot understand.

So thank you for helping me when I needed help more than I ever did before.

—A Reader.

Ed. Note—The above letter is published by way of illustrating by concrete example the value of the "General Forecasts" published in *AMERICAN ASTROLOGY* when interpreted intelligently and applied. Anyone wishing to communicate with the writer of the above letter may address the letter care of *AMERICAN ASTROLOGY* and it will be promptly forwarded.

COVER DESIGN

Question: November, December figures of charts are dreadfully confusing, November more than December. Dotted lines represent the signs, I surmise; but something dreadful has happened, it is terribly mixed, the Houses and Signs look like a new geometrical problem.

Pisces hangs over part of the 1st and 2nd houses, Aries over the second and third house having a good squeeze. Or is Aries over the 3rd house. Look south on the eastern horizon, the houses have even in this muss of identities suffered an eclipse of some sort. Houses or signs seem to have lost their dimensions and identification. My eyes begin to shiver and shake as I try to figure it out.

Uranus, you tell us is in the sign Aries, but in the map it seems to be in Taurus. Please enlighten my crying ignorance.

Look how squeezed up the 10th house and 11th houses are. See the vast spread of the 8th house and 7th house; why should that be so?

The whole figure has lost its proportion or balance. What calamity has brought about such a transformation? Has an earthquake struck heavens and earth? An earthquake has struck our purses, that I know. Perhaps it has

shaken the stars out of their course. As Astrology is a knowledge rooted in the mystery of spiritual laws, perhaps the perfect Harmony of Heaven has been tremendously disrupted and this life-force within the stars has struck a discordant note, hence the configuration of earth and heaven manifests this discord I suppose is the displacement of signs and houses as well as in the spiritual emphasis of our lives (Ed. Note—that's a thought).

I have no ephemeris. Please at an early date instruct us how to place signs, houses, planets, etc., and show how to arrange all this mysterious knowledge.

Please, when you raise our desire to such a pitch you must be equal to the occasion and be able to satisfy it.

Answer: As explained on pages 19 and 20 of the December, 1933, issue of AMERICAN ASTROLOGY, the new design includes the horoscope of the current Lunation and differs from the ordinary chart only in the fact that the planets are represented pictorially instead of by symbol alone. The dotted lines mark the cusps of the Houses. The heavy black lines mark the cusps of the signs.

The difficulty that you have experienced with the variation in the dimensions of the various houses is due to the fact that owing to the inclination of the Ecliptic or Sun's path to the plane of the Equator, the signs of the Zodiac are viewed from any point on the surface of the Earth at various angles, which angle of vision may include more or less than one complete sign of the Zodiac in any one house. A full explanation of this could necessarily appear rather technical to one not thoroughly familiar with Astrological terminology. We do not consider it advisable to attempt to furnish such an explanation here, but I can assure you that these house divisions as given on the cover design, are correct for the latitude of New York.

Strictly speaking, the cusp of the 10th house should be indicated as directly overhead, in other words the line marking the cusp of the 10th and 4th houses really should be perpendicular, but to do this would necessitate moving the line of the horizon (east and west) off the horizontal. Since the Ascendant is by far the most important factor in a chart of this kind and because I wish to make it clear to the reader just what sign and planet IS rising at time of the Lunation I have taken the liberty of keeping the (eastern and western) horizon on the horizontal, even though this does involve shifting the 10th house cusp off the perpendicular.

ECLIPSES

Question: Would the Eclipse of August, 1933, or that of February 1934, in any way affect my chart. Birth date, January 17th, 1886, 11 A. M., Bertrand, Neb.

What is meant when the term aspect is used

and no definite term is given. For instance, Venus was in aspect to Saturn when I was born, I cannot figure how the aspect has either hindered me, or saddened me. I would like to know how to handle that.

Answer: The eclipses as above referred to should not affect you particularly since they do not make any direct contact with your horoscope.

The term "aspect" when used without any designation as to the kind of aspect in question, if it means anything could be interpreted as the effect of one planet modifying the other in a general way, as for instance, would be the case where these planets are in conjunction. However, in your case Venus is trine Saturn and this may be accepted as a harmonious configuration and as your Venus is in Pisces this could give the inspiration of an unselfish love and devotion to duty. It indicates that happiness (Venus) may be found along the line of duty or Necessity and in the unselfish service of others (Saturn). Since Mercury at your birth was so placed as to oppose this Saturn, Venus in Pisces trine Saturn and sextile Mercury should operate as a powerfully harmonizing influence in your life and I should think a person with such a configuration should be highly regarded by virtue of a spirit of helpfulness and unselfish devotion to the interest of others, and should find a large measure of success and happiness as the result of these qualities. Such a person should know that the greatest happiness is found in the happiness of others.

Question: What major effects will I feel from the Eclipse of August 21st, 1933?

Answer: With regard to the August Eclipse in relation to you, I notice that the strongest aspect it formed in your chart was in opposition to your Venus. I have found that an Eclipse in conjunction with a planet tends to weaken the effect of that planet; it is just as though that planet were, for the time being, removed from the horoscope entirely. If the person so affected does not comply with these requirements and attempts to force issues along lines indicated by that planet the results are usually disastrous. This calls for much self control, because the Eclipse also tends to make the person conscious of lack with respect to the planet it conjuncts and presents definite problems which appear to call for definite and immediate action.

On the other hand I find that when the Eclipse opposes a Natal planet the opposition operates in exactly the opposite manner. It places the pressure upon the opposite point to that of the planet, tending to depress that point in the chart, with the result of intensifying and greatly increasing the power of the planet it opposes; therefore, I would say that this Eclipse would probably upset your emotional balance and that during the period that this Eclipse is in effect, you would notice

that your Venus in Aquarius and the tendencies it indicates would probably be more pronounced than has been the case for some time, although it is true in 1914 there was also an Eclipse and in practically the same degree (when you were 21).

EPHEMERIDES

Question: Will you please advise what in your estimation is the best ephemeris to buy? Do you recommend the German Ephemerides? Why does the Raphael Ephemeris cost about twice as much? Which is the easiest to handle while making up horoscopes?

Answer: I believe you will find the German Ephemerides very accurate and certainly the least expensive. On the other hand Raphael's Ephemeris is much more complete and gives a great deal more information which no doubt accounts for the great difference in price. For professional work I personally prefer Raphael but I believe that the average student probably finds the German Ephemerides quite sufficient for most practical purposes.

JUPITER

Question: According to my birth date (August 17, 1875), Jupiter is 26:34 degrees in Libra. The transiting Jupiter will come in conjunction with my natal Jupiter this year; when will this conjunction take place?

Answer: Accepting the Greenwich Noon position of Jupiter on your birth date, the transiting Jupiter will conjunct your natal Jupiter right around midnight of September 24, 1934.

Question: How will the transiting Saturn in Pisces in my M. C. opposing Neptune in Virgo in my fourth house (1936) affect me? Birth date September 29th, 1887, Bellefonte, Pa., 10:50 P. M.

Answer: In my opinion this transiting opposition need not necessarily be destructive in effect in your case, owing to the fact that your natal Jupiter will be trine to the transiting Saturn and sextile the transiting Neptune. For a further explanation of this point you may refer to page 21 of the January issue of AMERICAN ASTROLOGY wherein a similar question was dealt with.

LEGAL AFFAIRS

Question: In your Daily Guide at times you refer to "Legal Affairs," saying whether the day is either good or bad for them. Will you please tell me just how is a lawyer to construe that reference since all of his affairs are legal affairs. Does it refer to legal affairs in which the subject is personally interested?

Answer: Naturally the reference to legal affairs which appears in the magazine frequently would apply to legal affairs in which the subject is personally interested—directly—to a much less extent would it apply to legal affairs in which the subject's interest might be solely that of an attorney handling the

case, this would have to be largely referred to the professional department (10th house). Generally speaking, of course, the department governing legal affairs also governs Courts of Law and this department would be significant of your legal opponent in the case; that is to say, in the case of an attorney this department would represent the attorney of the opposing side; in the case of the plaintiff or defendant, this would represent the plaintiff or defendant of the opposing side. In order to get the maximum benefit from such advice, the attorney should select a day which is favorable for legal affairs for his client, and favorable for professional affairs for himself, although, of course, some consideration should also be given to the Legal Department by an attorney who wishes information as to the attorney of the opposing side.

NEPTUNE

Question: I have Neptune in my seventh house (solar) and at birth, I had Saturn in Virgo in my seventh solar house, which would make a conjunction of the Transiting Neptune and my natal Saturn involving the seventh house. What do you think this would indicate?

Answer: The effect of such a conjunction cannot be read as a separate aspect, the entire horoscope must be considered in reading the effect of any one configuration, which would depend upon the position of the other planets in your horoscope. However, basically, Saturn conjunction Neptune is a symbol of practical Idealism or Practical Mysticism. That is, insofar as Saturn qualifies Neptune. On the other hand, when we consider Neptune as modifying the Saturnine influence this may give mysterious obstacles or obligations and delays with regard to the matters indicated by the house position and involves circumstances, which are in some respects peculiar, weird or uncanny. Such a conjunction might present a very definite problem involving a choice between Duty or Necessity—a conflict involving ideals and personal happiness with social obligations. It is certainly an aspect that calls for a very high degree of unselfish devotion and a very well developed conscience.

NUMEROLOGY

Question: With reference to the article "1934" on page 2 of the January issue of AMERICAN ASTROLOGY, I was interested in Ripley's statement (if it is true—he offers to prove it) that 1934 is really 1940. Ripley states that extensive research has established the fact that we are just six years behind in our calendar.

"Fourteen centuries ago a monk by the name of Dionisius Exiguus, who is responsible for our modern calendar, made a mistake of six years in his calculations. This mathematical mistake set the calendar back six years,

consequently the coming year is 1940 and not 1934."

What happens to the reading of this year, as 1934 equals 8?

Answer: Well—1934 still equals 17 and 17 still equals 8. This question is really based upon a misconception of fundamental principles underlying Numerology so-called.

The secret of the power of names and numbers seems to be in the magic power of mental association and in the established fact of thought vibration. When anyone thinks of anything it is in response to certain finer (Astral) vibrations of a definite frequency. When we think musingly (receptively) we are tuning in—our receiving set is working, this is Moon thinking, or Mooning if you like. When we think creatively we are broadcasting (using our Mercury), but, in any case the important fact is that when we think of any person, or name, or number, we are tuning in and relaying to other people a thought vibration of a definite frequency. Now, when we think of a certain person we naturally associate him or her in our mind with a certain name, possibly also a house number in addition to many other facts which we have relative to that person, each idea that takes form in the mind having its vibratory wave length which may or may not be in harmony with the wave frequency of the person in mind. With respect to names, for instance, there are many people carrying around ill-fitting names, which are just as unsuitable as an ill-fitting suit of clothes—and just as uncomfortable.

When the thought frequency of a name is out of harmony with the personality with which it is associated a destructive discord is set up, which upon being relayed to that person has a destructive effect upon his mind. By the same token a harmonious association of this nature would tend to build and strengthen that person mentally. Of course, merely one person, thinking of another individual would not have much effect, but, when one considers this influence compounded and multiplied by the combined thoughts of all who may happen to be associated with the individual in question plus his own destructive effect upon himself in the same manner, one may see that a name or a number may indeed become a most potent factor in the success or failure of an individual. Particularly is this true of anyone who may be engaged in public work, where many personal contacts are made. It was Israel Zangwill who called our attention to the fact that the names of publishers in the majority of instances end with the letter "N" and that other letters (as end letters) were similarly associated with other vocations.

It would seem reasonable to an Astrologer that the most perfect system of numerology

would be that which correlated letters and numerals with Astrological symbols—a combination of Astrology and Numerology—Astro-Numerology, which is in fact Kabbalism.

Now when we consider the number of a year from this point of view, one may readily see that there is really nothing basic in such a number. The year that we know as 1934 might be computed by various methods and be known by a great variety of numbers according to the form of calendar used. This is in fact the case, since the year 1934 corresponds to 7442-7443 of the Byzantine Era, 5694-5695 of the Jewish Era, etc. The important fact with reference to any year is that a given number is generally accepted by a social group and the number so accepted will furnish a key to the cyclic progression of the social group that accepts that number. In the last analysis it is the direction and quality of thought that determines the course of events and it is in the realm of mind that the material world must first take form. From this point of view therefore, cyclic numbers may indeed be valuable as indicators of the course and progress of evolution in any particular social cycle.

(Continued from page 16)

under cover activity and where the money goes will be nobody's business, but that of the fellow who gets it.

International Telephone and Telegraph (I.T.T.)—June 16th, 1920.—This stock should be a very good investment around the middle of May. Its progress during the summer months should be very satisfactory, the month of June, August, September and October should mark major moves with advancing prices. With reference to the month of August, the first half of the month is most favorable, the last of August might bring a sudden, sharp and relatively extreme decline; this, however, should be of short duration.

Bellanca Aircraft, December 31st, 1927.—This is a stock which should come in for a large share of the benefits that may be expected to accrue to all aviation stocks during the month of June 1934, and appears to represent quite a good investment for the immediate future.

Reynolds Metal Company, July 18th, 1928.—This does not look so favorable, from the Astrological point of view, and, in our opinion, does not represent a very promising investment at this time. It is likely that certain very radical changes may take place during the summer months, which may have quite a depressing effect upon this stock.

(Continued from page 15)

Taurian natives in a manner to force a sudden and drastic change in the personal circumstances. It may, however, generally speaking be accepted as the promise of victory and success in a personal enterprise.

MARS IN GEMINI

June 3 to July 15, 1934.

SECOND HOUSE

In financial matters you will be aggressive and ever-ready to fight for your rights, there will be a tendency to take what you want by force and a disinclination to use persuasive or diplomatic methods in your business affairs. You must guard against a tendency to be reckless for if allowed free reign Mars will scatter your money to the four winds. Mars believes that money was made to spend or at least that it should be put to work, so he keeps it moving when he does not invest it and thus gets rid of it in a constructive way; then he may be outrageously extravagant and get rid of it anyway. In any case the ultimate result is the same, he puts it back into circulation.

The key to prosperity for anyone with Mars in this position is wise investment. Where you keep up payment and keep yourself constantly under an obligation. Since he will get rid of his money in any case, it is much better to get rid of it in this way, where he at least has a chance of getting it back. Yet even in your investments you must guard against recklessness and not assume undue hazards. Mars does like a game with a risk involved, in fact, wherever this planet is he always exacts the penalty of a risk. However, he does not deny the right to keep these risks within reasonable limits. In this connection it might be profitable to consider the distinction between a gambler and a speculator, which is given on the authority of a successful wheat speculator, "A gambler creates his own risks, a speculator accepts the risks that already exist."

However, it must be said of Mars, that his courage never fails, he is a good loser and if he should experience a crash he will start in immediately to build a new fortune on the ruins of the old.

MARS IN CANCER

July 16 to August 30, 1934.

THIRD HOUSE

This will greatly increase your mental powers at least by way of making them more accurate and dynamic. Mars in the third house is usually aggressive in his manner of expression, but care must be taken to avoid unnecessary bitterness and a passionate destructive in both thought and speech. This will confer much mental courage and resourcefulness and also tends to jump to conclusions or rush blindly into situations and make many impulsive, ill-

considered changes.

This department also governs contacts with relatives, near neighbors and intimate friends and under the influence of Mars such contacts are likely to be marked by considerable strife and contention, which in some instances might end in violent estrangements. You may find that the more intimate you become to anyone the nearer you always approach to a quarrel, therefore, if you want to get along with people while this transit is in force don't get too close. It also may help considerably if you put a bridle on your tongue and do not talk so much, use that Mars energy to do some real constructive work on the mental plane, for that is the real purpose of this configuration. It takes two to make a quarrel and it is only when Mars follows his natural inclination to interfere with the rights of others that he gets into trouble.

This also gives a great danger of accidents while traveling through recklessness, however, it may combine work with traveling and is a very helpful influence for anyone who may work in connection with lines of transportation or communication.

MARS IN LEO

August 31 to October 17, 1934.

FOURTH HOUSE

This may not be such a helpful influence and may be rather difficult to deal with for the reason that Mars in its transit through this department of your life must necessarily oppose Saturn in your mid-heaven. In order to get the best effect out of this transit it is only necessary to remember that Mars primarily demands action and, of course, if not kept busy in a constructive way his dynamic energy will be devoted to destructive purposes. Therefore it is essential that a person with this configuration keep busy.

This may infuse an element of violence into your domestic life and may generate many conflicts in the home, particularly if the tryannical domineering tendency of Mars is allowed to go uncurbed. This also may force a change of position through an inability to get along with those in authority. However, we feel that much of this may be due to a selfish attitude and impatience, this situation calls for cooperation, and it may be to your advantage to agree with necessity, obey the commands of duty and make concessions for it does not appear that those in power are likely to change their attitude very soon.

MARS IN VIRGO

October 18 to December 10, 1934.

FIFTH HOUSE

This is likely to make you very touchy, high strung and extremely ambitious and
(Continued on page 32)

Message of the Stars

For May 1934

BASED UPON MINOR TRANSITS AND MUTUAL ASPECTS TRANSITS

Mars in Taurus—April 25th to June 2nd

It is the tendency of any planet to act as centers for the focalization and manifestation of the sign of which that planet is a natural ruler. In fact, it may be said that the signs are relatively formless, unorganized and of almost infinite potentiality, whereas the ruler of the sign may be considered the germ or seed of the peculiar destiny of the sign it rules, which grows and manifests in a form conditioned by the sign in which the ruler may be placed and in accordance with the aspects this ruler may receive at any given time.

Thus, Mars may be said to be the animating spirit and germinating principal of the sign Aries, manifesting in various forms and bringing out various phases of the Aries nature, as it transits through the twelve signs of the Zodiac. In order to make this point quite clear, we might further emphasize the fact that in a sense, each sign of the Zodiac contains within itself the potentialities of all the signs and which particular sign may be brought out and emphasized at any time will be determined by the position of the ruler of the sign in question. While Mars is in Taurus, we shall expect the possessive and acquisitive qualities of Aries to take precedence, without, however, in any way decreasing or weakening the naturally self-assertive and aggressive tendency of Mars. As a matter of fact, these aggressive urges will be merely applied to the solution of problems and to activities peculiar to Taurus, which symbolize the possessive urge and tends to accumulation.

Taurus is the natural ruler of the second house and is basically correlated with all second house affairs. This has specific reference to finances and financial operations.

Mars, in this department, will, therefore, incline people to be aggressive in the accumulation of property and possessions. A second house Mars does not believe in waiting for money to come to him, he prefers to go out after it and if necessary will

take it by force. He believes that money was made to use (we were going to say "burn" but, that does not necessarily follow) therefore, Mars in Taurus is not likely to favor a large accumulation of idle funds.

This transit will, no doubt, result in a great increase of business activity and the average earning power should increase, however, even though the average income might increase, and the circulation may be greatly stimulated it cannot be said that this influence favors security and it may be accepted as indicative of unusual hazards in financial matters particularly may this be the case under the square of Mars and Saturn, May 30th.

This will, no doubt, stimulate investments and particularly in industry and manufacturing concerns and in fact, there is only one possible manifestation for a second house Mars and this must involve free expenditure of money. It is an influence that puts money to work, there is nothing of the Saturnine thrift about Mars, he is on the contrary outrageously extravagant as a rule.

In consideration of the fact that Mars is in the financial sign at the time that it squares Saturn, we could be justified in expecting that particular aspect (May 30th) to manifest as a financial crash of some kind and to a degree conditioned by the particular circumstances under which it may operate.

This may, of course, be interpreted individually or collectively. Not only does it sound a warning of danger insofar as the economic structure of society in general is concerned, but, individuals may also accept this as an indication that much caution, patience and prudence is called for in the management of their personal business affairs. Study the analysis of Mars Square Saturn which follows in the analyses of aspects and try to avoid the dangers incident to this transit.

VENUS IN ARIES

May 6th to June 1st.

In our analysis of Mars in Libra commencing on page 27 of the April 1933 issue of *AMERICAN ASTROLOGY*, we brought out the point that a planet in the sign of its detriment is, as a rule, more active insofar as objective manifestation is concerned, more powerful to produce effect than in any other sign. This explains why Venus in Aries, the sign opposite to that which Venus rules (Libra) usually has a very active social consciousness. Venus in this sign is a very friendly sort of person. The Lady of Love becomes rather masculine—a sort of a “Tomboy” in this sign. Full of life and ready for anything anywhere, any time. Prone to throw a wild party occasionally—or even oftener. Likely to be much more sympathetic at heart than she is in manner. Very sensitive and easily angered, but soon pleased again. A great love of “fun”, adventure and amusement. Not exactly refined—as we think of Venus—the humor may not always be of the drawing-room type, but on the whole insofar as it blends the charm of Venus with the energy and courage of Mars this is a very good position. It intensifies any tendencies toward ROMANCE, and Men under this influence are never backward in approaching the Lady of their choice. Even though she may only be a temporary choice—no one would ever be able to tell the difference. We consider Venus in this position to have much of the nature of Uranus and like Uranus she often lacks “continuity.” Venus in Aries does not appear as a very important factor until well into April, but then—about June 2nd—under a conjunction with Uranus she may produce THE romance of the year.

MERCURY IN TAURUS

May 3rd to May 16th.

In consideration of the aspects received by Mercury during this transit “The Messenger of the Gods” and “Guide of Travelers” may lead many prospectors to the foot of the rainbow, but with a square to Saturn involved, we doubt that they will find the “pot of gold”, which is popularly supposed to be there.

During the major portion of this transit, however, general business should show marked improvement, changes, journeys, all forms of intellectual activity would be well-timed and have quite fortunate results. This is a time when the dreams of Mercury in Aries tend to materialize. In Taurus, Thought (Mercury) becomes concrete. (Taurus). The significance of any planet in Aries was rather beautifully expressed

by Edwin Markham though the astrological correlation was unintentional:

“It is a vision waiting and aware.”

Then what must happen as a result of the continued transit into Taurus—

“And you must bring down, oh men of worth.

Bring down the New Republic hung in air

And make for it foundations here on earth.”

Mercury in this sign (Taurus) indicates a time when people in their mental reactions are slow, deliberate, kind, gentle, cheerful, sociable and in manner of expression quite charming, in fact, but—firm. It is the time when people can be led by Love, but cannot be driven.

MERCURY IN GEMINI

May 16th to May 31st

Throughout the major portion of this transit Mercury forms some very harmonious aspects and should, therefore, be quite a constructive influence with special reference to the affairs ruled by Mercury.

However, it so happens when Mercury first enters Gemini around the middle of May the first aspect it forms is a square to Neptune. For a few days, therefore, we may expect the more destructive and unreliable phases of both planets to manifest. Under a favorable aspect from Neptune to Mercury we may receive the gift of inspiration, but under an affliction while the same degree of inspiration may be present it is likely to be devoted to anti-social or selfish purposes and an increased sensitiveness of perception may be used to achieve a selfish end. The consciousness of humanity becomes quite receptive to unhealthy influences, the intellectual perceptive may be distorted and those individually susceptible thereto, may become more than ordinarily deceptive and unreliable. People are cunning, fanciful, worrisome, morbidly sensitive, lacking in self-confidence and easily discouraged under such an aspect, the result may, therefore, be quite depressing in a general way, though for a limited period—scarcely more than a few days.

Following this affliction to Neptune, that is to say following May 21st, Mercury progresses into some very harmonious configurations and as a result the natural cleverness of Mercury and Gemini may be brought forth to the betterment of conditions individually and collectively. This marks the last week of May as most favorable to those engaged in any form of intellectual activity, traveling, writing and in the social sense a fortunate and progressive period for all industries and organizations that have to do with these matters.

ASPECTS**MERCURY SEXTILE SATURN****MAY 1ST****Keynote—Organization****MERCURY CONJUNCTION URANUS****MAY 1ST****Keynote—Originality**

These two aspects occurring on the same day preceded by the Sun—Neptune trine of April 30th and followed by a trine of Mars to Neptune, May 5th, marks the last week of April and the first week of May as being in a general way harmonious and progressive.

This period should provide opportunities for the settlement of disputes and inasmuch as in the solar horoscope of this period these Mercurial aspects happen to have a 12th house implication, we shall expect the Labor troubles that have characterized the past few weeks to quiet down and a much more settled state of affairs should prevail.

Mercury sextile Saturn is an aspect that tends to a serious common-sense point of view and promotes constructive thinking. It should have a steadying influence upon general affairs, tending to well organized methods and manifestation of the best qualities of both planets. Those in authority, who have piloted the ship through the troubled waters of the past few weeks and who have labored hard to perfect an efficient organization, may now have the pleasure of seeing a well constructed machine in as nearly perfect function as one may reasonably hope for in this world of imperfection.

The **CONJUNCTION** of **MERCURY** and **URANUS** on the same day, is likely to make these developments in some way sensational or unusual. The major sextile of Uranus and Saturn in force throughout the major portion of 1934 is likely to be brought to the surface in a very decided manner as Uranus finds expression through Mercury. This would seem to indicate that any mutinous or rebellious elements that may have been active prior to this time may find some point of agreement with the more conservative forces in the House of Authority.

Since Mercury forms these aspects in and from the twelfth house (solar) it is probable that the developments incident, thereto may at least in the social sense have something to do with Labor problems. We would expect this to provide an opportunity for agreement between organized Labor and Governing bodies. The advent of A New Leader in the ranks of Labor could be expected with the result that the chaotic conditions which may prevail in the Industrial world immediately prior to this time may be corrected and a well organized plan for constructive activity brought forth. These aspects incline to some very radical changes in Administrative bodies insofar as

such may directly concern Industry and we may expect new legislation more acceptable to the workers of the world. Of course, it must be understood that in these general analyses of the aspects such are not referred to any specific locality and they must be interpreted as applying in a general way individually and collectively. Those responsible for social welfare and National progress may interpret them in a social sense, whereas individuals faced with similar problems in regard to their personal affairs may consider these aspects as also applicable individually.

This is a forceful, colorful, dramatic and exceedingly ingenious Mercury. The Will Power of Uranus combined with the intellectual cleverness of Mercury and both stimulated by the aggressive urge of Aries, is likely to produce some very startling developments—a great change—for the better. It may be stated, however, that any developments of the above nature should reach a culmination not later than May 13th, if the most satisfactory results are to be obtained. In fact it might be stated that May the 12th should bring a final settlement of these matters for the time being. Therefore, the period from April 25th to May 13th may be characterized as a relatively harmonious and safe interval during which differences may be ironed out and important matters settled and definite progress may be made along conservative lines with ultimate security.

MARS TRINE NEPTUNE—**MARCH 5TH****Keynote—Inspiration**

This is fundamentally an aspect of practical idealism—practical helpfulness and philanthropy. It also inclines strongly to speculative enterprises which under such a configuration should be successful.

This should provide a powerful stimulus to general business, banking, speculative investments, entertainment enterprises and navigation, particularly aerial navigation. New ventures involving an element of romance or idealism may be commenced with fortunate results and hazardous undertakings may be carried through with safety.

This is a powerful and dynamic inspirational force released when Mars and Neptune are harmoniously configured. This inspirational influence is, however, not so much mental as it is emotional or physical and is best applied to practical endeavors, which is to say under action—physical activity. Therefore, such a configuration is most helpful to those who work (in a physical way) and whose lives involve an element of danger. Mars always exacts the penalty of a risk, but Neptune in good aspect thereto, affords what might be called "Divine Protection", in other words, this is a time when "Fortune favors the Brave".

In a purely social sense organized Labor Union, Socialistic or Communistic movements (ruled by Neptune) are favored by this aspect and at such times, therefore, ideals and dreams for the betterment, for the working classes are likely to be translated into action and result in a practical realization.

In a National sense the Army and Navy particularly the Aviation department should be benefited greatly by the aspects received by Neptune at this time.

MERCURY TRINE NEPTUNE— MAY 6TH

Keynote—Speculation

This is an aspect that fertilizes the imagination. It is a preeminently creative (on the mental plane) and inspirational. An excellent influence for writers, actors, artists and statesmen. This is an aspect that inclines to successful schemes and subtle maneuvers, by which a commanding position may be won, by diplomatic or under-cover methods. In view of the fact, that this aspect is followed within a few days by a square to Saturn it would appear that whatever these schemes may be they augur ill for those in authority. It would appear highly probable that someone in a position of power and authority, may discover in the near future that he is standing on a very insecure foundation, when we say "someone in authority" we really mean that it behooves anyone who may occupy a position of elevation or responsibility to study this road map carefully. This beautiful highway may lead to the end of a precipice, which, of course, need not be disastrous if one travels with reasonable care and has a good set of brakes. We do not want to be a "kill-joy", but it is a fact that most of the troubles that beset mankind are due to the fact that when fortune smiles we are so prone to forget that fortune can also frown, hence during a harmonious period, neglect to hold a reserve in preparation for the winter of adversity that always follows the summer.

In an aspect between Mercury and Neptune there is considerable militarism at least, in thought or undercover and this is a very helpful influence for military commanders tending to bring such into prominence. It also inclines to the successful large scale financial operation and schemes of various kinds; probably the Market will do some stratosphere flying about this time and then take a bump along the middle of the month. The financial correlations of this aspect are likely to take precedence at this time considering the sign and the house positions of the planets; this will promote free discussion of Monetary and financial problems and will incline people to speculation and speculative enterprises in general.

MARS CONJUNCTION MERCURY MAY 8TH

Keynote—Dexterity

This is when Mars speaks and Mercury gets busy; the result should be plenty of action in intellectual and commercial affairs. When Mercury becomes angry and Mars becomes talkative, we have a perfect setting for an argument and with Mercury rushing along to a conjunction of the Sun and then to a square with Saturn all within one week it would seem that this is likely to be quite some argument.

Mercury signifies writers, speakers, publishers, travelers, lines of transportation or communication and in fact all activities which may be classified as intellectual and which involve expression of thought, including also commercial affairs, insofar as it establishes a link between the producer and the consumer. That is to say it is the connecting link between supply and demand. Mars is the planet of war, industry, manufacturing and in general physical activities—anything that involves the use of force or in the extreme violence; therefore, such as might call for physical strength. Thus, in a social or national sense we consider Mars the significator of the Army, Navy and Industry in general, but with particular reference to the working classes and also public health. With special reference to accidents, injury through violence, infections, diseases, fevers, etc.

Now when Mercury and Mars come together and especially if there may be any cross aspects involved as at the present time, we may expect much public excitement, great discontent among the laboring classes, violent disputes in political circles, unusual activity in Courts of Law and accidents in connection with transportation. The newspapers should have plenty of headline material at this time and there should be no lack of sensational headlines.

Specifically with reference to United States, we may expect some rather sensational legislation directly concerning the financial policies of the country and in Congress there is likely to be some spirited debates regarding these matters, with the President applying much pressure to force the measure. Whatever the exact form of this may be, it would appear that this is one month at least when those in authority may win.

SUN CONJUNCTION MERCURY MAY 12TH

Keynote—Regeneration

Again we have another of those very interesting and powerful configurations, which seem to exert such a potent influence upon the affairs of men, probably for the reason that it operates principally through the mind where all things have their beginnings.

For a general analysis of these solar conjunctions with Mercury of which there are usually several each year the reader is referred to page 20 of the March issue and page 30 of the January issue of AMERICAN ASTROLOGY.

We find seven of these conjunctions during 1934, but three of them acquire special significance by reason of the fact that they occur in conjunction with a Lunation. That of January 20th, May 13th and July 11th and of these three we consider this forthcoming conjunction of May 13th the most significant for the reason that the Sun and Mercury will, at that time, have very nearly the same declination, which should greatly intensify (concentrate) the power of the conjunction. It cannot be said that this particular configuration holds out much promise of immediate progress, on the contrary it would appear to be indicative of a rather dangerous point on the Highway of Life. The conjunction occurs in close square to Saturn, without any helpful aspects to speak of. This is likely to mark a sharp reversal in general conditions, business and otherwise, this is when the brakes may be jammed on tightly and suddenly. For those in positions of power and who depend for their success upon public approval, it may bring a disastrous reversal of fortune—the crash of a structure of achievement. The effect upon business conditions is likely to be quite depressing, and from this point of view, it probable that the market may advance to a high point during the first half of May, then crack suddenly, and completely at this time, probably as a result of the failure of a governmental program with special reference to the monetary situation.

MERCURY SQUARE SATURN MAY 15TH

Keynote—Pessimism

This is an aspect that presents difficulties, delays, obstructions, etc., in the way of those who travel, write, or are engaged in other forms of intellectual expression. An unfortunate influence under which to travel, sign contracts or papers of any kind and conferences for the settlement of disputes are likely to be abortive.

It may be said that all of the aspects during this week seem to be cast in a minor key and generally speaking the indications are that we may at this time arrive individually and collectively at a turn in the road and a great change may take place. The change may be negotiated safely only if adequate preparations are made in advance—"forewarned is forearmed!"

VENUS OPPOSITION JUPITER MAY 18TH

Keynote—Excess

If there is one aspect which is definitely a symbol of "Excess baggage" this is one. This is an aspect that accumulates to a

degree out of all proportion to actual necessity and clogs the arteries of life with the eventual result that circulation is impeded. If not stopped altogether and in a general and individual sense we have all the evils incident to such excess, accumulation of useless material. Structures, whether of achievement or otherwise tend to become top-heavy and topple over, in short, all the difficulties that may arise from such an aspect may be considered as due to overloading in some way. This sounds a warning to those engaged in speculation and businesses connected with investments, the top might roll off the price structure at this time and it certainly calls for a very good foundation for whatever may be attempted.

It is the opinion of this writer that Jupiter specifically rules the weather to be followed at this time by an uncommonly heavy rainfall in those localities specifically effected by this aspect.

In a purely individual sense, this aspect sounds a warning that more temperance and prudence than is natural is called for at this time. A good sense of values and a severely practical attitude may enable anyone to avoid the heavy losses that might otherwise result from such a configuration. A good time to remember that good in excess becomes evil.

SUN SQUARE SATURN—MAY 19TH Keynote—Depression

This aspect symbolizes very well the inevitable aftermath of an affliction between—"the morning after" with nothing left but a headache and—perhaps—some dirty dishes.

The Sun square Saturn is distinctly a stabilizing influence, it tends to security, it puts on the brakes and it brings us down to earth, where we may once more feel the solid earth under our feet. The trouble with an affliction of this nature is that it brings us down so suddenly that the results may be disastrous, sometimes the machinery of life cannot stand the strain and breaks down under the jolt. Moves, changes and decisions, resulting from an afflicted Saturn, are usually dictated by fear more than anything else.

In a social or general sense this aspect is directly involved with that department which governs those in authority, governing bodies and those whose position depends upon public favor and is indicative of a development which seriously threatens such with loss of prestige and reversals of fortune.

It would be wise to be very cautious in all matters of public relations. Here is a definite conflict, facing those in positions of power, confronting them with the necessity for making very difficult decisions—an unpleasant situation.

By the time this aspect comes into affect, it will really be too late to change the course of events. Adequate preparations must be made prior to this time. Foundations and structures, material or otherwise, must be thoroughly tested and prepared for any emergency and with such reinforcements as may be necessary. Then when the storm breaks the house built upon a rock shall not be washed away.

Afflictions from Saturn are most severe upon materials (and temperaments) that lack resilience. When the Saturnine pressure (of necessity) is applied, something must give. There are some characters that are like tempered steel that gives (agrees with adversity) and then springs right back as soon as the pressure is released. There are some who fall and are of such brittle composition that they are shattered completely; there are others that fall just as hard and then bounce right back again higher than ever. In a purely psychological sense the distinction is between those who have a sense of humor and those who haven't.

MERCURY SQUARE NEPTUNE MAY 21ST

Keynote Deception

We may expect the Messenger of the Gods under these conditions to appear for the most part as a cunning fanciful worrisome, deceptive schemer, morbidly sensitive, very astute and undeniably clever from some points of view, but lacking in self-confidence and easily discouraged. The consciousness of Humanity will become more than ordinarily Psychic and receptive to unhealthy influences from the inner planes. There may be a general distortion of Intellectual perspective and those individually susceptible to such influences may become more than ordinary deceptive and unreliable. A very unfavorable period for activities or enterprises having to do with matters commonly termed Psychic or mystical. Psychic messages received during this period are likely to be misleading and Mediums unreliable. The same may be said of any message (other than those called psychic) which may be received at this time. Mercury in Pisces under affliction is an unreliable messenger. What you hear at this time is not likely to have a more solid foundation than the "baseless fabric of a vision." Under a negatively Psychic Mercury those of criminal tendencies may bring an unusual amount of ingenuity to bear upon the unprofitable work of devising new ways of making trouble for themselves and others. Peculiar Neptunian crimes—mysterious disappearances, kidnappings, etc.—such crimes as are born of the perverted and financial minds; anarchistic outrages. Also as this is a depressing influence tending to cynicism of a self destructive kind, tendencies toward suicide are greatly

aggravated. In the news of these days we may expect to read of more than the usual number of disasters and possible great loss of Life through Terrestrial and Atmospheric disturbances.

This is an unfavorable time for commencing new ventures of an Intellectual nature and also for Legal Affairs. This, of course, in a general sense, since people will on the average be more than ordinarily prone to self-deception and delusion.

MERCURY TRINE JUPITER MAY 23RD

Keynote—Optimism

This is not an aspect of great power, but it does tend to harmonize conflicts and to promote a more peaceful, quiet state of affairs.

At this time, that is to say following May 18th and throughout the balance of the month, Mercury is very well placed and therefore, promises success to those engaged in intellectual activities and this particular aspect specifically releases inspirational and creative forces for the benefit of intellectual workers, that is to say writers, speakers, teachers, publishers, travelers, salesmen, etc. This will promote progress in educational matters, science, literature and in connection with transportation. Venus is not far removed from a sextile to Mercury, with Mercury later going to a trine with Saturn and sextile to Uranus. The result should be rapid progress in all matters ruled by these planets and specifically with reference to this particular aspect (trine Jupiter) the tendency is toward expansion in the realm of investments; it will facilitate trade; favors those engaged in long journeys and foreign relations. Some very fortunate development in connection with educational matters or the entertainment world should result from this aspect. Therefore, in a general way favors success in enterprises of this nature; it should promote greater freedom of exchange whether such be mental or material.

This should mark an unusually active period in the market of the world throughout these last two weeks of May; the turnover should be unusually heavy and general business may be expected to prosper to a very marked extent. It is an aspect that is basically indicative of free circulation without any special reference to the particular plane on which it may operate. The heart of the world will be strong, active and optimistic, and money, the life blood of business, may be expected to circulate freely. From this point of view, one might consider the Stock Exchange as the heart of the business world, in which case we may expect the market, therefore, to advance to a marked extent under these Mercurial aspects and a rather imposing price structure may be built.

MAY 29TH
MERCURY SEXTILE VENUS
Keynote—Harmony

This is an aspect that promotes general prosperity, contentment and good will, also in a minor way this is favorable for money matters and financial agreements. It is a favorable aspect for those engaged in entertainment enterprises or commercial activities connected with such. It promotes pleasant journeys and pleasing communications. It fertilizes the mind and adds dexterity and cleverness to the artistic faculties, therefore, is most helpful to writers, artists and entertainers. In consideration of the position of Venus at this time, the aspect specifically favors social affairs, the formation of new friendships and in a national sense should promote harmony within Legislative bodies.

MARS SQUARE SATURN
MAY 30TH
Keynote—Conflict

The aggressive forces of life are likely to meet with obstruction and restraint against which they may rebel violently. The result might, therefore, be a violent manifestation of the criminal or other destructive tendencies of humanity, which might take form as a crime marked by unusual brutality. In consideration of the position of Mars, in the solar chart of this period, this aspect may be said to constitute a serious menace to public health and welfare in general. This aspect tends to combine the two worst qualities of both planets—hate and fear—a deadly poison—psychologically or otherwise. Under the restraining influence of Saturn, Mars tends to act in a very erratic and explosive manner; in the horoscopes of those specifically susceptible to these planets it tends to great extremes of temperament and sharply contrasting moods—great enthusiasm and activity is followed suddenly and for little apparent reason by moods of equally extreme depression and inactivity. In a sense this aspect operates almost like Uranus alone, in its tendency to eccentricity and unpredictable action. Probably one of the greatest faults engendered by this aspect is that of impatience: practically all of the evils incident to an affliction between Mars and Saturn are due to an inability to work and patiently wait for results. Saturn tries to organize and discipline the activity of Mars and Mars thinks he is merely being interfered with and will have none of it, but sooner or later (usually sooner) flies into a frenzy of impatience, proceeds to destroy all that has been accomplished. A good motto under such a configuration is that advanced by Professor James in his essay on habit: "Patiently work each hour of the working day and you may safely allow the final result to take care of itself."

MERCURY TRINE SATURN
MAY 31ST
Keynote—Practicality

Any tendencies toward undue expansion or inflation, that might have resulted from the trine of Mercury to Jupiter a few days ago, will, no doubt, be controlled and held within reasonable limits as Mercury moves into good aspect with Saturn, at this time.

Generally speaking, any contact between Mercury and Saturn tends to delay matters to some extent and under any aspect of Saturn the "Music of the Spheres" is usually set in a minor key.

This is a helpful influence, for those devoted to the solution of profound problems and the administration of public affairs. It favors a serious viewpoint on life, promotes deep concentration and close attention to details. Favors serious discussions of important problems and final or binding agreements, and favors those who travel, write or engage in other forms of intellectual expression.

In a social sense this favors new regulations connected with Trade Unions and Transportation. Those responsible for the Administration of Public Affairs may inaugurate new and popular legislation tending to greater stability and security and a closer, more constructive relationship between the various units of government and the various parts of the social structure.

VENUS SEXTILE SATURN
May 31st

Keynote—Consolidations

Both of these planets symbolize an attractive force operating on different planes. The power in itself is basically the same, but the form of manifestation is different according to the plane of consciousness upon which it is effective.

As centers of attraction tending to accumulation of materials, all so called negative planets viz: Moon, Venus and Saturn, are basically constructive in the sense that they tend to build form. But, they do not in themselves result in growth, since growth is the result of the vital energy pushing outward in opposition to the centripetal power manifesting as the power of attraction. Thus, for growth and progress, we must have both repulsion and attraction with the positive repulsive energy just sufficiently in excess of the attractive power to force an expansion of the form without destroying it.

Now when Venus and Saturn, both negative planets, come into aspect harmonious or otherwise, we need not expect rapid progress in the affairs ruled by these planets, the tendency is rather to solidify and secure a form or position already attained. In fact, if these two planets be in mutual affliction the form may become petrified with death as the inevitable result.

The best that may be said of such a form is that it is a "beautiful corpse".

However, at this time with Venus and Saturn mutually harmonious, we may expect pronounced tendencies toward consolidation. This is an aspect that promotes mergers in the business world; in the realm of investment it tends to tone down tendencies to speculation to some extent. There is bound to be a certain amount of profit-taking and short selling even under good aspects between Venus and Saturn. The net result, however, need not be depressing, but the market should find a new price level on more or less solid footing at this time.

Socially, it inclines to the organization of fraternal societies. Nationally, it promotes legislation, specifically calculated to promote peace and improve the living conditions of the people.

Individually, it provides an opportunity for the harmonious settlement of important matters, but it will be noted from the foregoing that this is definitely an aspect of completion and does not necessarily favor the commencement of new enterprises. People in general will incline to a serious view of life under any contact between Venus and Saturn, but when the aspect is harmonious, as in this case, this need not imply unhappiness, but may on the contrary, provide an inner peace and sense of security and in a devotional mind may produce what in the Catholic Religion is referred to as a consciousness of the presence of God.

In these analyses it is our purpose not so much to specify the event as probably resulting from any particular aspect, but rather to indicate the basic nature of the forces involved so that they who read may interpret them in the terms of their own individual lives. With an understanding of the basic nature of the forces that are at work at any given time one is in a better position to derive a constructive result therefrom.

SUN SQUARE NEPTUNE—MAY 31ST

Keynote—Treachery

Any affliction between the Sun and Neptune tends to have a weakening effect in whatever department of life or plane of consciousness it may operate.

It is devitalizing, because it tends to diffuse and scatter the solar energy. In the case of a square, the effect is possibly less devitalizing than in the case of an opposition, but the conflict between the two centers of energy is greater and more violent.

An opposition is more consistent and persistent in action and whatever form of relationship may be adopted in any given situation by the forces symbolized by two opposing planets the tendency is to hold that position with bulldog tenacity. In other words, it is definitely an aspect of deadlock—a deadlocked condition which can only be

released by both sides making definite concessions, which as a rule in human affairs neither side is willing to do.

With a square, however, we have a rather different situation; the two forces appear to work, more or less, at right angles—cross purposes. First one gaining the ascendancy and then the other. It seems to be impossible or at any rate impracticable, for two planets in square aspect to work together simultaneously but the tendency is rather to operate alternately, but if they do succeed in arriving at any sort of a compromise arrangement it will mean that each is deflected from its purpose to a considerable extent and the emphasis will be thrown to a point 135 degrees from each planet. That is to say for a first and fourth house square the point of emphasis would be in the eighth house, whereas as for a first and tenth house square the emphasis would be in the fifth house. In some instances, this might be a point of conflict proceeding out of a square, from this point of view, this particular square of the Sun and Neptune would find its focus in the banking department and the House of Supply.

The tendency is toward an extreme manifestation of both the Sun and Neptune. Those in authority, will, no doubt, meet with subtle (undercover) opposition, secret forces may strive and contrive to subtly undermine those in power; deceptive and treacherous influences must be guarded against by all and especially by those in High Places. When we speak of deception we also imply the greatest danger of all self-deception. Neptune in affliction with the Sun, serves more than any other configuration to establish the truth of the statement "Pride goeth before destruction and a haughty spirit before a fall."

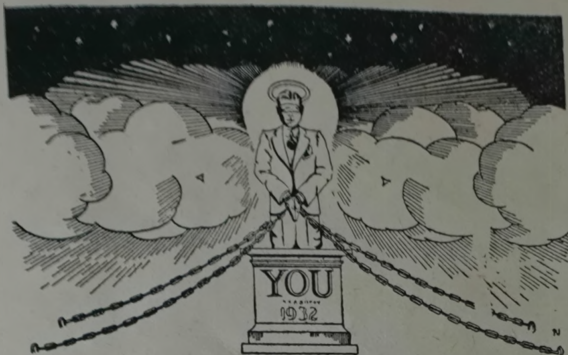
This marks a dangerous period of navigation by air or water and with regard to business affairs it is a very tricky influence. There may be a liberal supply of gold bricks available for those who desire that sort of investment.

MERCURY SEXTILE URANUS

Keynote—Progress

Mercury symbolizes the life force operating on the mental plane—Life of thought—intelligence. Among the various correlations of this planet we, therefore, find the creative faculties of the mind—thinking, ability and powers of expression. By the same token this planet also rules all points of contacts, lines of communication, means, methods and organs by which energy or information is transmitted or received. This includes all connecting links by which various and otherwise unrelated units are united to a common purpose or through mutual understanding. In the human organism this is the nervous system, the senses by which the consciousness contacts the outer world, the organs of speech by which thought is ex-

(Continued on page 31)



Are You An Enslaved God?

Are You Blinded to the Truth?

Are all the world's benefits just beyond your reach? Are you held fast to one position in life, one line of work, one narrow margin of income? Is the great cry of the "SELF WITHIN" for freedom and personal power, choked into stillness by your limitations?

A NEW FREE BOOK

Come, lay your biases, doubt, and hesitancy aside! Learn the truth of **YOUR POSSIBILITIES** as soon as you free the inner self from its prison. Out of the grateful hearts of thousands in many lands have been set aside funds to pay for the printing and mailing of a strange message of Hope and Help. The Rosicrucians, a practical brotherhood of learning and instruction, will see that this book is sent you. It is called "The Wisdom of the Sages" and it tells how the secrets of Nature and of man's mind have been preserved since the days of Egypt's great power—and **HOW YOU**, in the privacy of your home, may study these simple laws to **OVERTHROW OBSTACLES IN LIFE**, widen your circle of personal power and **COMMAND A REALIZATION OF YOUR DESIRES**. Address the Friar below and get a copy of this book at once if you are really sincere in your request.

Friar K. M. M.

ROSIKRUCIAN BROTHERHOOD
AMORC
SAN JOSE, CALIFORNIA

Remember, the Rosicrucian Brotherhood is NOT a Religious Organization.

PROGRESSED MOON

(Continued from page 12)

ing. Situations occur and disappear into thin air, leaving no trace.

MOON square or opposition URANUS. Sudden and unexpected breaks with those who really matter in the life. Trouble through servants and employees. In love affair the native is impulsive and indiscreet, it is possible some disgrace may come through this. Discredit from superiors may cause loss of position. Unfortunate for health for there is the possibility of accidents.

NEPTUNE

MOON trine or sextile NEPTUNE. Excellent aspect for an artist or one of creative ability. Money may come through inheritance. An ocean voyage may be taken. The native is a person of many moods; mystical, religious, poetical. The heart affairs will be with artistic, temperamental people who inspire him. Friendships will be formed with those who delve into the occult.

MOON conjunct NEPTUNE. Affection, music and poetry are necessary to the native. A deep love affair will enter the life at this time. While this love affair will probably be with a most unusual person, it will end tragically. Tuberculosis comes under this conjunction. This may be to the native or to the beloved.

MOON square or opposition NEPTUNE. The native believes and places confidence in the very people he should fly from. Those to whom his trust is given use it for their own ends. Some one will plot to bring him into trouble and disgrace. Slander and theft will be met with. Money is lost in strange ways. Venereal disease or tuberculosis could easily be contracted.

MESSAGE OF THE STARS

(Continued from page 30)

pressed and the brain by which the intelligence of the universe is focused and individualized.

In a Social sense this planet symbolizes the nervous system of the body politic—lines of communication and transportation, the Press by which the National consciousness is expressed and the Legislative bodies by which the intelligence of the Nation is focalized and a National consciousness created.

However, it may be seen Mercury symbolizes a power which is distinctly positive and not in any sense accumulative. The Mercurial force vitalizes and promotes progress, but if not balanced by the attractive influence of one of the negative planets may scatter its force and destroy the forms of thought, and since energy must have a form in which to manifest little of any consequence from the point of view of a concrete expression can occur if the limiting and restraining influence of a form is not present; because "Manifestation implies limitation."

The fact that Saturn in Aquarius is so placed at this time as to harmoniously aspect both Uranus and Mercury, may provide an opportunity for the realization of some definite and practical result from this Mercurial aspect. Uranus will add originality to the activities of Mercury increasing the natural ingenuity and creative ability inherent in this planet.

This favors new literary projects, scientific inventions and discoveries, new legislation, which will be popular and progressive and also success to those connected with the railways, aviation and all similar activities. This is an excellent influence under which to travel, write or make changes.

(Continued from page 22)

favors the rapid development of your enterprises, however, this sounds a warning in the matter of speculation since Mars is so notoriously impatient, always getting in a hurry and jumping in at the wrong time and becoming badly squeezed, otherwise becoming impatient and either forcing the issue or getting out at a loss when if he would allow matters to develop in accordance with the orderly process of the law of growth he might have realized a profit. This counsels much discretion in all emotional affairs, particularly since Mars in transit through this department will tend to bring out in a very positive manner the influence of Neptune, and under the conjunction of Mars and Neptune early in November is likely to bring some very peculiar experience on the emotional plane or through the stimulation of the affection. Neptune can be a very inspiring influence, but is also quite a weird planet and may on occasion be very deceptive. Certainly this conjunction will greatly increase your creative powers and should grant the ability to carry some ambitious enterprise through to a successful conclusion.

MARS IN LIBRA

December 11, 1934 to July 29, 1935.

SIXTH HOUSE

Mars in the sixth house is a quick and energetic worker with remarkable dexterity and is particularly helpful to those who may be engaged in research work and industries that have to do with health and also increases any mechanical skill that there may be. Whatever may be your line of endeavor, no doubt, this will give an interest primarily in the concrete phases of the work—the practical aspects and as this is the house of production this will, no doubt, increase your capacity for production and in accordance therewith your earning power.

Mars here also sounds a warning that temperance in all things is required and gives a liability to trouble with the health inclining particularly to inflammatory complaints. However, these are likely to be necessary evils and ultimately productive of much good and improved health. The illness due to Mars may be dangerous and quite painful while it lasts but this is a purifying influence and the poisons accumulated in the system will be removed, even though drastic methods may be employed.

Master Your Life Through The New GEOCENTRIC ASTROLOGY

Here is the golden key to the management of your career. The following texts teach the practical use of my Map of THE WORLD AND THE HEAVENS and its companion work, the CYCLIC LOCALITY DIAL. In seven easy, simplified steps you learn to cast your locality chart, how to read it, and how to plan the future.

- Lesson 1. The New Geocentric Astrology And You.
 " 2. Casting The Geocentric Birth Chart.
 " 3. Social And Vocational Endowments.
 " 4. Personal Coordination And Management.
 " 5. How To Chart Your Future Course.
 " 6. Personal Forecasting And Planning.
 " 7. How To Locate For Greatest Success.

Test questions accompany each lesson which are successively sent on receipt of written examination in the previous subject, or at one month intervals. Help over obscure and difficult points is freely extended. Examination papers are returned with criticisms and ratings. This is the substance of scientific astrology, and I see you through.

The entire course, including birth-year, Ephemeris, House Tables, correlative textbooks and student supplies for the reasonable fee of

\$15.00

Credit will be allowed for DIAL and MAP if already purchased.

PAUL COUNCIL
New York

849 A President Street, Brooklyn,
Telephone, STerling 3-8802

FINANCIAL LAW OF VALUES

By Sepharial—Now available. Conceded of great merit \$1.75

RECTIFICATION AND PREDICTION

By Champion new system so simple anyone knowing how to erect a horoscope can use \$1.00
 Accurate predictions of life conditions.

100 HOROSCOPES OF FAMOUS

PEOPLE—Champion \$1.00

ARNOLD'S 1934 ASTROLOGICAL GUIDE

Daily table of planetary hours for all purposes—easy to use. Monthly (12) indications for all Zodiac Signs 46 pages. .35

ALPHA-MATHO VIBRATORY Scale Cal-

endar 1934. User's claim 80% selections in \$2.00
 Turf games. Select your own best periods.

A NEW ENCYCLOPEDIA OF ASTROLOGY

By S. R. Parchment, 906 pages.
 Natal Progressed-Horary-Mundane-Medical \$5.30
 Worth \$10—makes Astrology usable.

D. G. NELSON

741 N. Dearborn Street Chicago
 Astrological and Occult Books
 Chicago Representative "American
 Astrology"

Aspectarian

For May, 1934

An HOUR GUIDE for every day, by which it is possible to determine the BEST HOUR of any given Day, for commencing or consummating any specific undertaking.

By acting at the RIGHT TIME, we reduce the chances of error to a minimum. It must be understood that each influence becomes effective several hours in advance of the HOUR given, but decreases in power very rapidly after passing that hour. The extent of this interval varies widely for the various Planets involved. The Hours given may be accepted as a reliable guide if you will time your actions and decisions to be made as closely as possible to the Hour given. If it is not possible to act exactly at the Hour given then a time should be chosen which is Earlier rather than LATER.

Date	Eastern States	Date	Central States	Date	Pacific Coast	Date	Europe	Harmonious	Critical
1	12:13 p.m.	1	10:43 a.m.	1	9:13 a.m.	1	5:13 p.m.	☾ □ ♀	B
	2:57 p.m.		1:27 p.m.		11:57 a.m.		7:57 p.m.	☾ ♀ ♂ ♄	G
	7:33 p.m.		6:03 p.m.		4:33 p.m.	2	12:33 a.m.	☾ ♂ P ♃	
	9:48 p.m.		8:18 p.m.		6:48 p.m.		2:48 a.m.	☾ ✱ ♃	G
2	3:40 p.m.	2	2:10 p.m.	2	12:40 p.m.		8:40 p.m.	☾ □ ♀	B
	5:03 p.m.		3:33 p.m.		2:03 p.m.		10:03 p.m.	☾ ✱ ♃	G
	6:58 p.m.		5:28 p.m.		3:58 p.m.		11:58 p.m.	☾ △ ♄	G
	9:53 p.m.		8:23 p.m.		6:53 p.m.	3	2:53 a.m.	Moon enters Capricorn	
	11:12 p.m.		9:42 p.m.		8:12 p.m.		4:12 a.m.	☾ △ ♀	G
	11:40 p.m.		10:10 p.m.		8:40 p.m.		4:40 a.m.	☾ ♀ P ♄	
3	7:00 a.m.	3	5:30 a.m.	3	4:00 a.m.	3	12:00 p.m.	Moon. 5/28 Capricorn	
	11:35 a.m.		10:05 a.m.		8:35 a.m.		4:35 p.m.	☾ △ ♂	G
	2:01 p.m.		12:31 p.m.		11:01 a.m.		7:01 a.m.	☾ △ ♀	G
	7:20 p.m.		5:50 p.m.		4:20 p.m.	4	12:20 a.m.	☾ △ ☉	G
	11:22 p.m.		9:48 p.m.		8:22 p.m.		4:22 a.m.	☾ □ ♃	B
4	7:00 a.m.	4	5:30 a.m.	4	4:00 a.m.		12:00 p.m.	Moon. 19/50 Capricorn	
	9:19 p.m.		7:49 p.m.		6:19 p.m.		2:19 a.m.	☾ □ ♄	B
	9:50 p.m.		8:20 p.m.		6:50 p.m.		2:50 a.m.	☾ ✱ ♀	G
5	0:06 a.m.		10:36 p.m.		9:06 p.m.	5	5:06 a.m.	Moon enters Aquarius	
	9:42 a.m.	5	8:12 a.m.	5	6:42 a.m.		2:42 a.m.	☾ □ ♀	B
	10:19 a.m.		8:49 a.m.		7:19 a.m.		3:19 p.m.	☾ ♂ △ ♀	G
	4:50 p.m.		3:20 p.m.		1:50 p.m.		9:50 p.m.	☾ □ ♂	B
6	1:28 a.m.	5	11:58 p.m.	5	10:28 p.m.	6	6:28 a.m.	☾ P ☉	
	1:42 a.m.	5	12:12 a.m.		10:42 p.m.		6:42 a.m.	☾ □ ☉	B
	1:46 a.m.		12:16 a.m.		10:46 p.m.		6:46 a.m.	☾ △ ♃	G
	7:00 a.m.	6	5:30 a.m.	6	4:00 a.m.		12:00 p.m.	Moon 18/08 Aquarius	
	8:47 a.m.		7:17 a.m.		5:47 a.m.		1:47 p.m.	☾ P ♂	
	1:56 p.m.		12:26 p.m.		10:56 a.m.		6:56 p.m.	☾ P ♃	
	2:47 p.m.		1:17 p.m.		11:47 a.m.		7:47 p.m.	☾ P ♀	
	8:26 p.m.		6:56 p.m.		5:26 p.m.	7	1:25 a.m.	☾ ♀ P ♃	
	10:48 p.m.		9:18 p.m.		7:48 p.m.		3:48 a.m.	☾ ♂ ♃	G
7	0:48 a.m.	7	11:18 p.m.		9:48 p.m.		5:48 a.m.	☾ ✱ ♄	G
	2:37 a.m.		1:07 a.m.		11:37 p.m.		7:37 a.m.	☾ P ♄	
	3:26 a.m.		1:56 a.m.	7	12:26 a.m.		8:26 a.m.	Moon enters Pisces	
	8:06 a.m.		6:36 a.m.		5:06 a.m.		1:06 p.m.	☾ ♀ △ ♀	G

Date	Eastern States	Date	Central States	Date	Pacific Coast	Date	Europe	Harmonious	Critical
	9:12 a.m.		7:42 a.m.		6:12 a.m.		2:12 p.m.	☾ P ♀	
	8:14 p.m.		6:44 p.m.		5:14 p.m.	8	1:14 a.m.	☾ ♂ ♀	B
	10:26 p.m.		8:56 p.m.		7:26 p.m.		3:26 a.m.	☾ ✱ ♀	G
	11:33 p.m.		10:03 p.m.		8:33 p.m.		4:33 a.m.	☾ ✱ ♂	G
8	2:12 a.m.	8	12:42 a.m.		11:12 p.m.		7:12 a.m.	☾ P ♀	
	7:00 a.m.		5:30 a.m.	8	4:00 p.m.		12:00 p.m.	Moon 15/47 Pisces	
	9:08 a.m.		7:38 a.m.		6:08 a.m.		2:08 p.m.	☾ ♀ ♂ ♂	G
	9:41 a.m.		8:11 a.m.		6:41 a.m.		2:41 p.m.	☾ ✱ ☉	G
	6:54 p.m.		5:24 p.m.		3:54 p.m.		11:54 p.m.	☾ P ♀	
	7:51 p.m.		6:21 p.m.		4:51 p.m.	9	12:51 a.m.	☾ P ♀	
9	4:07 a.m.	9	2:37 a.m.	9	1:07 a.m.		9:07 a.m.	☾ ♀ P ♂	
	8:09 a.m.		6:39 a.m.		5:09 a.m.		1:09 p.m.	Moon enters Aries	
	12:53 p.m.		11:33 a.m.		9:53 a.m.		5:53 p.m.	☾ P ♀	
	2:50 p.m.		1:20 p.m.		11:50 a.m.		7:50 p.m.	☾ ♂ ♀	G
10	6:20 a.m.	10	6:50 a.m.	10	3:20 a.m.	10	11:20 a.m.	☾ P ♀	
	7:00 a.m.		5:30 a.m.		4:00 a.m.		12:00 p.m.	Moon 12/45 Aries	
	10:29 a.m.		8:59 a.m.		7:29 a.m.		3:29 p.m.	☾ ♂ ♀	G
	1:30 p.m.		12:00 p.m.		10:30 a.m.		6:30 p.m.	☾ P ☿	
11	2:22 a.m.		12:52 p.m.		11:22 p.m.	11	7:22 a.m.	☾ P ♀	
	9:54 a.m.	11	8:24 a.m.	11	6:54 a.m.		2:54 p.m.	☾ ✱ ♀	G
	12:03 p.m.		10:33 a.m.		9:03 a.m.		5:03 p.m.	☾ ♂ ☿	G
	2:00 p.m.		12:30 p.m.		11:00 a.m.		7:00 p.m.	☾ P ♂	
	2:24 p.m.		12:54 p.m.		9:24 a.m.		7:24 p.m.	Moon enters Taurus	
	9:56 p.m.		8:26 p.m.		6:56 p.m.	12	2:56 p.m.	☾ P ♀	
12	0:12 a.m.		10:42 p.m.		9:12 p.m.		5:12 a.m.	☾ P ☉	
	7:00 a.m.	12	5:30 p.m.	12	4:00 a.m.		12:00 p.m.	Moon 8/58 Taurus	
	8:12 a.m.		6:43 a.m.		5:12 a.m.		1:12 p.m.	☾ △ ♀	G
	6:11 p.m.		4:41 p.m.		3:11 p.m.		11:11 p.m.	☾ ♂ ♂ P ♀	G
	6:20 p.m.		4:50 p.m.		3:20 p.m.		11:20 p.m.	☾ ♂ ♂	B
	11:43 p.m.		10:13 p.m.		8:43 p.m.	13	4:43 p.m.	☾ ♂ ☉	B
13	7:30 a.m.	13	5:00 a.m.	13	4:30 a.m.		12:30 p.m.	☾ ♂ ☉	B
	8:26 a.m.		6:56 a.m.		5:26 a.m.		1:26 p.m.	☾ ♂ ♀	B
	6:09 p.m.		4:39 p.m.		3:09 p.m.		11:09 p.m.	☾ □ ♀	B
	10:38 p.m.		9:08 p.m.		7:38 p.m.	14	3:38 a.m.	Moon enters Gemini	
14	7:00 a.m.	14	5:30 a.m.	14	4:00 a.m.		12:00 p.m.	Moon 4/21 Gemini	
	4:31 p.m.		3:01 p.m.		1:31 p.m.		9:31 p.m.	☾ ✱ ♀	G
	5:09 p.m.		3:39 p.m.		2:09 p.m.		10:09 p.m.	☾ □ ♀	B
15	2:16 a.m.	15	12:46 a.m.		11:16 a.m.	15	7:16 a.m.	☾ △ ♀	G
	7:00 a.m.		5:30 a.m.	15	4:00 a.m.		12:00 p.m.	Moon 16/42 Gemini	
	5:30 p.m.		4:00 p.m.		2:30 p.m.		10:30 p.m.	☾ ♀ □ ♀	
16	4:47 a.m.	16	3:07 a.m.	16	1:47 a.m.	16	9:47 a.m.	☾ △ ♀	G
	7:14 a.m.		5:44 a.m.		4:14 a.m.		12:14 p.m.	☾ ✱ ☿	G
	9:17 a.m.		7:47 a.m.		6:17 a.m.		2:17 p.m.	Moon enters Cancer	
17	4:33 a.m.	17	3:03 a.m.	17	1:33 a.m.	17	9:33 a.m.	☾ ✱ ♀	G
	7:00 a.m.		5:30 a.m.		4:00 a.m.		12:00 a.m.	Moon 10/49 Cancer	
	9:58 a.m.		8:28 a.m.		6:58 a.m.		2:58 p.m.	☾ □ ♀	B
	1:39 p.m.		12:09 p.m.		10:39 a.m.		6:39 p.m.	☾ □ ♀	B
	11:15 p.m.		9:45 p.m.		8:15 p.m.	18	4:15 a.m.	☾ ✱ ♂	G
18	4:18 p.m.	18	2:48 p.m.	18	1:18 p.m.		9:18 p.m.	☾ ✱ ☉	G
	4:39 p.m.		3:09 p.m.		1:39 p.m.		9:39 p.m.	☾ P ♀	
	8:06 p.m.		6:36 p.m.		5:06 p.m.	19	1:06 a.m.	☾ □ ☿	B

Date	Eastern States	Date	Central States	Date	Pacific Coast	Date	Europe	Harmonious	Critical
	9:54 p.m.		8:24 p.m.		6:54 p.m.		2:54 a.m.	Moon enters Leo	
	11:39 p.m.		10:09 p.m.		8:39 p.m.		4:39 a.m.	♀ ♂ ♄	B
19	7:00 a.m.	19	5:30 a.m.	19	4:00 a.m.		12:00 p.m.	Moon 4/27 Leo	
	7:54 a.m.		6:24 a.m.		3:54 a.m.		12:54 p.m.	☉ □ ♃	B
	8:18 a.m.		6:48 a.m.		5:18 a.m.		1:18 p.m.	☿ P ☉	
	9:27 a.m.		7:57 a.m.		6:27 a.m.		2:27 p.m.	☿ *	G
	6:13 p.m.		4:43 p.m.		3:13 p.m.		11:13 p.m.	♀ P ♄	
	8:00 p.m.		6:30 p.m.		5:00 p.m.	20	1:00 a.m.	☿ P ♂	
20	2:16 a.m.	20	12:46 a.m.		11:16 p.m.		7:16 a.m.	☿ *	G
	5:10 a.m.		3:40 a.m.	20	2:10 a.m.		10:10 a.m.	☿ △ ♀	G
	7:00 a.m.		5:30 a.m.		4:00 a.m.		12:00 p.m.	Moon 16/16 Leo	
	4:10 p.m.		2:40 p.m.		1:10 p.m.		9:10 p.m.	☿ □ ♂	B
	7:03 p.m.		5:33 p.m.		4:03 p.m.	21	12:03 a.m.	☿ P ♃	
21	6:17 a.m.	21	4:47 a.m.	21	3:17 a.m.		11:17 a.m.	♀ □ ♄	B
	6:25 a.m.		4:55 a.m.		3:25 a.m.		11:25 a.m.	☿ ♂ ♃	B
	7:46 a.m.		6:16 a.m.		4:46 a.m.		12:46 p.m.	☿ P ♄	
	9:04 a.m.		7:34 a.m.		6:04 a.m.		2:04 p.m.	☿ △ ♄	G
	10:20 a.m.		8:50 a.m.		7:20 a.m.		3:20 p.m.	☿ □ ☉	B
	10:35 a.m.		9:05 a.m.		7:35 a.m.		3:35 p.m.	Moon enters Virgo	
	4:31 p.m.		3:01 p.m.		1:31 p.m.		9:31 p.m.	☿ P ♄	
22	5:34 a.m.	22	4:04 a.m.	22	2:34 a.m.	22	9:34 a.m.	☿ ♂ ♄	B
	7:00 a.m.		5:30 a.m.		4:00 a.m.		12:00 p.m.	Moon 10/19 Virgo	
	8:40 a.m.		7:10 a.m.		5:40 a.m.		1:40 p.m.	☿ P ♀	
	10:18 a.m.		8:48 a.m.		7:18 a.m.		3:18 p.m.	☿ □ ♃	B
	1:21 p.m.		11:51 p.m.		10:21 p.m.		6:21 p.m.	☿ P ♄	
23	6:55 a.m.	23	5:25 a.m.	23	3:55 a.m.	23	11:55 a.m.	☿ △ ♂	G
	6:56 a.m.		5:26 a.m.		3:56 a.m.		11:56 a.m.	♀ △ ♄	G
	7:14 a.m.		5:44 a.m.		4:14 a.m.		12:14 p.m.	☿ P ♀	
	8:43 p.m.		7:13 p.m.		5:43 p.m.	24	1:43 a.m.	Moon enters Libra	
	11:28 p.m.		9:58 p.m.		8:28 p.m.		4:28 a.m.	☿ P ♄	
24	1:09 a.m.		11:39 p.m.		10:09 p.m.		6:09 a.m.	☿ △ ☉	G
	7:00 a.m.	24	5:30 a.m.	24	4:00 a.m.		12:00 p.m.	Moon 5/31 Libra	
	7:11 p.m.		5:41 p.m.		4:11 p.m.	25	12:11 a.m.	☿ P ♄	
	9:54 p.m.		8:24 p.m.		6:54 a.m.		2:54 p.m.	☿ ♂ ♄	
25	3:28 a.m.	25	1:58 a.m.	25	12:28 a.m.		8:28 a.m.	☿ P ♄	
	4:54 a.m.		3:14 a.m.		1:54 a.m.		9:54 a.m.	☿ △ ♂	G
	7:00 a.m.		5:30 a.m.		4:00 a.m.		12:00 p.m.	Moon 18/43 Libra	
	11:30 a.m.		10:00 a.m.		8:30 a.m.		4:30 p.m.	☿ ♂ ♀	B
	2:26 p.m.		12:56 p.m.		11:26 a.m.		7:26 p.m.	☿ P ♃	
	11:24 p.m.		9:54 p.m.		8:24 p.m.	26	4:24 a.m.	☿ △ ♃	G
26	1:56 a.m.	26	12:06 a.m.		10:56 p.m.		6:56 a.m.	☿ ♂ ♄	G
	2:52 a.m.		1:02 a.m.		11:52 p.m.		7:52 a.m.	Moon enters Scorpio	
	5:14 p.m.		3:44 p.m.	26	2:14 p.m.		10:14 p.m.	☿ P ♂	
	7:24 p.m.		5:54 p.m.		4:24 p.m.	27	12:24 a.m.	☿ *	G
27	4:50 a.m.	27	3:20 a.m.	27	1:50 a.m.		9:50 a.m.	☿ P ☉	
	7:00 a.m.		5:30 a.m.		4:00 a.m.		12:00 p.m.	Moon 16/28 Scorpio	
	10:58 p.m.		9:28 p.m.		7:58 p.m.	28	3:58 a.m.	☿ ♂ ♂	B
28	2:18 a.m.	28	12:48 a.m.		11:18 p.m.		7:18 p.m.	☿ □ ♃	B
	5:28 a.m.		3:58 a.m.	28	2:28 a.m.		10:28 a.m.	Moon enters Sagittarius	
	10:09 a.m.		8:39 a.m.		7:09 a.m.		3:09 p.m.	☿ P ♃	
	4:42 p.m.		3:12 p.m.		1:42 p.m.		9:42 p.m.	☿ ♂ ☉	B

	9:15 p.m.	7:45 p.m.	6:15 p.m.	29	2:15 a.m.	☿	□	♄		B
29	3:31 a.m.	29 2:01 a.m.	29 12:31 a.m.		8:31 a.m.	☿	✳	♄		G
	7:00 a.m.	5:30 a.m.	4:00 a.m.		12:00 p.m.	Moon 15/38 Sagittarius				
	10:20 p.m.	8:50 p.m.	7:20 p.m.	30	3:20 a.m.		♄	✳	♀	G
30	0:21 a.m.	10:51 p.m.	9:21 p.m.		5:21 a.m.	☿	△	♀		G
	0:28 a.m.	10:58 p.m.	9:28 p.m.		5:28 a.m.	☿	♂	♄		B
	3:09 a.m.	30 1:39 a.m.	30 12:09 a.m.		8:09 a.m.	☿	✳	♄		G
	5:41 a.m.	4:11 a.m.	2:41 a.m.		8:41 a.m.	☿	△	♄		G
	6:12 a.m.	4:42 a.m.	3:12 a.m.		9:12 a.m.	Moon enters Capricorn				
	7:57 p.m.	6:27 p.m.	4:57 p.m.	31	12:57 a.m.		♂	□	♄	B
	9:46 p.m.	8:16 p.m.	6:46 p.m.		2:46 a.m.	☿	△	♄		G
31	0:06 a.m.	10:36 p.m.	9:06 p.m.		5:06 a.m.	☿	P	♄		
	0:09 a.m.	10:39 p.m.	9:09 p.m.		5:09 a.m.		♄	P	♄	
	3:55 a.m.	31 2:25 a.m.	31 12:55 a.m.		8:55 a.m.	☿	□	♄		B
	7:00 a.m.	5:30 a.m.	4:00 a.m.		12:00 p.m.	Moon 15/20 Capricorn				
	1:08 p.m.	11:38 a.m.	10:08 a.m.		6:08 p.m.		♀	P	♄	
	1:32 p.m.	12:02 p.m.	10:32 a.m.		6:32 p.m.		♀	✳	♄	G
	2:13 p.m.	12:43 p.m.	11:13 a.m.		7:13 p.m.		☉	□	♄	B
	11:42 p.m.	10:12 p.m.	8:42 p.m.	Jn.1	4:42 a.m.		♄	✳	♄	G

Explanation of Symbols Used in Aspectarian Planetary Symbols

♀—Venus—Social Life, Pleasure, Favors.
 ☿—Mercury—Intellectual Work, Travels, Changes, Writings, etc.

☉—Sun—Power, Ambition, Honor Those in Authority.

♄—Saturn—Organization, Business Settlements, Buying.

♄—Jupiter—Legal Affairs, Publicity, Business Expansion, Selling.

♂—Mars—Hazardous Ventures, Contests, Surgery, Work, etc.

♄—Uranus—Friendships, Radical Changes, New Enterprises.

♄—Neptune—Inspiration, Speculation, Psychism, Navigation, etc.

ASPECTS

P—Parallel—Intensifies (concentrates) influence of planets involved and of other aspects in force about the same time.

♂—Conjunction—Makes planets involved

very powerful (for good or ill) according to other aspects in force about the same time.

✳—Sextile—An aspect of attraction and opportunity, planets work together harmoniously.

□—Square—An aspect of Action—often violence—planets involved act alternately at cross purposes—a very stimulating aspect, but dangerous.

△—Trine—An aspect of Inspiration and good luck the most powerfully harmonious of all the aspects.

♂—Opposition—An aspect of conflict, separation and depression, planets involved tend to contradict and neutralize each other.

Stat. D.—Stationary—Direct—A retrograde planet, stops and commences to move forward.

Stat. R.—Stationary—Retrograde—Planet stops and commences to move backward (apparent motion).

National Affairs

For May, 1934.

United States

The cyclic chart for Eastern United States for this month, brings Saturn to the ascendant under heavy afflictions from the third house, where we find a powerful concentration of forces, which might well be expected to produce serious trouble in connection with Railways, the Postal Department, Education and the Press. This department rules any business or activity that has to do with transportation or communication and the very least that can be said is that the influences at work here certainly are indicative of trouble and danger in connection with these matters.

Saturn on the ascendant is likely to have quite a depressing effect upon public consciousness, the people of the country might be expected to become quite discontented, more than ordinarily inclined to lawlessness and generally, impatient and rebellious under any form of restraint, and subject to unusual disasters of various kinds which may result in a heavy loss of life. In such case these disasters would probably be connected with the transportation facilities of the nation and thus might manifest as a very serious railway accident, otherwise an unusual number of relatively serious mishaps to those who travel by rail or road. The most dangerous period would seem to be between May the 12th and the 21st. Generally speaking, therefore, this might be accepted as an unfavorable time for traveling and certainly warns against the acceptance of any undue risks in this connection. All those responsible for public safety might profitably accept this warning as indicating a time when it is more than ordinarily necessary to give the fullest consideration to all details and duties that make for safety.

Further to consider the significance of this department for the intellectual activities of the people, this might well bring some sensational disclosures through the press, which not only threatens the positions of those in authority, but also may have some very unpleasant reactions in the form of libel suits, etc. Generally speaking, therefore, this is also a time when everyone should guard his speech and writings carefully and be sure that he knows what he is talking about before he speaks or writes.

Finally, it may be said that this Luration of May 13th, threatens the stability of the government, at least, insofar as the administrative branches thereof are concerned and it is probable that a very determined attempt will be made by those in opposition to the government to discredit those in power. However, in consideration of the fact that this Luration while it squares Saturn also sextiles Pluto, the ruler of the tenth house of this cyclic chart, we may expect to find the said opposition in a rather bad spot and it appears that regardless of temporary reactions the people of the country are not really much in sympathy with this movement.

In the financial department, there are indications of some rather extraordinary developments. Certain legislation bearing directly upon the economic policies are probable. This month might well mark the commencement of a wave of speculation that could be expected to continue over a period of several weeks. Stocks, banks, investments and the general business of the nation should be greatly stimulated, however, before this can happen it would seem that a short period of depression may develop around the middle of the month and those, who may then be in, may have to take and accept some heavy losses, yet this temporary depression should be followed quite shortly thereafter by a surprising and rapid recovery—not later than the first week of June and probably during the last week of May.

1935 EPHEMERIS

Now ready

"The Simplified Scientific Ephemeris"

An eye saver

A time saver

A money saver

25 CENTS POSTPAID

MAX HEINDEL

ROSE CROSS PHILOSOPHIES

Oceanside

California

Ask for our Astrological Catalogue

ARIES

The Month of May for those
Born March 21st to April 19th

FIRST WEEK

April 29th to May 6th.

Generally speaking, this should be quite a harmonious and progressive period with special emphasis upon the departments governing health, employment, finances and friends.

A trine from the Sun to Neptune, April 29th, marks an excellent period for the settlement of business and financial matters and for seeking employment. This should also be very helpful in matters of health.

Mercury sextile Saturn, May the 1st, and conjunct Uranus the same day may be accepted as indicative of an opportunity to make a radical but fortunate change in your personal circumstances, plans or enterprises through the influence of an old friend or an elder. Saturn in your House of Friends, during the entire year 1934, naturally tends to operate as a stabilizing influence upon your affairs and will operate principally through friends and elders.

Mercury in transit through your birthsign, will naturally incline to an unusual degree of mental activity, much traveling and many changes. The best time for these matters appears to be from April 26th to May 12th.

SECOND WEEK

May 6th to May 13th.

Mercury practically dominates this entire week and in your case operates through the department of finances. This, will, no doubt, result in many important business discussions and probably a business agreement of some kind. However, while Mercury is in this department it would be well for you to exercise considerable caution lest you talk yourself out of some cash, you might eventually have much money on paper but none in your pocket, for Mercury is distinctly an abstract planet and if allowed too free expression, will put your financial affairs "up in the air". This also leaves you open to loss by theft, sharp practice and bad debts, particularly around the 15th of May, when Mercury squares Saturn.

THIRD WEEK

May 13th to May 21st.

This week presents a planetary pattern that is in sharp contrast to the harmonious configurations of the recent past. Mercury square Saturn May 15th says "no," or if

he doesn't he wishes he had. Generally speaking when Mercury is square Saturn it seems to be practically impossible to get people to agree on anything whatever, or elicit a positive or affirmative answer to any question or proposition.

This will probably constitute a depressing influence from the House of Friends upon your financial affairs. In the ordinary course of events it would be quite inadvisable to have any business relations with friends at this time, nor would it be advisable to attempt any business or financial settlement, or sign any papers during this week. Do not lend or borrow and if you mix friendship and business, you will probably lose both.

Jupiter in your House of Partnerships and social relations, may manifest as a generous, amiable but very expensive person, with whom you may be brought into personal contact and with whom you might be inclined to enter into some form of co-operative arrangement. This association could result in great profit and happiness, but with Venus opposing Jupiter and Venus in your birthsign, there may be considerably more happiness and profit. There is really nothing essentially destructive in this relationship, provided you give full consideration to the practical aspects of the situation. If you do not you may be forced to realize that promises are much easier made than fulfilled. This is a situation that really calls for a well developed sense of justice and a good understanding of the spirit and principle of cooperation. The greatest dangers of this configuration are those incident to self-indulgence and extravagance.

FOURTH WEEK

May 21st to May 28th.

Mercury continues to dominate the situation during this period, but from a different department of your life, it is now in that department, which governs journeys, changes, environmental readjustments, intellectual expression and intimate associations. Up to the time that Mercury squares Neptune, May the 21st, much discretion in the above matters is called for, and such decisions should be postponed.

Following May 21st, a trine from Mercury to Jupiter greatly favors journeys, writings, intellectual expression, legal affairs, partnerships, marriage, and social readjustment of all kinds. The balance of this week is very progressive.

ARIES—Daily Guide

May 1—Ruler Jupiter—Opportunities through friends. Excellent for social affairs. Adverse for professional matters. Guard your credit.

May 2—Ruler Jupiter—A legal paper or a business journey is favored, also investments and professional affairs. Social contacts call for much discretion.

May 3—Ruler Saturn—This will hold you down to earth. Good for business, for buying. Caution in professional matters necessary.

May 4—Ruler Saturn—Pursue a conservative policy in all business matters. Guard against radical tendencies in domestic affairs. Favorable for traveling and correspondence.

May 5—Ruler Uranus—An unexpected message, but caution in these matters is advised. Beware of impulsive changes.

May 6—Ruler Uranus—Put your pride in your pocket and then forget which pocket. Rather dangerous for traveling.

May 7—Ruler Neptune—A romantic influence. An interesting person. Favorable for journeys and writings.

May 8—Ruler Neptune—You may travel far in the search of an ideal otherwise you may find it through a letter. Favorable for journeys and writings.

May 9—Ruler Mars—An excellent financial day, very favorable for forcing business settlements, buying and speculation.

May 10—Ruler Mars—Another good business day force your financial affairs.

May 11—Ruler Mars—Excellent for the commencement of new ventures, be original, enterprising and social. An old friend may render much assistance.

May 12—Ruler Venus—Patience and persistent effort will be rewarded with success. Favorable for action and hazardous ventures.

May 13—Ruler Venus—"Safety First" should be the rule. Tone down your pride and ambition, avoid clashes with those in authority, seek social life.

May 14—Ruler Mercury—Excellent for social affairs and for meeting new friends. Consider the practical aspects of the situation.

May 15—Ruler Mercury—Journeys, writings, etc., should be fortunate. Favorable for a pleasure trip, also for investments, legal papers, etc.

May 16—Ruler Moon—An unexpected meeting or message may result in new opportunities for sale and permanent progress.

May 17—Ruler Moon—A social contact of importance. You may seek favors of those in authority. Quite favorable for journeys and writings.

May 18—Ruler Moon—Don't force professional matters or questions of credit. Opportunities may come through powerful friends; don't permit your pride to interfere.

May 19—Ruler Sun—Opposition may be met with; do not force matters, avoid legal affairs. Excellent for social contacts, good news from a friend.

May 20—Ruler Sun—Avoid conflicts and hazardous ventures. Quite favorable for social affairs, but forget business and professional matters.

May 21—Ruler Mercury—An unexpected message, forget it. Avoid discussions of professional matters or credit.

May 22—Ruler Mercury—Be sure you interpret correctly what you hear, and say exactly what you mean. A dispute with someone in authority through mutual misunderstanding.

May 23—Ruler Mercury—Good news, concerning a financial matter. A business paper may be profitable. A progressive day.

May 24—Ruler Venus—Use persuasion, good news should be received. Personal ventures favored; push your affairs.

May 25—Ruler Venus—Excellent for social activities, partnerships, and legal affairs. An unexpected meeting. Favorable for dealing with strangers, traveling and investments.

May 26—Ruler Pluto—Personal contacts may contribute much to your progress and success. Favorable for dealings with strangers; an ideal or secret friendship may be formed.

May 27—Ruler Pluto—Avoid personal conflicts quite adverse for legal affairs. Guard against accidents through impulse and reckless haste.

May 28—Ruler Jupiter—Some powerful assistance may be received if you can compromise. You have some very influential and generous friends. Rather dangerous for traveling.

May 29—Ruler Jupiter—A very good social day, excellent for meeting new friends, for business relations on a friendly basis. Seek favors. Also quite favorable for legal affairs and investments.

May 30—Ruler Saturn—A rather dangerous day, guard against excessive enthusiasm, beware of accidents while traveling. Unfavorable for writings, health and employment. Avoid disputes over these matters.

May 31—Ruler Saturn—Beware of a financial loss through unwise expansion of credit or through attempting too much, too quickly in the professional department. Very good for health, employment and domestic affairs.

TAURUS

The Month of May for those

Born April 20th to May 21st

FIRST WEEK

April 29th to May 6th.

Departments governing investments, heart interests, legal affairs, profession and credit are much favored during this week, you should, therefore force such matters. Neptune in your solar fifth house, harmoniously aspected by the Sun and Mars, may grant you quite ideal happiness as a result of the success of some personal venture, this could represent the realization of an ambition and a new enterprise commenced at this time should be unusually successful.

The conjunction of Mercury and Uranus, May 1st, harmoniously configured with Saturn in your house of profession and credit may result in a radical change of a personal or private venture, which provides new opportunities and greater security professionally. You should in a word make the most of your opportunities at this time, push your affairs with energy and confidence and endeavor to make as much progress as possible, when seas are calm and the wind is in your favor.

SECOND WEEK

May 6th to May 13th.

Another favorable period along somewhat the same lines as indicated above.

Mercury in transit through your birth-sign, will, no doubt, grant you a renewed interest in life and should provide a great variety of interesting experiences, there will, no doubt, be a pronounced inclination to all things new, novel and sensational; a great desire for change, excitement new scenes, etc.

The conjunction of Mercury and Mars, May 8th, followed by a solar conjunction of Mercury, May the 12th, would seem to mark the time of the Maximum power of this Mercurial influence and the most favorable period for these matters.

THIRD WEEK

May 13th to May 21st.

Here is where you may run into trouble, if you have been traveling, or considering other changes and have not completed the matter prior to this time, this marks the end of the road anyway. Perhaps you may

catch up with a detour sign or find a bridge down, it would be advisable to make certain in advance that you have planned your moves with full consideration of all possible eventualities and remember when Mercury squares Saturn you will be safe only if you can stand anything that can possibly happen. See that your brakes are in good working order, you might have reason to stop quite suddenly around the 15th and study your road map carefully, before the necessity for doing so may arrive.

Briefly a dangerous period for traveling, writings and professional affairs and remember when you play the game of life with Fate you are up against a master player, so don't overbid your hand, it looks as though there might be five aces in this deck.

FOURTH WEEK

May 21st to May 28th.

Here is where you find a mystery right on your doorstep, this is a very peculiar condition, if it does not indicate an illness in your home, it may bring a strange visitor. But with Mercury square Neptune you must be careful to direct your thought into optimistic and constructive channels and beware of talking too much, however, I suppose we might as well tell the wind to stop blowing, for under this aspect people just love to talk and worry; whether they have anything to say (or worry about) or not, does not seem to be particularly important. However you may be assured that whatever you say and think will be important to the other fellow. This would furthermore be quite an unfavorable time to make a change of location—residence or field of activity.

Following May 22nd, Mercury moves into a trine with Jupiter and you may expect the clouds to roll away. In fact, we might say that this approaching trine to Jupiter really mitigates much of the evil incident to the preceding square to Neptune and from this point of view, we are in a position to give the assurance that whatever may be troubling you prior to this time you really have little enough to worry about since Jupiter thus provides powerful protection. The worse never happens when Jupiter is friendly. The balance of this week is quite favorable for intellectual affairs, traveling and investments.

TAURUS—Daily Guide

May 1—Ruler Saturn—Favorable for business and profession. Avoid publicity. Discount messages received.

May 2—Ruler Saturn—Buy, make business settlements. Adverse for traveling and writings. Guard your expenditures closely.

May 3—Ruler Uranus—Discount promises made to you today. Caution in business is necessary. Guard your expenditures.

May 4—Ruler Uranus—Guard your speech and writings carefully. Beware of accidents while traveling. Favorable for finances.

May 5—Ruler Neptune—Guard your speech and writings carefully and do not travel on strange roads—or alone. An accident on a journey may be quite serious.

May 6—Ruler Neptune—A good day for rest and seclusion, you probably need it—strange as it may seem. Guard your health, pay close attention to diet.

May 7—Ruler Mars—This is a day to force settlements in financial affairs. Favorable for buying and speculation. Guard your health closely.

May 8—Ruler Mars—An excellent financial day, use your aggressive urges, force business settlements, buy, speculate.

May 9—Ruler Venus—Follow independent lines of endeavor. You may try something new, but work alone and in seclusion.

May 10—Ruler Venus—A very good social day, excellent for contacting new friends. A friendly offer would seem to be much worth while.

May 11—Ruler Venus—Private or secret information relative to a business matter. Excellent for business settlements, legal affairs and employment.

May 12—Ruler Mercury—Some private happiness in the home is indicated—mysterious visitors, but they may bring good fortune.

May 13—Ruler Mercury—A disappointing message. If you don't ask any questions you won't hear any bad news.

May 14—Ruler Moon—Excellent for seeking favors from those in authority. Guard your speech and writing carefully, plan your journeys with care.

May 15—Ruler Moon—Favorable for employment. An inspirational influence to the home. Good fortune through a letter or a journey.

May 16—Ruler Sun—An extraordinary development in your professional affairs should result in greater business security. Advancement of fortune may be experienced.

May 17—Ruler Sun—Financial affairs are favored. Unfavorable for traveling, guard your speech and writings carefully.

May 18—Ruler Sun—An unexpected message may cause you to feel very resentful. You need not be unduly depressed. Avoid strangers and publicity.

May 19—Ruler Mercury—A message from someone in authority may be very pleasing. Keep your own counsel. Avoid publicity and beware of accidents while traveling.

May 20—Ruler Mercury—Dangerous for traveling, especially adverse for the commencement of a long journey. Avoid conflicts.

May 21—Ruler Venus—An unexpected business offer merits favorable consideration. Dangerous for traveling and legal affairs, guard against accidents.

May 22—Ruler Venus—Good for social affairs, but with regard to practical matters very confusing. Don't believe all you hear.

May 23—Ruler Venus—You are usually very charming, happy and harmonious when you are not hungry. Excellent for employment and health.

May 24—Ruler Pluto—Excellent for the settlement of business matters. A good business offer may be received.

May 25—Ruler Pluto—Adverse for traveling and for legal affairs. Beware of sudden and whimsical changes. Good for business offers, selling and collecting.

May 26—Ruler Jupiter—Favorable for health and employment. A good professional opportunity may be presented, also favorable for social life and for meeting new friends.

May 27—Ruler Jupiter—Adverse for health matters and employment. Quite favorable for social affairs, but guard against disputes.

May 28—Ruler Saturn—Postpone business decisions. Don't buy or sell. Much caution with regard to health and employment matters is called for.

May 29—Ruler Saturn—Favorable for buying and conservative investments, and for the solution of problems relating to health and employment.

May 30—Ruler Uranus—Quite favorable for traveling, but much caution in business matters is called for. Beware of a bad investment and of danger in the pursuit of pleasure.

May 31—Ruler Uranus—Very good for traveling, writings and investments, but avoid secret matters and beware of financial promises that are not secured by tangible assets.

GEMINI

The Month of May for those
Born May 22nd to June 21st

FIRST WEEK

April 29th to May 6th.

Something very important is happening in your House of Friends, this looks like a new friendship, or it may be the return of an old friend long absent, a very surprising message may be received, probably from a considerable distance—far removed in mind at least. It could result in an unusual meeting in a public place—a complete stranger—yet from the first moment you feel a certain kinship for this person, a sense of intimacy which could only ordinarily come after years of intimate association. There may be an element of Romance in this, since Uranus is essentially a Romantic planet, but this is less likely in consideration of the fact that Mercury furnishes the stimulation and Mercury is distinctly a symbol of intellectual contacts and mental interests. This person or such people as you might attract at this time will, no doubt, be in some way extraordinary, quite original and possibly somewhat eccentric—a strange character—and the relationship most unusual, but, constructive, since Saturn is well configured with these planets.

There seems to be also considerable success and marked improvement in your circumstances as the result of the idealistic and inspirational influence of Neptune in your domestic department and under the stimulation of a trine from the Sun and Mars.

SECOND WEEK

May 6th to May 13th.

The fortunate conditions incident to the preceding week may be expected to continue throughout this period, particularly favorable for matters that have to do with your home, or position in life. Neptune under a favorable aspect from a powerful Mercury should provide fortunate changes and quite ideal living and working conditions.

Mars in your solar twelfth house favors activity of a personal or a private nature and work that is best done in seclusion or behind the scene. If you are to work efficiently and achieve best results, you must keep your activities well concealed. This configuration is indicative of a secret, mysterious or invisible force working through you to bring important matters to a satisfactory conclusion.

sterious or invisible force working through you to bring important matters to a satisfactory conclusion.

THIRD WEEK

May 13th to May 21st.

Here is a situation that does not look so promising, Saturn insinuates his sad, sour personality into the picture and since he happens to be in a rather ugly mood, threatens to suddenly put an end to the harmonious activity that has characterized the past two weeks. Delays, obstructions and disappointments are met with, therefore, it is important that whatever matters are in process of development up to this time they should be concluded and the matters settled not later than May 12th. What is required more than anything else at this time is faith—a firm belief in the infinite justice of nature. Practically all the evils due to the afflictions of Saturn are the result of impatience.

Saturn in your ninth house will probably stop or delay incoming messages and generally speaking may be depended upon to give a negative reply to any and all questions or propositions. Furthermore this would be an unfavorable time for publicity, so don't give out any information lest it be used against you. Guard your health closely and beware of accidents while traveling.

FOURTH WEEK

May 21st to May 28th.

You should at this time avoid an unwise change of location, position, personal circumstances or plans; do not travel and guard your speech and writings carefully. Much self-discipline and many varied interests in life will be required to counteract a restless nervous discontent, otherwise there may be a tendency in response to the whim of the moment and do many strange and peculiar things for no good reason in particular. However, the trine of Mercury to Jupiter, May 23rd, promises success in regard to investments, affairs of the heart and entertainment. Considerable happiness and progress could result from a change or a journey, otherwise a letter or a legal paper on or shortly following the 23rd of May.

GEMINI—Daily Guide

May 1—Ruler Uranus—Favorable for traveling, writing and correspondence, social affairs, publicity. Be cautious with regard to business offers.

May 2—Ruler Uranus—Excellent for traveling and writings. Guard your expenditures closely.

May 3—Ruler Neptune—A romantic, but confusing and deceptive influence in the department of partnerships, legal affairs. Adverse for journeys and social affairs.

May 4—Ruler Neptune—Health and employment matters benefited. Personal advancement through a social contact; avoid speculation.

May 5—Ruler Mars—Save your money, unless you want to give it away. In that case there will be a friend on hand to accept it gladly.

May 6—Ruler Mars—Control tendencies to anger, impulse, recklessness and excessive pride. Rather adverse for social affairs.

May 7—Ruler Venus—Use persuasion but be aggressively persuasive. Use your head and if you have anything to say, by all means talk.

May 8—Ruler Venus—An opportunity to secure your position or for the realization of an ambition through friends. An excellent day for social affairs.

May 9—Ruler Mercury—May be quite an unsettled, restless sort of day, but very interesting. Make plans for the future.

May 10—Ruler Mercury—Quite fortunate for journeys and correspondence, also favorable for investments and speculation. Follow your own judgment in these matters, keep your own counsel.

May 11—Ruler Mercury—Friends seem to have a direct connection with your business affairs. Favorable for business dealings with strangers and for the formation of new business associations.

May 12—Ruler Moon—Secret correspondence or a rather mysterious journey should bring the fulfillment of your hopes. Excellent for personal affairs.

May 13—Ruler Moon—Unfortunate for business relations with friends. Unfavorable for seeking favors; consider any business propositions carefully. Don't sell.

May 14—Ruler Sun—Beware of impractical financial schemes, avoid mixing friendship with business. Good news may be received, but save your money.

May 15—Ruler Sun—A letter to a friend should have most fortunate results. Very favorable for traveling and writing, also for personal affairs.

May 16—Ruler Mercury—Excellent for legal affairs, publicity and for traveling—especially the commencement of a long journey and for dealing with those in authority.

May 17—Ruler Mercury—Postpone business

decisions, do not buy or sell. Guard your expenditures closely. Favorable for traveling and writing.

May 18—Ruler Mercury—An unexpected business proposition calls for much discretion; don't force business decisions. Unfavorable for selling, favorable for traveling and messages received.

May 19—Ruler Venus—Do not force business matters. Quite favorable for social affairs; you should meet some entertaining people. Seek recreation.

May 20—Ruler Venus—Personal contacts made today may bring much happiness and success. Avoid discussions of business affairs.

May 21—Ruler Mercury—An unusual friendship, which however, calls for a proper consideration of practical values. Beware of business offers.

May 22—Ruler Pluto—A business paper may be presented for your consideration. It would seem inadvisable to decide about the matter today.

May 23—Ruler Pluto—Favorable for legal affairs. A social event may open new avenues for progress. Favorable for messages received, publicity and long journeys.

May 24—Ruler Jupiter—A very helpful personal contact may be made or new friendships formed. Excellent for legal affairs.

May 25—Ruler Jupiter—Favorable for legal affairs and traveling, but, much discretion in social matters and investments is called for.

May 26—Ruler Saturn—Good opportunities in the department of public life, long journeys and legal affairs indicated. Much discretion in the matters of investment and with regard to speculative enterprises is called for.

May 27—Ruler Saturn—Beware of a bad investment. Danger in pursuit of pleasure, much discretion in social affairs is called for; attend to business.

May 28—Ruler Uranus—Caution with regard to investments is advised, also discretion in social affairs. Quite favorable for traveling.

May 29—Ruler Uranus—Excellent for traveling, writing, and for investments. Business offers merit careful consideration. Favorable for selling, collection and settlement for business matters.

May 30—Ruler Neptune—Quite favorable for social affairs, some very peculiar, but helpful personal contacts may be made, some financial gain through friends, but beware of accidents while traveling and guard your speech and writings carefully.

May 31—Ruler Neptune—Favorable for messages to the home and change of position, but beware of an unprofitable influence of friends upon your financial affairs, do not mix friendship with business.

CANCER

The Month of May for those

Born June 22nd to July 22nd

FIRST WEEK

April 29th to May 6th.

A very good social period excellent for contacting new friends and for receiving benefits through friends, also favorable for traveling, writings and intellectual expression. A journey or a letter may exert a very potent influence upon your affairs.

A radical change in your professional life may be expected under the conjunction of Mercury and Uranus, May the 1st. Since this is harmoniously configured with Saturn in that department which governs your business relations, we may expect this change to be a fortunate one. This may bring quite an unexpected message from someone in authority, possibly a business offer which provides an opportunity for greater security in your financial affairs.

SECOND WEEK

May 6th to May 13th.

Mercury conjunction Mars May 8th, is indicative of unusual activity of an intellectual nature in your House of Friends. A new friend contacted at this time will probably be very helpful to you, since Mars is well configured with Neptune. This further indicates that journeys and writings are likely to be productive of excellent results, the fact that Mercury after its conjunction with Mars moves quickly to a conjunction with the Sun May the 12th, marks this period as favorable for the commencement of a new enterprise, particularly such as may combine the intellectual and social urges. WHAT you know is harmoniously related to WHO you know and it may, therefore, be expected that you will contact some very active, powerful and helpful friends, who will render valuable assistance to the realization of your hope, wishes and aspirations in life.

THIRD WEEK

May 13th to May 21st.

The planetary pattern during this period is by no means so harmonious as has been the case during the past couple of weeks, in fact, there will be ample opportunity to break up a very successful system of relationship and thereby destroy all the good that has been done, to say nothing of the heavy loss financially. It would be advisable to avoid business discussions and business settlements during this period and if you should happen to require any assistance

in your business affairs or financial favors it is quite unlikely that you would be able to obtain such at this time. Only delays, disappointments and denials may be met with during this week and if you should be inclined to inquire as to just why this is so you may be advised that it is because what you want is probably not what you need. At any rate you can't get it so, you will be much happier and more successful if you make up your mind to get along without it. You may avoid much hardship during this period by settling all matters prior to this time when conditions were favorable.

Be particularly careful to avoid discussions of business matters with friends, avoid mixing sentiment or social consideration with business. Furthermore, it might be advisable for you to trade with life in its own coin and consistently refuse any and all offers that may be made. Of one thing you may be assured, anything Saturn gives you, when under affliction you will pay for—and how you will pay.

Venus opposition Jupiter, May 18th, is indicative of a professional problem which involves a question of adapting some new professional activities to a field of activity or base of operation already established. Here is a professional contact or influence of a social nature, and much discretion is called for—watch your over-head. A tendency to extravagance in professional and domestic affairs must be guarded against, otherwise your structure of achievement might become top-heavy and topple over. Jupiter in your fourth house indicates that you probably already have quite a good foundation for success, whatever this other influence may be it does not appear that it necessarily calls for any change of location.

FOURTH WEEK

May 21st to May 28th.

Mercury square Neptune is quite adverse for traveling and writing; keep your own counsel and beware of secret messages, journeys and mysteries of all kinds. Following this a trine of Mercury to Jupiter May 23rd, may serve to clear up many things that have hitherto been quite puzzling and possibly a source of much worry. Some good fortune may visit your home and this is quite a favorable time for making any changes of position or residence that may have been under advisement.

CANCER—Daily Guide

May 1—Ruler Neptune—Personal contacts in public places are inimical to your success. Adverse for legal affairs. Avoid conflicts.

May 2—Ruler Neptune—Quite good for health and work excellent for finances and professional matters. Adverse for social affairs.

May 3—Ruler Mars—Guard against extremes regarding a business or professional matter. Attend to routine. Adverse for legal affairs.

May 4—Ruler Mars—Beware of personal injury through recklessness or undue haste. Avoid disputes and hazardous ventures.

May 5—Ruler Venus—Be careful with regard to professional ventures and questions of credit. Beware of disputes.

May 6—Ruler Venus—Avoid seclusion, seek recreation and social life. Forget professional matters.

May 7—Ruler Mercury—Favorable for private conferences relative to professional matters, but you might as well know the ice is rather thin.

May 8—Ruler Mercury—A very good day. Success in a private matter is indicated. Excellent for social contacts of an intellectual nature.

May 9—Ruler Moon—A keen sense of responsibility will contribute to your success. A very good day for professional expansion or for obtaining favors from those in power.

May 10—Ruler Moon—This may be a day of achievement, but you must build the house on a solid foundation.

May 11—Ruler Moon—You may build a bridge on the road to success. A safe passage on a rather dangerous highway, a day of achievement.

May 12—Ruler Sun—Financial gain, peculiar business conditions are contacted. Those in authority favor your interests.

May 13—Ruler Sun—Beware of a professional reversal through lack of cooperation. A personal contact may threaten your credit. Avoid legal matters.

May 14—Ruler Mercury—A confusing day, a tendency to become lost in a maze of conflicting interests; postpone decisions.

May 15—Ruler Mercury—Excellent for journeys, writings, public activities, legal affairs. Financial gain may result from a professional chance or a new venture.

May 16—Ruler Venus—An unexpected business offer should be received. Excellent for health and employment.

May 17—Ruler Venus—A tendency to extravagance might lead to loss of posi-

tion and credit. Favorable for business offers, but do not mix business with pleasure.

May 18—Ruler Venus—You may use persuasion, apply the social urges to your problems; avoid conflicts. Don't buy—sell.

May 19—Ruler Pluto—If you give you must also be willing to take. It will be to your advantage to give gracefully. A business paper may merit your favorable consideration.

May 20—Ruler Pluto—Favorable for work, attend to routine. Adverse for legal affairs, avoid conflicts.

May 21—Ruler Jupiter—Unfavorable for social contacts of a professional nature. Good for work, attend to routine.

May 22—Ruler Jupiter—If you don't talk you will hear more, but don't believe all of it. Quite adverse for legal affairs.

May 23—Ruler Jupiter—An excellent professional day. Good for seeking a position or promotion, also for health matters.

May 24—Ruler Saturn—You may seek and find security, particularly with regard to health, employment and professional matters. Favorable for buying and investments.

May 25—Ruler Saturn—A conservative policy should result in much success, favorable for business settlements, health, employment and professional matters.

May 26—Ruler Uranus—A good business opportunity may be presented. An unexpected visitor to the home may bring a pleasant surprise but, changes made today are not likely to be permanent.

May 27—Ruler Uranus—Quite favorable for traveling and writing. Beware of violent tendencies. Caution is called for; avoid professional disputes.

May 28—Ruler Neptune—Distinctly adverse for legal matters. Avoid professional conflicts. May be an interesting social day, but don't take life too seriously.

May 29—Ruler Neptune—Favorable for health and work. Unexpected financial good fortune. Favorable for changes of location, residence, etc., also for legal affairs.

May 30—Ruler Mars—A dangerous day; control a tendency to rash speech and impulsive decisions. Quite favorable for employment, attend to routine.

May 31—Ruler Mars—Favorable for personal matters, journeys, writings and personal finances, but beware of unwise changes in the department of employment through excessive optimism relative to professional matters.

LEO

The Month of May for those
Born July 23rd to August 23rd

FIRST WEEK

April 29th to May 6th.

This appears to be a very fine business and financial period with much additional assistance in that department governing profession, credit and social advancement. A promotion or other advancement of fortune with an increase of power, authority, honor, dignity and expansion of credit or of your sphere of professional influence should be possible and very profitable; this may further involve a change of location, residence or field of activity. This would be quite a favorable time for such a change or for the commencement of a new enterprise.

Saturn is a stabilizing influence in the department governing legal affairs and social relations, hence favors the equitable of such matters. An unexpected message or personal contact of an unusual nature or involving a stranger may provide an excellent opportunity for the organization of a new form of relationship which tends to greater security of fortune personal, professional and financial. An excellent time for enterprises and activities having to do with publishing, advertising, public life, philosophy, science, long journeys and distant localities.

SECOND WEEK

May 6th to May 13th.

Mercury now takes command of the situation. This is a symbol of intellectual control. Those in authority may be expected to deliver some very important messages at this time and from someone in a position of power you may receive a message which will have the effect of materially advancing your fortunes, this will be a profitable message—there will be money in it.

The conjunction of Mercury and Mars, May 8th followed by a solar conjunction of Mercury May the 12th may result in an unusually significant development in your professional life and marks a very good time for the commencement of a new enterprise, you should make every effort to advance your fortunes during this period.

THIRD WEEK

May 13th to May 21st.

This appears to be a week that calls for much caution in the matter of personal con-

tacts, legal affairs, partnerships and dealings with those in authority. All matters of this nature should be postponed if possible, it may be definitely stated that under such configurations as prevail at this time, there would be very small possibility of your getting a favorable decision either in a court of law or in any matter that concerns your professional advancement or credit.

There may be influences around you or you may be aware of such influences which make you feel quite uncertain even fearful of your personal position, prestige or future success, and as a result of such doubt or fear you might be inclined to resort to the desperate methods in order to improve the situation and only result in making matters worse. The best advice that we could give under such circumstances is that probably most of these doubts are ill-founded and if you will just leave matters alone and allow them to work themselves out all may be well. In other words just sit still and avoid rocking the boat, you may be warned that if you have an upset at this time, the results may be quite disastrous. Never be afraid of facts; most of the difficulties in life arise from an inability on the part of the average person to face a fact squarely and call it by its right name.

FOURTH WEEK

May 21st to May 28th.

Mercury square Neptune, May 21st, may do nothing worse than get you involved in some financial difficulties with friends. Beware of becoming tangled in the business complications of other people, you may be the recipient of much advice from some well meaning friends who have little else to offer and if you follow it you won't have anything either. A very good time to keep in mind a certain definition of advice—"A fool won't take it and a wise man doesn't need it."

Mercury trine Jupiter May 23rd, is indicative of a profitable letter, journey or legal paper and this is one time when some very intelligent and well informed friend may give you something more profitable than advice. The balance of this week is excellent for legal affairs, journeys, correspondence, intellectual activities, speaking writing, etc., and for contracting new friends.

LEO—Daily Guide

May 1—Ruler Mars—Push your business and financial affairs. Offers of cooperation should be accepted. Favorable for legal matters. Adverse for health.

May 2—Ruler Mars—Excellent for the commencement of a new enterprise. A day of progress push your affairs. Attend to business.

May 3—Ruler Venus—Favorable for meeting new friends, journeys and writings. Guard against ill health through excess. Moderation in all things necessary.

May 4—Ruler Venus—Fortunate for social affairs, good news may be received. Beware of accidents through impatience and impulse.

May 5—Ruler Mercury—Bad news may be received but it will not be so bad if you keep it a secret.

May 6—Ruler Mercury—A violent conflict among friends seriously interferes with your progress, but, it takes two to make a quarrel.

May 7—Ruler Moon—A favorable message from a friend. Excellent for dealings with strangers, seek information and you may learn much of value.

May 8—Ruler Moon—You may contact a powerful friend, who may assist you to the realization of your hopes and provide new opportunities for progress.

May 9—Ruler Sun—A day of progress and achievement, favorable for publicity and for traveling. Good news should be received.

May 10—Ruler Sun—Cooperation is called for, but cooperation means equity. When you travel consider the cost.

May 11—Ruler Sun—Very favorable for the settlement of a legal matter.

May 12—Ruler Mercury—An inspirational message may be received and bring much personal happiness. Favorable for legal affairs and public activities.

May 13—Ruler Mercury—It will be necessary for you to control a tendency to discontent and tone down an extremely critical attitude. Beware of accidents while traveling and of falls from high places.

May 14—Ruler Venus—Favorable for legal matters. A profitable personal contact may be made, but avoid mysteries, secrets and seclusion, dangerous for traveling.

May 15—Ruler Venus—The social urges applied to employment problems should have fortunate results. A personal venture is successful.

May 16—Ruler Pluto—Personal contacts with extraordinary people, strangers, etc., may greatly advance your fortunes. Very favorable for investments and speculative enterprises.

May 17—Ruler Pluto—There would ap-

pear to be some danger on a journey. Guard against a tendency toward excess and extravagant tendencies.

May 18—Ruler Pluto—Beware of a serious accident while traveling. Avoid publicity and conflicts. An offer of cooperation should be accepted.

May 19—Ruler Jupiter—Good news, if this should concern a legal matter a decision would probably be in your favor. You have some very good friends, because—or if—you are a good friend.

May 20—Ruler Jupiter—Beware of disputes over matters of employment, also guard against accidents while traveling. Favorable for social affairs.

May 21—Ruler Saturn—Dangerous for traveling and writings. Guard against impatience. Conservative investments favored.

May 22—Ruler Saturn—Beware of changes of employment. Unfavorable for seeking medical advice.

May 23—Ruler Saturn—Success with regard to investments and legal affairs. An important message may be received. Excellent for creative work of any kind. Concentrate on business and finances.

May 24—Ruler Uranus—A day of happiness and success. Excellent for ambitious and speculative enterprises.

May 25—Ruler Uranus—Quite favorable for journeys and writings. Also for investments and mental work, plan your future.

May 26—Ruler Neptune—Opportunity may knock at your door. Quite favorable for the settlement of business and professional matter. You may deal with those in authority.

May 27—Ruler Neptune—Very dangerous for traveling. Avoid hazardous ventures, guard your speech and writings carefully. Attend to routine.

May 28—Ruler Mars—Beware of accidents while traveling, guard the health closely, pay particular attention to diet, avoid conflicts. Unfavorable for social affairs.

May 29—Ruler Mars—Force business settlements. Favorable for buying and investments, an increase of income is probable. Excellent for health, employment, journeys, writings and social affairs.

May 30—Ruler Venus—Quite favorable for social affairs, entertainment enterprises, etc., but much caution in financial matters is necessary, guard your expenditures closely, don't speculate. Avoid disputes with friends over business matters.

May 31—Ruler Venus—Seek seclusion, follow independent ventures, travel, write and plan with regard to financial matters, but beware of a bad investment through acting on misleading information. Follow your own intuition.

VIRGO

The Month of May for those
Born August 24th to September 23rd

FIRST WEEK

April 29th to May 6th.

This is one time at least when Neptune in transit through your birthsign may be expected to produce some constructive results. This, of course, is a major transit in effect over a period of several years and by reference to the general forecast for your sign, which appeared in the August 1933 issue of American Astrology, you may note that there are times when Neptune is far from being constructive in effect and every once in awhile to lead you off on a wild goosechase to nowhere and back. Probably the greatest power that is conferred by Neptune is the capacity for self-sacrifice and the ability it gives to stand alone. The approval of the world does not have or should not have any meaning for a person under the influence of this planet. This is just the person to have around when there is an unpopular piece of work to be done. Neptune, of course, is rather impractical, yet also has a practical value, however little it may be recognized. This planet confers the power of visualization to an unusual degree, besides conferring much happiness through the realization of ideals. Under good aspects as at the present time this may bring you the realization of a dream and much personal happiness as a result of the fulfillment of your fondest hopes. A powerful inspirational influence is here, which may be used to advantage by those engaged in intellectual work and whose activities may have to do with publishing, advertising, science, or religion, and also protection and success to those who may have occasion to travel.

SECOND WEEK

May 6th to May 13th.

This week is very similar to the above at least insofar as the departments of life effected by the configurations are concerned. The influence of Mercury, however, is much more pronounced and will therefore, strengthen all tendencies that are definitely of an intellectual nature. Mercury conjunction Mars, May 8th, and the solar conjunction of Mercury, May 12th, symbolizes a compound influence of great power in the department governing legal affairs, long journeys and messages received. This will tend to force rapid progress and bring important messages, which will have the effect of greatly advancing your fortunes.

Those in public life will, no doubt, be greatly benefited and some very favorable publicity should come out of such a configuration.

THIRD WEEK

May 13th to May 21st.

Here is trouble, and it seems to be definitely focused in the department of health and employment. Quite a dangerous time for traveling and distinctly adverse for legal affairs, publicity and public life, also for matters connected with publishing or advertising. A disappointing message might be received, if you don't ask any questions you won't hear any lies. Your safest course at this time would seem to be to attend strictly to routine duties—even if it hurts.

A business offer may be received, it's a good offer if it doesn't cost you any money, in other words, you can sell, but don't buy and don't sell for promises. Don't borrow and don't lend, don't accept any favors and don't give any. All you have to do in order to make this a successful business period is to save your money.

FOURTH WEEK

May 21st to May 28th.

Here is where you become very much discontented with the way things are going in your professional department and may decide to make a whimsical change in your personal circumstances which could only result in loss of prestige, position and any opportunities for success you might have had. However, there is one advantage in that this restless period is of short duration and if you will just wait a few days—past the 23rd of May, when Mercury trines Jupiter you may manage to settle this matter in a much more satisfactory and infinitely more profitable manner. In fact, with this approaching trine it would seem advisable that you be careful to give full consideration to the practical aspects of any situation in which you may find yourself at this time and pay less attention to your own personal whims, feelings, desires or happiness immediately and consider the financial angle there is money in this for you, but you won't get it by dreaming about it, nor if you spend your time chasing butterflies. Take care of your business and your business will take care of you. Don't forget, you can't spend the money you receive in your dreams.

VIRGO—Daily Guide

May 1—Ruler Venus—Excellent for social life and meeting new friends. Good for employment and business offers. Adverse for speculation.

May 2—Ruler Venus—Distinctly adverse for social life. Beware of the influence of a friend or sentimental considerations upon your business.

May 3—Ruler Mercury—Beware of a bad investment. Discretion with regard to business matters and domestic affairs is called for. Make no changes.

May 4—Ruler Mercury—A fortunate professional change. Good news from one in authority. Adverse for social affairs and for dealings with strangers.

May 5—Ruler Moon—Bad business, unprofitable friendships. Avoid disputes with friends over business matters.

May 6—Ruler Moon—Offers should be refused—if they are any good they will be available tomorrow. Quite favorable for traveling and correspondence, but be not too ambitious or domineering.

May 7—Ruler Sun—Quite good for the commencement of a new professional enterprise. Discretion in financial matters necessary, sell don't buy.

May 8—Ruler Sun—Seek a position or promotion. A good business opportunity may contribute to your success.

May 9—Ruler Mercury—Favorable for legal matters, business offers, selling, collecting and long journeys.

May 10—Ruler Mercury—A business proposition may appeal to you, but guard your expenditures closely, you need never give more than you receive.

May 11—Ruler Mercury—Favorable for business relations with strangers. Excellent for employment, also for health matters.

May 12—Ruler Venus—A business proposition may represent realization with regard to employment. Favorable for selling and collecting. Favors are granted.

May 13—Ruler Venus—Beware of bad investments or a sudden reversal in a business matter. Don't let fear lead you into something against your will.

May 14—Ruler Pluto—Keynote of success—Cooperation. Avoid disputes and legal affairs, attend to routine. Favorable for health.

May 15—Ruler Pluto—A business proposition may result in much happiness. Excellent for selling and financial settlements.

May 16—Ruler Jupiter—An optimistic outlook on life is always of much assistance, you should be able to make much progress today. Unexpected benefits in the department of employment indicated. The events of this day should result in greater security of position.

May 17—Ruler Jupiter—Postpone decisions regarding business matters do not speculate. Sell, but don't buy.

May 18—Ruler Jupiter—Beware of a bad investment, avoid speculative enterprises. There is danger in the pursuit of pleasure. Very good for work.

May 19—Ruler Saturn—A change of employment or a business offer is much favored. This is also an excellent day for seeking medical advice. Attend to practical affairs.

May 20—Ruler Saturn—Danger in the pursuit of pleasure, much emotional control is called for. Favorable for domestic life and visitors to the home.

May 21—Ruler Uranus—Guard against impatience in financial matters, beware of bad investments. Unexpected good fortune to your home.

May 22—Ruler Uranus—Business propositions are not what they seem, beware of a bad investment, do not speculate.

May 23—Ruler Uranus—A good day for making changes of location and position, also for general business. Excellent for selling, journeys, writings.

May 24—Ruler Neptune—An inspirational day very good for starting work on some new enterprise. Accept offers of cooperation.

May 25—Ruler Neptune—Guard your expenditures closely. A business offer may appeal to your speculative instincts, don't overlook the practical aspects of this situation.

May 26—Ruler Mars—Quite favorable for journeys, writings and intellectual activities. An inspirational day. An unexpected message may be very pleasing.

May 27—Ruler Mars—Guard your expenditures closely, curb a reckless tendency—don't buy or speculate. A business offer should be carefully considered.

May 28—Ruler Venus—Distinctly adverse for finances, don't buy or speculate. Avoid dealings with those in authority. Seek seclusion and attend to routine.

May 29—Ruler Venus—Very favorable for investments. Financial papers are much to your advantage, profit through business agreements and the settlement of financial matters.

May 30—Ruler Mercury—Unfavorable for discussion of financial matters, control a tendency to indiscretion in business affairs.

May 31—Ruler Mercury—Good for traveling, writings and professional affairs. A social contact may advance your fortunes, but a lack of discretion in a financial matter may result in a very unprofitable investment of time or money, be practical in these matters.

LIBRA

The Month of May for those
Born September 24th to October 23rd

FIRST WEEK

April 29th to May 6th.

A very favorable period for business affairs and the formation of a new system of relationship, whether this be business or personal. A very interesting and unusual personal contact may be made in a public place, around the first of May under the influence of Mercury conjunction Uranus. This would appear to be a personal influence, through which may come quite unusual opportunities for happiness and success. Those whose professional activities may call for an appearance upon a public platform whether this be in connection with education or entertainment, may expect to enjoy uncommon success as a result of a surprising development in connection with these matters. This also favors investments, heart interests, marriage, legal affairs, etc.

SECOND WEEK

May 6th to May 13th.

A business paper or financial proposition made at this time appear to be worthy of your favorable consideration. This is likely to take definite form under the double conjunction of Mercury with Mars and the Sun, May the 8th to May the 12th. It would appear that whatever good fortune may develop in connection with your business affairs at this time, you do not personally, have much to do with it, but the matter is forced by some other person—a business partner or personal associate. All you have to do is ride with the tide, it seems to be flowering in the direction in which you should go, however, this does not imply that you should merely drift, if you put forth as much effort in traveling with the tide of destiny as you would ordinarily put forth in traveling against it.

THIRD WEEK

May 13th to May 21st.

Now here is where the trouble starts—something has gone wrong in your department of speculations, or heart interests. However, there seems to be little enough emotion involved in this situation, unless it be of the negative variety, which denies everything that might make you happy. Saturn in your solar fifth house, is somewhat reminiscent of Cassius, whom Caesar distrusted, not without reason—"Yon Cas-

sius hath a lean and hungry look....such men be never at heart's ease, whilst they behold a greater than themselves"—all things considered, we believe you will be well advised to curb your ambitious urges and if you must be miserable, be cheerful about it.

Beware of bad investments and postpone decisions regarding business matters, also try to avert a crisis with regard to some business or financial association. Just put your pride in your pocket and you may find later that by some sort of magical, alchemical process it has turned into cash.

Quite a happy social event is probable around the 18th of the month and some very pleasing personal contacts may be made, but this is purely social, there isn't any money in it at least not for you, there might be for the other fellow if you are susceptible to flattery.

FOURTH WEEK

May 21st to May 28th.

This looks like a rather complicated situation in the business department, it seems that your friends and your financial affairs are involved, in a way that is not exactly profitable to you. A business paper, proposition or legal agreement may be presented at this time and calls for your careful consideration and we would advise you to postpone decision for a few days. We do not suggest that you think about the matter particularly because the more you think about it, the more complicated it becomes. All you have to do is listen, if you will just allow that Mercury in your ninth house to talk long enough, eventually the truth will be revealed and it promises to be quite some revelation. Don't believe all you hear under the square of Mercury to Neptune May the 21st. Messages received are likely to be very confusing and misleading. Jupiter in your first house, favorably configured with Mercury, is a symbol of good judgment and safety if you follow your own judgment about the matter and do not allow yourself to be influenced by forces and people you do not know or understand. Avoid mysteries, secret matters of all kinds, keep right out in the open, but remain silent about your personal or private affairs, beware whom you take into your confidence, just attend to practical affairs, do not allow any romantic or idealistic influences to lead you off on any detours or strange roads.

LIBRA—Daily Guide

May 1—Ruler Mercury—An unexpected meeting, a new friendship. Fortunate contacts with strangers or the return of an old friend.

May 2—Ruler Mercury—Powerful friends may render much assistance. Favorable for dealings with strangers. Guard your credit.

May 3—Ruler Moon—An important development in the department of legal affairs, social activities and partnerships. Guard against extravagance.

May 4—Ruler Moon—Beware of a professional conflict, avoid disputes and legal matters. Quite favorable for messages received.

May 5—Ruler Sun—Legally "you have not a leg to stand on". If you are in authority, forget it today. Avoid personal conflicts.

May 6—Ruler Sun—You will get farther if you don't try to go too far today. Avoid personal conflicts. Rather adverse for public relations.

May 7—Ruler Mercury—A progressive day with emphasis upon the department governing publicity and legal affairs. A favorable message may be received.

May 8—Ruler Mercury—A good business offer may be received, financial papers merit favorable consideration. Favorable for legal affairs.

May 9—Ruler Venus—A pleasing social event. Fortunate personal contacts may contribute to your success. Favorable for legal matters, partnerships, marriage, etc.

May 10—Ruler Venus—Some opposition to your personal plans may be met with. Cooperation will solve the problem.

May 11—Ruler Venus—A very unusual and profitable personal contact may be made. An extraordinary person. Favorable for investments and legal matters.

May 12—Ruler Pluto—Favorable for social affairs and legal matters, you should accept offers of friendship, cooperation and compromise.

May 13—Ruler Pluto—Adverse for legal matters, avoid personal conflicts. Unfortunate for changes of position, location or residence. Don't travel or write.

May 14—Ruler Jupiter—Very good for social affairs and investments. A confusing influence in the professional department, don't attempt to understand it today and avoid conflicts.

May 15—Jupiter—You have some very good friends, who should contribute much to your success. Favorable for legal affairs, partnerships, marriage and social activities.

May 16—Ruler Saturn—Excellent for business, journeys, legal papers, investments and speculative enterprises.

May 17—Ruler Saturn—A liberal dose

of the social urges may serve to harmonize a conflict. Avoid disputes, but if you meet trouble stand firm.

May 18—Ruler Saturn—Good in excess becomes evil, avoid changes of position, personal conflicts and legal affairs.

May 19—Ruler Uranus—A pleasant is favored, also very good for writings and legal papers and for entertainment enterprises.

May 20—Ruler Uranus—A pleasant journey, letters should be well received. Beware of destructive influences in your home; you may entertain trouble.

May 21—Ruler Neptune—Some good fortune through a journey or a letter. Avoid personal conflicts, adverse for legal affairs and changes of position.

May 22—Ruler Neptune—Beware of disputes, a message to your home may be ignored. Avoid legal affairs and beware of changes of position.

May 23—Ruler Neptune—A good day for journeys, writings and legal affairs. An important and helpful personal contact may be made.

May 24—Ruler Mars—Push your financial affairs. Excellent for traveling, writings and legal matters. Sign papers.

May 25—Ruler Mars—Personal good fortune may be attracted in some unusual manner. You will find success in a public place, travel, write, push your business affairs.

May 26—Ruler Venus—Quite a favorable day for speculations and entertainment enterprises, you will probably feel lucky.

May 27—Ruler Venus—A danger of personal injury. Avoid disputes and legal affairs. Moderation in your personal ambitions is advisable. Be not too aggressive or impulsive.

May 28—Ruler Mercury—Beware of changes of position. You may feel very restless and discontented, but you would feel that way anywhere. Distinctly adverse for legal affairs and messages received; avoid public activities.

May 29—Ruler Mercury—Travel and write; excellent for social affairs, meeting new friends and dealings with strangers. Also favorable for investments, legal matters and speculative interests. Distinctly an intellectual day.

May 30—Ruler Moon—Cooperation is the key-note of success for you today. Guard your speech and writings carefully. Quite favorable for traveling, but all moves should be carefully planned. Avoid strange roads.

May 31—Ruler Moon—A personal influence inclines to loss with regard to your position in life. Avoid changes. Unfavorable for legal affairs. Very good for social life and also quite good for traveling.

SCORPIO

The Month of May for those
Born October 24 to November 22

FIRST WEEK

April 29th to May 6th.

A legal matter of special significance may claim your attention and it appears that your chances for arriving at a satisfactory settlement thereof are excellent. In the department governing partnerships, marriage, legal affairs and your system of personal associations we find some very forceful and helpful influences. Briefly a better time for marriage or for entering any form of business partnership could scarcely be found. A personal contact with a powerful and aggressive individual may have the effect of greatly advancing your fortunes. For those who may have occasion to appear before the public, in an official or professional capacity, this should be a notably successful period.

Excellent for health matters and for employment. There should be an opportunity to attain to greater security with regard to your position in life, and domestic matters are greatly favored.

Very good for social affairs, we find you surrounded by many helpful idealistic, possibly somewhat peculiar friends, who however, are quite self-sacrificing in your behalf and through them you could find much happiness. Very favorable for the formation of new friendships, or for seeking favors through friends.

SECOND WEEK

May 6th to May 13th.

The conditions in your department of partnerships, marriage, legal affairs and personal relations continues to be favorable to your success.

The first two weeks of May are excellent for the settlement of legal matters and for dealing with Courts of Law. A legal paper or agreement may be presented for your consideration and generally speaking, it should be favorable to your interests. You should make every effort at this time to expand your system of relationship, make new contacts and new friendships. Push all matters that may involve the element of cooperation which depend for success upon a willingness on the part of others to work with you on a friendly basis.

The double conjunction of Mercury with Mars and the Sun, May the 8th to May the 12th, is likely to mark the culmination of the above matters and you should be prepared to accept all opportunities of the above nature that may be presented at that time.

THIRD WEEK

May 13th to May 21st.

A beautiful system of relationship of relationships has been developing in your department of partnerships and personal associations during the past couple of weeks, but here is where it strikes a snag. Mercury square Saturn, May 15th threatens to put an end to the whole affair, suddenly and finally. This would be most unfortunate; you had better fix it in advance of this week in such a manner that such a disastrous event may not take place. Saturn in that department which governs your domestic life does not appear to be greatly in sympathy with this situation and may at this time conclude that this thing has gone far enough; well, perhaps, it has, after all it is a long road that never turns. If you have made the most of your opportunities during the recent past you can afford to pull up to the side of the road and wait for further developments.

This much you should know, that whatever you may desire from the department of legal affairs or partnerships, you had better see that this matter is concluded prior to or not later than the 13th of May, for after that there is nothing for you so far as the immediate future is concerned.

There appears to be some conflict regarding employment here and this entire situation might take the form of an illness which would be directly due to self-indulgence and a lack of discretion in the matter of food. This can be easily avoided.

FOURTH WEEK

May 21st to May 28th.

Mercury square Neptune, May 21st, indicates trouble through deceptive friends. Neptune symbolizes mysterious friendships—peculiar, idealistic associations with some very strange people and which are productive of sorrow and disappointment. This may be someone who comes to you for assistance regarding some personal matter; but whatever the form you are advised to be cautious and strictly practical in this matter. Guard your speech and writings carefully and take no heed of any messages or advice that may be received regardless of how friendly it may appear to be. Furthermore, don't accept any business propositions that may be offered just now; it would be advisable to reserve your decision regarding such matters until after the 23rd of May.

SCORPIO—Daily Guide

May 1—Ruler Moon—Beware of danger, adverse for traveling and writing. Favorable for domestic affairs. Good fortune visits your home.

May 2—Ruler Moon—Favorable for business, employment and professional affairs. Caution with regard to journeys and writings advised.

May 3—Ruler Moon—Financial gain or an important change regarding employment. Caution with regard to journeys and writings is necessary.

May 4—Ruler Sun—Sell, seek business settlements. Avoid public activities. Beware of accidents while traveling.

May 5—Ruler Mercury—"Hear no evil. Speak no evil; See no evil." Attend strictly to routine. Beware of accidents while traveling.

May 6—Ruler Mercury—Avoid discussions of business matters. You have some very peculiar friends—interesting, but very impractical.

May 7—Ruler Venus—Considerable benefit accruing in the department of business relations and employment. Business offers will merit favorable consideration.

May 8—Ruler Venus—You may contact a pleasant and attractive person, who will contribute to your happiness and success.

May 9—Ruler Pluto—Quite favorable for health and employment. Favorable for seeking a position or for engaging employees. Also for business settlements.

May 10—Ruler Pluto—Beware of accidents while traveling, avoid publicity, legal affairs and disputes. Don't cut any corners.

May 11—Ruler Pluto—You can avoid changes and journeys, ignore messages received and avoid conflicts.

May 12—Ruler Jupiter—Good for health and employment. Seek a position and promotion also favorable for surgery.

May 13—Ruler Jupiter—Concentrate on professional matters, very adverse for journeys and writings, also for social affairs. Beware of accidents.

May 14—Ruler Saturn—Quite dangerous for traveling, beware of accidents. Fortunate for domestic affairs and visitors to the home.

May 15—Ruler Saturn—A sense of practical values applied to business problems should result in much success. Seek a position or promotion.

May 16—Ruler Uranus—Excellent for changes of position, for investments in Real Estate and business settlements in general. Force these matters.

May 17—Ruler Uranus—Quite adverse for journeys, writings and health. A good business offer may be presented—if you can get down to business.

May 18—Ruler Uranus—A reversal through a letter or a journey. Avoid these matters. Guard your speech and writings carefully. Domestic matters are favored.

May 19—Ruler Neptune—Favorable for changes of position or residence, also for visitors or messages to the home. Opportunity may knock at your door.

May 20—Ruler Neptune—Very dangerous for traveling, guard your speech and writings carefully. Favorable for social affairs, but don't do all the talking.

May 21—Ruler Mars—Much caution with regard to journeys and writings is called for, beware of an accident while traveling.

May 22—Ruler Mars—Adverse for traveling and writings, much discretion is necessary. Guard your speech carefully, sign no papers.

May 23—Ruler Mars—Personal finances favored, but adopt an aggressive attitude in these matters. Good for employment also for matters of health.

May 24—Ruler Venus—Financial good fortune and success in matters of health and employment is indicated. Attend to business, keep your own counsel.

May 25—Ruler Venus—A sudden and surprising, but pleasing termination to some important matter. A business paper appears to be to your advantage, deal with those in authority.

May 26—Ruler Mercury—A good day for financial discussions. A good opportunity to your home, but it seems to be in a peculiar form.

May 27—Ruler Mercury—You can talk yourself out of a tight corner, but use your head first and keep out of trouble. Quite favorable for traveling, but beware of accidents through reckless haste.

May 28—Ruler Moon—Quite adverse for traveling, plan your moves carefully and be sure that you know where you are going and why. Unfavorable for selling and for seeking business favors. Avoid changes and guard the health closely.

May 29—Ruler Moon—A profitable journey or letter. Excellent for health and employment. A private message may advance your fortunes. A social contact contributes to success.

May 30—Ruler Sun—Avoid disputes with friends over business matters, but do not force business settlements. Unfavorable for employment, attend to routine duties, keep your own counsel.

May 31—Ruler Sun—A progressive day, unexpected good news is received, but guard your speech and writings carefully. Avoid a tendency to extravagance. Beware of a bad investment.

SAGITTARIUS

The Month of May for Those
Born November 23rd to December 21st

FIRST WEEK

April 29th to May 6th.

Some very powerful and helpful forces are at work in your department of profession, health and employment. With Neptune well aspected in the mid-heaven of your chart this is a time when you might reasonably to attain the unattainable. A fortunate change of profession is probable, this does not appear to directly involve a change of position or location, so much as it is indicative of a change in the nature of your work, which results in much constructive activity, achievement and advancement.

A more or less permanent readjustment of your personal circumstances may proceed from a well aspected Saturn in your journey or a letter and at any rate provides an excellent opportunity for intellectual expression.

The department of investments, heart interests and social affairs is also greatly favored and some great and quite unexpected happiness is likely to result from the sudden realization of an ambition. This is a most excellent period for creative mental work, the inventive faculties are powerfully stimulated.

SECOND WEEK

May 6th to May 13th.

The constructive influences incident to the preceding week are still much in evidence and in operation through the same department of life, that is to say, profession, credit, health and employment. Neptune is still effective in your professional department under the stimulation of a trine from Mercury in your department of employment. This is a very helpful configuration for anyone who may desire employment, such as secretarial work, teaching or anything that is distinctly mental or commercial. This also favors changes in employment and consultations regarding health matters and is favorable for securing adequate medical treatment for any indisposition there may be.

THIRD WEEK

May 13th to May 21st.

Mercury is still in your sixth house and will therefore center your thoughts upon matters of health and employment bringing influences to bear upon you which may cause these matters to assume much prominence. So long as Mercury is well aspected,

this may result in many constructive changes in this department. However, since at the present time, Mercury is in affliction with Saturn such influences are not likely to be so constructive and the indications are rather that the less thinking and talking you do the more secure your circumstances will be. Perhaps it is not quite accurate to say that it is wrong to think—thinking never has yet done anyone any harm, it is what people call thinking that does the damage—what people do when they think they are thinking, the right name for this is worry and that has never helped anyone yet. Worry over ill-health might bring on a condition of hypochondria and aggravate any tendency to illness that there might be through generating an extremely nervous condition. In fact, if you should suffer from ill-health at this time you may be assured that it is practically all mental and there is probably nothing wrong with you, unless it be a nervous complaint and modern medical science advises us that such an illness does not exist. Therefore, since you can think yourself sick, you might try thinking yourself well, it should work equally well both ways.

A very unfortunate time for traveling and you are warned to guard your speech and writings carefully. It would be safest to postpone all decisions and changes.

FOURTH WEEK

May 21st to May 28th.

Here is an unfortunate condition in the department of partnerships, legal affairs and personal association. It is unfortunate because you seem to be in contact with someone who talks a great deal without saying very much. You can listen—you'll have to, but do not act on any information received. There would seem to be an influence which tends to incite you to make a change professionally around the 21st of May, but such a change would not be in your best interests.

Quite a good social period, particularly about or following the 23rd of the month, but you are advised to allow this to be purely a social matter, you may contact some very interesting and friendly people, people who will assist you to the realization of your hopes, wishes and aspirations of life, but this should not directly affect your professional connections at this time. Quite favorable for legal settlements out of court.

SAGITTARIUS—Daily Guide

May 1—Ruler Sun—An important professional day. Excellent for seeking advancement, for new enterprises, also traveling and writing, but save your money.

May 2—Ruler Sun—Favorable for investments, legal affairs, journeys and writings. Adverse for selling and collecting.

May 3—Ruler Mercury—Guard against excessive expenditures. Sell, do not buy. Beware of accidents while traveling.

May 4—Ruler Mercury—Do not speculate or force business settlements. Quite favorable for legal matters and intellectual contacts.

May 5—Ruler Venus—Quite favorable for health and employment, but guard your expenditures.

May 6—Ruler Venus—Adverse for public relations, beware of danger in the pursuit of pleasure.

May 7—Ruler Pluto—Quite favorable for legal affairs and social life. Investments and affairs of the heart also favored. Beware of journeys.

May 8—Ruler Pluto—A message of considerable importance may be received. Favorable for legal affairs and social contacts.

May 9—Ruler Jupiter—Excellent for investments, speculations, entertainment enterprises, heart interests and for contacting new friends.

May 10—Ruler Jupiter—New friends contacted today may contribute much to your success. But cooperation is called for.

May 11—Ruler Jupiter—A business journey or a financial paper may constitute a very good opportunity. Excellent for investments, heart interests and entertainment.

May 12—Ruler Saturn—Favorable for personal finances and investments, speculation. A mysterious message may result in much happiness. Push your affairs.

May 13—Ruler Saturn—Beware of a business loss through a bad investment, avoid speculation, don't permit fear or doubt to dominate your financial decisions.

May 14—Ruler Uranus—A pleasant journey may result in much happiness. You may write a good sales letter, do not speculate. Postpone business decisions.

May 15—Ruler Uranus—A fortunate day for speculation, long journeys, publicity and for messages received.

May 16—Ruler Neptune—A sudden journey or unexpected letter quite favorable for investments and writings. Concentrate upon practical affairs.

May 17—Ruler Neptune—A very dangerous business day, you should postpone business decisions and avoid speculation. Favorable for traveling and writing.

May 18—Ruler Neptune—A tendency to discontent may result in a sudden reversal. Avoid hazards, don't buy, sell or speculate. Quite favorable for journeys and writings.

May 19—Ruler Mars—Favorable for journeys and writings, force your financial affairs, buy, invest, sign business papers. Put your money to work.

May 20—Ruler Mars—You might lose your "Chance at Heaven" by a selfish, obstinate, stubborn attitude today. Guard your expenditures closely.

May 21—Ruler Venus—The less you talk about money the more you will have. Quite adverse for business matters and for speculations.

May 22—Ruler Venus—Beware of bad investments, a financial paper may be rather leaky. Adverse for business discussions and decisions.

May 23—Ruler Venus—A good social day. Excellent for the commencement of new enterprises, also for investments, speculations and hazardous adventure.

May 24—Ruler Mercury—Favorable for traveling, also for writings, investments, affairs of the heart and in general self expression.

May 25—Ruler Mercury—An unexpected meeting with a stranger or an old friend gives happiness. Favorable for traveling, writings, legal affairs and investments.

May 26—Ruler Moon—Favorable for journeys, correspondence. An inspirational influence should be very helpful in intellectual affairs.

May 27—Ruler Moon—Avoid disputes with friends you may quarrel with some good fortune. You have some very powerful friends, but they may not be in sympathy with your desires.

May 28—Ruler Sun—Unfavorable for business and personal finances, don't speculate. Avoid conflicts with friends. Adverse for legal affairs.

May 29—Ruler Sun—A day of victory, achievement and financial gain. Push your affairs. An unexpected message constitutes a pleasant surprise. Excellent for investments, speculative enterprises entertainment, social affairs.

May 30—Ruler Mercury—A message from a friend may displease you very much. There is nothing to be gained by an argument, it will pay you to listen and keep silent. Quite adverse for legal affairs and for dealings with those in authority.

May 31—Ruler Mercury—A favorable message from someone in authority. Good for seeking favors, also for health and employment, but guard your expenditures closely, curb a tendency to extravagance, beware of a bad investment.

CAPRICORN

The Month of May for Those

Born December 22nd to January 19th

FIRST WEEK

April 29th to May 6th.

Here is a source of information, which is somewhat mysterious. You may not entirely understand this message yourself, however, even if you don't understand it, it is a good lead and you will follow the right path if you are guided by this light. You might as well know the reliability of this source of information cannot be definitely tested by way of tangible proof at this time, what is required here is faith, which, no doubt, you will have. Something may happen, which may make you conscious of the existence of some protecting power, which like a Guardian Angel looks after your individual welfare. However, this says nothing about the form which this protecting power may take. "Faith is the substance of things hoped for, the evidence of things unseen," and there is a faith that can purify and transform evil into good, a power that can make dreams come true "that can move mountains."

Uranus in your solar fourth house tending to many sudden and radical changes of position or location will be stimulated in a constructive manner by the Transit of Mercury through this department at this time and in favorable aspect to Saturn, there may be a domestic change or a change of position, which will result in greater security, financially.

SECOND WEEK

May 6th to May 13th.

The favorable conditions of the past week should continue during this period with more emphasis upon the department of investments, heart interests, journeys and public life. A very pleasing message may be received. Excellent for the commencement of a new and ambitious enterprise, ability for creative mental work should be greatly augmented, this should be of much assistance to anyone connected with higher educational work, publishing, advertising, entertainment enterprises, politics and investment houses. A period of rapid progress and development.

THIRD WEEK

May 14th to May 21st.

Right here is where you stop proceedings and if you don't something will stop you.

Particularly dangerous for matters connected with finances and investments. Be-

ware of becoming involved in a speculative enterprise, do not allow yourself to be deceived and stampeded out of a good thing through fear of loss. This is a time to sit tight and make no changes that are not forced, such as may be forced you need not regret, since you can't help it. It may furnish some consolation to know that at this time what you want and what you need are not necessarily the same, in fact, it appears that you cannot have what you want for the very good reason that you can't afford it and certainly it would be decidedly bad business to go into debt for it.

Venus in transit through your solar fourth house will oppose Jupiter, May the 18th, and this would seem to promise some professional readjustment or it might be domestic. At any rate there appears to be a probability of a change or a new influence in your home or in your field of activity, which is very pleasing, though not necessarily profitable, on the contrary it may be quite expensive. Again we say watch your overhead and guard your credit closely, this thing looks top-heavy.

FOURTH WEEK

May 21st to May 28th.

There is a disturbing influence in your house of employment operating through an afflicted Mercury in that department. This will, no doubt, center your thoughts on matters of health and employment and since Mercury is affliction with Neptune, no doubt, there will be a tendency to worry a great deal and needlessly about these matters.

This would be a most unfortunate time for making changes of employment and for traveling. Guard your speech and writings carefully, particularly when such concerns your work. In some instances this might manifest as much gossip and many disturbing rumors at your place of employment. However, with an afflicted Neptune involved we would be inclined to think that it is after all just a rumor—nothing more—forget it. A trine of Mercury to Jupiter, May 23rd, is an indication that there is really nothing to worry about and at least so far as those in authority are concerned, such powers are definitely in your favor and the ultimate result should be advancement and improvement of your working conditions, if you will attend to your work and do not spend all your time wondering whether you ought to work or not.

CAPRICORN—Daily Guide

May 1—Ruler Mercury—Avoid changes of plans or personal circumstances. Very good for personal finances.

May 2—Ruler Mercury—Adverse for legal affairs and social contacts. Favorable for business, health and employment.

May 3—Ruler Venus—Quite favorable for health and employment, avoid changes of position, guard against extravagance. Sell do not buy.

May 4—Ruler Venus—Adverse for legal affairs, social activities. Favorable for employment and health matters.

May 5—Ruler Pluto—Avoid legal affairs and changes of position. Adverse for social contacts, avoid disputes.

May 6—Ruler Pluto—Patience is called for, beware of accidents. Dangerous for health matters.

May 7—Ruler Jupiter—Favorable for health and employment, seek a position or promotion, you cannot work too hard.

May 8—Ruler Jupiter—A progressive day. Excellent for employment and health. Seek information, favorable for speculations.

May 9—Ruler Saturn—An ambitious and aggressive urge tempered with a reasonable consideration of practical values may result in success. Favorable for investments.

May 10—Ruler Saturn—If you stand still good fortune may find you. It would be unwise to make a change of position or location today.

May 11—Ruler Saturn—A very good day for financial settlements. Favorable for domestic affairs and visitors to the home.

May 12—Ruler Uranus—Force the settlement of a business matter or legal affairs. Sell, don't buy. Favorable for changes of location, position or residence.

May 13—Ruler Uranus—An urge to a change of position or field of activity should be curbed. What you need is faith and courage. Don't be afraid of facts—they won't hurt you.

May 14—Ruler Neptune—You may contact a very peculiar person, who does not appear to have much of practical value to offer. Favorable for personal finances, attend to business—your own business.

May 15—Ruler Neptune—Excellent for selling and for collections, for seeking financial favors and business settlements. You should force your business affairs today.

May 16—Ruler Mars—Very favorable for speculations and for forcing business settlements. Domestic changes are favored. Visitors to the home may bring good fortune.

May 17—Ruler Mars—Quite adverse for social life, avoid sentimental matters and legal contacts. You cannot succeed on promises made to you today.

May 18—Ruler Mars—Quite a good business day, but radical tendencies should be controlled. Concentrate on financial problems and be practical.

May 19—Ruler Venus—A satisfactory settlement of a financial matter. Favorable for signing business papers, this is a day to take action in business affairs.

May 20—Ruler Venus—Beware of personal injury through recklessness, undue haste, take your time. Avoid hazardous ventures, seek seclusion.

May 21—Ruler Mercury—Beware of impatience. Personal pride may undermine your success, favorable for independent ventures, but control your speech.

May 22—Ruler Mercury—Control a tendency to restlessness and indiscreet speech, unfavorable for domestic changes.

May 23—Ruler Mercury—A secret message or conference relative to a business matter should result in a profitable solution of such problems. Good fortune may visit your home.

May 24—Ruler Moon—Favorable for making a change of position, residence and for entertainment. Powerful assistance to success may be received. Favorable for dealings with strangers.

May 25—Ruler Moon—A turning point probably a change for the better, seek favors of those in authority. Favorable for business offers.

May 26—Ruler Sun—Financial benefits may be received, accept opportunities. Beware of a conflict with those in authority.

May 27—Ruler Sun—Favorable for dealing with those in authority but you may run into serious trouble today, if you cross anyone in power. You need a good sense of balance—that is to say justice.

May 28—Ruler Mercury—If you don't expect too much your disappointment may be less. Avoid conflicts with those in authority and also beware of changes of position or residence. Guard the health closely, beware of accidents.

May 29—Ruler Mercury—A profitable message from someone in authority. Excellent for business settlements, selling, collecting and for expansion of credit. A profitable change of position or location is possible.

May 30—Ruler Venus—An important social day, but guard the health closely, great danger of accidents while traveling and through falls. Avoid high places and hazardous ventures.

May 31—Ruler Venus—A very unusual and fortunate social contact may be made. Excellent for dealings with strangers. Favorable for legal matters, publicity, business offers and conservative investments. Unfavorable for changes of residence or field of activity.

AQUARIUS

The Month of May for those

Born January 20 to February 18

FIRST WEEK

April 29th to May 6th.

This is an excellent business period a very fine offer may be received which is worthy of your favorable consideration. However, quite apart from the business and financial implications of these configurations this will, no doubt, give a strong urge to delve into secrets and mysteries of all kinds and with very good results. A good time to go "pearl diving," not only will you be safe, but you may also expect to make quite a rich haul. Generally speaking, this brings gifts and benefits from hidden sources and in a mysterious manner. Furthermore, it might be said that any new enterprise you might commence at this time could be expected to be very successful and profitable. It may be said, however, that in order to get the best results from this it should involve a cooperative arrangement.

Uranus in transit through your third house naturally tends to many sudden journeys, unexpected and radical changes in your immediate environment and personal associations. This Uranian influence will be powerfully stimulated during this period by the transit of Mercury through this department, the result may be a change, journey, letter or legal paper which may radically alter your life and result in greater personal security.

SECOND WEEK

May 6th to May 13th.

A trine of Mercury to Neptune, May 7th, may provide an opportunity for a fortunate change of location—position, residence or field of activity. Excellent for either the commencement of a new enterprise or the final settlement of a business agreement. This is the time for action, these matters are likely to culminate May the 8th to May 12th inclusive.

THIRD WEEK

May 13th to May 21st.

Not so good, what you want to do and what you must do are two entirely different things. The tendency is to feel quite depressed, discouraged and inclined to change your position, because you don't feel that there is any opportunity for self-expression where you are. As a matter of fact, you wouldn't find such an opportunity anywhere right now, though you were to travel to the end of the earth, you would

not be able to escape from yourself.

Saturn in your first house is an urge operating through you to bring everything which you have to do to one fixed point of balance. It tends to concentrate your personal activities and organize your environment within very rigid limits. This will tend to greater security in your personal affairs, but through such a concentration of your personal forces it might make you extremely self-entered. Saturn is the planet of crystalization which results from a perfect equilibrium of forces, however, this point of balance or equilibrium is placed within the self and could make you extremely selfish, ruthless and determined in the matter of advancing your own personal interests with the result that crystalization becomes extreme. An afflicted Saturn is not merely hard boiled he is petrified and when crystalization is permitted to go to this extreme the inevitable result is death,—figuratively or otherwise. However, if the point of balance and equilibrium is found outside the self, it will then manifest as devotion to duty, a cause or a principal and Saturn then becomes a pillar of society, a benefactor of the race. It is important that you understand these two phases of the Saturnine influence and endeavor to manifest the more constructive social phase since a powerful influence may be at work in your domestic department of force the Saturnine tendencies along the more negative or selfish lines. If you yield to this negative phase and permit yourself to become discouraged and depressed it might have the ultimate effect of undermining the foundations of your success.

FOURTH WEEK

May 21st to May 28th.

Rather unfavorable for investments and business propositions around the 21st of the month, therefore it would be advisable to postpone all decisions regarding these matters and beware of speculative enterprises and financial schemes. They do not seem to offer anything except an opportunity to become involved in some one else's business troubles. Following the 23rd of May the balance of this week is very favorable for journeys, writings, creative mental work, publishing, advertising and legal affairs. A very important message may be received which may bring you a fulfillment of your hopes, and ambitions. Distinctly a progressive influence and tending to promote a rapid development.

AQUARIUS—Daily Guide

May 1—Ruler Venus—Very favorable for health and employment. Personal affairs prosper, do not travel. Beware of writings.

May 2—Ruler Mercury—Adverse for health and employment and practical endeavors. Adverse for journeys and writings.

May 3—Ruler Pluto—Adverse for journeys and writings. An important personal contact may be made. A new friendship may be beneficial, but avoid legal affairs, sign no papers.

May 4—Ruler Pluto—A dangerous day for health and employment. Avoid conflicts and beware of accidents while traveling.

May 5—Ruler Jupiter—Quite a favorable social day, but beware of accidents while traveling. Guard your speech and writings carefully.

May 6—Ruler Jupiter—If you follow your natural inclinations you will seek social life, new friends, but beware of an accident while traveling.

May 7—Ruler Saturn—A journey, a letter or investment may tend to financial security. Favorable for buying and business settlements.

May 8—Ruler Saturn—Organization, efficiency and conservation in business affairs results in financial security. Favorable for journeys, writings and investments.

May 9—Ruler Uranus—Unexpected financial good fortune is the result of a journey or letter. A day that you do the unexpected or unconventional with successful results.

May 10—Ruler Uranus—Write that letter, it will probably meet with a generous response. Favorable for traveling. But don't expect something for nothing.

May 11—Ruler Uranus—A day of opportunity, journeys, correspondence and writings are favored.

May 12—Ruler Neptune—Good for legal matters, social contacts, marriages, partnerships, journeys and correspondence. This looks like "A Dream Walking".

May 13—Ruler Neptune—Guard your speech and writings carefully, very dangerous for traveling, avoid disputes, attend to routine and keep busy.

May 14—Ruler Mars—Dangerous for traveling and unfavorable for employment. Guard your diet closely. Quite a good social day.

May 15th—Ruler Mars—Favorable for hazardous ventures, for seeking settlements of disputes, for legal matters, journeys and writings.

May 16—Ruler Venus—A new and original venture, this appears to be quite favorable

and should be successful. A day of achievement.

May 17—Ruler Venus—Excellent for practical endeavors. Attend to business, forget the social life.

May 18—Ruler Venus—A very good social day. Good fortune through a letter or a journey. Don't travel any strange roads.

May 19—Ruler Mercury—Do not sell. Favorable for traveling—alone.

May 20—Ruler Mercury—Rather dangerous for traveling, seek social life. Visitors to the home may bring good fortune.

May 21—Ruler Moon—Very adverse for traveling and writings, keep your own counsel. Success through strangers.

May 22—Ruler Moon—It would be advisable to postpone a journey and guard your speech and writings carefully. Keep your own counsel.

May 23—Ruler Moon—Favorable for journeys and writings and for benefits through friends. A social event may result in a fortunate change.

May 24—Ruler Sun—If you require the support of someone in a position of power and influence this would be the day to seek it.

May 25—Ruler Sun—Quite favorable for legal matters, be guided by a conservative influence. An interesting friendship may be formed.

May 26—Ruler Mercury—A very good day for employment and health matters. Much discretion with regard to journeys and writings is advised.

May 27—Ruler Mercury—A very displeasing message may be received. Admonition, say nothing, think it over. Avoid publicity and hazardous ventures.

May 28—Ruler Venus—Many disturbing influences surround you. Beware of journeys, also of loss in the department of investments and heart interests, through impatience, doubt, fear or jealousy.

May 29—Ruler Venus—A very unusual social contact should open new avenues for progress, excellent for legal affairs. Favorable for journeys and writings.

May 30—Ruler Pluto—Avoid discussions of business matters. A disappointment through the lack of cooperation on the part of a business associate. Much discretion with regard to journeys and writings is necessary. Attend to routine.

May 31—Ruler Venus—Favorable for business papers and offers. Also for legal matters, accept life as you find it, don't quarrel with good fortune. Journeys are likely to be expensive.

PISCES

The Month of May for Those
Born February 19th to March 20th

FIRST WEEK

April 29th to May 6th.

This should be a very successful period with regard to partnerships, legal affairs and personal relations. It is possible that you might make contact personally, with some very helpful influences at this time. They appear to be in some way peculiar—rather intangible shall we say—and difficult to define and with reference to such individuals as may fit into this picture, Neptune symbolizes a mysterious, elusive sort of person, who is very difficult to understand, yet nevertheless has much of practical value for you. Journeys, writings, and legal papers are much favored, also there is an indication of a rather surprising development in your financial affairs, possibly a business paper, which comes as quite a complete surprise, but nevertheless offers an opportunity for sudden and unexpected financial gain, which may be relatively large. This would be the time to force the settlement of business and financial matters.

SECOND WEEK

May 6th to May 13th.

The favorable influences which we noted for the preceding week in the department of legal affairs, partnerships, journeys and correspondence may be expected to continue throughout this period. If you should happen to have a court case pending or any matter which involves a legal contract otherwise letters of special importance under advisement, this would be the time to conclude the matter and force these issues. It is probable that some very important changes may take place at this time, but it is also important that these matters be concluded prior to May the 13th.

THIRD WEEK

May 13th to May 21st.

Mercury in transit through your third house will, no doubt, give a great desire for traveling, change or intellectual expression, yet under a square to Saturn such is likely

to meet with delays, obstructions and disappointments. Guard your speech and writings very carefully at this time, control a tendency to worry, since your mental outlook is so serious you might profitably apply yourself to serious matters, but for some other purpose than that of merely looking at the dark side of life. Mercury under affliction tends to become very nervous and restless, yet is the finest combination for intellectual achievement if one is not afraid to face facts. You would be well advised not to travel during this week unless such be absolutely necessary. At any time we can avoid much trouble by only doing what is necessary and particularly does this apply to a period when Saturn is under affliction.

There would seem to be a likelihood of some financial agreement coming up for consideration at this time, we do not advise you to decide negatively regarding this, but it would seem to be advisable for you to withhold your decision and save your money just now. Quite good for selling (cash sales) but, quite unfavorable for buying or investment.

FOURTH WEEK

May 21st to May 28th.

Distinctly adverse for legal matters, there seems to be quite a deceptive influence in this department. This also applies to partnerships, agreements and personal contacts; guard your speech and writings carefully and beware of a whimsical change of position in response to outside influences which you probably do not clearly understand. A message to your home or involving a domestic matter may be quite disturbing, yet does not appear to merit very serious consideration. Distinctly adverse for dealing with lawyers and courts of law. There seems to be some very helpful and profitable influence at work in the business department and most of your difficulties would seem to be mainly social, therefore it would be wisdom to attend to business and forget the social life for a few days. Avoid conflicts, sell but do not buy.

PISCES—Daily Guide

May 1—Ruler Pluto—Beware of mixing friendship with business. Deceptive friends are a menace to your success. Favorable for health and work, attend to routine.

May 2—Ruler Pluto—Beware of bad investments. Excellent for work but guard your expenditures closely.

May 3—Ruler Jupiter—Do not mix friendship with business. Favorable for work, attend to routine.

May 4—Ruler Jupiter—Quite dangerous for business, personal finances and investments, do not speculate. Quite fortunate for visitors and messages to the home.

May 5—Ruler Saturn—Pursue a conservative policy in business matters and investments—think it over.

May 6—Ruler Saturn—A depressing day. Travel, seek social life, but beware of visitors to the home.

May 7—Ruler Uranus—Quite good for changes of position, location and for domestic affairs. Sell—for cash.

May 8—Ruler Uranus—A journey or a letter may suddenly and radically alter your circumstances.

May 9—Ruler Neptune—A peculiar development in the department of partnerships, marriage or legal affairs may result in financial success. You should be a magnet for money today.

May 10—Ruler Neptune—A very good business offer may be received. Sell, make collections, don't buy or speculate.

May 11—Ruler Neptune—Force the settlement of financial matters. An opportunity for unusual sudden and great financial gain. Favors speculation, buying, etc.

May 12—Ruler Mars—Finance and employment are harmonious. Favorable for the settlement of such matters. Push your business, also good for consideration of health problems.

May 13—Ruler Mars—Watch the traffic signals and especially with regard to business matters—you must be patient. The depressing influence of friends on business matters should be avoided.

May 14—Ruler Venus—An opportunity for financial gain may be presented. Private financial affairs are favored, do not speculate. Avoid social functions.

May 15—Ruler Venus—Excellent for personal finances and employment, also for health matters.

May 16—Ruler Mercury—A friendship may be formed. Strangers contacted today may contribute much to your success. Favorable for legal affairs.

May 17—Ruler Mercury—Work—alone in seclusion. You have some expensive friends. Accept no favors, avoid speculations.

May 18—Ruler Mercury—An unexpected meeting with an old friend or a new contact. Don't allow yourself to be influenced in your business decisions thereby. Seek seclusion keep your own counsel.

May 19—Ruler Moon—Do not permit friends to influence you in business matters, resist financial demands. Plan your business affairs, but keep your own counsel.

May 20—Ruler Moon—Avoid disputes with friends over business and financial matters, but a social contact in your home may advance your fortunes.

May 21—Ruler Sun—Beware of disputes with friends over financial matters. There is no profit in this connection. Postpone business decisions.

May 22—Ruler Sun—Avoid discussion of financial matters with friends, guard your credit closely.

May 23—Ruler Sun—A day of progress, seek advancement. An important message may be received, which provides new opportunities.

May 24—Ruler Mercury—Favorable for financial affairs and professional matters. A day of achievement. Deal with those in authority, seek advancement.

May 25—Ruler Mercury—Deal with those in authority. Favorable for health, employment, selling and collecting, also for seeking financial favors.

May 26—Ruler Venus—An unexpected development in the business department calls for considerable discretion, don't build on promises.

May 27—Ruler Venus—A very good social day but quite dangerous for business matters, don't let anyone rush you into anything—it can wait.

May 28—Ruler Pluto—A deceptive influence in the house of friends is adverse to business. Postpone business decisions. Don't buy or speculate.

May 29—Ruler Pluto—A business paper or proposition may constitute a pleasant surprise. This matter would merit careful and favorable consideration. Financial gain through business relations with friends. Excellent for legal matters.

May 30—Ruler Jupiter—A financial paper may be presented for your consideration. Cooperation is the key-note of success. Beware of accidents while traveling.

May 31—Ruler Jupiter—Avoid mixing friendship with business. The influence of a friend upon a financial matter is likely to be very expensive to you. Don't build on promises or spend money you don't have. Attend to routine duties. Quite favorable for social affairs, but guard your expenditures closely.

(Continued from page 10)

In regard to the distribution of births throughout the Zodiac in different countries, I certainly think you would be right in expecting different results in different countries, for if there is anything in national character it should certainly be featured in the horoscope.

Radiation. The difference in the radiation received (not emitted) from the sun in winter and in the summer has very little effect on the seasons. In the northern hemisphere in winter the earth indeed receives more heat as a whole as the sun is in Perihelion. I do not in the least understand your saying that we receive no heat from the sun. This is no question of theory at all but a plain obvious fact. In your reasoning about fire you have compared heat and pain—but the one thing is objective and the other subjective and no such comparison is possible.

The theory of the extra galactic origin of the cosmic rays is merely a tentative theory and something more definite may be arrived at some day; but that they originate in the earth is, so far as one can see, inconceivable. So tremendous is their energy and penetrative power that their source if in the earth could hardly be overlooked. They are much more intense than Uranium emanations, for instance. Another is no current turn from the sun in the usual meaning of the word.

Further, the *direction* of motion of the cosmic rays is towards the earth.

I have read the four articles with interest. The first two deal with physical astronomy and economics, then astrology; while the last is descriptive. I presume these are introductory to the theme "Can Astrology Foretell the Future?" By the way, I always understand that Fomalhaut was the Watcher of the South; but you may be right.

Your reference to the horses of the Apocalypse is very interesting, but whether the symbolism is definitely astrological in origin or whether on account of their obvious applicability we have simply a coincidence I should not care to decide. At the probable date of the writing of the Apocalypse—astrology of a very debased character was rife in the Roman Empire and I think it doubtful whether the writer, whoever he was, but undoubtedly a Christian, would consciously use the symbolism of a hated superstition.

I think that our aims in the matter of astrology are very different, but they may be complementary and after many a detour may meet on some common ground. Be that however as it may, I am very pleased to have had the opportunity of exchanging views on a most interesting subject.

Yours very truly,

A. Ritchie Scott.

(TO BE CONTINUED)

(Continued from page 6)

Mars—Venus

With this pair we deal with the centrifugal and centripetal forces of experience. Mars "shows the tendency of the life in expressing itself, moving from itself outward without particular regard for external conditions". It is "the first impulse of being in all outer revelation of self" (Marc Jones). In other words it is the desire to move away from the center, the primordial Eros, the *libido* as it flows through the psyche outward. It symbolizes all beginnings, all initiating impulses; self-projection as a release of sheer energy.

That which goes out from the psyche as Mars return to it as Venus. Venus is the affect experienced as a result of the way in which the outer world reacted to our Martian outgoing. The Martian impulse returns home filled with experiences, probably with bruises and possibly with wisdom. Venus is the end of the experience and what we have gathered as a result of it; thus it is the purveyor of consciousness, of knowledge and wisdom to the ego. It is symbolized by bees; because bees bring back to the hive the honey gathered from the flowers which are also the last product of the plant. It is therefore the symbol of all arts, of all social wisdom, of all

that is matured out of experience. It means also emotions; because we get emotions, or affects, as a result of our outer contacts. Out of relationship arise joy or pain, songs or despair, art or sensuality. The soul of relationship is love. Mars love is the love that is desire, self-projection, brute force toward self-reproduction in end through others, but with no regard for the others. Venus love is the love that is wise, the love that arises from true interchange, from altruistic companionship: love-wisdom.

This then is the outline of the conscious trinity of basic life-powers, each active and reactive, which astrology symbolizes as Saturn-Moon, Jupiter-Mercury, Mars-Venus. Every living entity must first *be* itself as a definite form (Saturn); then it must *maintain* itself as a self-compensating system (Jupiter); finally it must *reproduce* itself through creative action (Mars). "Being" manifests through feelings (Moon); "maintenance" operates through intelligence or instinct (Mercury); "self-reproduction" is demonstrated in the power to bear children, or ideas (Venus). Thus the sphere of the conscious. We come now to the process whereby the conscious transcends or destroys itself.

Next Month—The Unconscious Mind

ATTENTION

April 10, 1934

Dear Readers:

The May 1934 issue of American Astrology will complete the first year that the Clancy Publications, Inc. with its editor, Paul G. Clancy, have endeavored to give its readers the finest type of service and advice on this wonderful science of Astrology.

It has been the Corporation's desire to give to its readers as much as possible for as little as possible and we trust that our endeavors have been accepted in the same spirit that we have attempted to give them. Therefore, we wish to thank our readers for the fine cooperation they have given us and trust that they will continue to derive much benefit from our magazine, American Astrology.

In conclusion, we are offering our readers to share in this anniversary by taking advantage of the special offer to all new and old subscribers received during the month of May. Full particulars concerning this appear on the reverse page.

Thanking you all very sincerely and wishing you every success, we are

Yours very truly,

CLANCY PUBLICATIONS, INC.,

1472 Broadway, New York City.

ANNIVERSARY COUPON

TWO Years' Subscription for the Price of ONE

To all new and old subscribers sending in their check or money order for \$3.00 together with this coupon, we will give TWO YEARS' subscription to American Astrology (24 issues), guaranteed to reach them by the 25th of the preceding month, in ample time for reference before the first of every month. This ONLY applies to all subscriptions received DIRECT at the CLANCY PUBLICATIONS, Inc., during the month of MAY 1934.

COUPON

Date.....1934

CLANCY PUBLICATIONS, INC.

1472 Broadway

New York, N. Y.

I am enclosing \$....., for which please send me AMERICAN
ASTROLOGY each month for TWO YEARS

Name

Address
(Street)

City

State

RATES

Two Years' Subscription (24 issues)

United States, \$3.00; Canada, \$3.25; Foreign, \$4.00

Kindly remit by money order or check.

Attention National Advertisers

▼
Can you tell us of any magazine
published today which is
Referred to—Every Day
in the Month

?

AMERICAN ASTROLOGY

Is Now Enjoying
An International Circulation

▼
FOR RATES

Write Direct or Through Your Advertising Agency

▼
CLANCY PUBLICATIONS, Inc.
1472 BROADWAY NEW YORK CITY, N. Y.
Telephone BRyant 9-7749

THE SECRET OF CHARM

is
Soft—Natural-looking Waves
as
produced by
SMART SET FINGER WEVERS



Wave Your



Own Hair

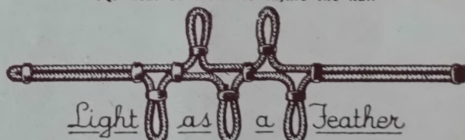
At Home

Your hair is easily destroyed, but hard to grow

SMART SET WEVERS

are flexible, soft and Self Locking.

No heat or metal to injure the hair



(for long or bobbed hair)

We want you to prove to yourself the value of this time and money saving device.
You owe it to yourself to mail the coupon below.

COUPON

P. L. SHELBY CO.,
49 East 21st St.,
New York City.

Please send me a set of Smart Set Finger Wevers (6) for which I enclose 60c.
Postage to be paid by you.

NAME
STREET
CITY